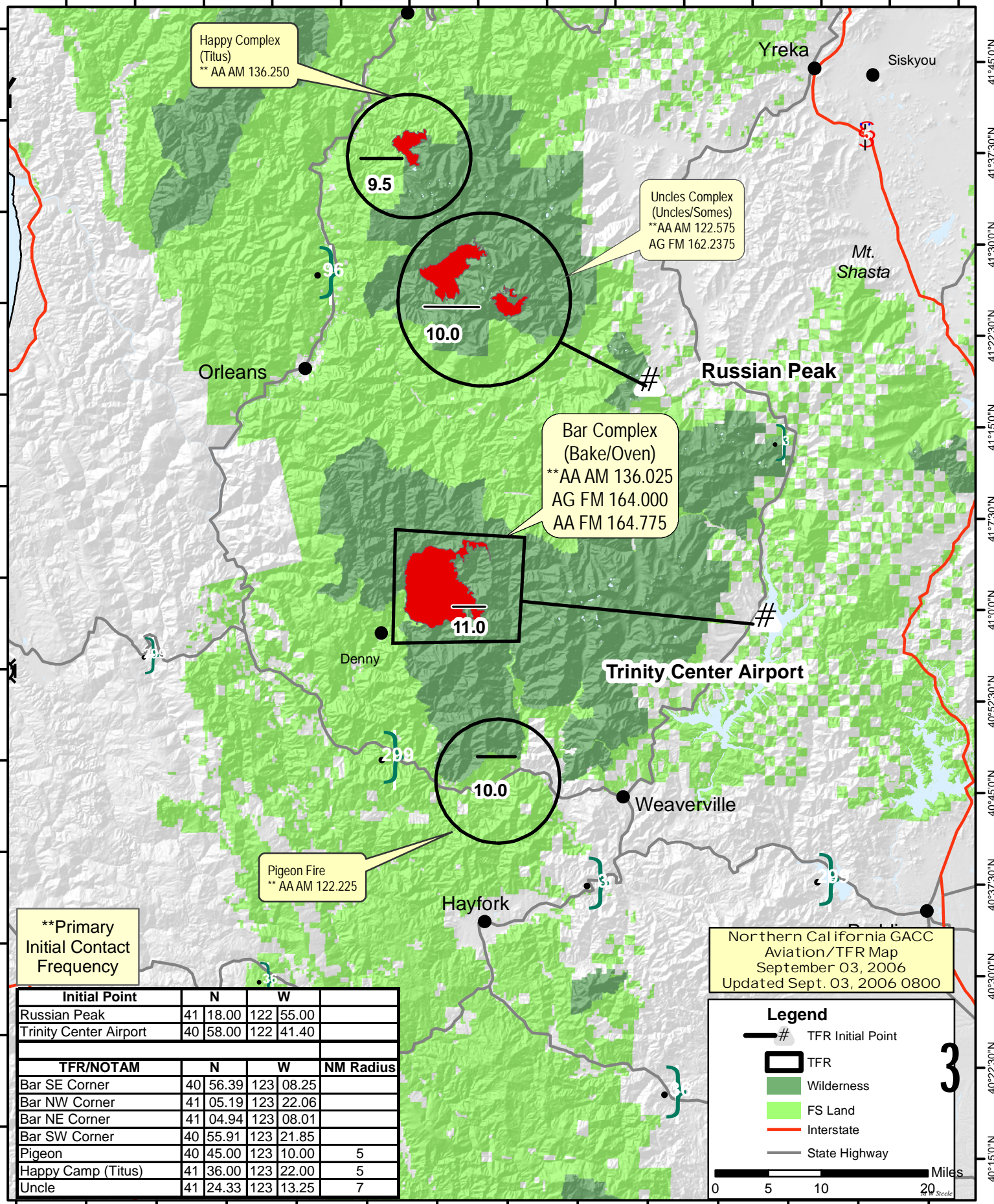


124°0'0"W 123°52'30"W 123°45'0"W 123°37'30"W 123°30'0"W 123°22'30"W 123°15'0"W 123°7'30"W 123°0'0"W 122°52'30"W 122°45'0"W 122°37'30"W 122°30'0"W 122°22'30"W



Happy Complex
(Titus)
** AA AM 136.250

Uncles Complex
(Uncles/Somes)
** AA AM 122.575
AG FM 162.2375

Bar Complex
(Bake/Oven)
** AA AM 136.025
AG FM 164.000
AA FM 164.775

Pigeon Fire
** AA AM 122.225

**Primary
Initial Contact
Frequency

Northern California GACC
Aviation/TFR Map
September 03, 2006
Updated Sept. 03, 2006 0800

Initial Point	N	W			
Russian Peak	41	18.00	122	55.00	
Trinity Center Airport	40	58.00	122	41.40	
TFR/NOTAM	N	W	NM Radius		
Bar SE Corner	40	56.39	123	08.25	
Bar NW Corner	41	05.19	123	22.06	
Bar NE Corner	41	04.94	123	08.01	
Bar SW Corner	40	55.91	123	21.85	
Pigeon	40	45.00	123	10.00	5
Happy Camp (Titus)	41	36.00	123	22.00	5
Uncle	41	24.33	123	13.25	7

Legend

- TFR Initial Point
- TFR
- Wilderness
- FS Land
- Interstate
- State Highway

0 5 10 20 Miles

3