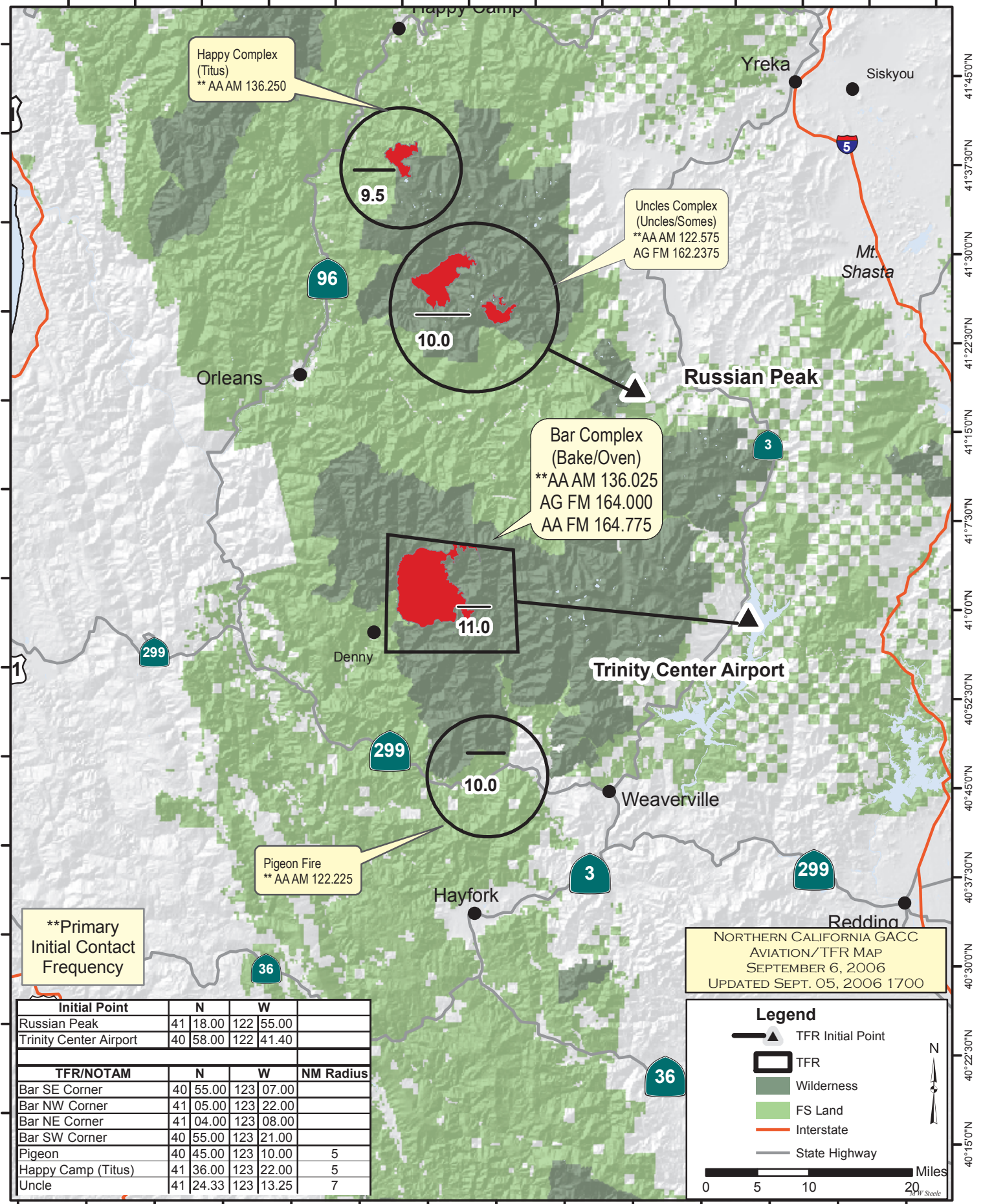


124°0'0"W 123°52'30"W 123°45'0"W 123°37'30"W 123°30'0"W 123°22'30"W 123°15'0"W 123°7'30"W 123°0'0"W 122°52'30"W 122°45'0"W 122°37'30"W 122°30'0"W 122°22'30"W



Happy Complex  
(Titus)  
\*\* AAAM 136.250

9.5

Uncles Complex  
(Uncles/Somes)  
\*\*AA AM 122.575  
AG FM 162.2375

10.0

Bar Complex  
(Bake/Oven)  
\*\*AA AM 136.025  
AG FM 164.000  
AA FM 164.775

11.0

Pigeon Fire  
\*\* AAAM 122.225

10.0

\*\*Primary  
Initial Contact  
Frequency

NORTHERN CALIFORNIA GACC  
AVIATION/TFR MAP  
SEPTEMBER 6, 2006  
UPDATED SEPT. 05, 2006 1700

Initial Point	N	W		
Russian Peak	41	18.00	122	55.00
Trinity Center Airport	40	58.00	122	41.40

TFR/NOTAM	N	W	NM Radius	
Bar SE Corner	40	55.00	123 07.00	
Bar NW Corner	41	05.00	123 22.00	
Bar NE Corner	41	04.00	123 08.00	
Bar SW Corner	40	55.00	123 21.00	
Pigeon	40	45.00	123 10.00	5
Happy Camp (Titus)	41	36.00	123 22.00	5
Uncle	41	24.33	123 13.25	7

**Legend**

- TFR Initial Point
- TFR
- Wilderness
- FS Land
- Interstate
- State Highway

0 5 10 20 Miles

22'30"N

41°45'0"N  
41°37'30"N  
41°30'0"N  
41°22'30"N  
41°15'0"N  
41°07'30"N  
41°00'0"N  
40°52'30"N  
40°45'0"N  
40°37'30"N  
40°30'0"N  
40°22'30"N  
40°15'0"N