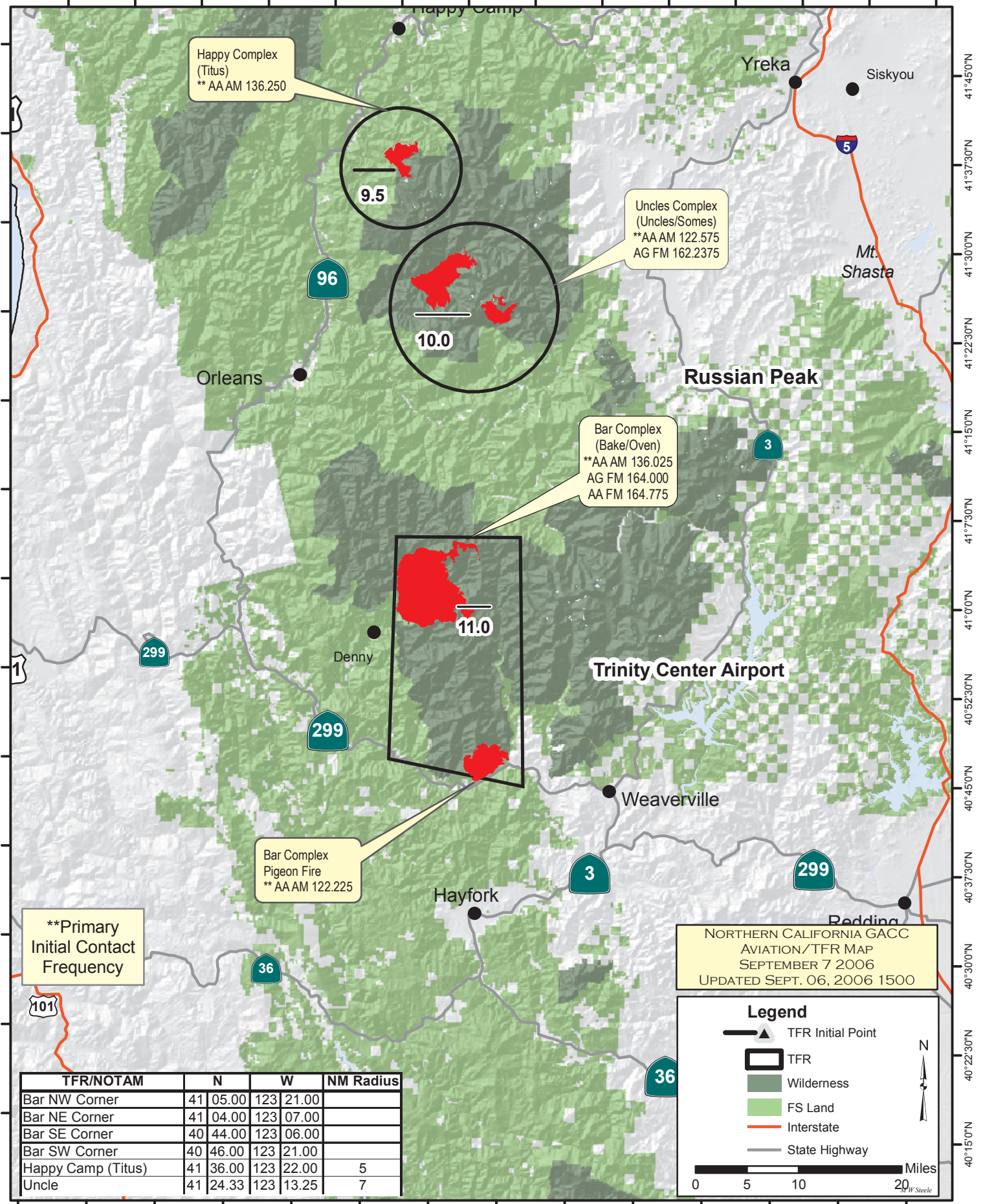


124°0'0"W 123°52'30"W 123°45'0"W 123°37'30"W 123°30'0"W 123°22'30"W 123°15'0"W 123°7'30"W 123°0'0"W 122°52'30"W 122°45'0"W 122°37'30"W 122°30'0"W 122°22'30"W



Happy Complex
(Titus)
** AAAM 136.250

9.5

Uncles Complex
(Uncles/Somes)
**AA AM 122.575
AG FM 162.2375

10.0

Bar Complex
(Bake/Oven)
**AA AM 136.025
AG FM 164.000
AA FM 164.775

11.0

Bar Complex
Pigeon Fire
** AAAM 122.225

**Primary
Initial Contact
Frequency

NORTHERN CALIFORNIA GACC
AVIATION/TFR MAP
SEPTEMBER 7 2006
UPDATED SEPT. 06, 2006 1500

Legend

- ▲ TFR Initial Point
- TFR
- Wilderness
- FS Land
- Interstate
- State Highway

0 5 10 20 Miles

N

W Steele

TFR/NOTAM	N	W	NM Radius
Bar NW Corner	41 05.00	123 21.00	
Bar NE Corner	41 04.00	123 07.00	
Bar SE Corner	40 44.00	123 06.00	
Bar SW Corner	40 46.00	123 21.00	
Happy Camp (Titus)	41 36.00	123 22.00	5
Uncle	41 24.33	123 13.25	7