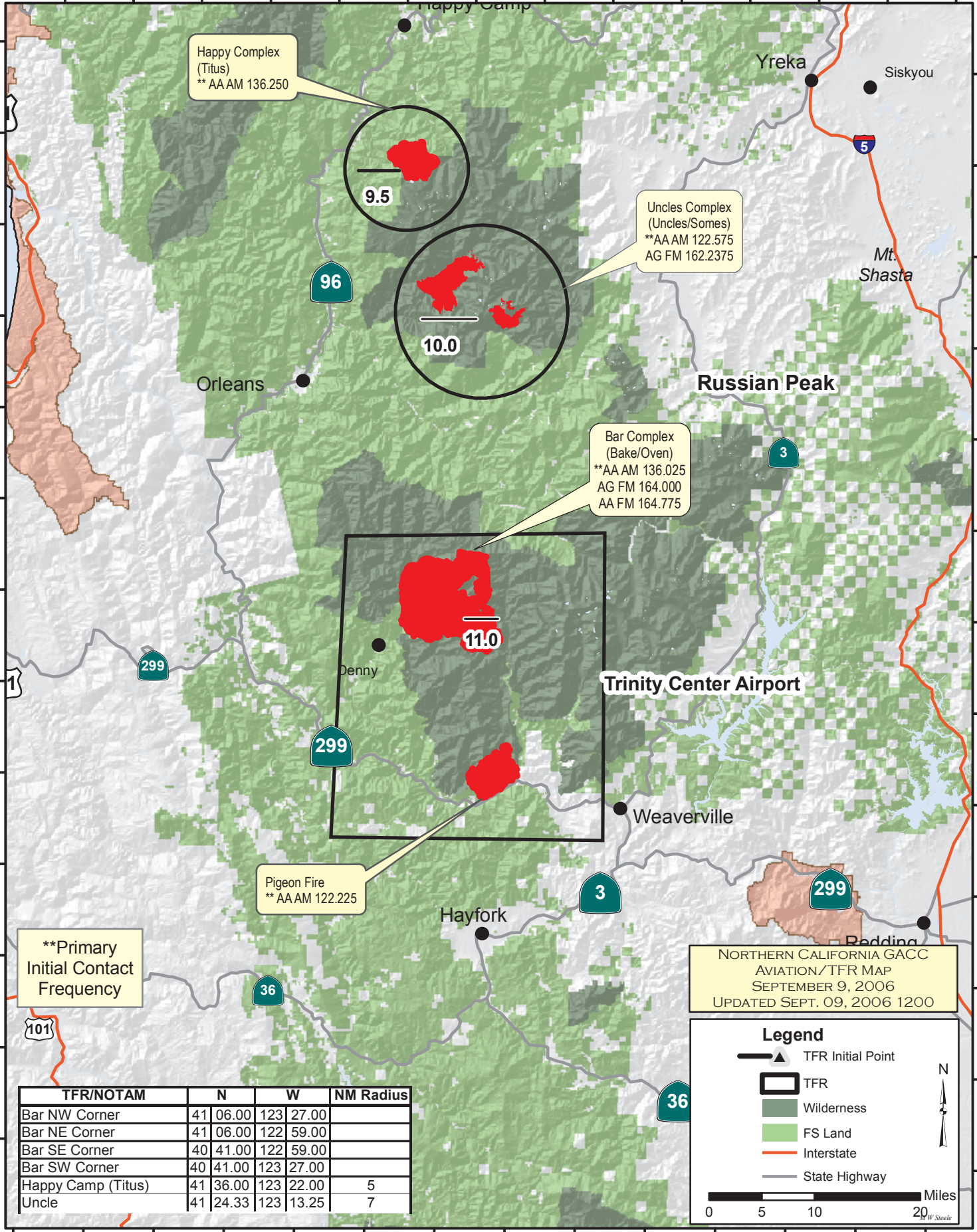


124°0'0"W 123°52'30"W 123°45'0"W 123°37'30"W 123°30'0"W 123°22'30"W 123°15'0"W 123°7'30"W 123°0'0"W 122°52'30"W 122°45'0"W 122°37'30"W 122°30'0"W 122°22'30"W

41°45'0"N
41°37'30"N
41°30'0"N
41°22'30"N
41°15'0"N
41°07'30"N
41°00'0"N
40°52'30"N
40°45'0"N
40°37'30"N
40°30'0"N
40°22'30"N
40°15'0"N



Happy Complex
(Titus)
** AAAM 136.250

9.5

Uncles Complex
(Uncles/Somes)
**AA AM 122.575
AG FM 162.2375

10.0

Bar Complex
(Bake/Oven)
**AA AM 136.025
AG FM 164.000
AA FM 164.775

11.0

Pigeon Fire
** AAAM 122.225

**Primary
Initial Contact
Frequency

NORTHERN CALIFORNIA GACC
AVIATION/TFR MAP
SEPTEMBER 9, 2006
UPDATED SEPT. 09, 2006 1200

Legend

- ▲ TFR Initial Point
- TFR
- Wilderness
- FS Land
- Interstate
- State Highway

0 5 10 20 Miles

N

TFR/NOTAM	N	W	NM Radius
Bar NW Corner	41 06.00	123 27.00	
Bar NE Corner	41 06.00	122 59.00	
Bar SE Corner	40 41.00	122 59.00	
Bar SW Corner	40 41.00	123 27.00	
Happy Camp (Titus)	41 36.00	123 22.00	5
Uncle	41 24.33	123 13.25	7