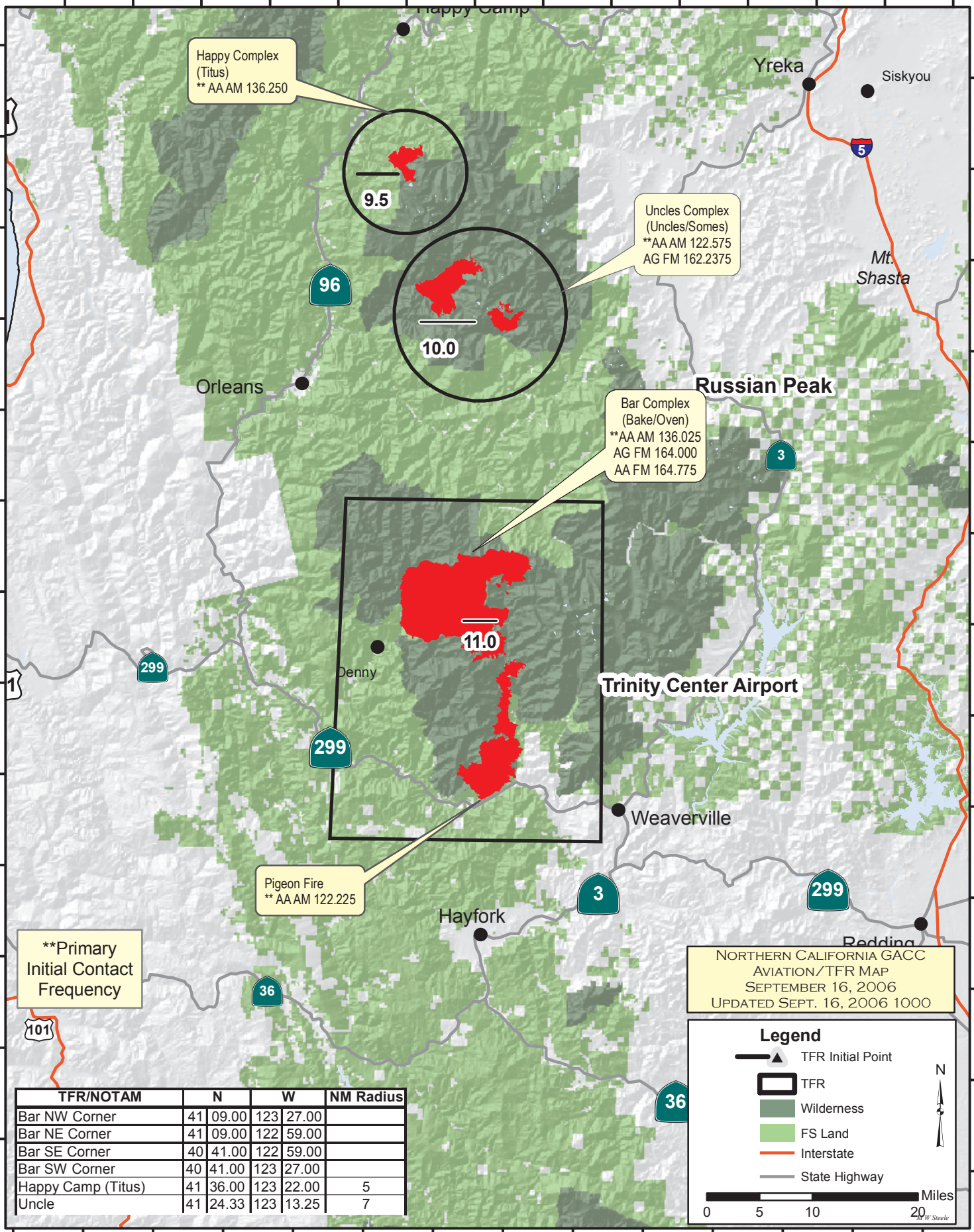


124°0'0"W 123°52'30"W 123°45'0"W 123°37'30"W 123°30'0"W 123°22'30"W 123°15'0"W 123°7'30"W 123°0'0"W 122°52'30"W 122°45'0"W 122°37'30"W 122°30'0"W 122°22'30"W

41°45'0"N  
41°37'30"N  
41°30'0"N  
41°22'30"N  
41°15'0"N  
41°07'30"N  
41°00'0"N  
40°52'30"N  
40°45'0"N  
40°37'30"N  
40°30'0"N  
40°22'30"N  
40°15'0"N



Happy Complex  
(Titus)  
\*\* AAAM 136.250

9.5

Uncles Complex  
(Uncles/Somes)  
\*\*AA AM 122.575  
AG FM 162.2375

10.0

Bar Complex  
(Bake/Oven)  
\*\*AA AM 136.025  
AG FM 164.000  
AA FM 164.775

11.0

Pigeon Fire  
\*\* AAAM 122.225

\*\*Primary  
Initial Contact  
Frequency

NORTHERN CALIFORNIA GACC  
AVIATION/TFR MAP  
SEPTEMBER 16, 2006  
UPDATED SEPT. 16, 2006 1000

**Legend**

- ▲ TFR Initial Point
- TFR
- Wilderness
- FS Land
- Interstate
- State Highway

0 5 10 20 Miles

TFR/NOTAM	N	W	NM Radius
Bar NW Corner	41 09.00	123 27.00	
Bar NE Corner	41 09.00	122 59.00	
Bar SE Corner	40 41.00	122 59.00	
Bar SW Corner	40 41.00	123 27.00	
Happy Camp (Titus)	41 36.00	123 22.00	5
Uncle	41 24.33	123 13.25	7