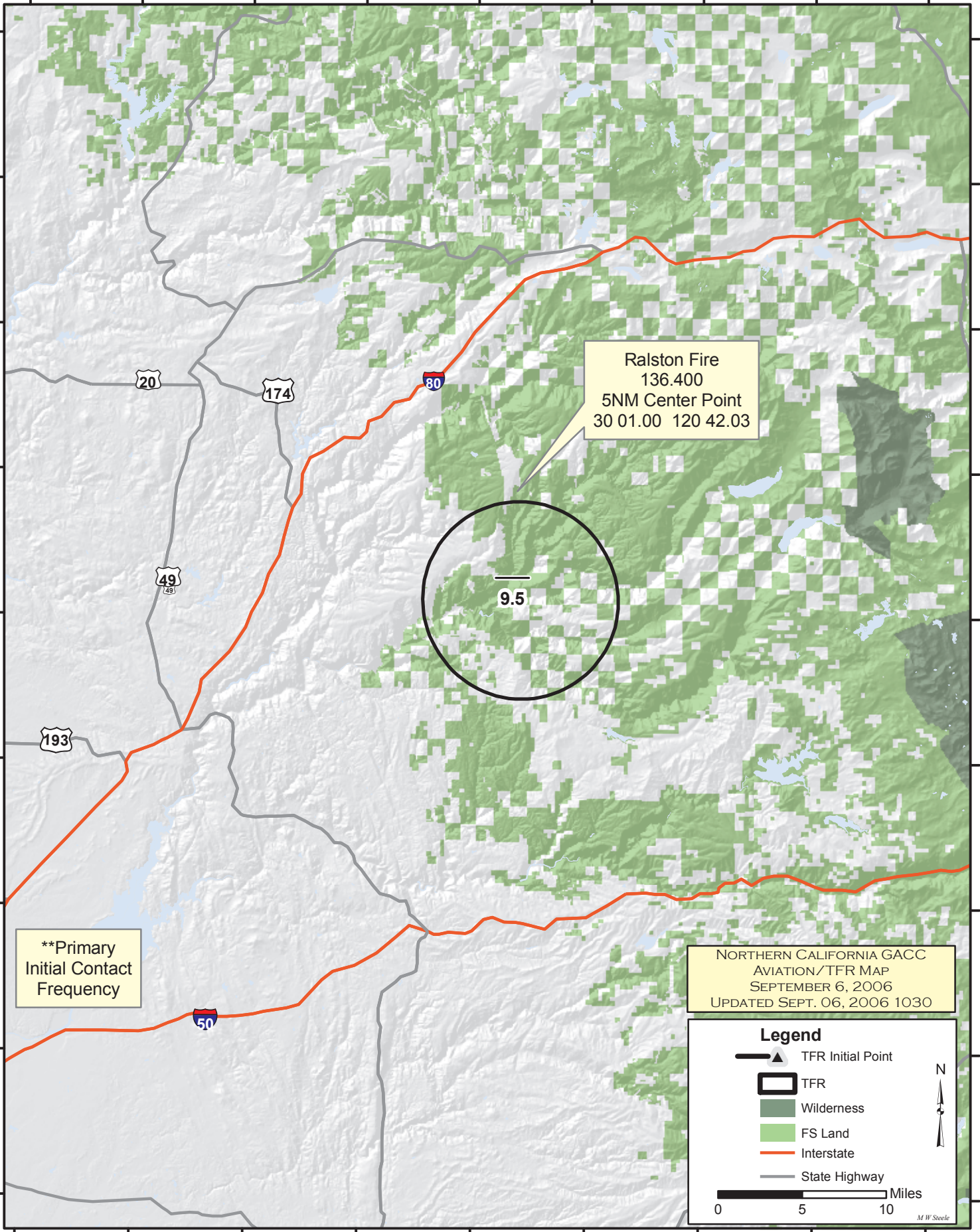
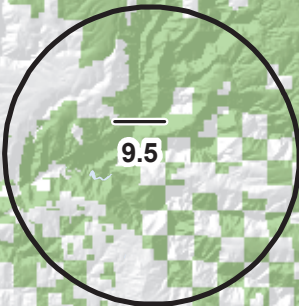


121°15'0"W 121°7'30"W 121°0'0"W 120°52'30"W 120°45'0"W 120°37'30"W 120°30'0"W 120°22'30"W 120°15'0"W

39°30'0"N
39°22'30"N
39°15'0"N
39°7'30"N
39°0'0"N
38°52'30"N
38°45'0"N
38°37'30"N
38°30'0"N



Ralston Fire
136.400
5NM Center Point
30 01.00 120 42.03



**Primary
Initial Contact
Frequency

NORTHERN CALIFORNIA GACC
AVIATION/TFR MAP
SEPTEMBER 6, 2006
UPDATED SEPT. 06, 2006 1030

Legend

- TFR Initial Point
- TFR
- Wilderness
- FS Land
- Interstate
- State Highway

Miles

0 5 10

M W Steele

