



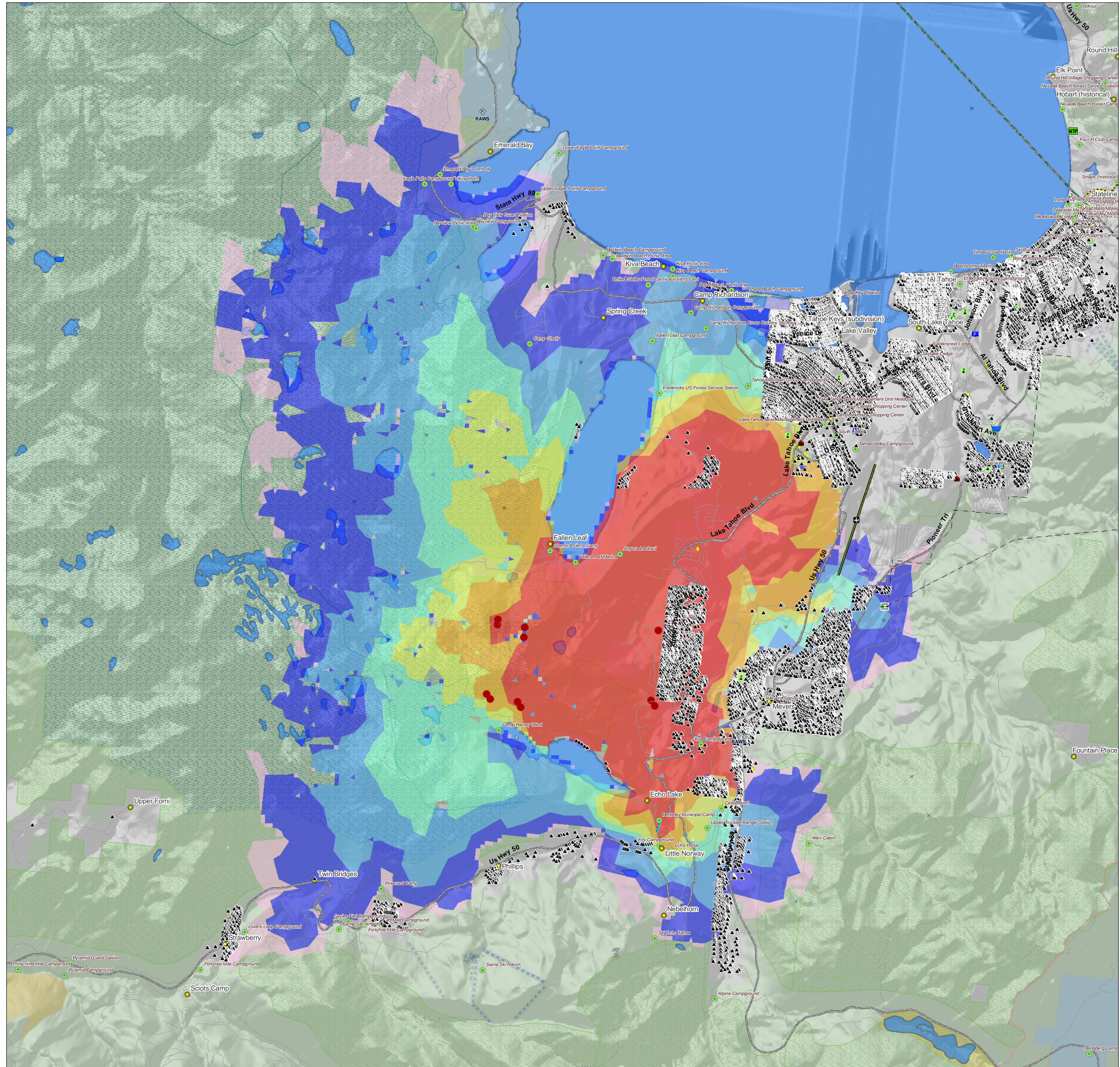
Angora, CA

25 June 2007 A2_070625-2 kh

Tier I: Major Values-at-Risk per FSPRO Fire Spread Probabilities: 14 days as of 24 June 2007

UPDATE: Includes Building Clusters

- ! MODIS Points 7 days: 24 June
- Past Fires 2000-2006
- FSPRO Fire Spread A2_070624**
- > 80 %
- 60 - 80 %
- 40 - 60 %
- 20 - 40 %
- 5 - 20 %
- 1 - 5 %
- < 1 %
- Z RAWs Stations
- # Building Clusters El Dorado Co.
- ⊕ Water: Dams > 100af
- ⊕ Water Supply: Intakes
- ⊕ Water Treatment Plants
- Water Pipeline - Aqueduct - Canal
- Powerlines
- ⊕ Power or Pumping Substation
- X Communication Towers
- Oil & Gas Transmission Lines
- ⊕ Airports
- Airport Runways
- Ski Resort Cables
- E Police Stations
- v Hospitals
- ⊕ Fire Stations
- n Schools
- ⊕ HAZMAT: Mines
- W HAZMAT: Superfund Sites
- W HAZMAT: Hazardous Waste
- ⊕ HAZMAT: Landfill
- ⊕ Other Landmarks
- Interstates
- Major Roads
- Local Roads (USFS)
- Trails (USFS)
- County Boundary
- Jurisdiction**
- Private
- State
- USFS
- Inventoried Roadless
- Designated Wilderness
- Experimental RNA
- Primitive RNA



*Building Clusters represent the center of parcels where county assessor records indicate taxable improvements are present. One or more structures and other improvements may exist proximate to these point locations.

CAUTION: Defer to air photos or local knowledge for exact structure and other feature locations.