

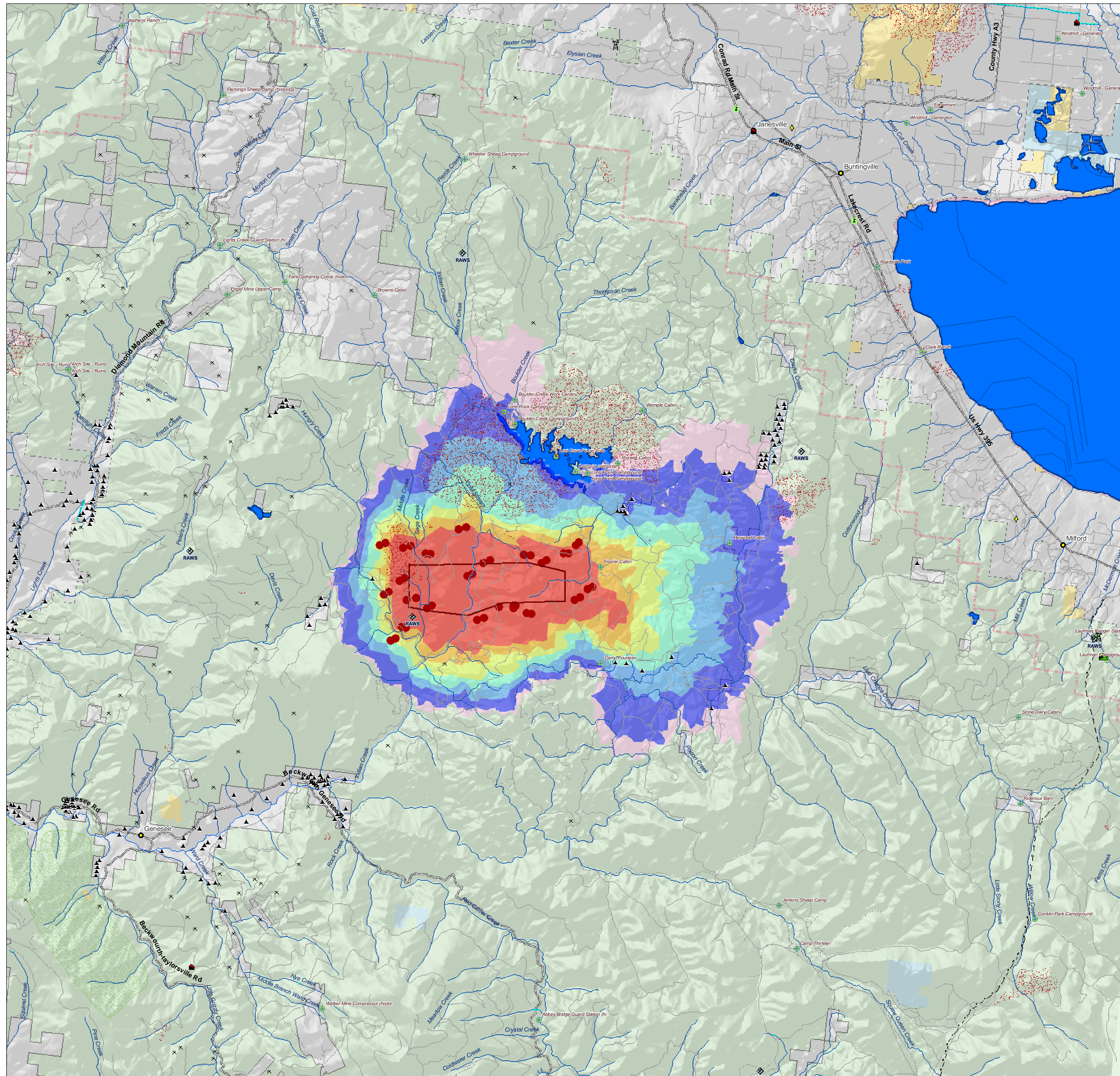


Antelope Complex, CA

6 July 2007 - A_T1_070706_1_CS

Major Values-at-Risk per
FSPRO Fire Spread Probabilities:
7 days as of 6 July 2007

- Fire Perimeter: 6 July 2007
- ! MODIS Points 7 days: 6 July
- Historic California Fires: 1994 - 2006
- FSPRO Fire Spread**
- > 80 %
- 60 - 80 %
- 40 - 60 %
- 20 - 40 %
- 5 - 20 %
- 1 - 5 %
- < 1 %
- # Building Clusters: Plumas County
- Z RAWs Stations
- D Water: Dams > 100af
- W Water Treatment Plants
- Water Pipeline - Aqueduct - Canal
- Powerlines
- X Communication Towers
- F Fire Stations
- S Schools
- M HAZMAT: Mines
- W HAZMAT: Hazardous Waste
- L Other Landmarks
- Interstates
- Major Roads
- Local Roads (USFS)
- Trails (USFS)
- County Boundary
- Jurisdiction**
- Private
- State
- BLM
- DOD
- USFS
- Inventoried Roadless
- Designated Wilderness



*Building Clusters represent the center of parcels where county assessor records indicate taxable improvements are present. One or more structures and other improvements may exist proximate to these point locations.

CAUTION: Defer to air photos or local knowledge for exact structure and other feature locations.