

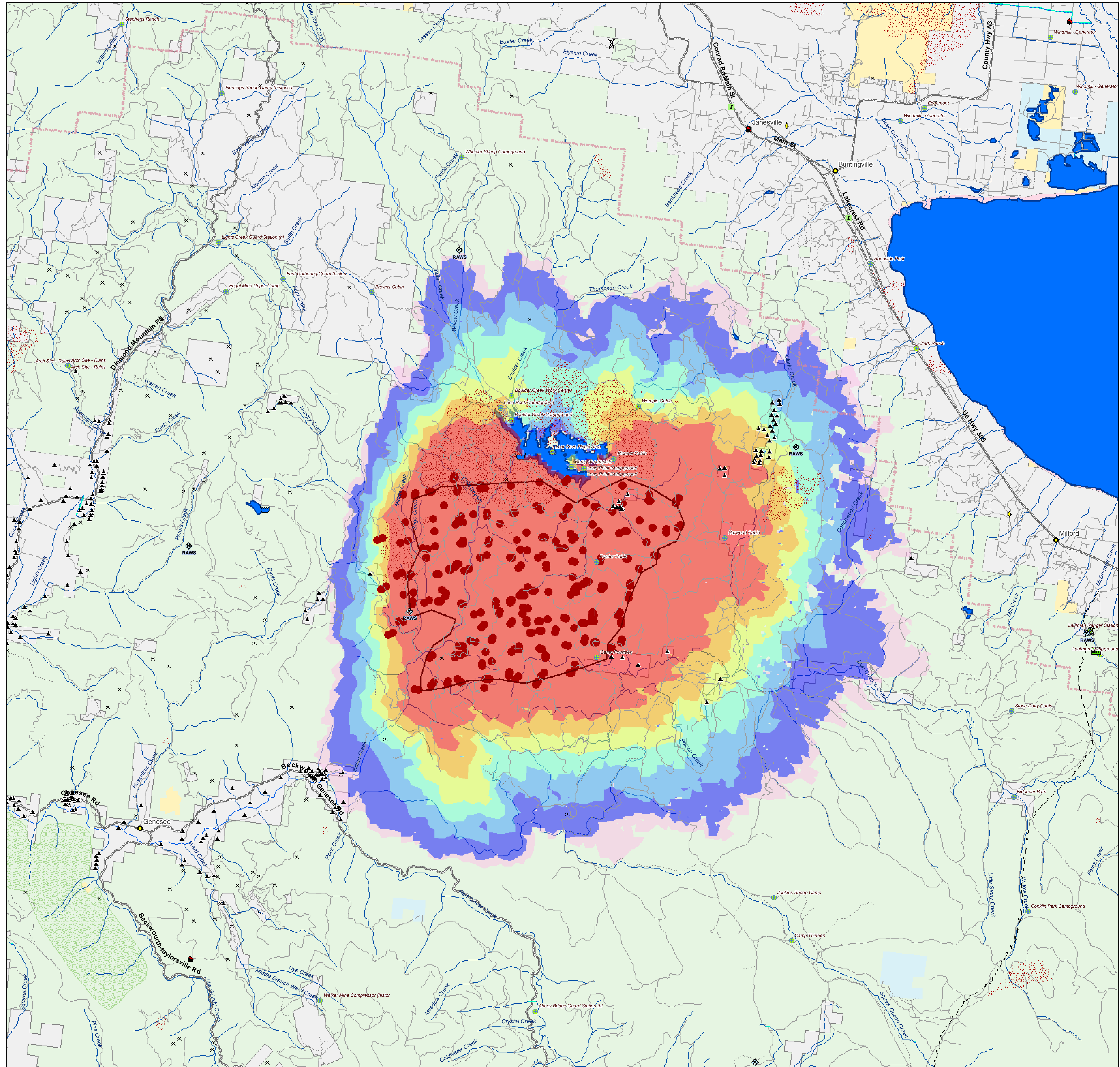


Antelope Complex, CA

7 July 2007 B_T1_070707-1

Major Values-at-Risk per FSPRO Fire Spread Probabilities: 7 days as of 7 July, 2007

- ! MODIS Points 7 days: 6/30 - 7/7
- ▭ Fire Perimeter: 7 July 2007
- FSPRO Fire Spread**
- > 80 %
- 60 - 80 %
- 40 - 60 %
- 20 - 40 %
- 5 - 20 %
- 1 - 5 %
- < 1 %
- # Building Clusters: Plumas County
- Z RAWs Stations
- ∩ Water: Dams > 100af
- ⊕ Water Treatment Plants
- Water Pipeline - Aqueduct - Canal
- Powerlines
- X Communication Towers
- ⊠ Fire Stations
- Ⓜ Schools
- ? HAZMAT: Mines
- W HAZMAT: Hazardous Waste
- ⊙ Other Landmarks
- Interstates
- Major Roads
- Local Roads (USFS)
- Trails (USFS)
- County Boundary
- ▨ Inventoried Roadless
- ▨ Designated Wilderness
- ▨ Historic California Fires: 1994 - 2006
- Jurisdiction**
- Private
- State
- BLM
- DOD
- USFS



*Building Clusters represent the center of parcels where county assessor records indicate taxable improvements are present. One or more structures and other improvements may exist proximate to these point locations.

CAUTION: Defer to air photos or local knowledge for exact structure and other feature locations.