



TIER 2 REGION 5

Antelope Complex Fire, CA 6 July 2007 Run A

Summary of Values-at-Risk per FSPRO Fire Spread Probabilities: 7 days as of 6 July 2007

Ranger Districts & Recent Fire Extents

- MODIS Points 7 days: 6/29 - 7/6
- Fire Perimeter (July 6)
- Past Fires 1994 - 2006

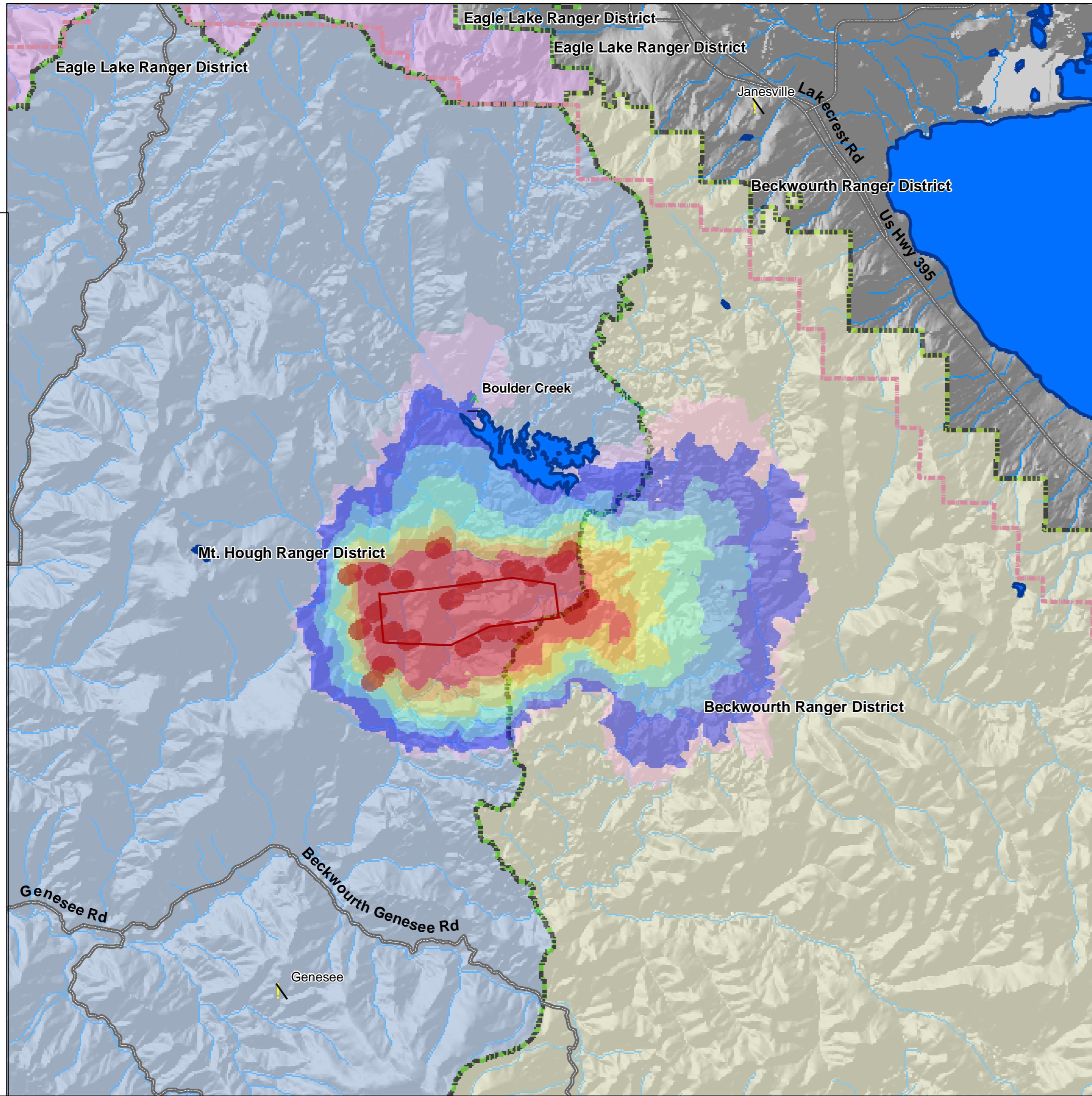
FSPRO Fire Spread Probability

- > 80 %
- 60 - 80 %
- 40 - 60 %
- 20 - 40 %
- 5 - 20 %
- 1 - 5 %
- < 1 %

- Communities at Risk
- Forest Service Facilities
- Major Roads
- Rivers & Streams
- County Boundary

Ranger Districts

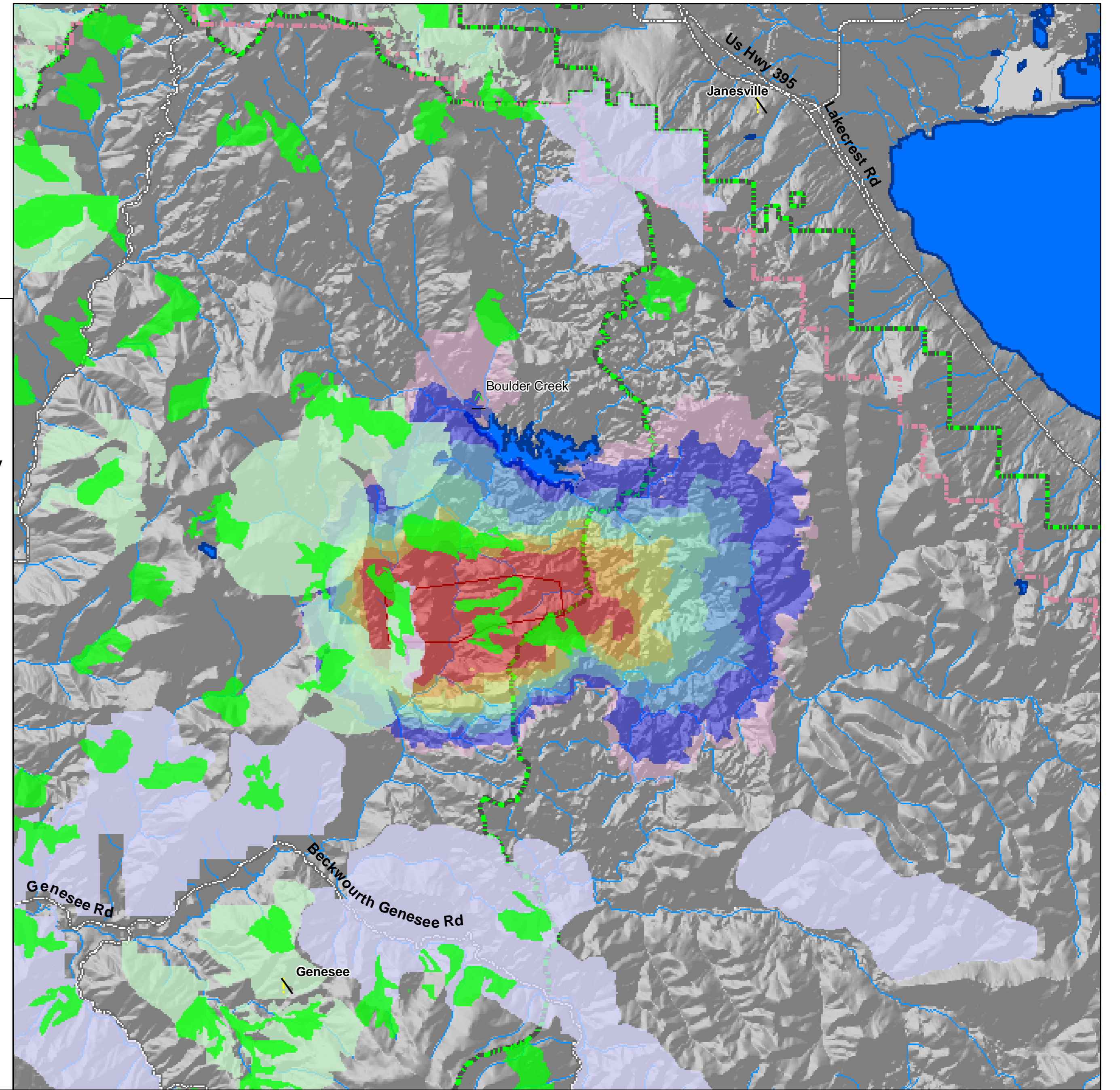
- Beckwourth Ranger District
- Eagle Lake Ranger District
- Mt. Hough Ranger District
- Water Bodies



Spotted Owl Distribution

- Fire Perimeter (July 6)
- FSPRO Fire Spread Probability
- > 80 %
- 60 - 80 %
- 40 - 60 %
- 20 - 40 %
- 5 - 20 %
- 1 - 5 %
- < 1 %

- Communities at Risk
- Forest Service Facilities
- Major Roads
- Rivers & Streams
- Ranger District Boundary
- County Boundary
- Spotted Owl Protected Activity Centers
- Spotted Owl Habitat
- QLG Offbase/Deferred Areas
- Water Bodies



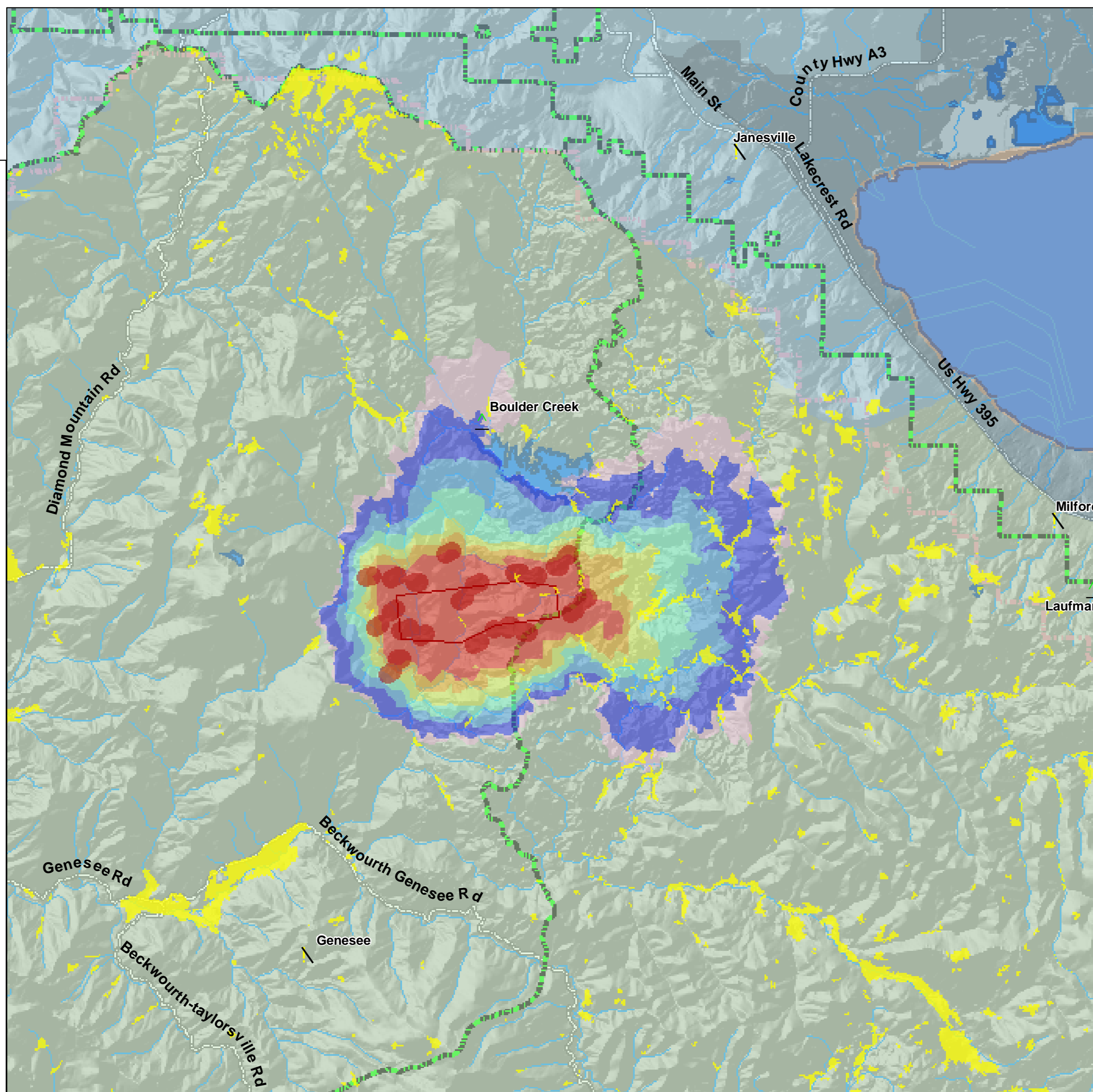
Direct Protection Areas & Willow Flycatcher Habitat

- MODIS Points 7 days: 6/29 - 7/6
- Fire Perimeter (July 6)
- FSPRO Fire Spread Probability
- > 80 %
- 60 - 80 %
- 40 - 60 %
- 20 - 40 %
- 5 - 20 %
- 1 - 5 %
- < 1 %

- Communities at Risk
- Forest Service Facilities
- Major Roads
- Rivers & Streams
- Willow_Flycatcher_Habitat
- Ranger District Boundary
- County Boundary

Direct Protection Areas

- CDF
- DOD
- LOCAL
- USF
- Water Bodies



Recreation Opportunity Spectrum Zones

- MODIS Points 7 days: 6/29 - 7/6
- Fire Perimeter (July 6)
- FSPRO Fire Spread Probability
- > 80 %
- 60 - 80 %
- 40 - 60 %
- 20 - 40 %
- 5 - 20 %
- 1 - 5 %
- < 1 %

- Communities at Risk
- Forest Service Facilities
- Major Roads
- Rivers & Streams
- Ranger District Boundary
- County Boundary

Recreation Opportunity Spectrum Zones

- Natural/Roaded
- Rural
- Semi-Primitive/Non-motorized
- Water Bodies

