

ANTELOPE COMPLEX - Plumas National Forest Infrared Briefing Map - IR heat data as of 21:42 hrs, July 9, 2007

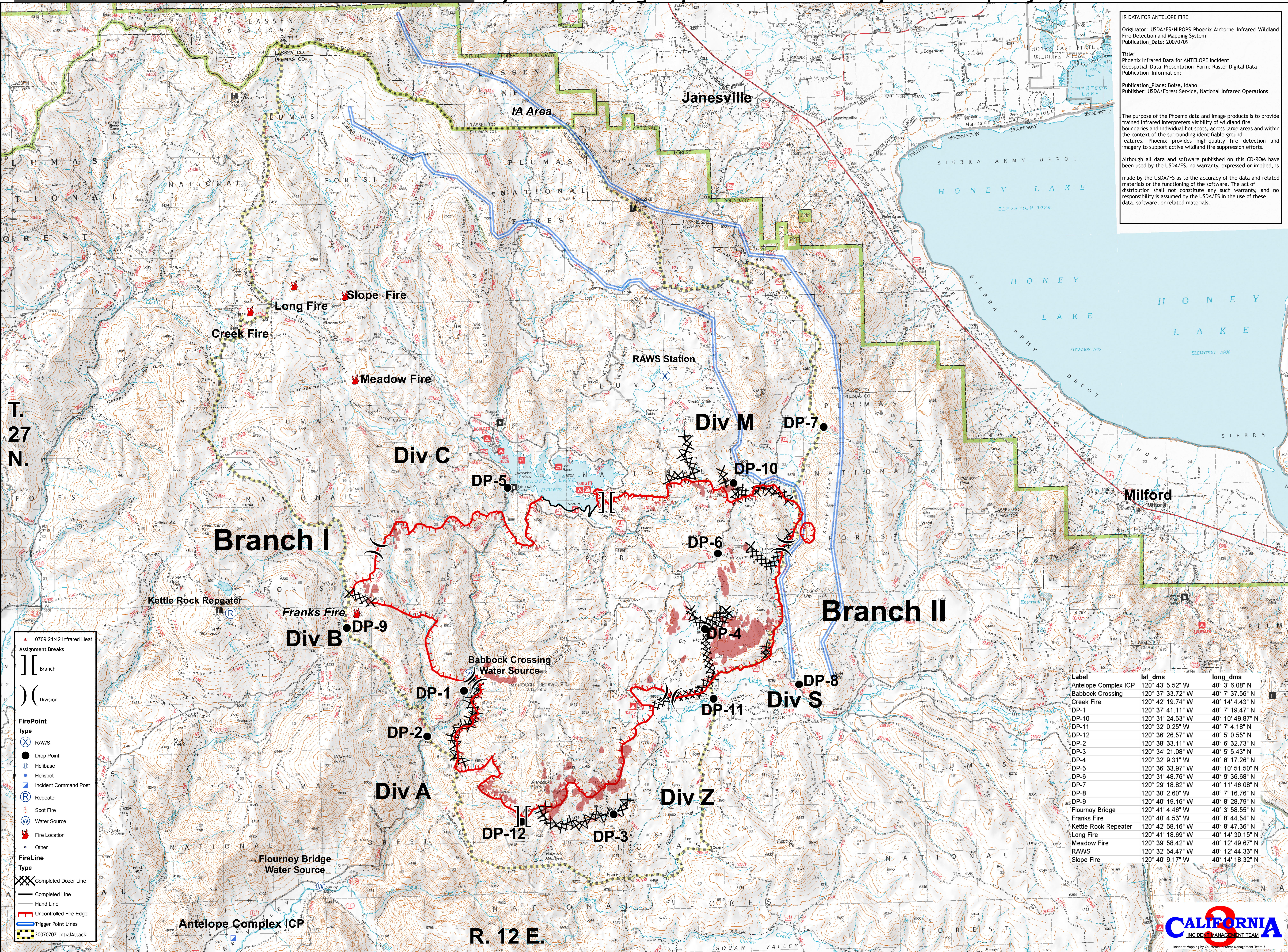
IR DATA FOR ANTELOPE FIRE
 Originator: USDA/FS/NROPS Phoenix Airborne Infrared Wildland Fire Detection and Mapping System
 Publication Date: 20070709

Title:
 Phoenix Infrared Data for ANTELOPE Incident
 Geospatial_Data_Presentation_Form: Raster Digital Data
 Publication_Information:

Publication Place: Boise, Idaho
 Publisher: USDA/Forest Service, National Infrared Operations

The purpose of the Phoenix data and image products is to provide trained Infrared Interpreters visibility of wildland fire boundaries and individual hot spots, across large areas and within the context of the surrounding identifiable ground features. Phoenix provides high-quality fire detection and imagery to support active wildland fire suppression efforts.

Although all data and software published on this CD-ROM have been used by the USDA/FS, no warranty, expressed or implied, is made by the USDA/FS as to the accuracy of the data and related materials or the functioning of the software. The act of distribution shall not constitute any such warranty, and no responsibility is assumed by the USDA/FS in the use of these data, software, or related materials.



0709 21:42 Infrared Heat

Assignment Breaks

- Branch
- Division

FirePoint

Type

- RAWs
- Drop Point
- Helibase
- Helispot
- Incident Command Post
- Repeater
- Spot Fire
- Water Source
- Fire Location
- Other

FireLine

Type

- Completed Dozer Line
- Completed Line
- Hand Line
- Uncontrolled Fire Edge
- Trigger Point Lines
- 20070707_InitialAttack

Label	lat_dms	long_dms
Antelope Complex ICP	120° 43' 5.52" W	40° 3' 6.08" N
Babcock Crossing	120° 37' 33.72" W	40° 7' 37.56" N
Creek Fire	120° 42' 19.74" W	40° 14' 4.43" N
DP-1	120° 37' 41.11" W	40° 7' 19.47" N
DP-10	120° 31' 24.53" W	40° 10' 49.87" N
DP-11	120° 32' 0.25" W	40° 7' 4.18" N
DP-12	120° 36' 26.57" W	40° 5' 0.55" N
DP-2	120° 38' 33.11" W	40° 6' 32.73" N
DP-3	120° 34' 21.08" W	40° 5' 5.43" N
DP-4	120° 32' 9.31" W	40° 8' 17.26" N
DP-5	120° 36' 33.97" W	40° 10' 51.50" N
DP-6	120° 31' 48.76" W	40° 9' 36.68" N
DP-7	120° 29' 18.82" W	40° 11' 46.08" N
DP-8	120° 30' 2.60" W	40° 7' 16.76" N
DP-9	120° 40' 19.16" W	40° 8' 28.79" N
Flournoy Bridge	120° 41' 4.46" W	40° 3' 58.55" N
Franks Fire	120° 40' 4.53" W	40° 8' 44.54" N
Kettle Rock Repeater	120° 42' 58.16" W	40° 8' 47.36" N
Long Fire	120° 41' 18.69" W	40° 14' 30.15" N
Meadow Fire	120° 39' 58.42" W	40° 12' 49.67" N
RAWs	120° 32' 54.47" W	40° 12' 44.33" N
Slope Fire	120° 40' 9.17" W	40° 14' 18.32" N