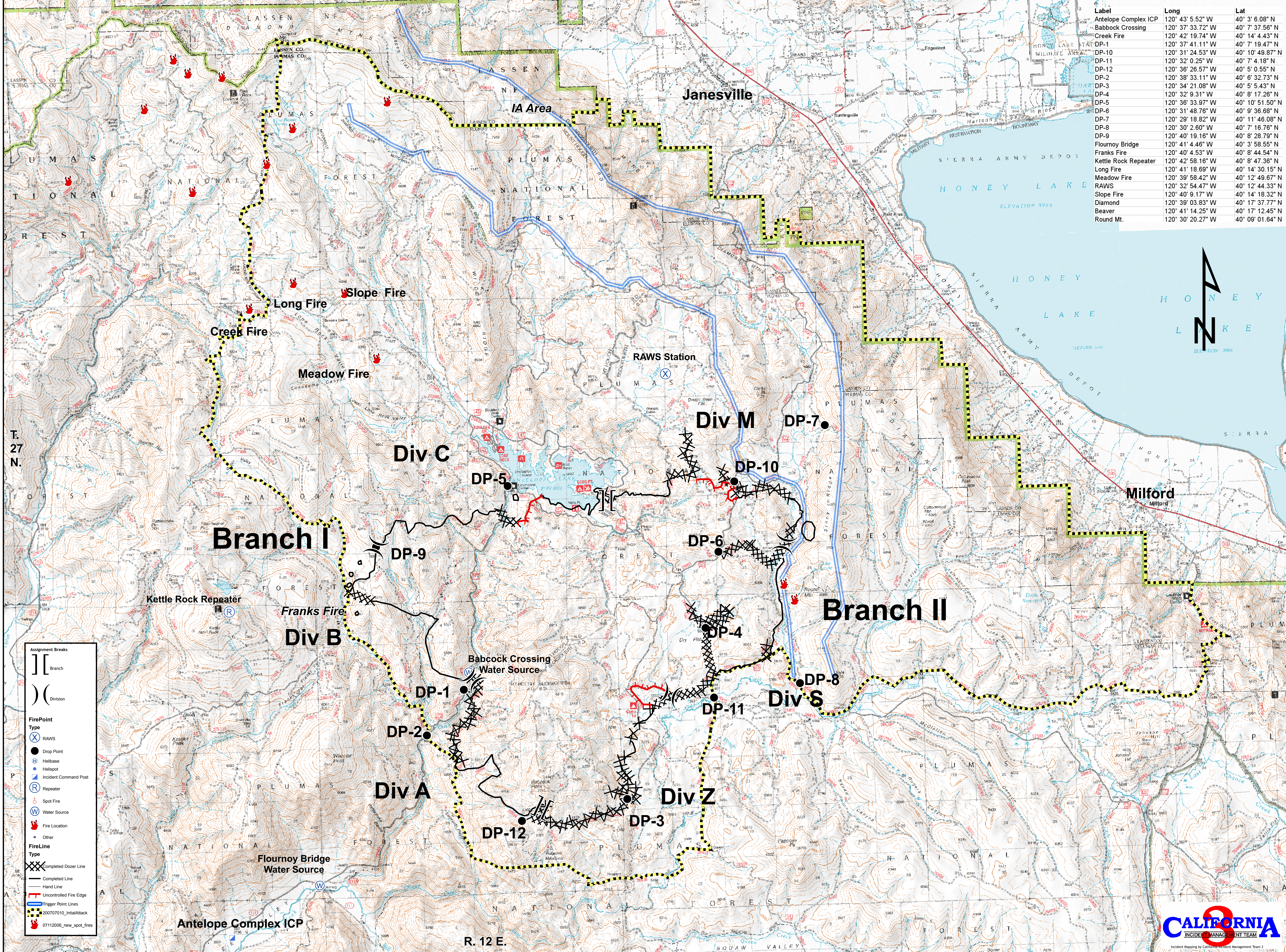


ANTELOPE COMPLEX - Plumas National Forest Briefing Map

22,882 Acres 1900 July 11th



Label	Long	Lat
Antelope Complex ICP	120° 43' 5.52" W	40° 3' 6.08" N
Babcock Crossing	120° 37' 33.72" W	40° 7' 37.56" N
Creek Fire	120° 42' 19.74" W	40° 14' 4.43" N
DP-1	120° 37' 41.11" W	40° 7' 19.47" N
DP-10	120° 31' 24.53" W	40° 10' 49.87" N
DP-11	120° 32' 0.25" W	40° 7' 4.18" N
DP-12	120° 36' 26.57" W	40° 5' 0.55" N
DP-2	120° 38' 33.11" W	40° 6' 32.73" N
DP-3	120° 34' 21.08" W	40° 5' 5.43" N
DP-4	120° 32' 9.31" W	40° 8' 17.26" N
DP-5	120° 36' 33.97" W	40° 10' 51.50" N
DP-6	120° 31' 48.76" W	40° 9' 36.68" N
DP-7	120° 29' 18.82" W	40° 11' 46.08" N
DP-8	120° 30' 2.60" W	40° 7' 16.76" N
DP-9	120° 40' 19.16" W	40° 8' 28.79" N
Flournoy Bridge	120° 41' 4.46" W	40° 3' 58.55" N
Franks Fire	120° 40' 4.53" W	40° 8' 44.54" N
Kettle Rock Repeater	120° 42' 58.16" W	40° 8' 47.36" N
Long Fire	120° 41' 18.69" W	40° 14' 30.15" N
Meadow Fire	120° 39' 58.42" W	40° 12' 49.67" N
RAWS	120° 32' 54.47" W	40° 12' 44.33" N
Slope Fire	120° 40' 9.17" W	40° 14' 18.32" N
Diamond	120° 39' 03.83" W	40° 17' 37.77" N
Beaver	120° 41' 14.25" W	40° 17' 12.45" N
Round Mt.	120° 30' 20.27" W	40° 09' 01.64" N

Assignment Breaks

- Branch
- Division

FirePoint Type

- RAWS
- Drop Point
- Helibase
- Helispot
- Incident Command Post
- Repeater
- Spot Fire
- Water Source

Fire Location

- Fire Location
- Other

FireLine Type

- Completed Dozer Line
- Completed Line
- Hand Line
- Uncontrolled Fire Edge
- Trigger Point Lines
- 200707010_InitialAttack
- 0712006_new_spot_fires

