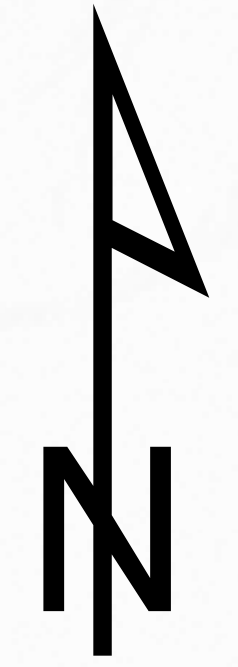
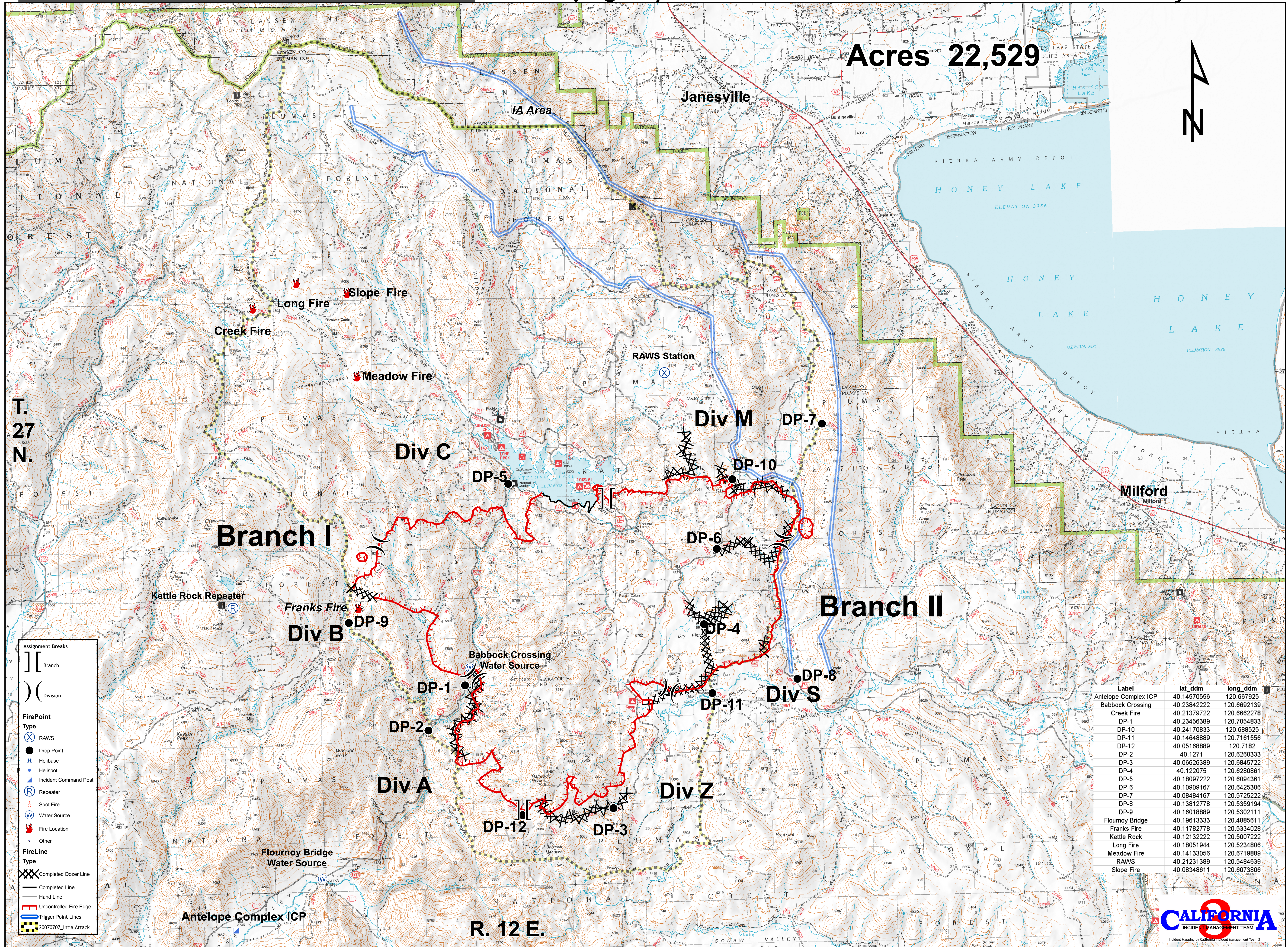


Acres 22,529



T. 27 N.

R. 12 E.



Assignment Breaks

- [[Branch
-)) Division

FirePoint

- ⊗ RAWs
- Drop Point
- Ⓜ Helibase
- Ⓢ Helispot
- Ⓡ Incident Command Post
- Ⓡ Repeater
- Ⓢ Spot Fire
- Ⓜ Water Source
- 🔥 Fire Location
- Other

FireLine

- ⓧ Completed Dozer Line
- Completed Line
- Hand Line
- 🔥 Uncontrolled Fire Edge
- Trigger Point Lines
- 🔥 20070707_IntialAttack

| Label | lat_ddm | long_ddm |
|----------------------|-------------|-------------|
| Antelope Complex ICP | 40.14570556 | 120.667925 |
| Babcock Crossing | 40.23842222 | 120.6692139 |
| Creek Fire | 40.21379722 | 120.6662278 |
| DP-1 | 40.23456389 | 120.7054833 |
| DP-10 | 40.24170833 | 120.688525 |
| DP-11 | 40.14648889 | 120.7161556 |
| DP-12 | 40.05168889 | 120.7182 |
| DP-2 | 40.1271 | 120.6260333 |
| DP-3 | 40.06626389 | 120.6845722 |
| DP-4 | 40.122075 | 120.6280861 |
| DP-5 | 40.18097222 | 120.6094361 |
| DP-6 | 40.10909167 | 120.6425306 |
| DP-7 | 40.08484167 | 120.5725222 |
| DP-8 | 40.13812778 | 120.5359194 |
| DP-9 | 40.16018889 | 120.5302111 |
| Flournoy Bridge | 40.19613333 | 120.4885611 |
| Franks Fire | 40.11782778 | 120.5334028 |
| Kettle Rock | 40.12132222 | 120.5007222 |
| Long Fire | 40.18051944 | 120.5234806 |
| Meadow Fire | 40.14133056 | 120.6719889 |
| RAWs | 40.21231389 | 120.5484639 |
| Slope Fire | 40.08348611 | 120.6073806 |

