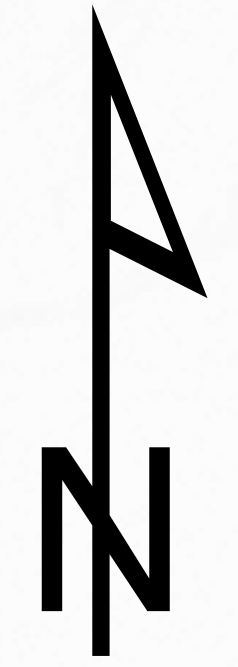
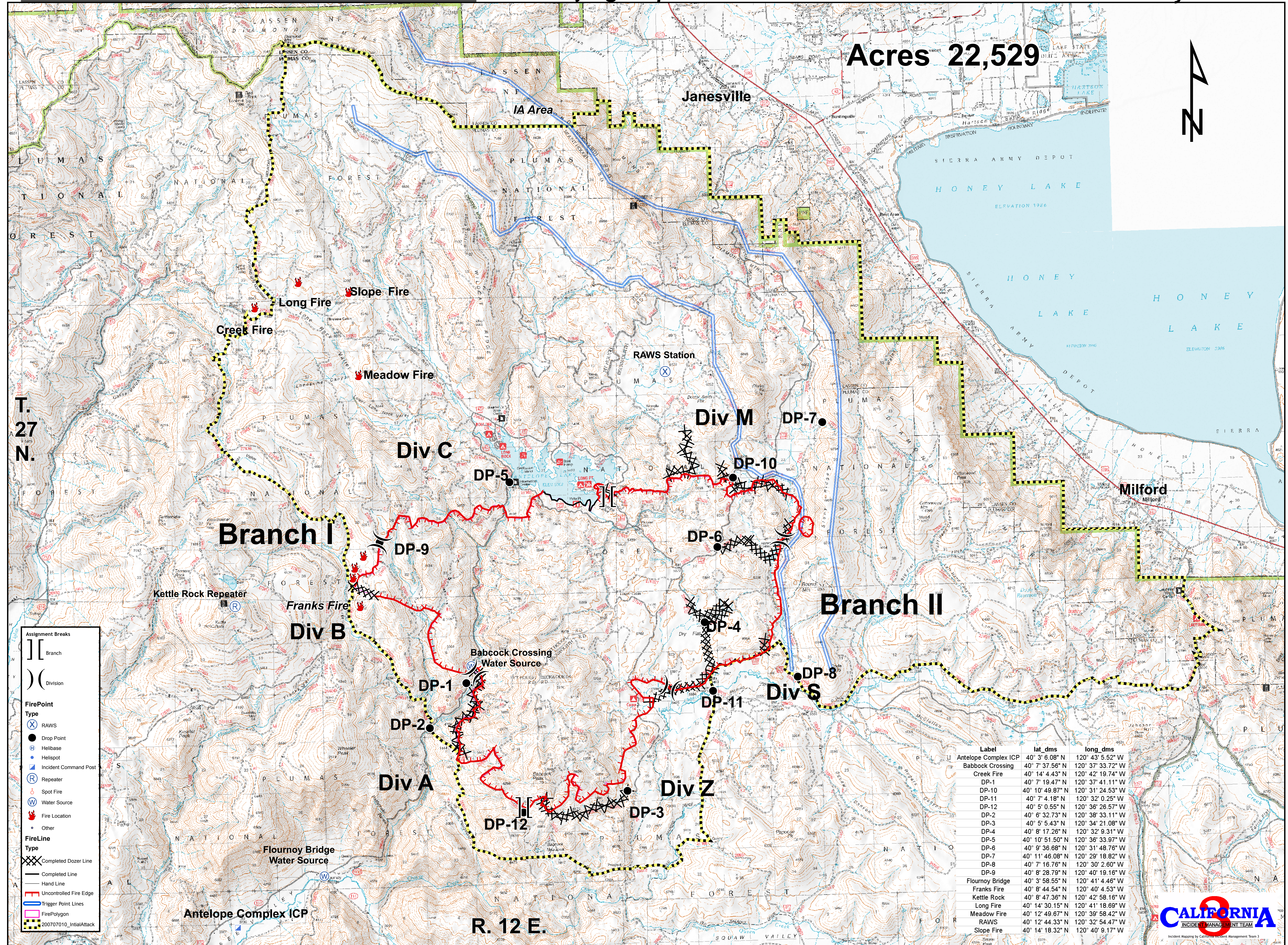


Acres 22,529



T. 27 N.

R. 12 E.



- Assignment Breaks**
- [[Branch
 -) Division
- FirePoint Type**
- ⊗ RAWS
 - Drop Point
 - ⊕ Helibase
 - ⊙ Helispot
 - ⊠ Incident Command Post
 - Ⓡ Repeater
 - ⊙ Spot Fire
 - Ⓜ Water Source
 - 🔥 Fire Location
 - Other
- FireLine Type**
- ⊗ Completed Dozer Line
 - Completed Line
 - Hand Line
 - Uncontrolled Fire Edge
 - Trigger Point Lines
 - ▭ Fire Polygon
 - ⊠ 20070710_InitialAttack

Label	lat_dms	long_dms
Antelope Complex ICP	40° 3' 6.08" N	120° 43' 5.52" W
Babcock Crossing	40° 7' 37.56" N	120° 37' 33.72" W
Creek Crossing	40° 14' 4.43" N	120° 42' 19.74" W
DP-1	40° 7' 19.47" N	120° 37' 41.11" W
DP-10	40° 10' 49.87" N	120° 31' 24.53" W
DP-11	40° 7' 4.18" N	120° 32' 0.25" W
DP-12	40° 5' 0.55" N	120° 36' 26.57" W
DP-2	40° 6' 32.73" N	120° 38' 33.11" W
DP-3	40° 5' 5.43" N	120° 34' 21.08" W
DP-4	40° 8' 17.26" N	120° 32' 9.31" W
DP-5	40° 10' 51.50" N	120° 36' 33.97" W
DP-6	40° 9' 36.88" N	120° 31' 48.76" W
DP-7	40° 11' 46.08" N	120° 29' 18.82" W
DP-8	40° 7' 16.76" N	120° 30' 2.60" W
DP-9	40° 8' 28.79" N	120° 40' 19.16" W
Flournoy Bridge	40° 3' 58.55" N	120° 41' 4.46" W
Franks Fire	40° 8' 44.54" N	120° 40' 4.53" W
Kettle Rock	40° 8' 47.36" N	120° 42' 58.16" W
Long Fire	40° 14' 30.15" N	120° 41' 18.69" W
Meadow Fire	40° 12' 49.67" N	120° 39' 58.42" W
RAWS	40° 12' 44.33" N	120° 32' 54.47" W
Slope Fire	40° 14' 18.32" N	120° 40' 9.17" W

