

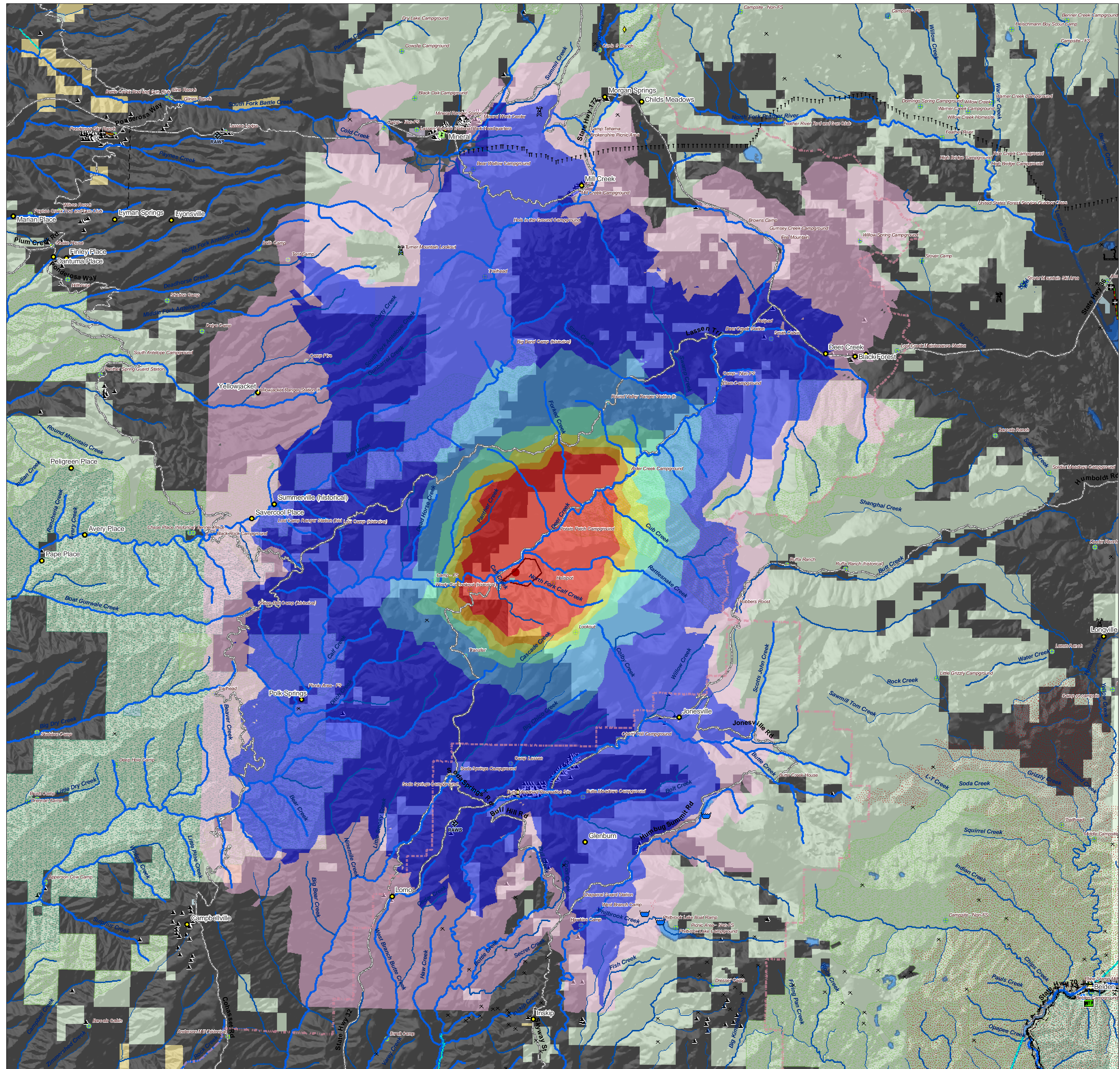


Colby, CA

Colby_CA_T1_A_070811_1_eb

Major Values-at-Risk per FSPRO Fire Spread Probabilities: 10 days as of 11 August, 2007

- Fire Perimeter: 10 August 2200h
- MODIS Points**
- | 11 August
- | 10 August
- | 6 days prior
- Past Fires 2000-2006
- FSPRO Fire Spread Probability**
- > 80 %
- 60 - 80 %
- 40 - 60 %
- 20 - 40%
- 5 - 20 %
- 1 - 5 %
- < 1 %
- Z** RAWS Stations
- #** Building Clusters
- ~ Water: Dams > 100af
- ~ Water Supply: Intakes
- ~ Water Treatment Plants
- ~ Water Pipeline - Aqueduct - Canal
- ~ Powerlines
- D** Industrial Plant
- *** Power Pylon
- ~ Power or Pumping Substation
- X** Communication Towers
- ~ Airports
- ~ Airport Runways
- h** Schools
- ~ HAZMAT: Mines
- ~ HAZMAT: Hazardous Waste
- ~ Other Landmarks
- ~ Interstates
- ~ Major Roads
- ~ Railways
- ~ County Boundary
- Jurisdiction**
- Private
- State
- BLM
- NPS
- USFS
- Inventoried Roadless
- Designated Wilderness
- Experimental RNA



*Building Clusters represent the center of parcels where county assessor records indicate taxable improvements are present. One or more structures and other improvements may exist proximate to these point locations.

CAUTION: Defer to air photos or local knowledge for exact structure and other feature locations.