

Spotted Owl Habitat & Quincy Library Group

MODIS Points: 11 Aug 1000h

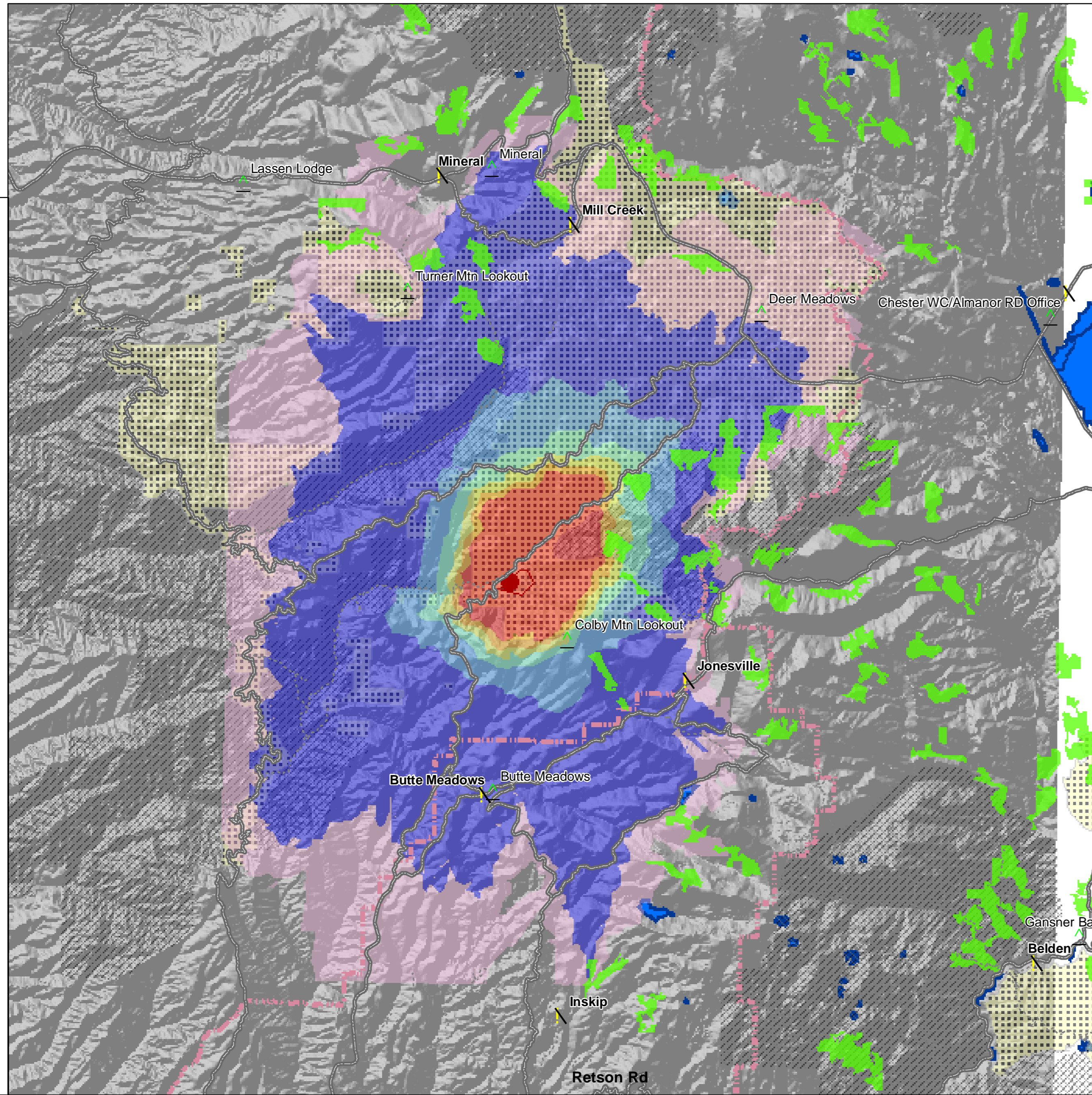
- 11 August
- 10 August
- Prior 6 days

Fire Perimeter 11 Aug 0000h

FSPRO Fire Spread Probability

- > 80 %
- 60 - 80 %
- 40 - 60 %
- 20 - 40 %
- 5 - 20 %
- 1 - 5 %
- < 1 %

\ Communities at Risk
 △ Forest Service Facilities
 — Major Roads
 - - - Trails (USFS)
 - - - County Boundary
 ■ Spotted Owl Protected Activity Centers
 ▨ QLG Deferred Areas
 ▩ QLG Off-base Areas
 ■ Water Bodies



Ranger Districts, Recent Fire Extents, & Chinook Critical Habitat/Distribution

MODIS Points: 11 Aug 1000h

- 11 August
- 10 August
- Prior 6 days

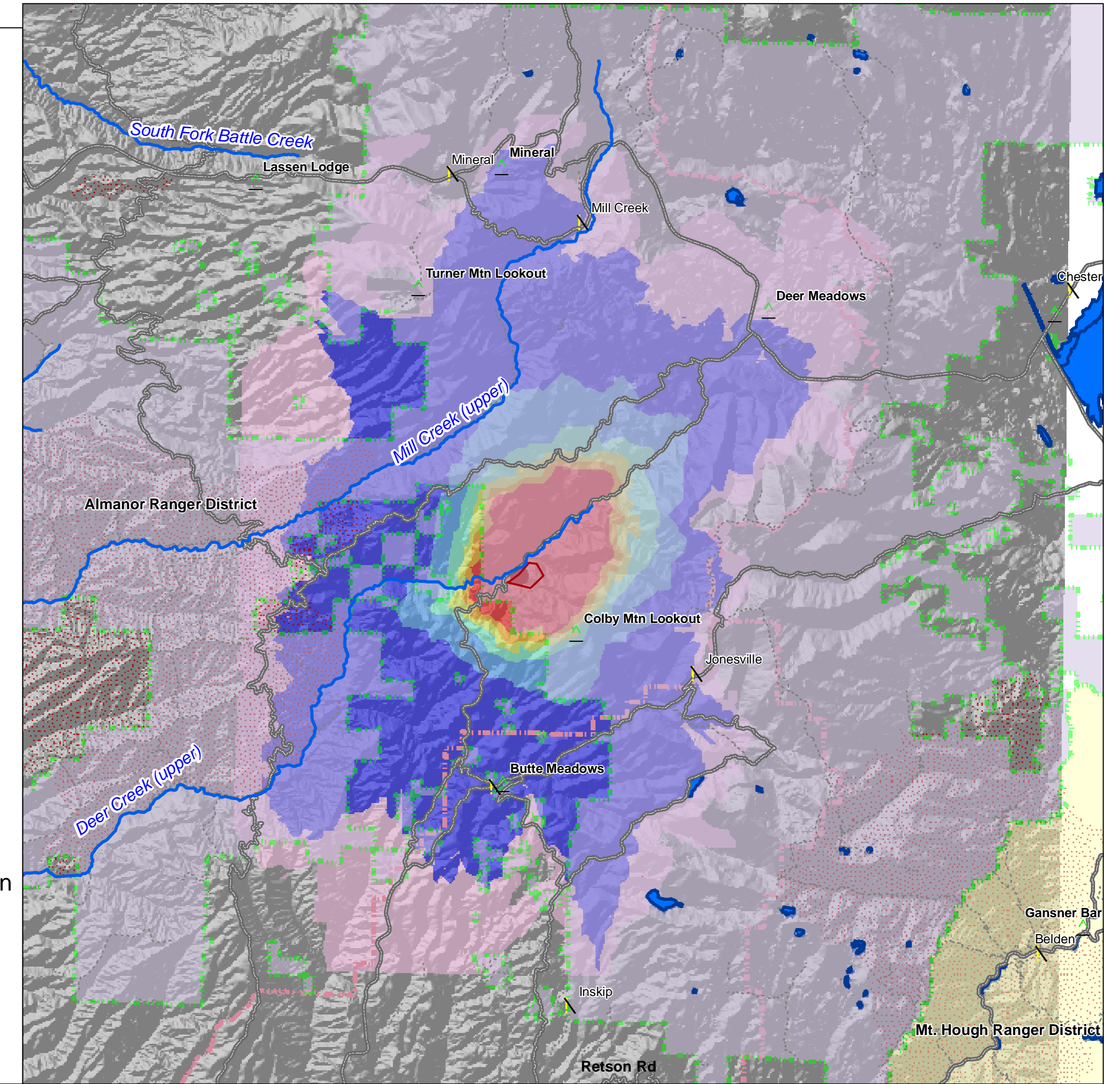
Fire Perimeter 11 Aug 0000h

Past Fires CA 1994 - 2006

FSPRO Fire Spread Probability

- > 80 %
- 60 - 80 %
- 40 - 60 %
- 20 - 40 %
- 5 - 20 %
- 1 - 5 %
- < 1 %

\ Communities at Risk
 △ Forest Service Facilities
 — Major Roads
 - - - Trails (USFS)
 — Chinook Critical Habitat & Distribution
Ranger District Boundary
 ▨ Almanor Ranger District
 ▩ Mt. Hough Ranger District
 - - - County Boundary
 ■ Water Bodies



Direct Protection Areas

MODIS Points: 11 Aug 1000h

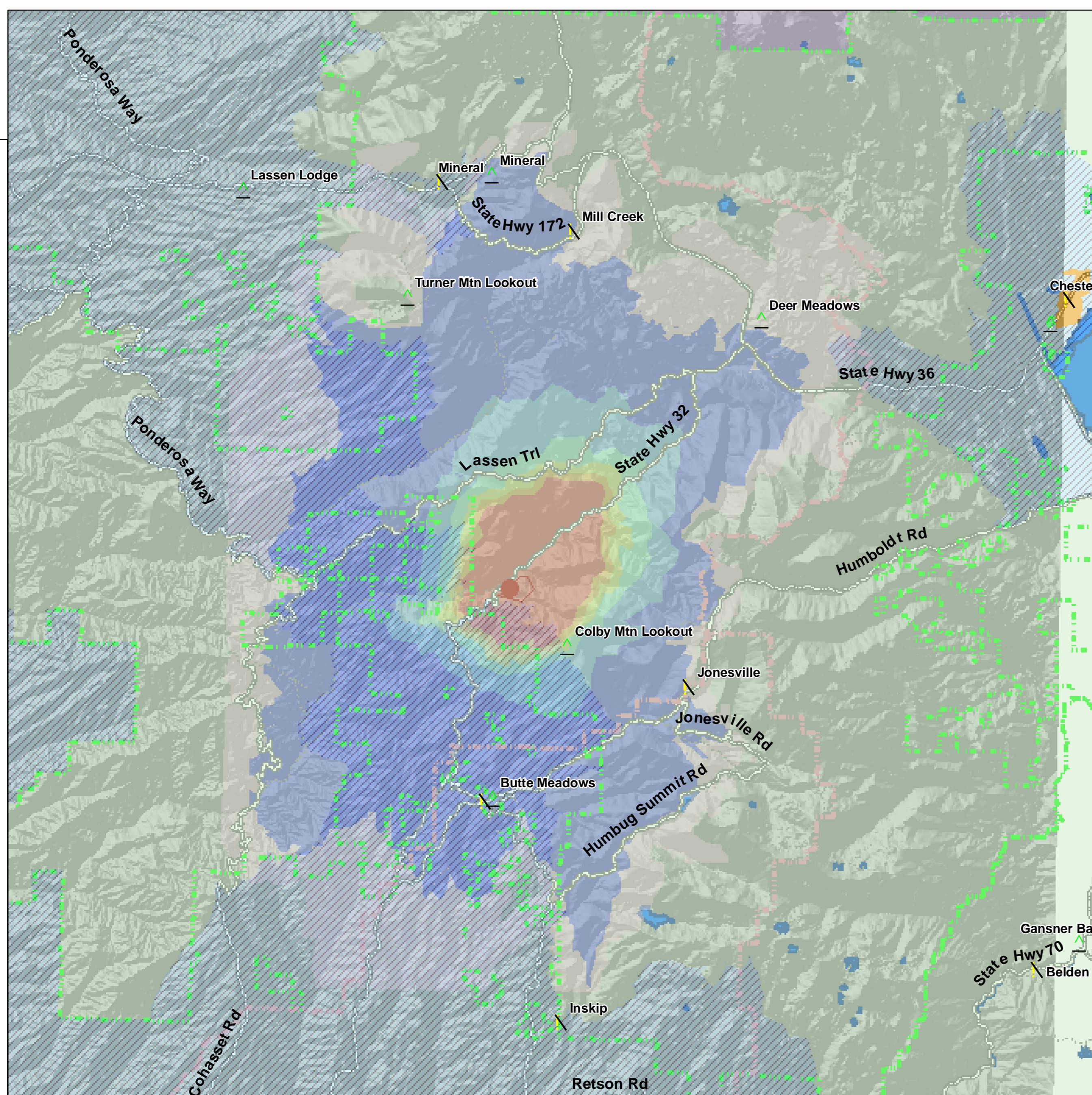
- 11 August
- 10 August
- Prior 6 days

Fire Perimeter 11 Aug 0000h

FSPRO Fire Spread Probability

- > 80 %
- 60 - 80 %
- 40 - 60 %
- 20 - 40 %
- 5 - 20 %
- 1 - 5 %
- < 1 %

\ Communities at Risk
 △ Forest Service Facilities
 — Major Roads
 - - - Trails (USFS)
 - - - Ranger District Boundary
 - - - County Boundary
Direct Protection Areas
 ▨ CDF
 ■ LOCAL
 ■ NPS
 ■ USFS
 ■ Water Bodies



Recreation Opportunity Spectrum Zones & Steelhead Critical Habitat/Distribution

MODIS Points: 11 Aug 1000h

- 11 August
- 10 August
- Prior 6 days

Fire Perimeter 11 Aug 0000h

FSPRO Fire Spread Probability

- > 80 %
- 60 - 80 %
- 40 - 60 %
- 20 - 40 %
- 5 - 20 %
- 1 - 5 %
- < 1 %

\ Communities at Risk
 △ Forest Service Facilities
 — Major Roads
 - - - Trails (USFS)
 — Steelhead Critical Habitat & Distribution
 - - - County Boundary
Recreation Opportunity Spectrum Zones
 ■ Natural/Roaded
 ▨ Primitive/Non-motorized
 ■ Rural
 ▨ Semi-Primitive/Non-motorized
 ■ Water Bodies

