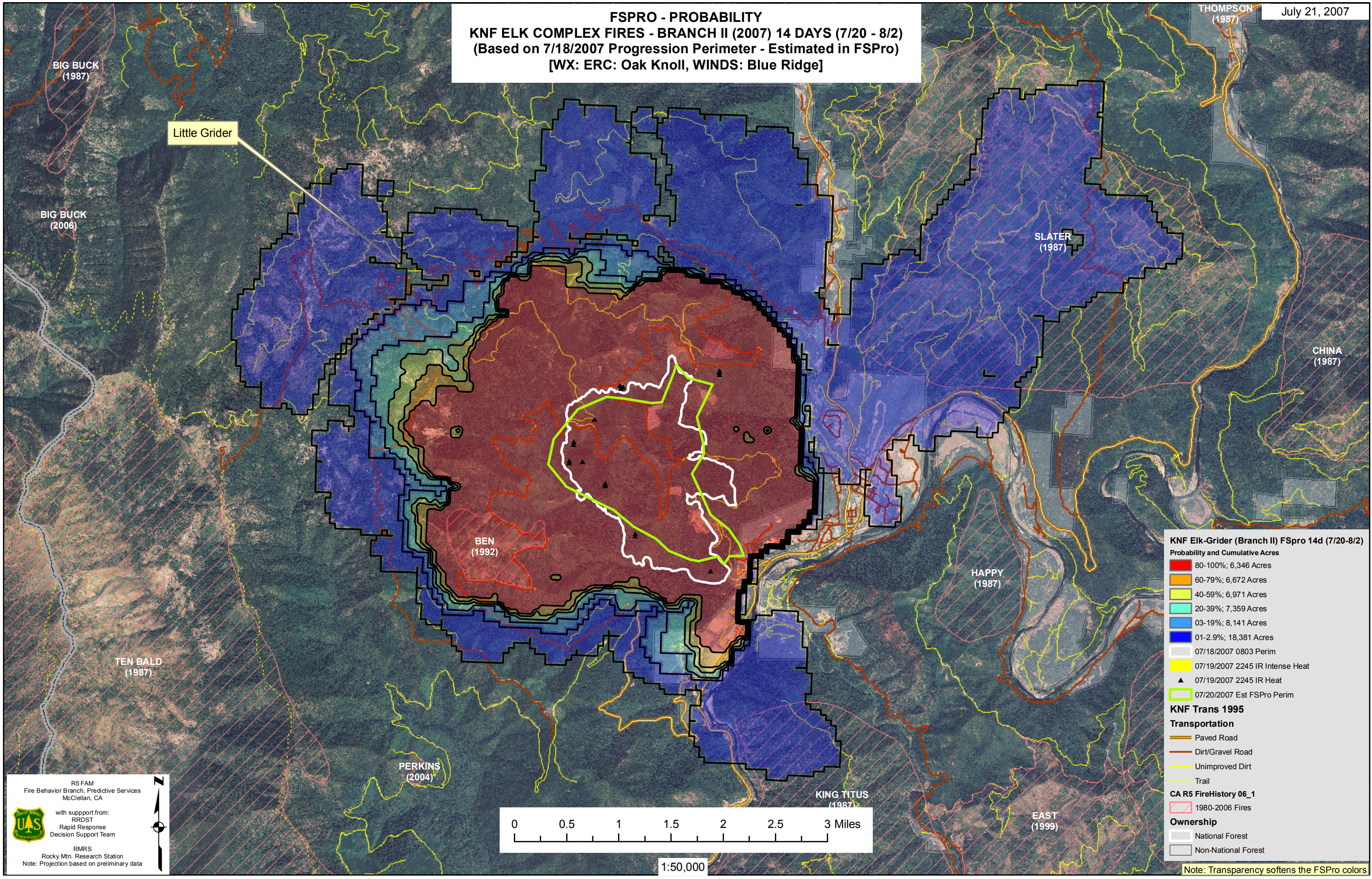


FSPRO - PROBABILITY KNF ELK COMPLEX FIRES - BRANCH II (2007) 14 DAYS (7/20 - 8/2) (Based on 7/18/2007 Progression Perimeter - Estimated in FSPro) [WX: ERC: Oak Knoll, WINDS: Blue Ridge]



KNF Elk-Grider (Branch II) FSPro 14d (7/20-8/2)

Probability and Cumulative Acres

- 80-100%; 6,346 Acres
- 60-79%; 6,672 Acres
- 40-59%; 6,971 Acres
- 20-39%; 7,359 Acres
- 03-19%; 8,141 Acres
- 01-2.9%; 18,381 Acres

Other Features:

- 07/18/2007 0803 Perim
- 07/19/2007 2245 IR Intense Heat
- 07/19/2007 2245 IR Heat
- 07/20/2007 Est FSPro Perim

KNF Trans 1995

Transportation

- Paved Road
- Dirt/Gravel Road
- Unimproved Dirt
- Trail

CA R5 FireHistory 06_1

- 1980-2006 Fires

Ownership

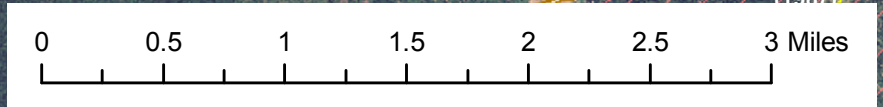
- National Forest
- Non-National Forest

Note: Transparency softens the FSPro colors

R5 FAM
Fire Behavior Branch, Predictive Services
McClellan, CA

with support from:
RRDST
Rapid Response
Decision Support Team

RMRS
Rocky Mtn. Research Station
Note: Projection based on preliminary data



1:50,000