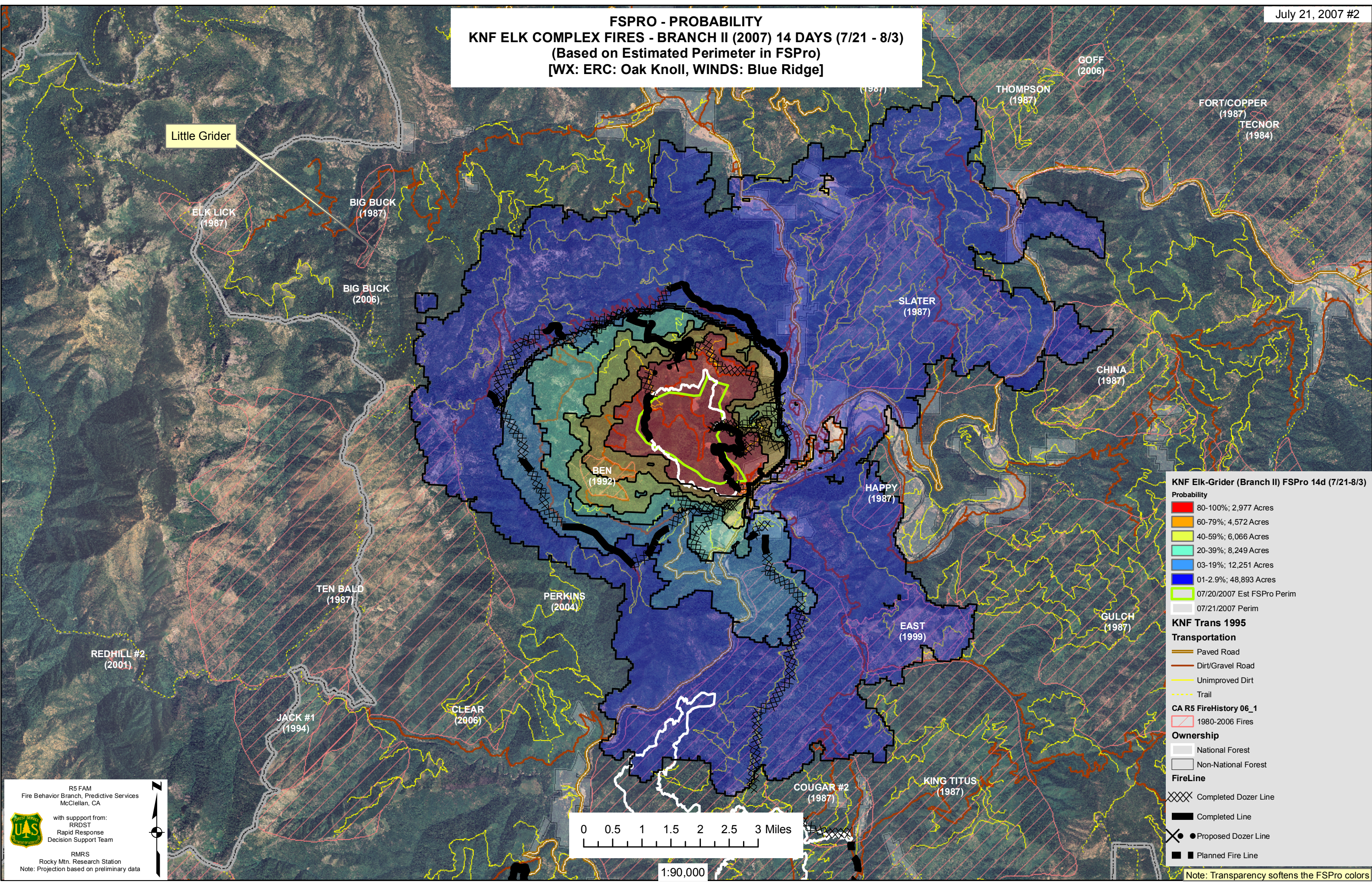


### FSPRO - PROBABILITY KNF ELK COMPLEX FIRES - BRANCH II (2007) 14 DAYS (7/21 - 8/3) (Based on Estimated Perimeter in FSPro) [WX: ERC: Oak Knoll, WINDS: Blue Ridge]



**KNF Elk-Grider (Branch II) FSPro 14d (7/21-8/3)**

**Probability**

- 80-100%; 2,977 Acres
- 60-79%; 4,572 Acres
- 40-59%; 6,066 Acres
- 20-39%; 8,249 Acres
- 03-19%; 12,251 Acres
- 01-2.9%; 48,893 Acres
- 07/20/2007 Est FSPro Perim
- 07/21/2007 Perim

**KNF Trans 1995**

**Transportation**

- Paved Road
- Dirt/Gravel Road
- Unimproved Dirt
- Trail

**CA R5 FireHistory 06\_1**

- 1980-2006 Fires

**Ownership**

- National Forest
- Non-National Forest

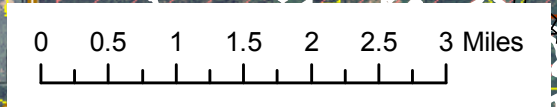
**FireLine**

- Completed Dozer Line
- Completed Line
- Proposed Dozer Line
- Planned Fire Line

R5 FAM  
Fire Behavior Branch, Predictive Services  
McClellan, CA

with support from:  
RRDST  
Rapid Response  
Decision Support Team

RMRS  
Rocky Mtn. Research Station  
Note: Projection based on preliminary data



1:90,000

Note: Transparency softens the FSPro colors