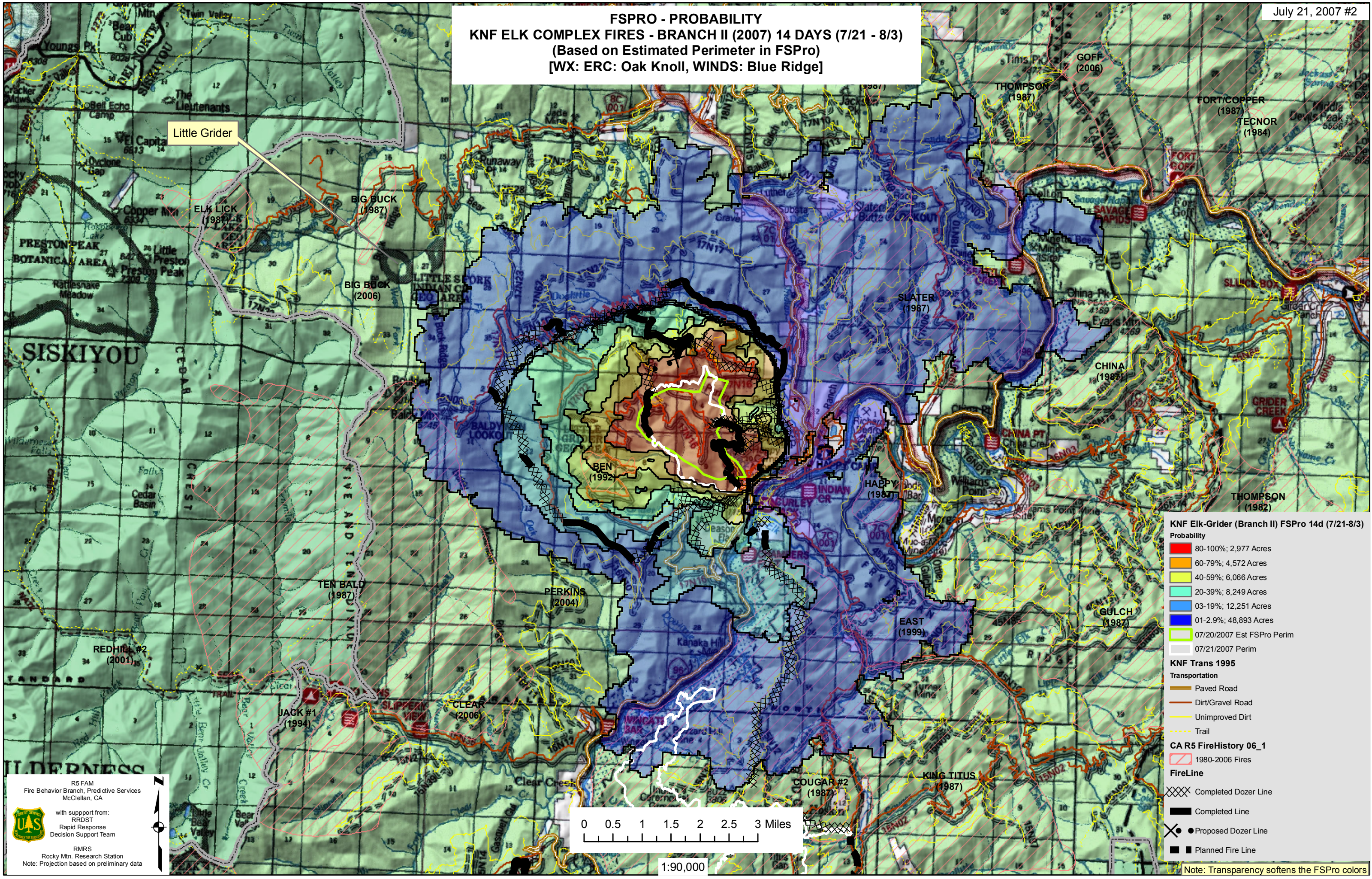


FSPRO - PROBABILITY KNF ELK COMPLEX FIRES - BRANCH II (2007) 14 DAYS (7/21 - 8/3) (Based on Estimated Perimeter in FSPro) [WX: ERC: Oak Knoll, WINDS: Blue Ridge]



KNF Elk-Grider (Branch II) FSPro 14d (7/21-8/3)

Probability

- 80-100%; 2,977 Acres
- 60-79%; 4,572 Acres
- 40-59%; 6,066 Acres
- 20-39%; 8,249 Acres
- 03-19%; 12,251 Acres
- 01-2.9%; 48,893 Acres
- 07/20/2007 Est FSPro Perim
- 07/21/2007 Perim

KNF Trans 1995

Transportation

- Paved Road
- Dirt/Gravel Road
- Unimproved Dirt
- Trail

CA R5 FireHistory 06_1

- 1980-2006 Fires

FireLine

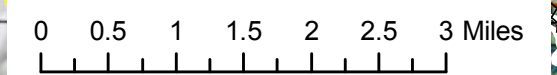
- Completed Dozer Line
- Completed Line
- Proposed Dozer Line
- Planned Fire Line

Note: Transparency softens the FSPro colors

R5 FAM
Fire Behavior Branch, Predictive Services
McClellan, CA

with support from:
RRDST
Rapid Response
Decision Support Team

RMRS
Rocky Mtn. Research Station
Note: Projection based on preliminary data



1:90,000