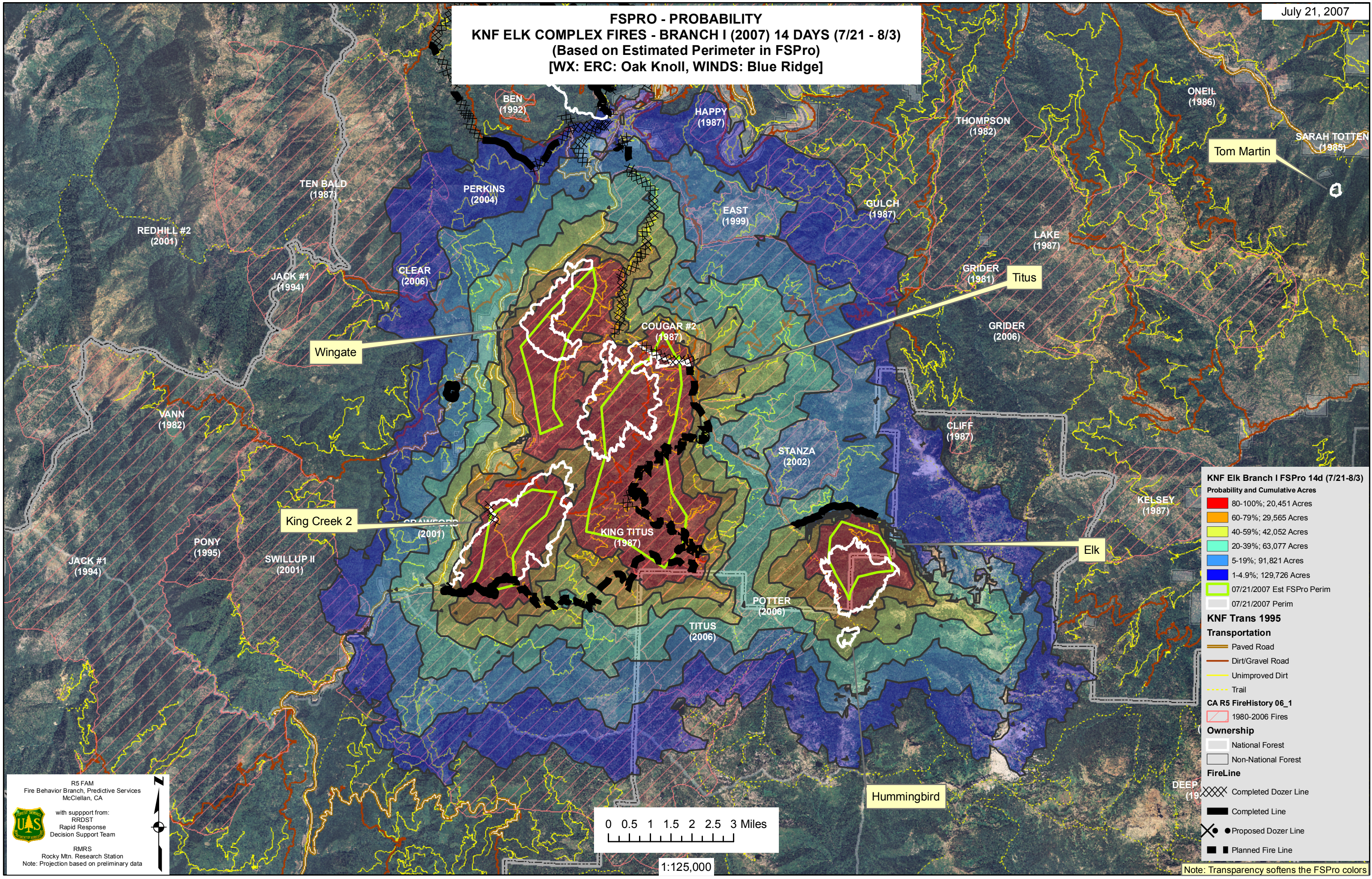


FSPRO - PROBABILITY KNF ELK COMPLEX FIRES - BRANCH I (2007) 14 DAYS (7/21 - 8/3) (Based on Estimated Perimeter in FSPro) [WX: ERC: Oak Knoll, WINDS: Blue Ridge]



KNF Elk Branch I FSPro 14d (7/21-8/3)
Probability and Cumulative Acres

- 80-100%; 20,451 Acres
- 60-79%; 29,565 Acres
- 40-59%; 42,052 Acres
- 20-39%; 63,077 Acres
- 5-19%; 91,821 Acres
- 1-4.9%; 129,726 Acres
- 07/21/2007 Est FSPro Perim
- 07/21/2007 Perim

KNF Trans 1995

Transportation

- Paved Road
- Dirt/Gravel Road
- Unimproved Dirt
- Trail

CA R5 FireHistory 06_1

- 1980-2006 Fires

Ownership

- National Forest
- Non-National Forest

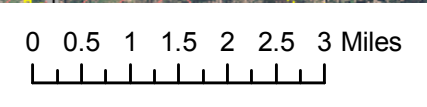
FireLine

- Completed Dozer Line
- Completed Line
- Proposed Dozer Line
- Planned Fire Line

R5 FAM
Fire Behavior Branch, Predictive Services
McClellan, CA

with support from:
RRDST
Rapid Response
Decision Support Team

RMRS
Rocky Mtn. Research Station
Note: Projection based on preliminary data



1:125,000

Note: Transparency softens the FSPro colors