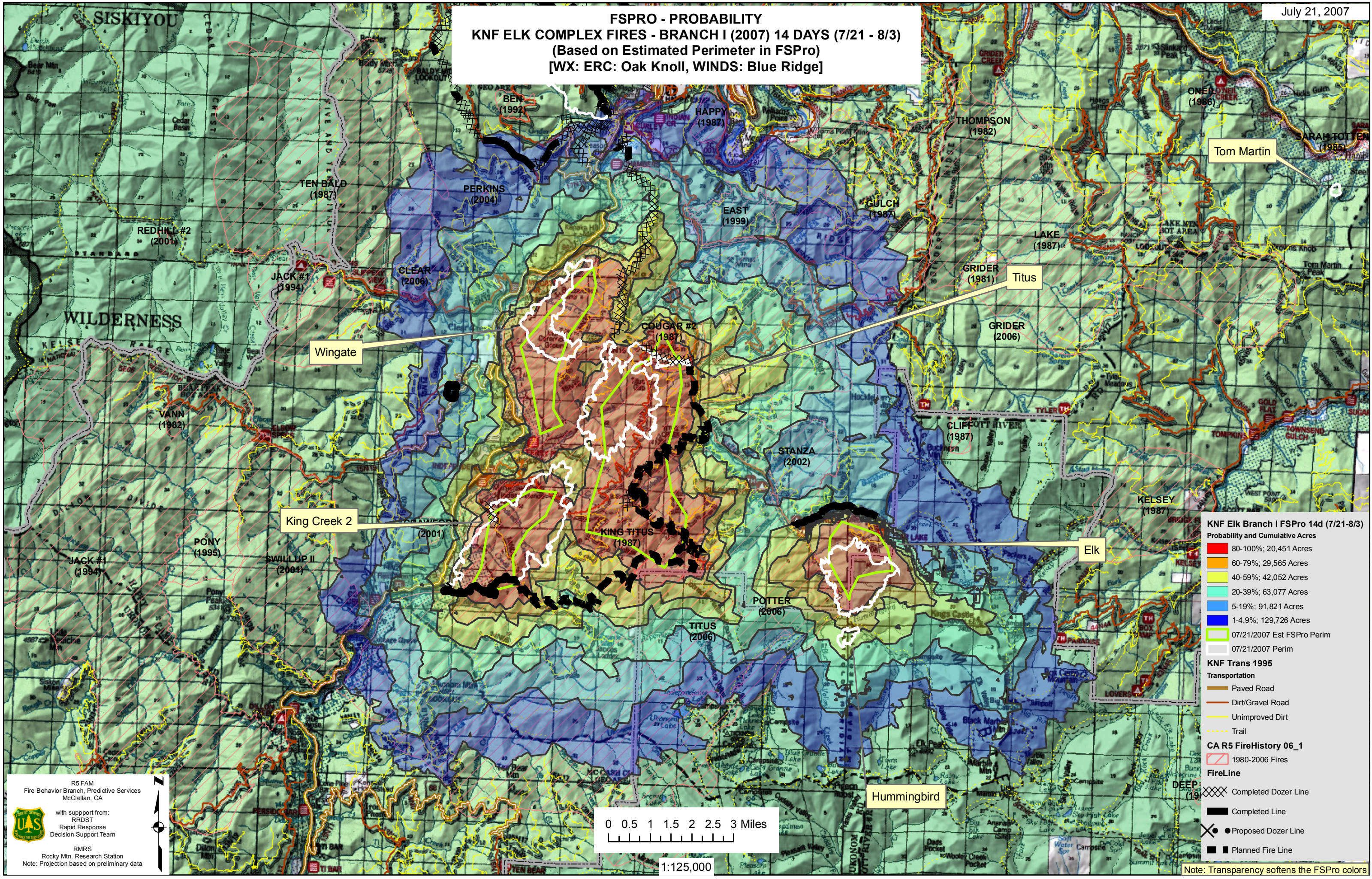


### FSPRO - PROBABILITY KNF ELK COMPLEX FIRES - BRANCH I (2007) 14 DAYS (7/21 - 8/3) (Based on Estimated Perimeter in FSPro) [WX: ERC: Oak Knoll, WINDS: Blue Ridge]



**KNF Elk Branch I FSPro 14d (7/21-8/3)**  
Probability and Cumulative Acres

80-100%; 20,451 Acres
60-79%; 29,565 Acres
40-59%; 42,052 Acres
20-39%; 63,077 Acres
5-19%; 91,821 Acres
1-4.9%; 129,726 Acres
07/21/2007 Est FSPro Perim
07/21/2007 Perim

**KNF Trans 1995**  
Transportation

Paved Road
Dirt/Gravel Road
Unimproved Dirt
Trail

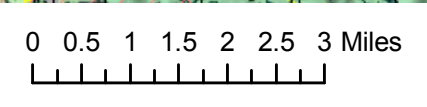
**CA R5 FireHistory 06\_1**  
FireLine

1980-2006 Fires
Completed Dozer Line
Completed Line
Proposed Dozer Line
Planned Fire Line

R5 FAM  
Fire Behavior Branch, Predictive Services  
McClellan, CA

with support from:  
RRDST  
Rapid Response  
Decision Support Team

RMRS  
Rocky Mtn. Research Station  
Note: Projection based on preliminary data



1:125,000

Note: Transparency softens the FSPro colors