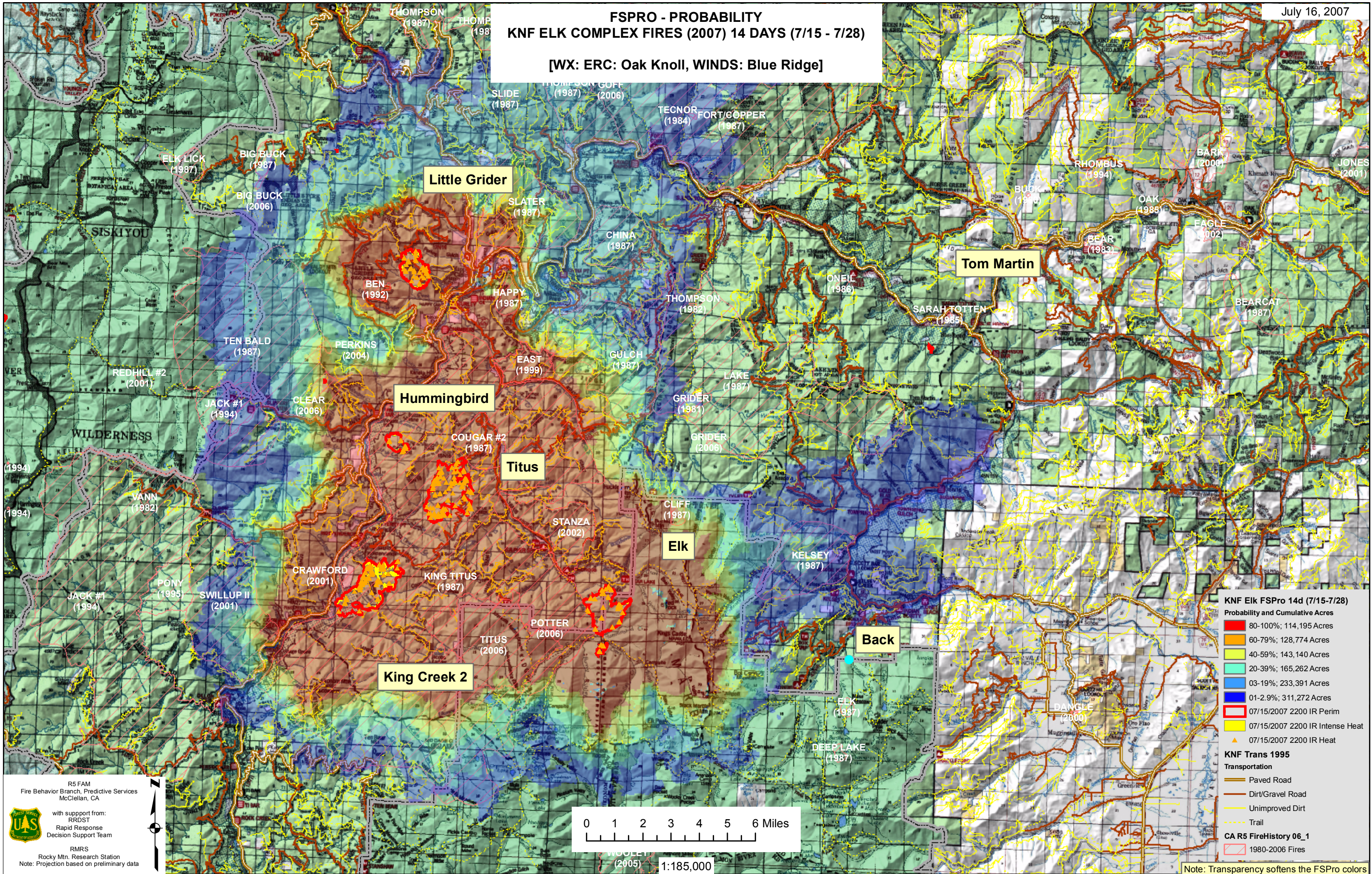


# FSPRO - PROBABILITY KNF ELK COMPLEX FIRES (2007) 14 DAYS (7/15 - 7/28)

[WX: ERC: Oak Knoll, WINDS: Blue Ridge]



**KNF Elk FSPro 14d (7/15-7/28)**  
**Probability and Cumulative Acres**

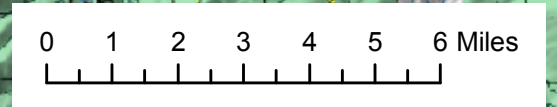
- 80-100%; 114,195 Acres
- 60-79%; 128,774 Acres
- 40-59%; 143,140 Acres
- 20-39%; 165,262 Acres
- 03-19%; 233,391 Acres
- 01-2.9%; 311,272 Acres

07/15/2007 2200 IR Perim  
07/15/2007 2200 IR Intense Heat  
07/15/2007 2200 IR Heat

**KNF Trans 1995**  
**Transportation**

- Paved Road
- Dirt/Gravel Road
- Unimproved Dirt
- Trail

**CA R5 FireHistory 06\_1**  
1980-2006 Fires



1:185,000

R5 FAM  
Fire Behavior Branch, Predictive Services  
McClellan, CA

with support from:  
RRDST  
Rapid Response  
Decision Support Team

RMRS  
Rocky Mtn. Research Station  
Note: Projection based on preliminary data

Note: Transparency softens the FSPro colors