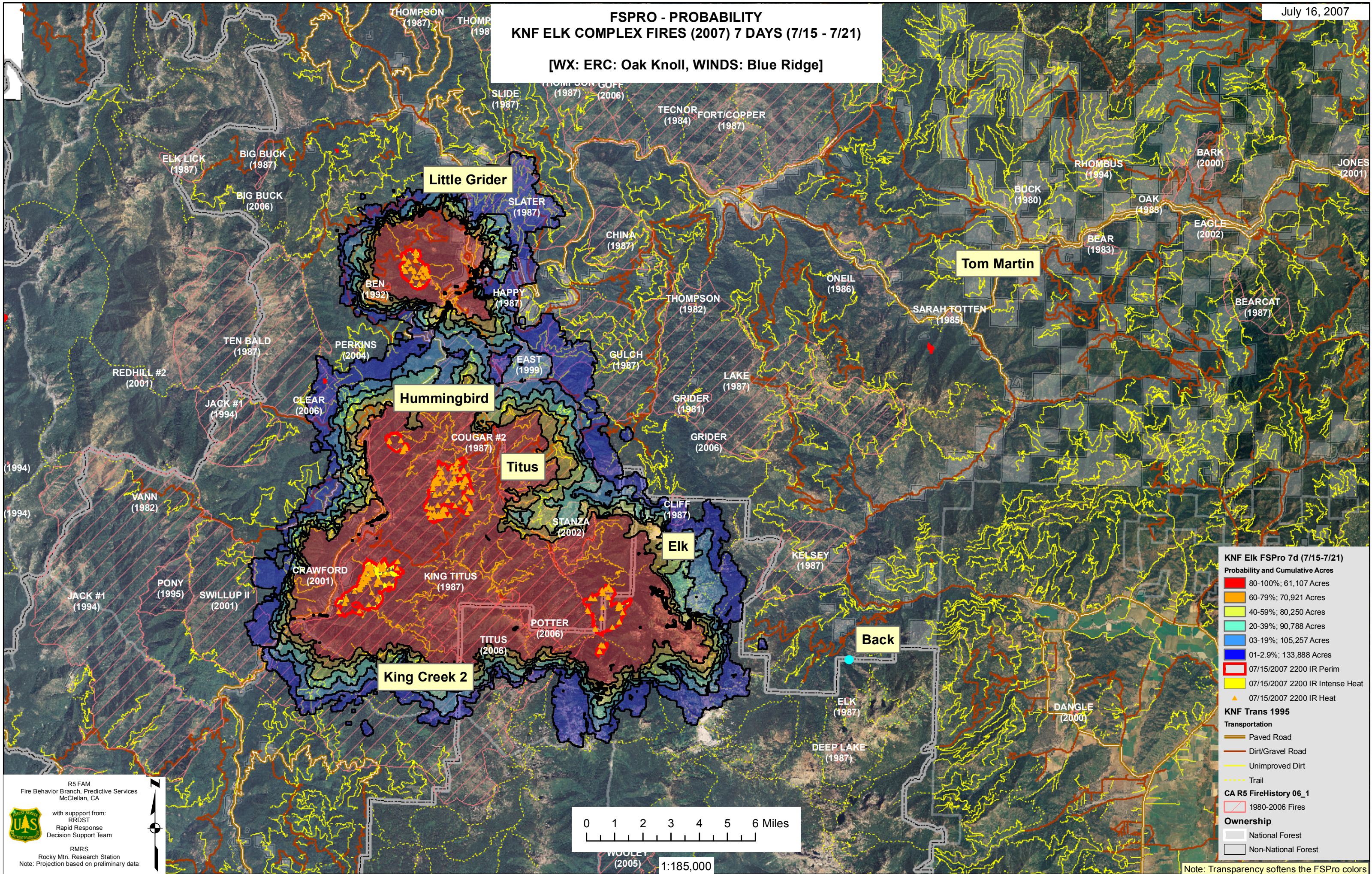


# FSPRO - PROBABILITY KNF ELK COMPLEX FIRES (2007) 7 DAYS (7/15 - 7/21)

[WX: ERC: Oak Knoll, WINDS: Blue Ridge]



**KNF Elk FSPro 7d (7/15-7/21)**

**Probability and Cumulative Acres**

- 80-100%; 61,107 Acres
- 60-79%; 70,921 Acres
- 40-59%; 80,250 Acres
- 20-39%; 90,788 Acres
- 03-19%; 105,257 Acres
- 01-2.9%; 133,888 Acres

07/15/2007 2200 IR Perim

07/15/2007 2200 IR Intense Heat

07/15/2007 2200 IR Heat

**KNF Trans 1995**

**Transportation**

- Paved Road
- Dirt/Gravel Road
- Unimproved Dirt
- Trail

**CA R5 FireHistory 06\_1**

- 1980-2006 Fires

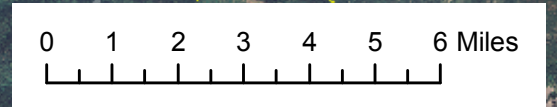
**Ownership**

- National Forest
- Non-National Forest

R5 FAM  
Fire Behavior Branch, Predictive Services  
McClellan, CA

with support from:  
RRDST  
Rapid Response  
Decision Support Team

RMRS  
Rocky Mtn. Research Station  
Note: Projection based on preliminary data



1:185,000

Note: Transparency softens the FSPro colors