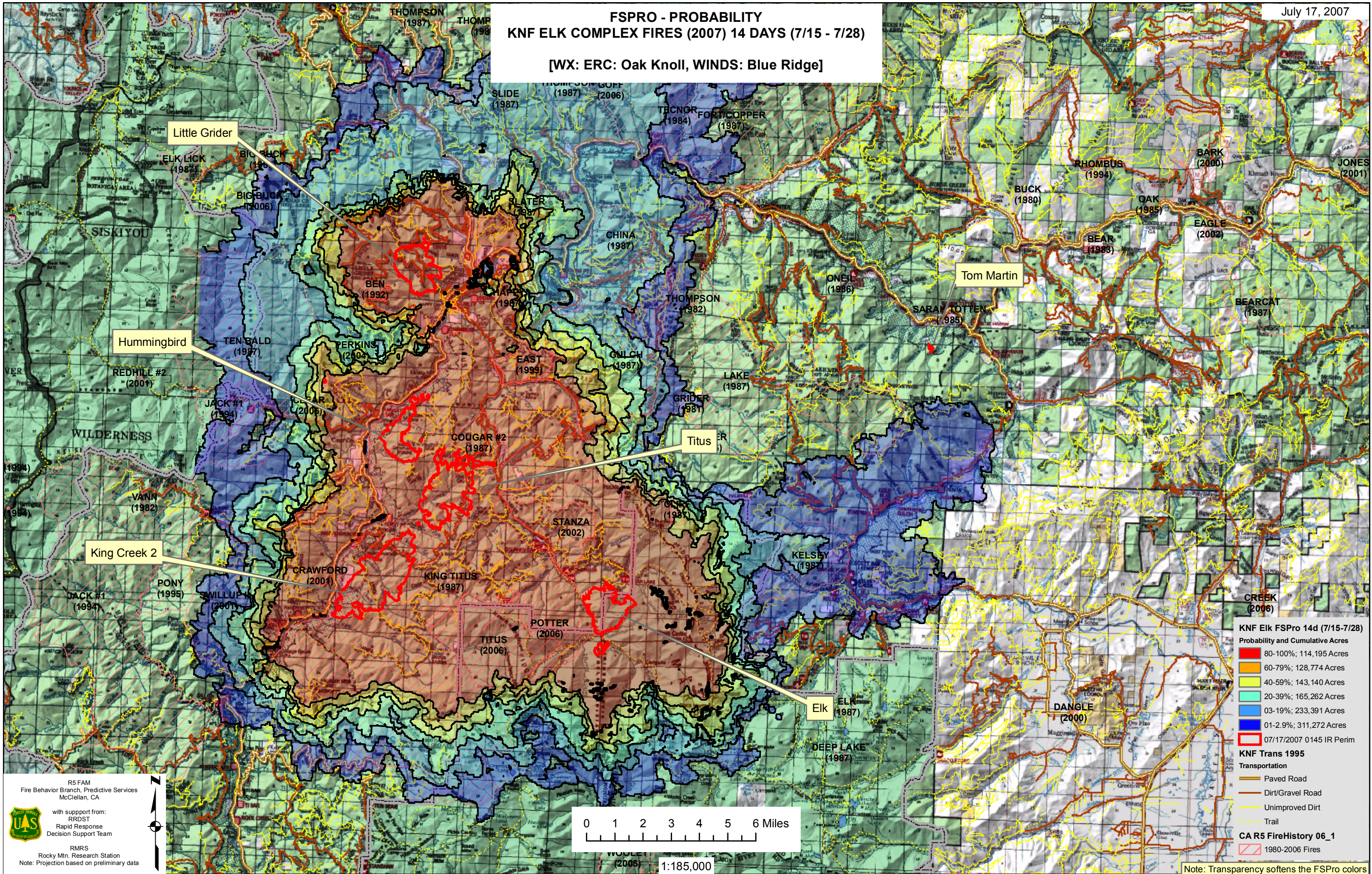


FSPRO - PROBABILITY KNF ELK COMPLEX FIRES (2007) 14 DAYS (7/15 - 7/28)

[WX: ERC: Oak Knoll, WINDS: Blue Ridge]



Little Grider

Tom Martin

Hummingbird

Titus

King Creek 2

Elk

KNF Elk FSPro 14d (7/15-7/28)

Probability and Cumulative Acres

80-100%	114,195 Acres
60-79%	128,774 Acres
40-59%	143,140 Acres
20-39%	165,262 Acres
03-19%	233,391 Acres
01-2.9%	311,272 Acres
07/17/2007 0145 IR Perim	

KNF Trans 1995

- Transportation
- Paved Road
 - Dirt/Gravel Road
 - Unimproved Dirt
 - Trail

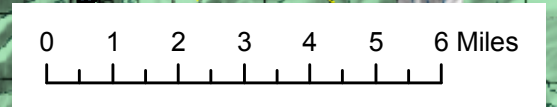
CA R5 FireHistory 06_1

- 1980-2006 Fires

R5 FAM
Fire Behavior Branch, Predictive Services
McClellan, CA

with support from:
RRDST
Rapid Response
Decision Support Team

RMRS
Rocky Mtn. Research Station
Note: Projection based on preliminary data



1:185,000

Note: Transparency softens the FSPro colors