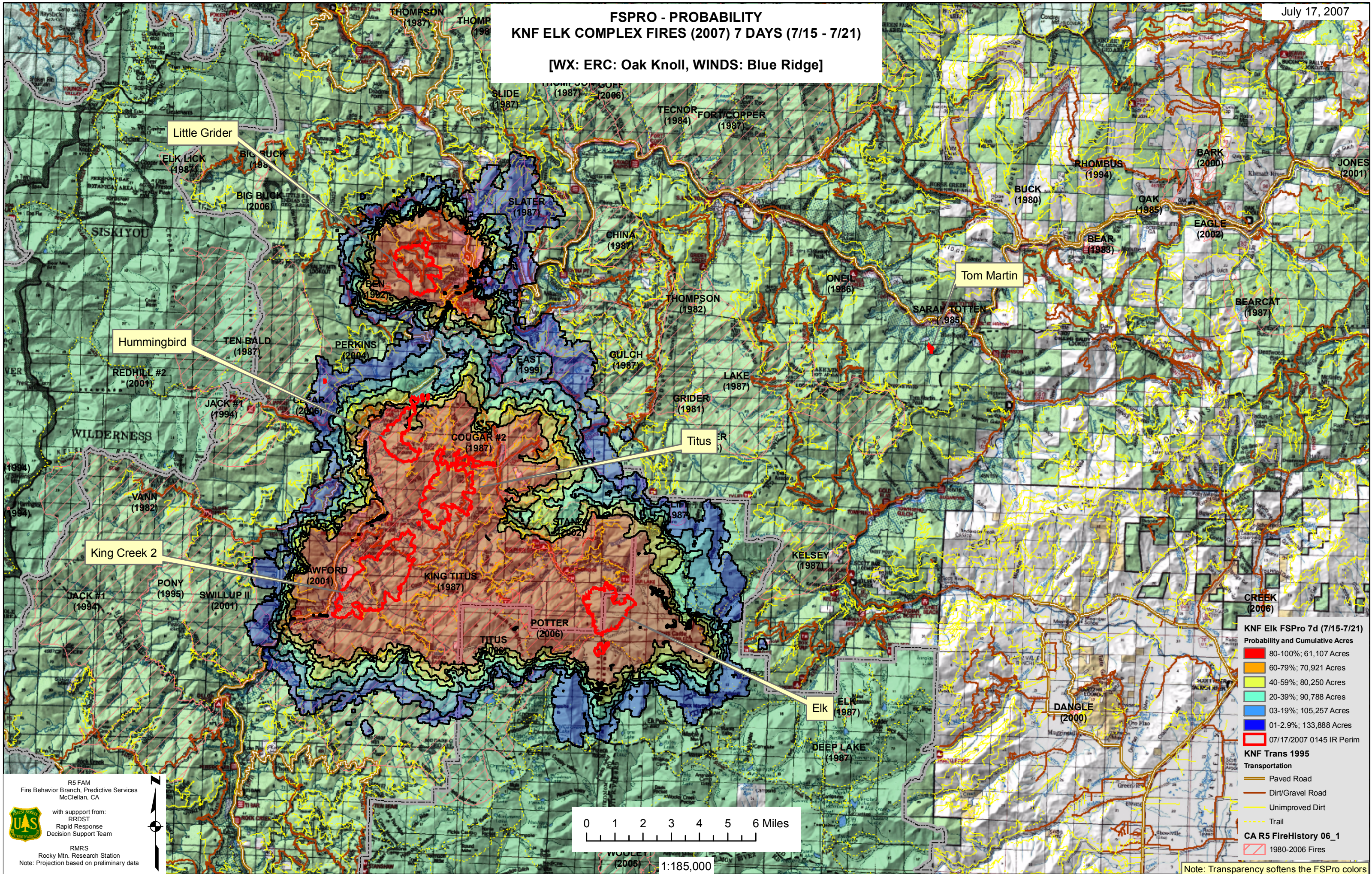


FSPRO - PROBABILITY KNF ELK COMPLEX FIRES (2007) 7 DAYS (7/15 - 7/21)

[WX: ERC: Oak Knoll, WINDS: Blue Ridge]



Little Grider

Tom Martin

Hummingbird

Titus

King Creek 2

Elk

KNF Elk FSPro 7d (7/15-7/21)

Probability and Cumulative Acres

80-100%	61,107 Acres
60-79%	70,921 Acres
40-59%	80,250 Acres
20-39%	90,788 Acres
03-19%	105,257 Acres
01-2.9%	133,888 Acres
07/17/2007 0145 IR Perim	

KNF Trans 1995

Transportation

Paved Road
Dirt/Gravel Road
Unimproved Dirt
Trail

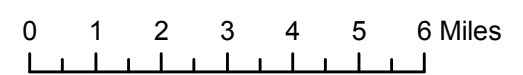
CA R5 FireHistory 06_1

1980-2006 Fires

R5 FAM
Fire Behavior Branch, Predictive Services
McClellan, CA

with support from:
RRDST
Rapid Response
Decision Support Team

RMRS
Rocky Mtn. Research Station
Note: Projection based on preliminary data



1:185,000

Note: Transparency softens the FSPro colors