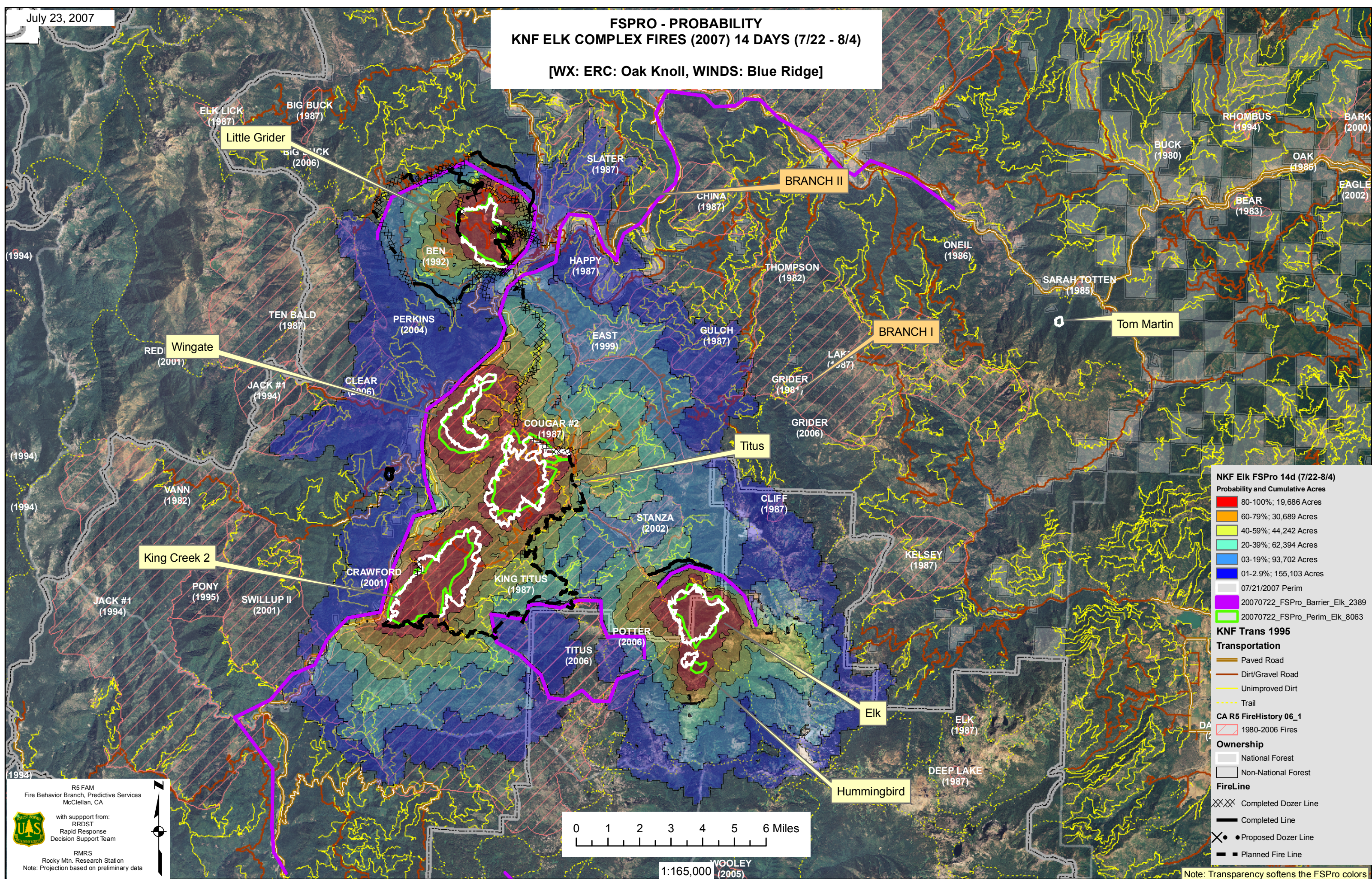


# FSPRO - PROBABILITY KNF ELK COMPLEX FIRES (2007) 14 DAYS (7/22 - 8/4)

[WX: ERC: Oak Knoll, WINDS: Blue Ridge]



### KNF Elk FSPro 14d (7/22-8/4)

Probability and Cumulative Acres

80-100%; 19,686 Acres
60-79%; 30,689 Acres
40-59%; 44,242 Acres
20-39%; 62,394 Acres
03-19%; 93,702 Acres
01-2.9%; 155,103 Acres
07/21/2007 Perim
20070722_FSPro_Barrier_Elk_2389
20070722_FSPro_Perim_Elk_8063

### KNF Trans 1995

Transportation

Paved Road
Dirt/Gravel Road
Unimproved Dirt
Trail

### CA R5 FireHistory 06\_1

1980-2006 Fires
-----------------

### Ownership

National Forest
Non-National Forest

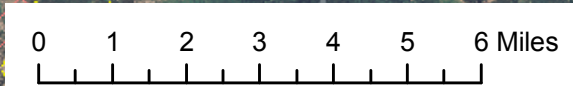
### FireLine

Completed Dozer Line
Completed Line
Proposed Dozer Line
Planned Fire Line

R5 FAM  
Fire Behavior Branch, Predictive Services  
McClellan, CA

with support from:  
RRDST  
Rapid Response  
Decision Support Team

RMRS  
Rocky Mtn. Research Station  
Note: Projection based on preliminary data



1:165,000 WOOLEY (2005)

Note: Transparency softens the FSPro colors