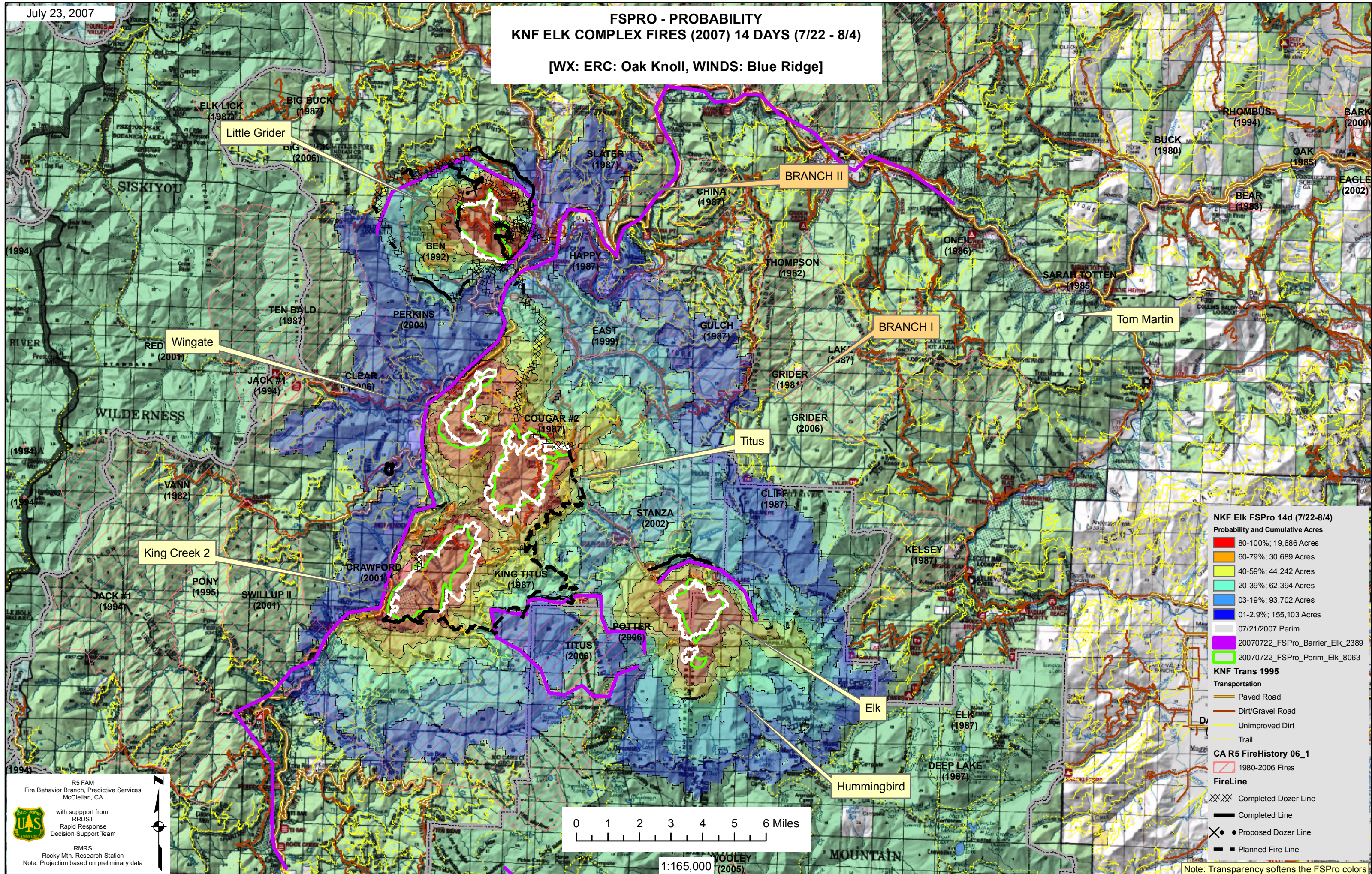


FSPRO - PROBABILITY KNF ELK COMPLEX FIRES (2007) 14 DAYS (7/22 - 8/4)

[WX: ERC: Oak Knoll, WINDS: Blue Ridge]



NKF Elk FSPRO 14d (7/22-8/4)
Probability and Cumulative Acres

- 80-100%; 19,686 Acres
- 60-79%; 30,689 Acres
- 40-59%; 44,242 Acres
- 20-39%; 62,394 Acres
- 03-19%; 93,702 Acres
- 01-2.9%; 155,103 Acres

07/21/2007 Perim
 20070722_FSPRO_Barrier_Elk_2389
 20070722_FSPRO_Perim_Elk_8063

KNF Trans 1995

Transportation

- Paved Road
- Dirt/Gravel Road
- Unimproved Dirt
- Trail

CA R5 FireHistory 06_1

- 1980-2006 Fires

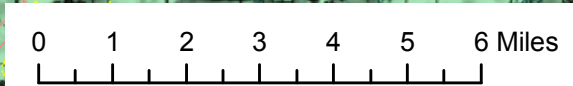
FireLine

- Completed Dozer Line
- Completed Line
- Proposed Dozer Line
- Planned Fire Line

R5 FAM
Fire Behavior Branch, Predictive Services
McClellan, CA

with support from:
RRDST
Rapid Response
Decision Support Team

RMRS
Rocky Mtn. Research Station
Note: Projection based on preliminary data



1:165,000

Note: Transparency softens the FSPRO colors