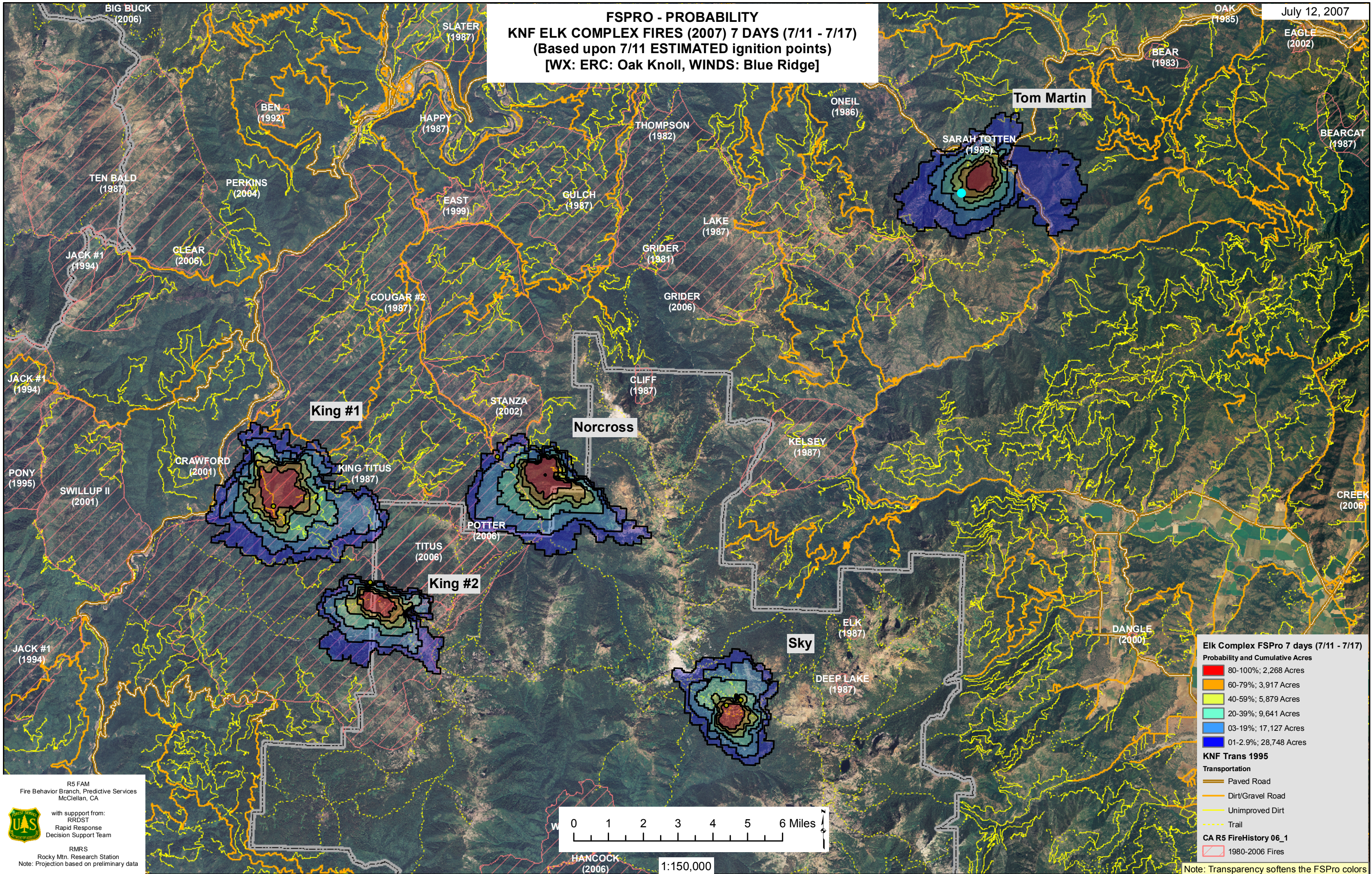


FSPRO - PROBABILITY KNF ELK COMPLEX FIRES (2007) 7 DAYS (7/11 - 7/17) (Based upon 7/11 ESTIMATED ignition points) [WX: ERC: Oak Knoll, WINDS: Blue Ridge]



Elk Complex FSPro 7 days (7/11 - 7/17)
Probability and Cumulative Acres

80-100%	2,268 Acres
60-79%	3,917 Acres
40-59%	5,879 Acres
20-39%	9,641 Acres
03-19%	17,127 Acres
01-2.9%	28,748 Acres

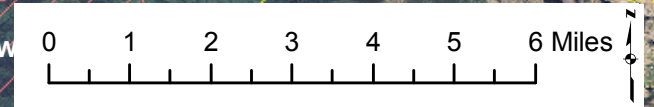
KNF Trans 1995

Transportation

- Paved Road
- Dirt/Gravel Road
- Unimproved Dirt
- Trail

CA R5 FireHistory 06_1

- 1980-2006 Fires



HANCOCK (2006) 1:150,000

R5 FAM
Fire Behavior Branch, Predictive Services
McClellan, CA

with support from:
RRDST
Rapid Response
Decision Support Team

RMRS
Rocky Mtn. Research Station
Note: Projection based on preliminary data

Note: Transparency softens the FSPro colors