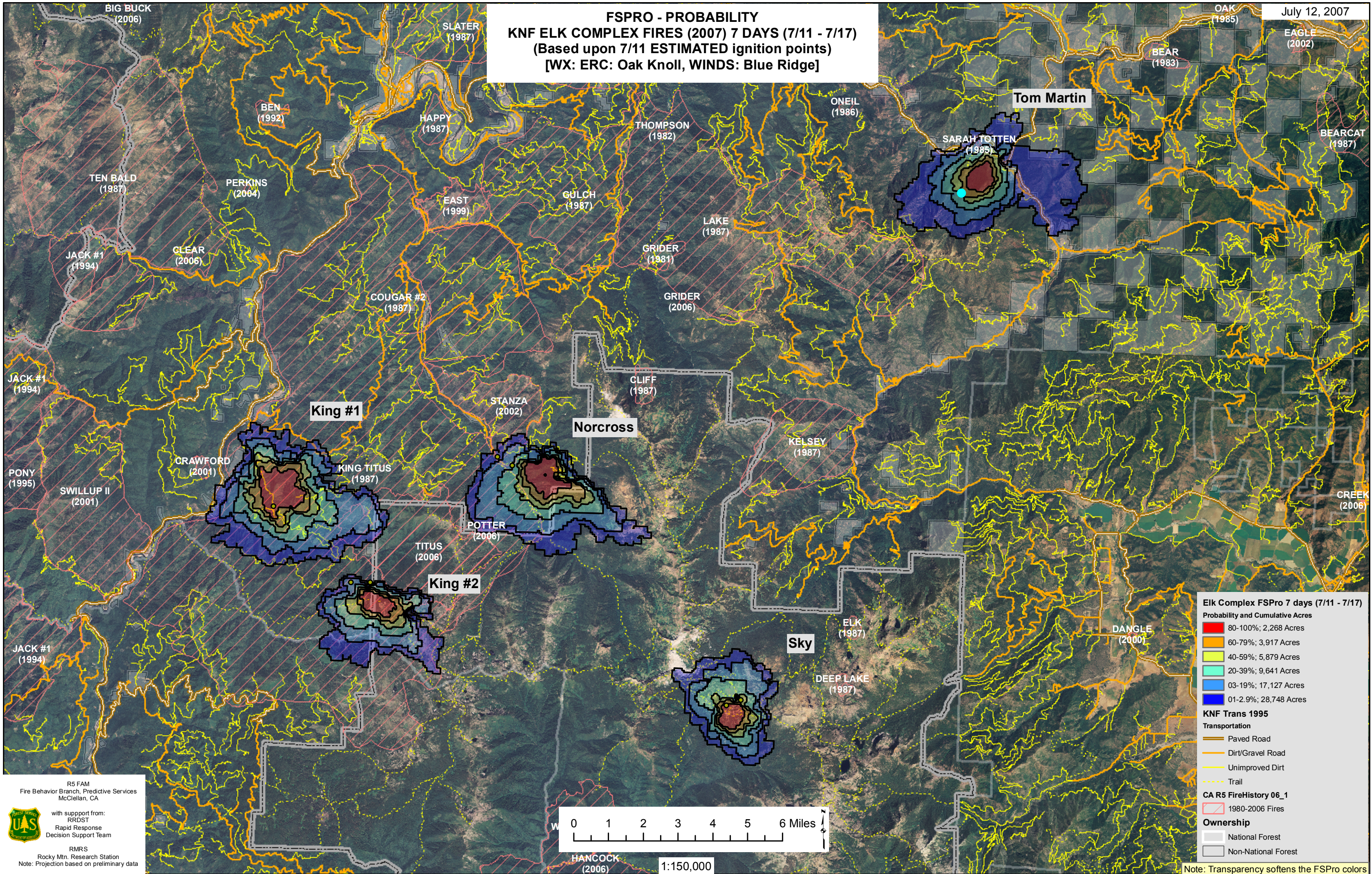


FSPRO - PROBABILITY KNF ELK COMPLEX FIRES (2007) 7 DAYS (7/11 - 7/17) (Based upon 7/11 ESTIMATED ignition points) [WX: ERC: Oak Knoll, WINDS: Blue Ridge]



Elk Complex FSPro 7 days (7/11 - 7/17)
Probability and Cumulative Acres

- 80-100%; 2,268 Acres
- 60-79%; 3,917 Acres
- 40-59%; 5,879 Acres
- 20-39%; 9,641 Acres
- 03-19%; 17,127 Acres
- 01-2.9%; 28,748 Acres

KNF Trans 1995

Transportation

- Paved Road
- Dirt/Gravel Road
- Unimproved Dirt
- Trail

CA R5 FireHistory 06_1

- 1980-2006 Fires

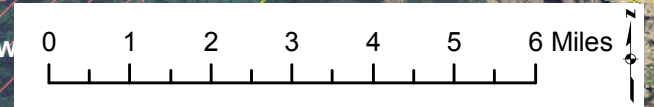
Ownership

- National Forest
- Non-National Forest

R5 FAM
Fire Behavior Branch, Predictive Services
McClellan, CA

with support from:
RRDST
Rapid Response
Decision Support Team

RMRS
Rocky Mtn. Research Station
Note: Projection based on preliminary data



1:150,000

Note: Transparency softens the FSPro colors