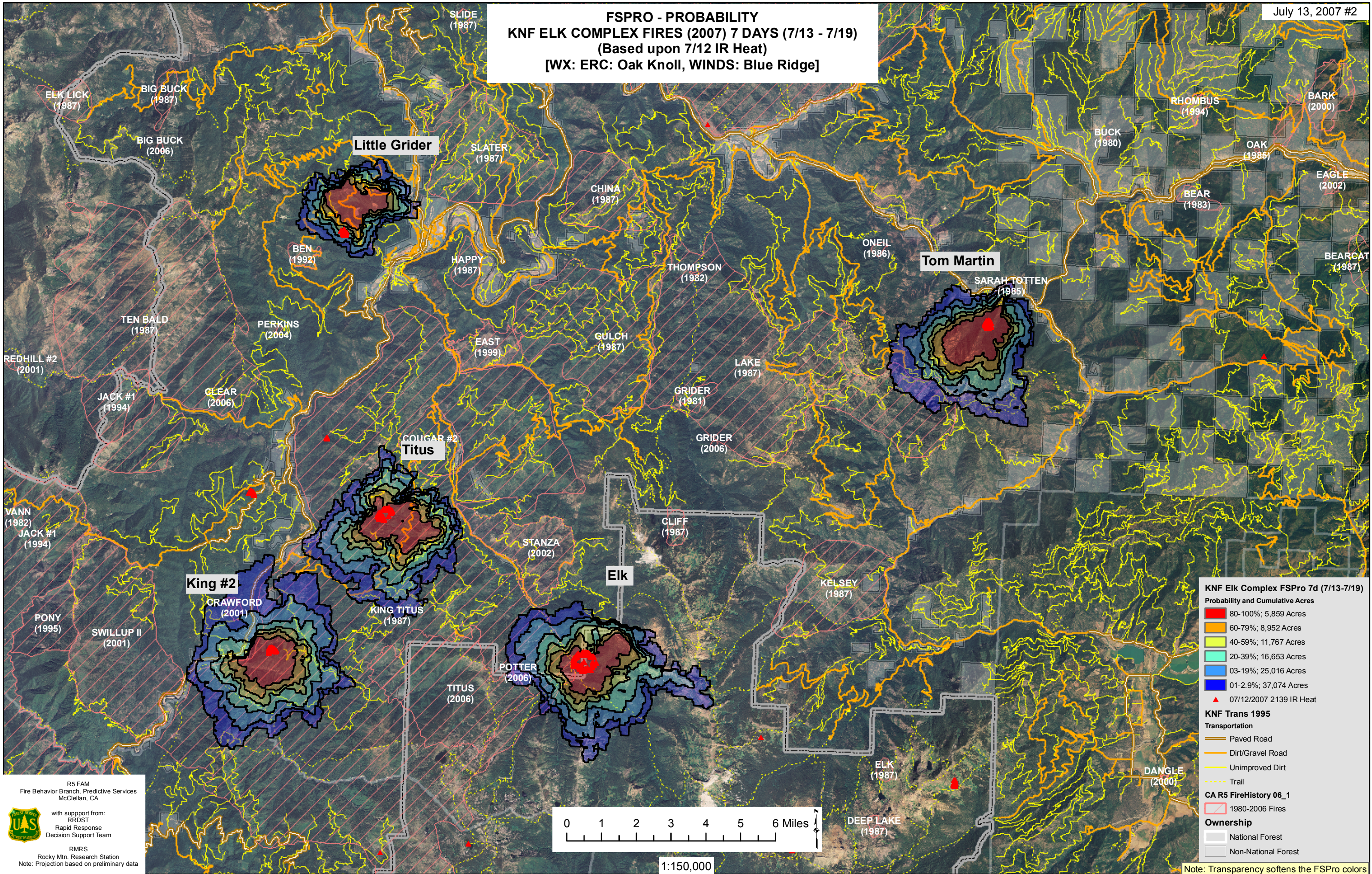


**FSPRO - PROBABILITY**  
**KNF ELK COMPLEX FIRES (2007) 7 DAYS (7/13 - 7/19)**  
(Based upon 7/12 IR Heat)  
[WX: ERC: Oak Knoll, WINDS: Blue Ridge]



**KNF Elk Complex FSPRO 7d (7/13-7/19)**  
Probability and Cumulative Acres

- 80-100%; 5,859 Acres
- 60-79%; 8,952 Acres
- 40-59%; 11,767 Acres
- 20-39%; 16,653 Acres
- 03-19%; 25,016 Acres
- 01-2.9%; 37,074 Acres

▲ 07/12/2007 2139 IR Heat

**KNF Trans 1995**  
Transportation

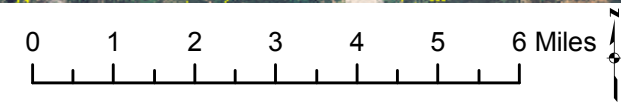
- Paved Road
- Dirt/Gravel Road
- Unimproved Dirt
- Trail

**CA R5 FireHistory 06\_1**

- 1980-2006 Fires

**Ownership**

- National Forest
- Non-National Forest



1:150,000

R5 FAM  
Fire Behavior Branch, Predictive Services  
McClellan, CA

with support from:  
RRDST  
Rapid Response  
Decision Support Team

RMRS  
Rocky Mtn. Research Station  
Note: Projection based on preliminary data

Note: Transparency softens the FSPRO colors