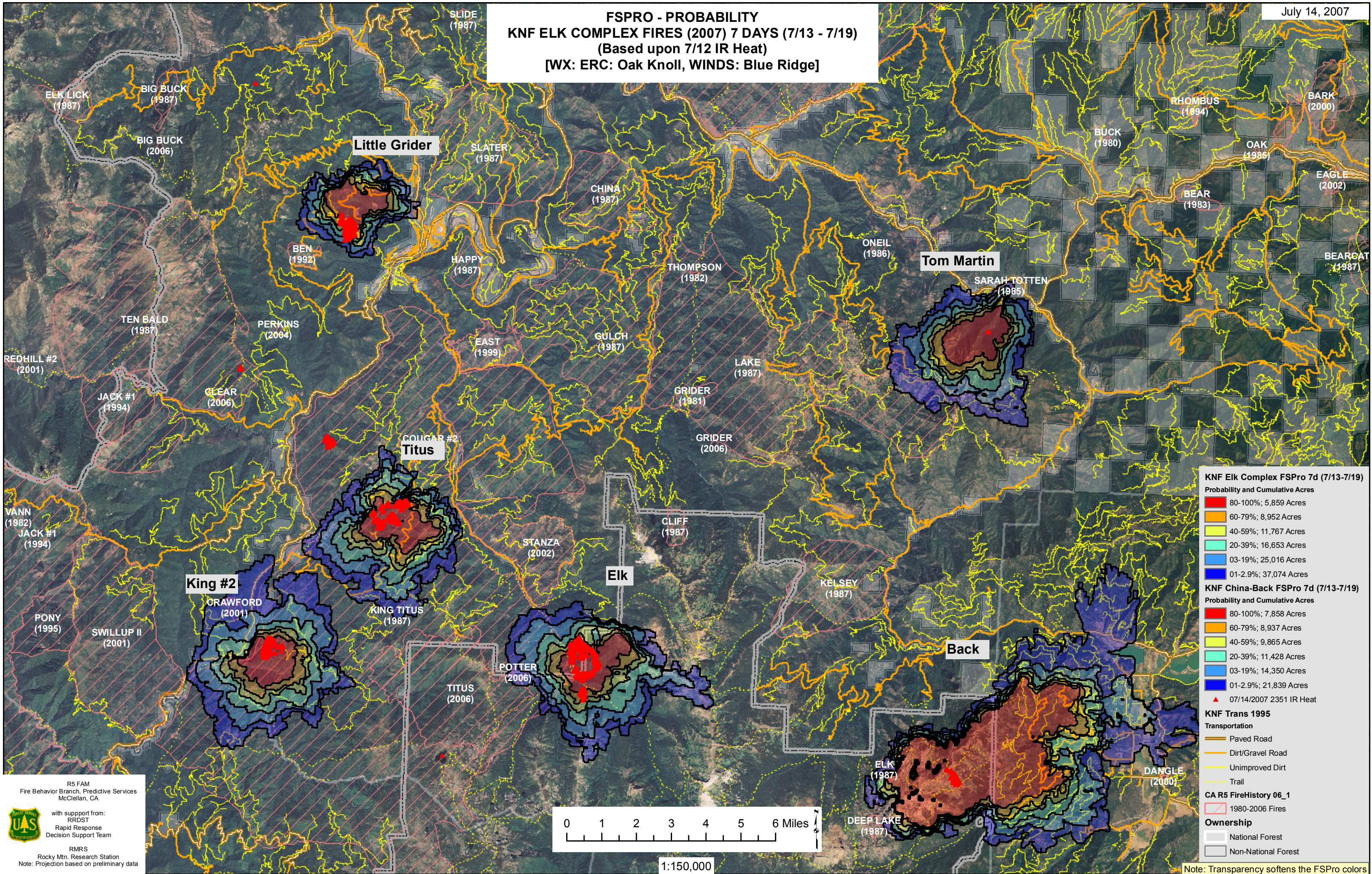


FSPRO - PROBABILITY
KNF ELK COMPLEX FIRES (2007) 7 DAYS (7/13 - 7/19)
(Based upon 7/12 IR Heat)
[WX: ERC: Oak Knoll, WINDS: Blue Ridge]



KNF Elk Complex FSPro 7d (7/13-7/19)
Probability and Cumulative Acres

- 80-100%; 5,859 Acres
- 60-79%; 8,952 Acres
- 40-59%; 11,767 Acres
- 20-39%; 16,653 Acres
- 03-19%; 25,016 Acres
- 01-2.9%; 37,074 Acres

KNF China-Back FSPro 7d (7/13-7/19)
Probability and Cumulative Acres

- 80-100%; 7,858 Acres
- 60-79%; 8,937 Acres
- 40-59%; 9,865 Acres
- 20-39%; 11,428 Acres
- 03-19%; 14,350 Acres
- 01-2.9%; 21,839 Acres

▲ 07/14/2007 2351 IR Heat

KNF Trans 1995
Transportation

- Paved Road
- Dirt/Gravel Road
- Unimproved Dirt
- Trail

CA R5 FireHistory 06_1

- 1980-2006 Fires

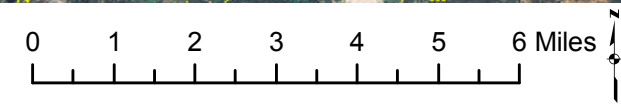
Ownership

- National Forest
- Non-National Forest

R5 FAM
Fire Behavior Branch, Predictive Services
McClellan, CA

with support from:
RRDST
Rapid Response
Decision Support Team

RMRS
Rocky Mtn. Research Station
Note: Projection based on preliminary data



1:150,000

Note: Transparency softens the FSPro colors