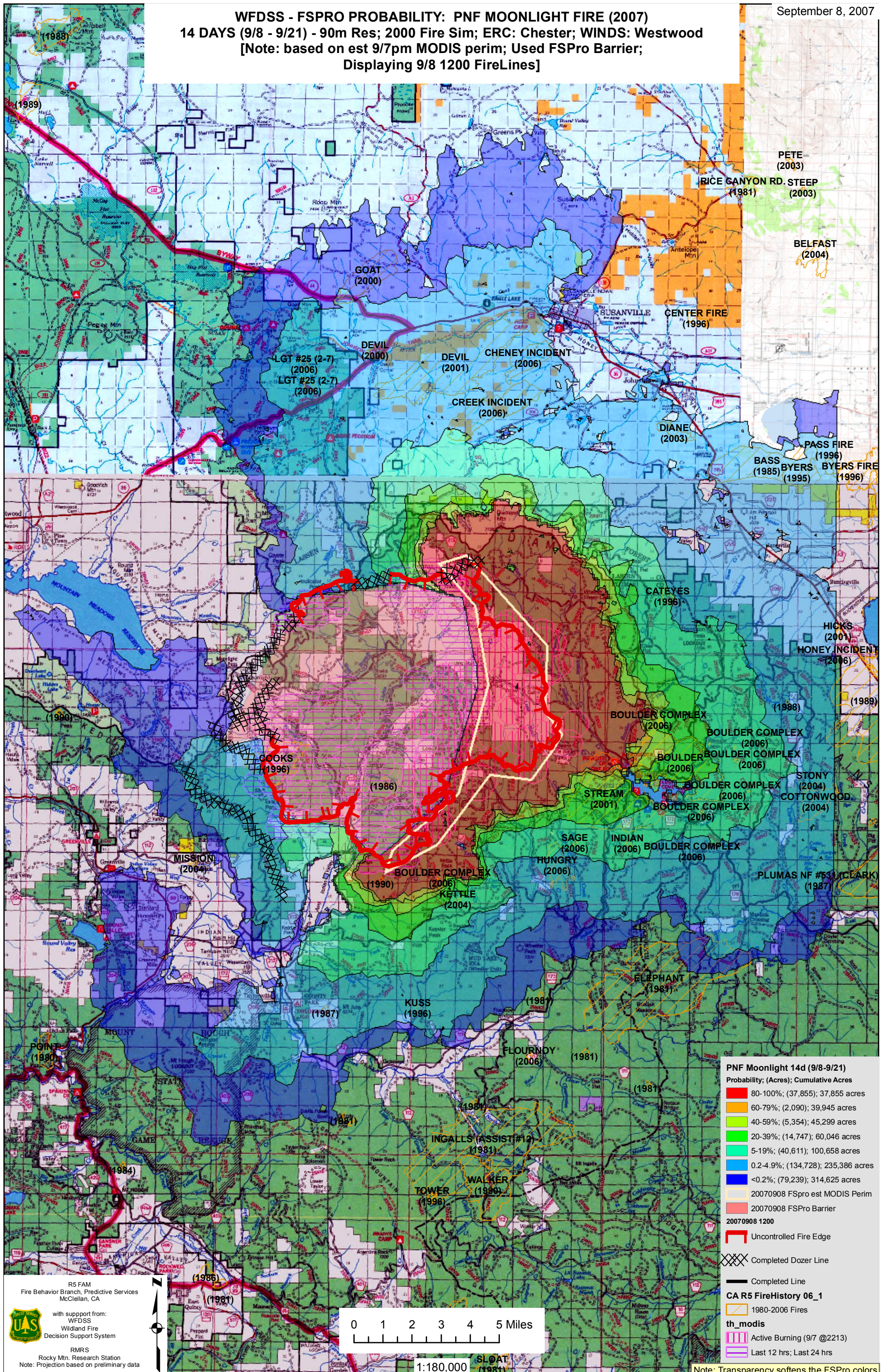


WFDSS - FSPRO PROBABILITY: PNF MOONLIGHT FIRE (2007)  
14 DAYS (9/8 - 9/21) - 90m Res; 2000 Fire Sim; ERC: Chester; WINDS: Westwood  
[Note: based on est 9/7pm MODIS perim; Used FSPro Barrier;  
Displaying 9/8 1200 FireLines]



**PNF Moonlight 14d (9/8-9/21)**  
Probability; (Acres); Cumulative Acres

- 80-100%; (37,855); 37,855 acres
- 60-79%; (2,090); 39,945 acres
- 40-59%; (5,354); 45,299 acres
- 20-39%; (14,747); 60,046 acres
- 5-19%; (40,611); 100,658 acres
- 0.2-4.9%; (134,728); 235,386 acres
- <0.2%; (79,239); 314,625 acres

20070908 FSPro est MODIS Perim  
20070908 FSPro Barrier

20070908 1200

- Uncontrolled Fire Edge
- Completed Dozer Line
- Completed Line

**CA R5 FireHistory 06\_1**

- 1980-2006 Fires

**th\_modis**

- Active Burning (9/7 @2213)
- Last 12 hrs; Last 24 hrs

R5 FAM  
Fire Behavior Branch, Predictive Services  
McClellan, CA

with support from:  
WFDSS  
Wildland Fire  
Decision Support System

RMRS  
Rocky Mtn. Research Station  
Note: Projection based on preliminary data



1:180,000

Note: Transparency softens the FSPro colors