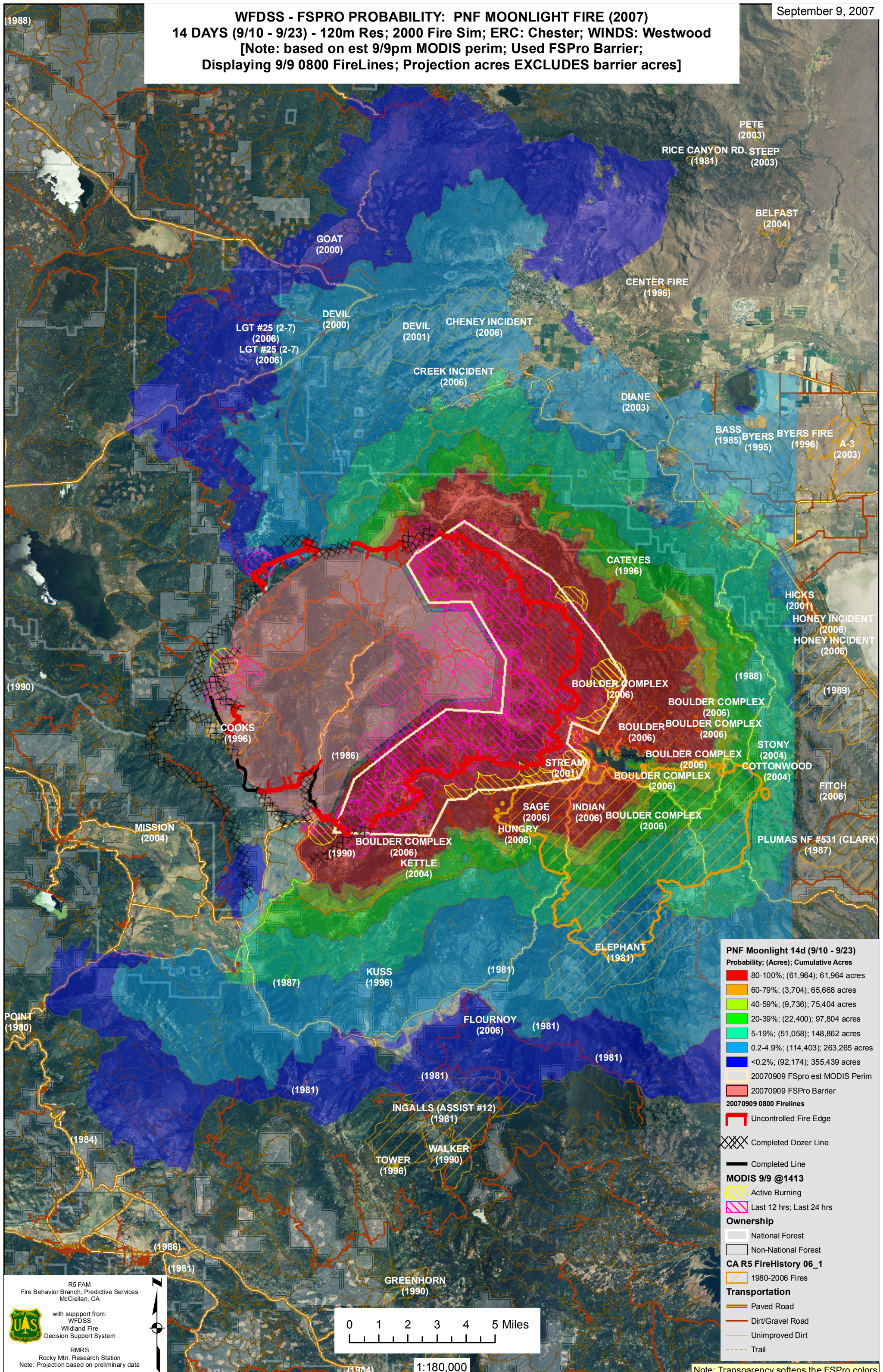


WFDSS - FSPRO PROBABILITY: PNF MOONLIGHT FIRE (2007)
14 DAYS (9/10 - 9/23) - 120m Res; 2000 Fire Sim; ERC: Chester; WINDS: Westwood
[Note: based on est 9/9pm MODIS perim; Used FSPro Barrier;
Displaying 9/9 0800 FireLines; Projection acres EXCLUDES barrier acres]



PNF Moonlight 14d (9/10 - 9/23)
Probability; (Acres); Cumulative Acres

- 80-100%; (61,964); 61,964 acres
- 60-79%; (3,704); 65,668 acres
- 40-59%; (9,736); 75,404 acres
- 20-39%; (22,400); 97,804 acres
- 5-19%; (51,058); 148,862 acres
- 0.2-4.9%; (114,403); 263,265 acres
- <0.2%; (92,174); 355,439 acres

- 20070909 FSpro est MODIS Perim
- 20070909 FSPro Barrier
- 20070909 0800 FireLines
- Uncontrolled Fire Edge
- Completed Dozer Line
- Completed Line

MODIS 9/9 @1413

- Active Burning
- Last 12 hrs; Last 24 hrs

Ownership

- National Forest
- Non-National Forest

CA R5 FireHistory 06_1

- 1980-2006 Fires

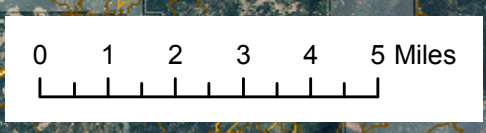
Transportation

- Paved Road
- Dirt/Gravel Road
- Unimproved Dirt
- Trail

R5 FAM
Fire Behavior Branch, Predictive Services
McClellan, CA

with support from:
WFDSS
Wildland Fire
Decision Support System

RMRS
Rocky Mtn. Research Station
Note: Projection based on preliminary data



1:180,000

Note: Transparency softens the FSPro colors