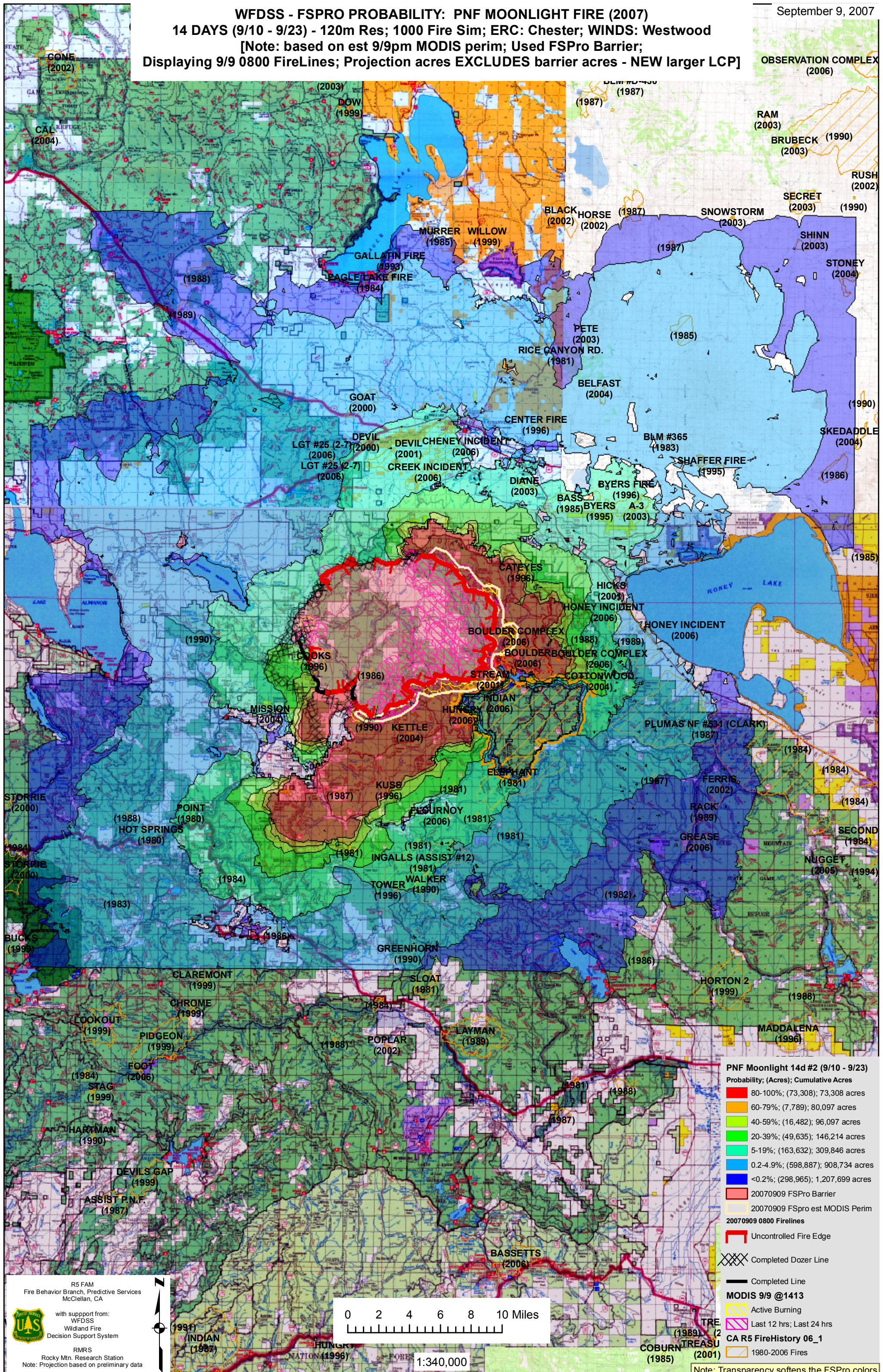


WFDSS - FSPRO PROBABILITY: PNF MOONLIGHT FIRE (2007)  
14 DAYS (9/10 - 9/23) - 120m Res; 1000 Fire Sim; ERC: Chester; WINDS: Westwood  
[Note: based on est 9/9pm MODIS perim; Used FSPro Barrier;  
Displaying 9/9 0800 FireLines; Projection acres EXCLUDES barrier acres - NEW larger LCP]



**PNF Moonlight 14d #2 (9/10 - 9/23)**  
Probability; (Acres); Cumulative Acres

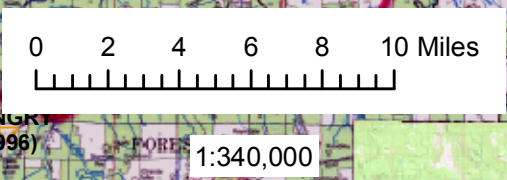
- 80-100%; (73,308); 73,308 acres
- 60-79%; (7,789); 80,097 acres
- 40-59%; (16,482); 96,097 acres
- 20-39%; (49,635); 146,214 acres
- 5-19%; (163,632); 309,846 acres
- 0.2-4.9%; (598,887); 908,734 acres
- <0.2%; (298,965); 1,207,699 acres

20070909 FSPro Barrier  
20070909 FSPro est MODIS Perim  
20070909 0800 FireLines  
Uncontrolled Fire Edge  
Completed Dozer Line  
Completed Line  
MODIS 9/9 @1413  
Active Burning  
Last 12 hrs; Last 24 hrs  
CA R5 FireHistory 06\_1  
1980-2006 Fires

R5 FAM  
Fire Behavior Branch, Predictive Services  
McClellan, CA

with support from:  
WFDSS  
Wildland Fire  
Decision Support System

RMRS  
Rocky Mtn. Research Station  
Note: Projection based on preliminary data



Note: Transparency softens the FSPro colors