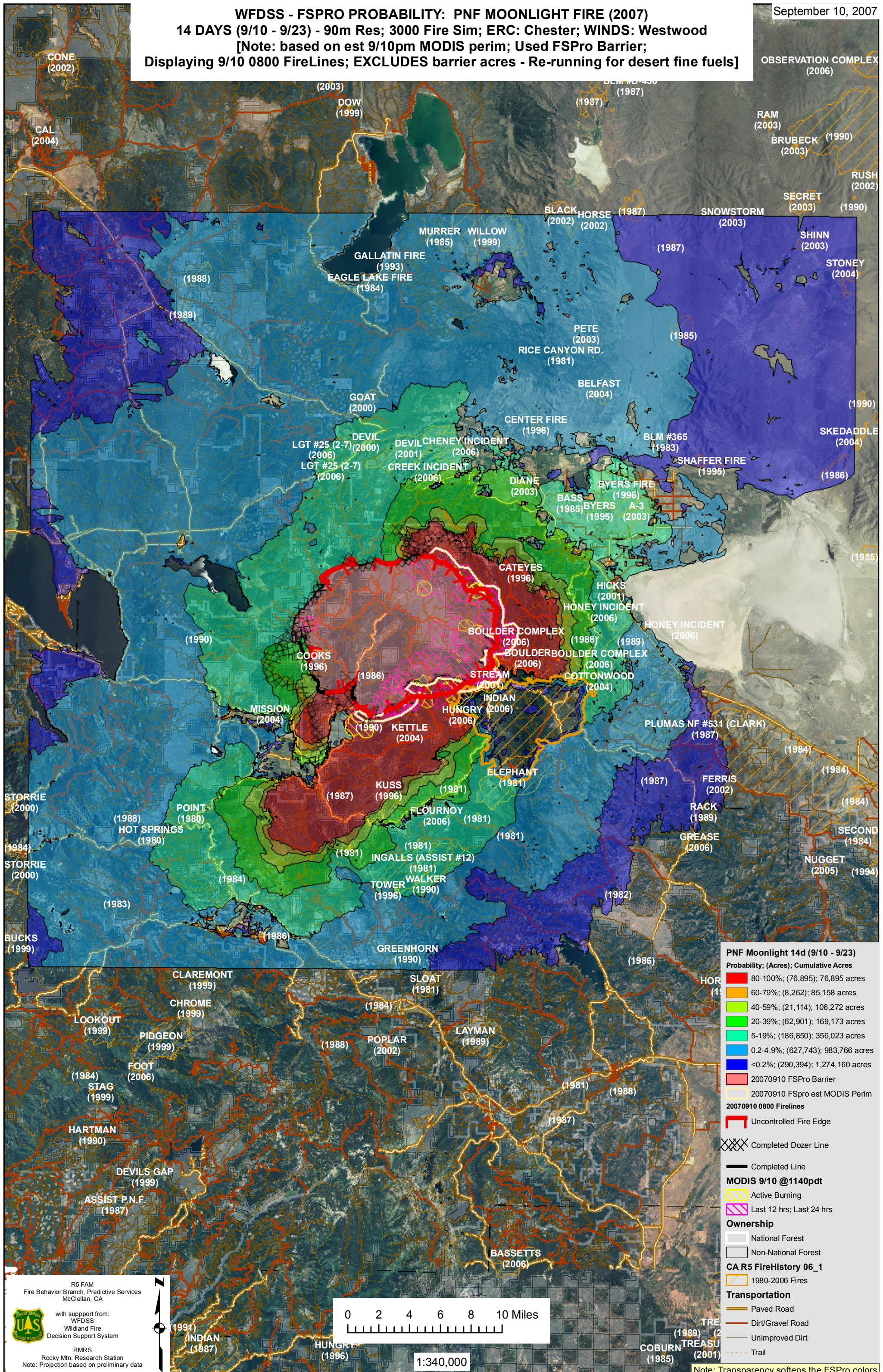


WFDSS - FSPRO PROBABILITY: PNF MOONLIGHT FIRE (2007)
14 DAYS (9/10 - 9/23) - 90m Res; 3000 Fire Sim; ERC: Chester; WINDS: Westwood
 [Note: based on est 9/10pm MODIS perim; Used FSPro Barrier;
 Displaying 9/10 0800 FireLines; EXCLUDES barrier acres - Re-running for desert fine fuels]

September 10, 2007



PNF Moonlight 14d (9/10 - 9/23)
 Probability; (Acres); Cumulative Acres

- 80-100%; (76,895); 76,895 acres
- 60-79%; (8,262); 85,158 acres
- 40-59%; (21,114); 106,272 acres
- 20-39%; (62,901); 169,173 acres
- 5-19%; (186,850); 356,023 acres
- 0.2-4.9%; (627,743); 983,766 acres
- <0.2%; (290,394); 1,274,160 acres

20070910 FSPro Barrier
 20070910 FSpro est MODIS Perim
 20070910 0800 Firelines

- Uncontrolled Fire Edge
- Completed Dozer Line
- Completed Line

MODIS 9/10 @1140pdt

- Active Burning
- Last 12 hrs; Last 24 hrs

Ownership

- National Forest
- Non-National Forest

CA R5 FireHistory 06_1

- 1980-2006 Fires

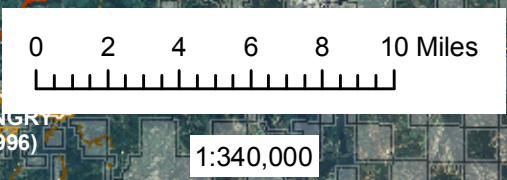
Transportation

- Paved Road
- Dirt/Gravel Road
- Unimproved Dirt
- Trail

R5 FAM
 Fire Behavior Branch, Predictive Services
 McClellan, CA

with support from:
 WFDSS
 Wildland Fire
 Decision Support System

RMRS
 Rocky Mtn. Research Station
 Note: Projection based on preliminary data



Note: Transparency softens the FSPro colors