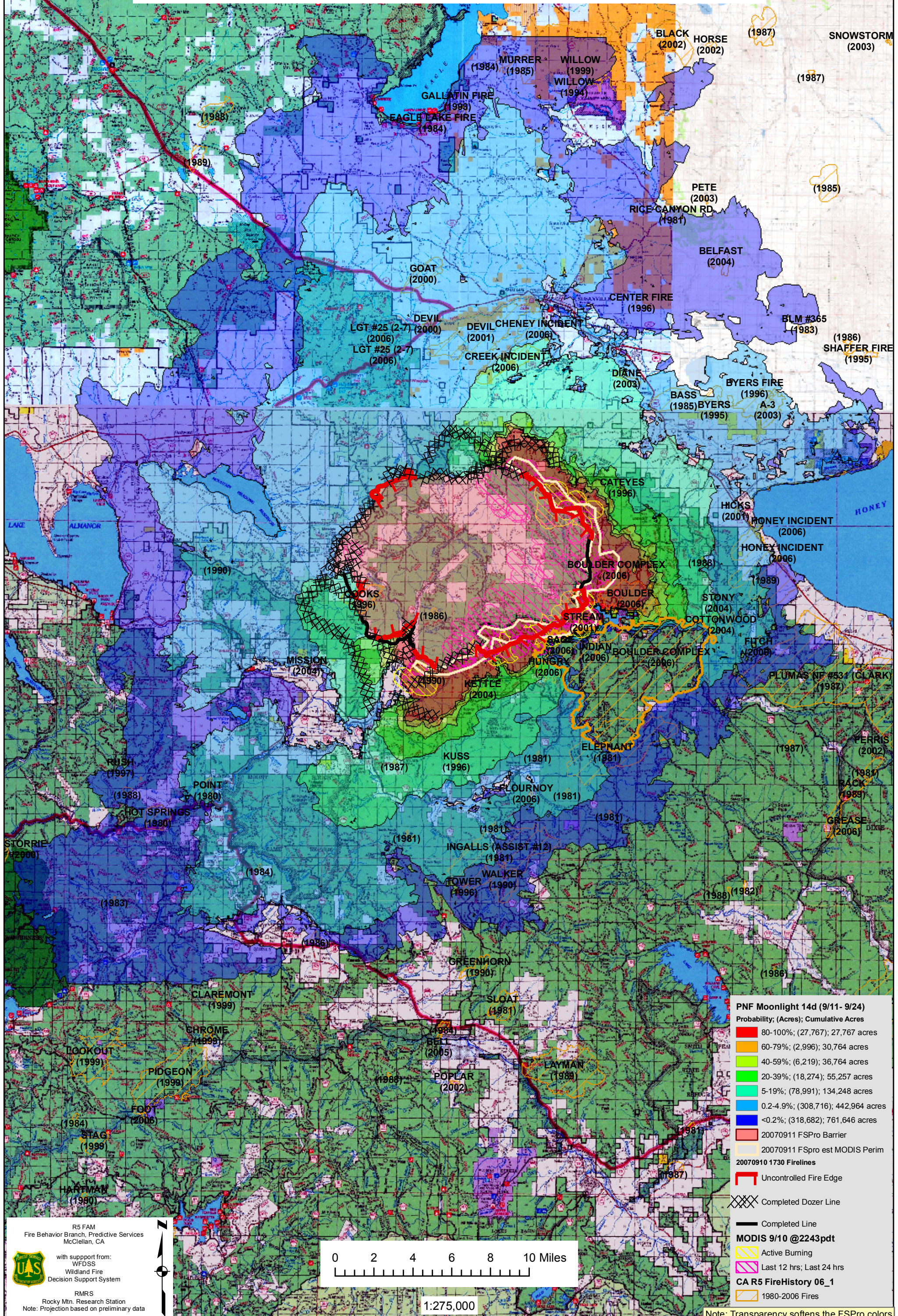
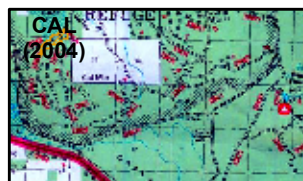


WFDSS - FSPRO PROBABILITY: PNF MOONLIGHT FIRE (2007)
14 DAYS (9/11 - 9/24) - 90m Res; 3000 Fire Sim; ERC: LAUFMAN; WINDS: Westwood
[Note: based on est 9/10pm MODIS perim; Used FSPro Barrier;
Displaying 9/10 1730 FireLines; EXCLUDES barrier acres - ADJUSTED desert fine fuels]



PNF Moonlight 14d (9/11- 9/24)
Probability; (Acres); Cumulative Acres

- 80-100%; (27,767); 27,767 acres
- 60-79%; (2,996); 30,764 acres
- 40-59%; (6,219); 36,764 acres
- 20-39%; (18,274); 55,257 acres
- 5-19%; (78,991); 134,248 acres
- 0.2-4.9%; (308,716); 442,964 acres
- <0.2%; (318,682); 761,646 acres

20070911 FSPro Barrier
20070910 FSPro est MODIS Perim
20070910 1730 Firelines

- Uncontrolled Fire Edge
- Completed Dozer Line
- Completed Line

MODIS 9/10 @2243pdt

- Active Burning
- Last 12 hrs; Last 24 hrs

CA R5 FireHistory 06_1

- 1980-2006 Fires

R5 FAM
Fire Behavior Branch, Predictive Services
McClellan, CA

with support from:
WFDSS
Wildland Fire
Decision Support System

RMRS
Rocky Mtn. Research Station
Note: Projection based on preliminary data



1:275,000

Note: Transparency softens the FSPro colors