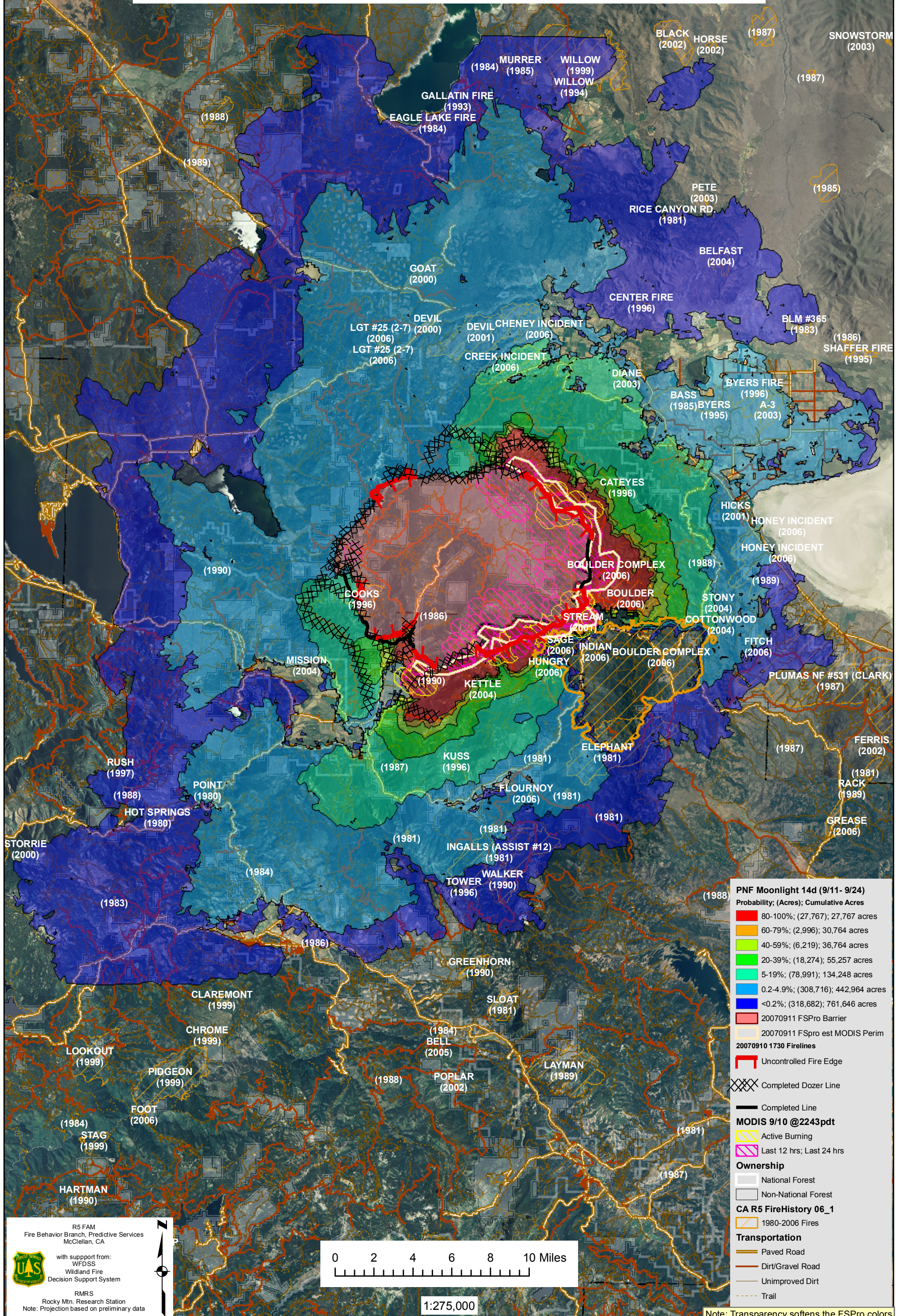


CAL (2004)

**WFDSS - FSPRO PROBABILITY: PNF MOONLIGHT FIRE (2007)**  
**14 DAYS (9/11 - 9/24) - 90m Res; 3000 Fire Sim; ERC: LAUFMAN; WINDS: Westwood**  
 [Note: based on est 9/10pm MODIS perim; Used FSPro Barrier;  
 Displaying 9/10 1730 FireLines; EXCLUDES barrier acres - ADJUSTED desert fine fuels]

September 11, 2007



**PNF Moonlight 14d (9/11- 9/24)**

Probability; (Acres); Cumulative Acres

- 80-100%; (27,767); 27,767 acres
- 60-79%; (2,996); 30,764 acres
- 40-59%; (6,219); 36,764 acres
- 20-39%; (18,274); 55,257 acres
- 5-19%; (78,991); 134,248 acres
- 0.2-4.9%; (308,716); 442,964 acres
- <0.2%; (318,682); 761,646 acres

20070911 FSPro Barrier

20070910 FSpro est MODIS Perim

20070910 1730 FireLines

Uncontrolled Fire Edge

Completed Dozer Line

Completed Line

**MODIS 9/10 @2243pdt**

- Active Burning
- Last 12 hrs; Last 24 hrs

**Ownership**

- National Forest
- Non-National Forest

**CA R5 FireHistory 06\_1**

- 1980-2006 Fires

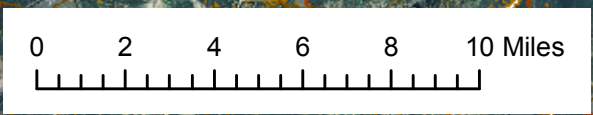
**Transportation**

- Paved Road
- Dirt/Gravel Road
- Unimproved Dirt
- Trail

R5 FAM  
 Fire Behavior Branch, Predictive Services  
 McClellan, CA

with support from:  
 WFDSS  
 Wildland Fire  
 Decision Support System

RMRS  
 Rocky Mtn. Research Station  
 Note: Projection based on preliminary data



1:275,000

Note: Transparency softens the FSPro colors