

# **Incident Action Plan**

## **Wallow Fire**

**CA-SHF-001882**

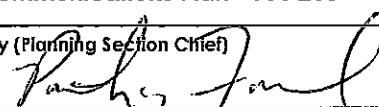
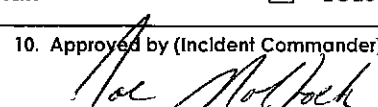
**P5DYU1**



**DAY SHIFT**

**Tuesday, September 4, 2007**

**0600-1800**

<b>INCIDENT OBJECTIVES</b>	1. Incident Name <b>WALLOW</b>	2. Date <b>SEPTEMBER 3, 2007</b>	3. Time <b>2000</b>
4. Operational Period <ul style="list-style-type: none"> <li>SEPTEMBER 4, 2007 0600-1800</li> </ul>			
5. General Control Objectives for the Incident (Include alternatives) <b>MANAGEMENT OBJECTIVES</b> <ul style="list-style-type: none"> <li>The primary objective is to provide for firefighter and public safety throughout all incident operations.</li> <li>Without compromising safety, minimize suppression impacts to private property, riparian areas, South Fork Trinity River, and Late Successional Reserves (LSR).</li> <li>Adhere to the 2:1 work rest cycle.</li> <li>Address suppression cost accountability by keeping fire expenditures commensurate with public and private values at risk.</li> <li>Maintain clear and prompt information exchange with Forest, local communities and cooperators.</li> <li>Provide Initial Attack support when requested by Shasta-Trinity National Forests.</li> <li>Consult with the local unit when implementing the Incident Fire Suppression Rehabilitation Plan.</li> </ul> <b>OPERATIONAL OBJECTIVES</b> <ul style="list-style-type: none"> <li>Keep fire within current containment lines.</li> <li>Complete Fire Suppression Rehabilitation.</li> </ul>			
6. Weather Forecast for Period <b>See Spot Weather Forecast</b>			
7. General Safety Message <b>Stay alert to changing weather conditions and its potential to affect fire behavior. Drink plenty of fluids and use extra caution while traversing steep slopes. Some access roads are dusty and can be very hazardous. Watch out for oncoming traffic and livestock. Always maintain a safe driving speed. Review <u>Yellow Jacket Safety Briefing</u> attached to IAP.</b>			
8. <b>Attachments (mark if attached)</b>			
<input checked="" type="checkbox"/> Organization List - ICS 203 <input checked="" type="checkbox"/> Div. Assignment Lists - ICS 204 <input checked="" type="checkbox"/> Communications Plan - ICS 205	<input checked="" type="checkbox"/> Medical Plan - ICS 206 <input type="checkbox"/> Incident Map <input type="checkbox"/> Traffic Plan	<input checked="" type="checkbox"/> Weather <input checked="" type="checkbox"/> Safety Message <input type="checkbox"/> LCES Worksheet	
9. Prepared by (Planning Section Chief) 	10. Approved by (Incident Commander) 		

ORGANIZATION ASSIGNMENT LIST			9. Operations Section	
1. Incident Name		Day Ops Chief Steve Raymer		
Wallow Fire		Night Ops Chief Mike Beckett		
2. Date	3. Time	Planning Ops Frank Davis (T)		
09/03/07	1800	a. Branch I - Division/Groups		
4. Operational Period		Division/Group A/G Mike Sandoval/ Kyle Johnson(T)/ Terry Walker(T)		
09/04/2007 Day Shift 0600-1800				
Position	Name			
5. Incident Commander and Staff		Division/Group O Steve Davis/ Riva Duncan(T)		
Incident Commander	Bill Kaage			
Deputy	Joe Molhoek/Tim Fike (T)	Division/Group Z Mike Cherry/ David Ray (T)		
Safety Officer	Terry O'Connell, Aaron Lowe(T)			
Information Officer	Cathleen Thompson/ Jennifer Chapman(T)	Division/Group		
Liaison Officer		b. Branch II - Division/Groups		
6. Agency Representative		Branch Director		
Agency	Name	Deputy		
CALFIRE Agency Rep	Kelly Dreesmann	Division/Group		
Line Officer Rep	Donna Harmon	Division/Group		
Resource Advisor	Mark Arnold, Mark Goldsmith	Division/Group		
Trinity County OES Coord.	Richard Smith	Division/Group		
IARR	Danny Gomez	c. Branch III - Division/Groups		
7. Planning Section		Branch Director		
Chief	Pat Farrell	Deputy		
Deputy		Division/Group		
Resources Unit	Dean Lutz/ Barb Frazier(T)	Division/Group		
Situation Unit	Phyllis Banducci	Division/Group		
Documentation Unit	Gail Tozier	Division/Group		
Demobilization Unit	Dean Lutz	d. Air Operations Branch		
Fire Behavior Analyst	Gene Rogers	Air Operations Branch Director Walter Bunt		
Incident Meteorologist		Air Attack Supervisor		
Human Resources		Air Support Group Supervisor		
Training Specialist	Brad Smith	10. Finance Section		
GISS	Kim Vieira/ David Benitez (T)	Chief Beth Lopez		
8. Logistics Section		Deputy		
Chief	Jack Costello	Time Unit Penny Portlock		
Deputy	Jack Knight	Equipment Time Unit Juanita Cortez		
Supply Unit	Tracey Valentine(T)	Compensation/Claims Unit		
Facilities Unit	Hank Hennessy, Kevin Browning(T)	Cost Unit Rich Andersen		
Ground Support Unit	Mike Heckendorn, Greg Connick(T)	Prepared by (Resource Unit Leader)  <i>Barbara Frazier</i>		
Communications Unit	Don Stoner			
Medical Unit	Karen Brose			
Security Unit				
Food Unit	Dawn Pedersen			

## Spot Forecast for Wallow Fire

National Weather Service Eureka

633 PM PDT Mon Sep 3 2007

IF CONDITIONS BECOME UNREPRESENTATIVE,  
CONTACT THE NATIONAL WEATHER SERVICE.

SPOT FORECAST FOR WALLOW...USFS  
NATIONAL WEATHER SERVICE EUREKA CA  
633 PM PDT MON SEP 3 2007

FORECAST IS BASED ON REQUEST TIME OF 1813 PDT ON SEPTEMBER 03.  
IF CONDITIONS BECOME UNREPRESENTATIVE...CONTACT THE NATIONAL WEATHER  
SERVICE IN EUREKA AT (707) 443-6484.

.DISCUSSION...

A COLD FRONT WILL PASS OVER THE FIRE DURING THE MORNING HOURS  
TUESDAY...RESULTING IN BETTER HUMIDITY RECOVERY OVERNIGHT AND  
INCREASING  
CLOUDS. COOLER WEATHER WITH HIGHER HUMIDITY CAN BE EXPECTED INTO  
TUESDAY...BUT OFFSHORE FLOW WILL DEVELOP TUESDAY NIGHT...WITH BREEZY  
NORTHEAST WINDS OVER THE RIDGES ACCOMPANIED BY POOR OVERNIGHT  
HUMIDITY  
RECOVERY. A WARMER DAY IS IN STORE FOR WEDNESDAY...WITH LOW  
AFTERNOON  
HUMIDITY.

.TONIGHT...

SKY/WEATHER.....INCREASING CLOUDS.  
MIN TEMPERATURE.....56-59.  
MAX HUMIDITY.....65-70 PERCENT.  
EYE LEVEL WINDS.....DOWNSLOPE 1 TO 3 MPH.  
SURROUNDING RIDGE...  
WIND (20 FT).....WEST WINDS 3 TO 6 MPH.

.TUESDAY...

SKY/WEATHER.....PARTLY CLOUDY.  
MAX TEMPERATURE.....78-82.  
MIN HUMIDITY.....25-30 PERCENT.  
EYE LEVEL WINDS.....VARIABLE 1 TO 3 MPH BECOMING NORTHWEST  
4 TO 7 MPH BY 1200 PDT.  
SURROUNDING RIDGE...  
WIND (20 FT).....NORTHWEST WINDS 5 TO 10 MPH.

FIRE BEHAVIOR FORECAST NO. 9

NAME OF FIRE: WALLOW  
LOCATION: SHASTA-TRINITY NF  
TIME AND DATE  
FORECAST ISSUED 18:30 9/3/07

PREDICTION FOR: DAY SHIFT  
SHIFT DATE: 9/4/07  
PREPARED BY: Gene Rogers  
GENE ROGERS, FIRE BEHAVIOR ANALYST

---

**WEATHER SUMMARY:**

See attached Spot Weather Forecast from Eureka Fire Weather Office

**FIRE BEHAVIOR**

**GENERAL:**

Fire behavior has been diminished to smoldering, creeping and isolated interior burning. A night of better overnight humidity recovery will mean that fire activity will be less active at the beginning of the shift than the last few mornings.

**SPECIFIC:**

Div A,G,O and Z: More active smoking from smoldering stumps and logs will occur, particularly with afternoon winds.

Although spotting is less likely today, the Probability of Ignition will be 50-70% depending on shading. This is still good enough to facilitate a new ignition if brands are lofted.

This shift will be the last one before the next weather change that will increase fire behavior potential. Dry and gusty Northwest winds will arrive Wednesday and Thursday. These winds will test Divisions A, O and Z.

**AIR OPERATIONS:**

Good flying conditions.

**SAFETY:**

Many snags are in the fire area; watch for embers, falling limbs and chunks. Interior trees and snags have been weakened and will be falling. Burned out stumps and logs will create walking hazards; avoid crossing large areas of white ash.

<b>DIVISION ASSIGNMENT LIST</b>			1. Branch		2. Division/Group <b>A/G</b>		
3. Incident Name <b>WALLOW</b>			4. Operational Period <b>DAY OPERATIONS</b> Date: 09/04/2007 Time: 0600-1800				
5. Operations Personnel							
Operations Chief		Steve Raymer		Division/Group Supervisor		Mike Sandoval/Kyle Johnson(T)/ Terry Walker(T)	
Branch Director				Air Attack Supervisor			
6. Resources Assigned this Period							
Strike Team/Task Force/ Resource Designator	Leader	Last Shift	Number Persons	Trans. Needed	Drop Off PT./Time	Pick Up PT./Time	
DIVS (O-22)	Bert Plante	9/15	1	N	DP1/0700	TBD by DIVS	
DIVS (O-21)	Lucas Santio	9/13	1	N	DP1/0700	TBD by DIVS	
HC2 Shasta Crew 21 (C-33)	Shawn Fry	9/14	20	N	DP1/0700	TBD by DIVS	
ENG3 ST 6632C (E-51)	Michael Tucker	9/14	24	N	DP1/0700	TBD by DIVS	
DZ CA-SHF Dozer 29 (E-120)	Dave Brown	9/16	2	N	DP1/0700	TBD by DIVS	
WT Hoaglen Trucking (E-10)	Jack Hoaglen	9/11	1	N	DP1/0700	TBD by DIVS	
WT M & K WT (E-13)	Marsha Maraviov	9/11	1	N	DP1/0700	TBD by DIVS	
TFLD (O-13)	Kurt Thompson	9/14	1	N	DP1/0700	TBD by DIVS	
EXCA North State Excavator (E-117)	Jim Jones	9/16	2	N	DP1/0700	TBD by DIVS	
FEMT (O-33)	Josh Raczka	9/15	1	N	DP1/0700	TBD by DIVS	
7. Control Operations							
<ul style="list-style-type: none"> <li>Mop-up targets of opportunity to 500 feet.</li> <li>Continue rehab.</li> </ul>							
8. Special Instructions							
<ul style="list-style-type: none"> <li>Ensure apparatus undergo weed-washing at Base Camp before demobilization from the incident.</li> </ul>							
9. Division/Group Communication Summary							
Function	Frequency	System	Channel	Function	Frequency	System	Channel
Command	Rx 162.9625 Tx 171.7875	KING	8				
Tactical Div/Group	Rx 166.7250 Tx 166.7250	KING	1	IA-Air to Ground	Rx 170.0000 Tx 170.0000	KING	12
Prepared by (Resource Unit Leader)		Approved by (Planning Section Chief)		Date		Time	
<i>Barb Fry</i>		<i>Paul J. Ford</i>		09/03/2007		1600	

<b>DIVISION ASSIGNMENT LIST</b>				1. Branch		2. Division/Group <b>0</b>	
3. Incident Name <b>WALLOW</b>				4. Operational Period <b>DAY OPERATIONS</b> Date: 09/04/2007      Time: 0600-1800			
5. Operations Personnel							
Operations Chief		Steve Raymer		Division/Group Supervisor		Steve Davis/Riva Duncan (T)	
Branch Director				Air Attack Supervisor			
6. Resources Assigned this Period							
Strike Team/Task Force/ Resource Designator	Leader	Last Shift	Number Persons	Trans. Needed	Drop Off PT./Time	Pick Up PT./Time	
HC2 NM-SPA 1 (C-38)	Delbert Benally	9/14	20	N	DP7/0700	TBD by DIVS	
HC2 Navajo Scouts 15 (C-37)	Terry Tso	9/14	20	N	DP7/0700	TBD by DIVS	
HC2 Navajo Scouts (C-10)	Howard Kenny	9/14	20	N	DP7/0700	TBD by DIVS	
ENG3 CA-MNF 32 (E-77)	Richard Milton	9/15	5	N	DP7/0700	TBD by DIVS	
ENG3 CA-SHF 32 (E-115)	Warren Swab	9/11	5	N	DP7/0700	TBD by DIVS	
ENG6 CA-TNF 42 (E-21)	Mike Durocher	9/13	5	N	DP7/0700	TBD by DIVS	
WT CA-SHF 35 (E-5)		9/11	1	N	DP7/0700	TBD by DIVS	
WT Stuart WT (E-29)	Mark Stuart	9/11	1	N	DP7/0700	TBD by DIVS	
7. Control Operations							
<ul style="list-style-type: none"> <li>Mop-up targets of opportunity to 500 feet.</li> <li>Continue rehab.</li> </ul>							
8. Special Instructions							
<ul style="list-style-type: none"> <li>Ensure apparatus undergo weed-washing at Base Camp before demobilization from the incident.</li> </ul>							
9. Division/Group Communication Summary							
Function	Frequency	System	Channel	Function	Frequency	System	Channel
Command	Rx 162.9625 Tx 171.7875	KING	8				
Tactical Div/Group	Rx 166.7750 Tx 166.7750	KING	2	IA Air to Ground	Rx 170.0000 Tx 170.0000	KING	12
Prepared by (Resource Unit Leader) <i>Bob Gray</i>		Approved by (Planning Section Chief) <i>Paul Taylor</i>		Date 9/03/2007		Time 1600	

<b>DIVISION ASSIGNMENT LIST</b>			1. Branch		2. Division/Group <b>Z</b>		
3. Incident Name <b>WALLOW</b>			4. Operational Period <b>DAY OPERATIONS</b> Date: 09/04/2007 Time: 0600-1800				
5. Operations Personnel							
Operations Chief		Steve Raymer		Division/Group Supervisor		Mike Cherry/David Ray(T)	
Branch Director				Air Attack Supervisor			
6. Resources Assigned this Period							
Strike Team/Task Force/ Resource Designator	Leader	Last Shift	Number Persons	Trans. Needed	Drop Off PT./Time	Pick Up PT./Time	
HC2IA Ukonom (C-3)	John Cataldo	9/11	19	N	DP6/0700	TBD by DIVS	
ENG3 CA-SHF 11 (E-112)	Bob Toney	9/11	4	N	DP6/0700	TBD by DIVS	
ENG3 AZ-TNF 38 (E-74)	Nathaniel Nozie	9/14	6	N	DP6/0700	TBD by DIVS	
WT Rochlitz (E-30)	Steve Jones	9/11	1	N	DP6/0700	TBD by DIVS	
WT Rochlitz (E-31)	Ron Rochlitz	9/11	1	N	DP6/0700	TBD by DIVS	
7. Control Operations							
<ul style="list-style-type: none"> <li>Mop-up targets of opportunity to 500 feet.</li> <li>Continue rehab.</li> </ul>							
8. Special Instructions							
<ul style="list-style-type: none"> <li>Ensure apparatus undergo weed-washing at Base Camp before demobilization from the incident.</li> </ul>							
9. Division/Group Communication Summary							
Function	Frequency	System	Channel	Function	Frequency	System	Channel
Command	Rx 162.9625 Tx 171.7875	KING	8				
Tactical Div/Group	Rx 168.2500 Tx 168.2500	KING	3	IA Air to Ground	Rx 170.0000 Tx 170.0000	KING	12
Prepared by (Resource Unit Leader)		Approved by (Planning Section Chief)			Date		Time
<i>Barb May</i>		<i>Paul J. ...</i>			9/03/2007		1800



**AIR OPERATIONS SUMMARY**      PREPARED BY: Walter Bunt    AOB D NorCal II      PREPARED DATE/TIME: 9/03/2007 2000

1. INCIDENT NAME: **WALLOW**      2. OPERATIONAL PERIOD DATE: 09/04/07    START TIME: 0800    END TIME: 2000    SUNRISE: 06:34    SUNSET: 19:35

3. REMARKS		4. MEDEVAC A/C:		5. TFR:	
• NO TFR over the incident.		See Medical Plan		NO TFR OVER FIRE!!!	
6. PERSONNEL	Phone	7. FREQUENCIES	AM	FM	8. FIXED-WING
AOBD: Walter Bunt	(530)598-0594 (530)628-4276	AIR/AIR	128.250	169.150	Rohnerville, Redding
ASGS:		AIR/AIR ROTOR			Order By AOB D Through Redding ECC
Weaverville Helibase	(530)604-8643	AIR/GROUND:		170.000	Order By AOB D Through Redding ECC
Redding Dispatch	(530)226-2400	COMMAND RPT:	TX: 171.7875 RX: 162.9625 Narrow Band No Tone		Order by AOB D through Redding ECC
Rohnerville AB	(707)725-4572	DECK			
Redding Air Attack Base	(530)226-2795	TOLC FREQ:	122.800 (Unicom) Hayfork		
ICP Fax	(530)628-5737				Other

9. HELICOPTERS

CALL SIGN	TY	MAKE/MODEL	BASE	AVAIL	START	REMARKS
7CP	3	Bell 206 L III	Hayfork AP	0900	0800	BEAR recon with 2 passengers fly out of Hayfork AP. When mission is completed aircraft will be released and re-assigned within North Ops.  **** Aircraft will not be on location all day

10. TASK/MISSION/ASSIGNMENT

If aviation resources are required, Division supervisors need to order through Air Operations with the following information:  
 Location aircraft needed  
 Ground contact  
 Number and type of aircraft needed

AFTER ORDER IS PLACED EXPECT A 30 MINUTE RESPONSE TIME.



**SAFETY MESSAGE**

**Wallow**

**Day 9-4-2007**

**Can you as a fire fighter answer yes to each of the questions before engaging in fire suppression activities??**

**\*\* Did you receive a briefing for the division to which you are being assigned?**

**\*\* Do you know the fire weather and fire behavior forecast for today?**

**\*\* Do you clearly understand the tasks that have been assigned to you?**

**\*\* Do you fully understand all portions of the Incident Action Plan?**

**\*\* Are you familiar with the:**

**10 Standard Fire Orders?**

**18 Situations That Shout Watch Out?**

**The Common Denominators of Tragedy Fires?**

**\*\* Will you have the Lookouts, Communications, Escape Routes, and Safety Zones clearly identified, marked, and well communicated?**

**\*\* Do you know it is OK to ask questions and ensure that the instructions you are given provide for your safety and the safety of your fellow firefighters?**

**\*\* Are you prepared to engage and monitor the fire environment, and be pro-active, flexible and make adjustments as needed?**

**LOOKOUTS - COMMUNICATIONS - ESCAPE ROUTES - SAFETY ZONES**

**Terry OConnell, Aaron Lowe (T) Safety Officers**

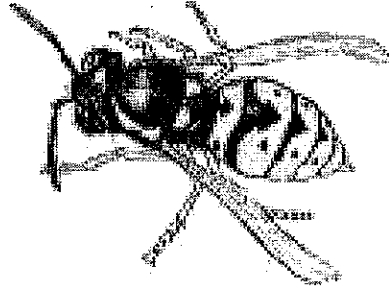
# INCIDENT RISK ANALYSIS

## Wallow Day Shift (ICS 215A)

DIV	HAZARDOUS ACTIONS / CONDITIONS	MITIGATIONS / WARNINGS / REMEDIES	
ALL	DRIVING HAZARDS	<ul style="list-style-type: none"> <li>DO NOT CUT THE CORNERS while driving on the roads.</li> <li>Drive defensively!</li> <li>Drive with headlights on; use chock blocks, keep windshields clean and look before backing; use backers whenever available.</li> <li>Keep speeds to 25 mph through Hayfork.</li> <li>Maintain Situational Awareness.</li> </ul>	
ALL	FATIGUE	<ul style="list-style-type: none"> <li>Be alert for signs of fatigue and take breaks as necessary. Monitor for cumulative effects. Maintain 2:1 work/rest ratio.</li> </ul>	
ALL	COMPLACENCY	<ul style="list-style-type: none"> <li>Make sure all personnel receive thorough briefings every shift.</li> <li>Ensure proper PPE are being utilized during all operations.</li> <li>Situational Awareness must be maintained for the duration of the operational period and incident.</li> </ul>	
ALL	FIRE BEHAVIOR	<ul style="list-style-type: none"> <li>Watch for Local winds starting mid-afternoon.</li> <li>Monitor current weather conditions and forecasts.</li> <li>Maintain adequate escape routes and safety zones. Advise all personnel if these are compromised or changed. Set trigger points when appropriate.</li> <li>Adhere to 10 Std Orders, mitigate 18 situations. Maintain Situational Awareness.</li> </ul>	
ALL	YELLOW JACKETS	<ul style="list-style-type: none"> <li>Be cautious of where vehicles are parked.</li> <li>Identify nests within the ground of the work area during mop up.</li> <li>Identify anyone who is allergic to stings or could be allergic.</li> </ul>	
ALL	DOZERS / EXCAVORR	<ul style="list-style-type: none"> <li>Brief all resources working around heavy equipment.</li> </ul>	
ALL	SNAGS/HAZARDOUS TREES	<ul style="list-style-type: none"> <li>Identify and mitigate hazards prior to beginning work. Pay attention to your surroundings.</li> </ul>	
INCIDENT NAME:  <b style="font-size: 1.2em;">Wallow</b>  ICS 215a		DATE PREPARED:  <b style="font-size: 1.1em;">September 3, 2007</b>	OPERATIONAL PERIOD  <b style="font-size: 1.2em;">09/4/2007</b>  <b style="font-size: 1.2em;">Day</b>  Prepared by, T OConnell, A Lowe (T)
		TIME PREPARED <b style="font-size: 1.1em;">1500 hrs</b>	

# YELLOW JACKET SAFETY BRIEFING

A recent incident on the Shasta-Trinity NF and reports of Yellow Jacket abundance at this time of year, and perhaps especially this year warrant some information on the subject of safety related to Bee and Yellow Jackets and their stings. Dealing with attacks and stings of Yellow Jackets or bees may be similar, but the "Yellow Jacket wasp" or "meat bee" stings may be more numerous.



Yellow Jackets are considered beneficial around home gardens and commercially grown fruits and vegetables at certain times of the year because they feed abundantly on insect pests such as caterpillars and harmful flies. Unfortunately, in late summer and early fall when their populations peak, the Yellow Jacket's normal insect diet disappears and their feeding habits become a problem to man. At this time of year, the Yellow Jacket has an appetite for much the same food and drink as those consumed by man. Also, Yellow Jacket stings can result in a life-threatening situation, especially if the person is allergic to Yellow Jacket venom.

Nests are normally located in a soil cavity such as an abandoned mouse nest or hollow tree. Other possible nests sites are in buildings, including attics, porches, eaves or sheds. Disturbing ground nests or trees can cause swarming Yellow Jackets to attack.

## Fire Management Notes--

When attacked by honey bees or Yellow Jacket wasps -

1. If at all possible, run away from the nest as quickly as you can
2. If running away is impossible due to injury, fire conditions, or topography, then deploy a fire shelter to drastically reduce the number of stings. Get your head and neck under the shelter as quickly as possible, and try to lie flat, covering the rest of your body if possible.
3. Flatten down the edges of the shelter along the ground to prevent additional insects from entering.
4. If stung by honey bees, remove stings by rubbing your hands over exposed skin. Remove stings in clothing by rubbing or pulling on the cloth.
5. Use gloved hands to crush any insects inside the shelter.
6. After the bees or Yellow Jackets settle down (which will take several minutes to an hour, depending on the degree of their agitation), move away from the nest, using the shelter as protection from any remaining defenders.

As always, knowledge of how to respond correctly in an emergency is the best insurance of survival. In most circumstances, timely escape is best; but when escape is impossible, the fire shelter can provide significant protection from stings. The fire shelter now has a new, potentially life-saving application.

# YELLOW JACKET SAFETY BRIEFING

Allergic reactions to Yellow Jacket or bees stings may cause shock and life threatening conditions. Those with known allergies should carry sting treatment kits. Co-workers of multiple sting victims should watch the co-worker and be prepared for emergency medical responses and evacuation.

General guidelines are to leave the area, and covering the face with both hands to protect the sensitive body areas.

## **Safety Measures**

Precautions should be taken when working or playing in areas that are likely to be inhabited by Yellow Jackets. Logging equipment operators often disturb nests in the forest that can make their work very dangerous. A veil, hat and pressurized container of wasp or hornet spray are highly recommended during summer and fall.

If a colony is disturbed, a person should slowly walk away with both hands covering the face to protect the more sensitive body areas. It is best to walk toward dense vegetation or enter a vehicle or building to avoid the stinging insects. Swift movements will only attract more yellow jackets. Persons highly sensitive to yellow jacket venom should always carry a sting treatment kit during outdoor activities.

A Yellow Jacket does not leave a stinger in its victim, so there for it can sting multiple times. To reduce swelling following a stinging incident, a person may use several sting remedies. A convenient material to lace on the sting site is moistened table salt. Mound the dry salt on the sting entry point and moisten with a few drops of water. Leave the salt on the site for several minutes. This procedure must be applied within three to four minutes following the stinging incident to be effective.

Yellow Jackets and other stinging insects often get inside moving vehicles, which may result in a very dangerous situation. The driver should carefully stop the vehicle on the side of the road and all passengers should exit on the front passenger's side of the vehicle to avoid traffic. The driver should open all windows and leave the passenger doors open to allow the insects to exit the vehicle. Flying insects normally go immediately to the windows when inside a moving vehicle in an attempt to escape and are rarely in a defensive posture inside a moving vehicle unless provoked by an occupant. Persons should refrain from swatting the insect inside the vehicle.

Michael Cobbold  
Safety Officer  
Shasta-Trinity and Mendocino National Forests

MEDICAL PLAN	1. INCIDENT NAME <b>Wallow Fire</b>	2. DATE PREPARED 09/03/07	3. TIME PREPARED 2000	4. OPERATIONAL PERIOD 09/04/07 0600-1800 Day
--------------	--	------------------------------	--------------------------	---

5. INCIDENT MEDICAL AID STATIONS			
MEDICAL AID STATIONS	LOCATION	PARAMEDICS	
		YES	NO
Wallow Base Camp	Hayfork Fairgrounds	X	

6. TRANSPORTATION				
A. AIR AMBULANCE SERVICES				
NAME	ADDRESS	PHONE	PARAMEDICS	
			YES	NO
PHI Air Medical	3775 Flight, Redding CA	530-225-7250	X	
Reach	1100 Butte Street, Redding CA	800-338-4045	X	

B. AMBULANCES			
NAME	LOCATION	PARAMEDICS	
		YES	NO
Arcata Ambulance	ALL DIVISIONS	X	

7. HOSPITALS								
NAME	ADDRESS	TRAVEL TIME		PHONE	HELIPAD		BURN CENTER	
		AIR	GRND		Y	N	Y	N
Trinity Hospital	60 Easter Avenue, Weaverville CA	15min	60min	530-623-5541	X			X
Mercy Medical Center	2175 Rosaline Avenue, Redding CA	25min	120min	530-225-7201	X			X
Shasta Regional	1100 Butte Street, Redding CA	25min	120min	800-338-4045	X			X
UC Davis Burn Center	2315 Stockton, Sacramento CA	60min	----	916-734-5669	X		X	

8. MEDICAL EMERGENCY PROCEDURES	
<p><b>LINE EMERGENCY:</b> Crew Supervisor is to contact DIVS w/ patient complaint/condition and location.</p> <p><b>DIVS will run medical emergency on CMD RPT Channel 8</b> *** Clear Command Channel for Emergency Traffic</p> <p>1. DIVS will contact:</p> <ol style="list-style-type: none"> <li>Line EMT</li> <li>Wallow Communications</li> </ol> <p>2. Wallow Communications will contact:</p> <ol style="list-style-type: none"> <li>Basecamp Medical Unit</li> <li>Safety/IC</li> <li>Day Operations</li> </ol> <p><b>ICP EMERGENCY:</b> Contact Medical Unit with patient complaint/condition and location. Medical Staff will respond or patient delivered to Medical Unit.</p> <ul style="list-style-type: none"> <li>Communications contacts <ol style="list-style-type: none"> <li>Medical</li> <li>Safety/IC</li> <li>Operations</li> </ol> </li> </ul>	<p align="center"><b><u>INJURY REPORTING PROCEDURES</u></b></p> <p>PATIENT UNIT ID _____</p> <p>IS A EMT WITH PATIENT: YES ____ NO ____</p> <p>AGE _____</p> <p>SEX: MALE ____ FEMALE ____</p> <p>NATURE OF INJURY _____ #Pts _____</p> <p>+ LOC Y / N Level of Consciousness A &amp; O X _____</p> <p>LOCATION OF PATIENT _____</p> <p>SPECIAL RESCUE/EXTRICATION NEEDS _____</p> <p>TRANSPORTATION REQUESTED BY: AIR ____ GRD ____</p> <p>RONDEZVOUS _____</p> <p>POINT OF PICKUP _____</p> <p>LAT _____ LONG _____</p> <p>NOTES:</p> <p align="center">KEEP CALM</p>

ICS 206 8-78	9. PREPARED BY (MEDICAL UNIT LEADER) Karen Brose MEDL	10. REVIEWED BY (SAFETY OFFICER) Terry O'Connell/Aaron Lowe (T)
--------------	--	--

INCIDENT RADIO COMMUNICATIONS PLAN		1. Incident Name WALLOW FIRE		2. Date/Time Prepared 09/03/07 2000		3. Operational Period Date/Time 09/04/07 0600 - 1800	
Channel	Function	Frequency	Tone	Mode	Assignment	Remarks	
1	TAC 1	RX: 166.7250		N	DIV -A / G		
		TX: 166.7250					
2	TAC 2	RX: 166.7750		N	DIV -O		
		TX: 166.7750					
3	TAC 3	TX: 168.2500		N	DIV -Z		
		TX: 168.2500					
4	TAC 4	RX:		N			
		TX:					
5	TAC 5	RX:		N			
		TX:					
6	TAC 6	RX: 173.9875		N			
		TX: 173.9875					
7	SFMU NET	RX: 170.4875	Y	N	SFMU DISTRICT NET		
		TX: 170.4875					
8	CMD RPT	RX: 162.9625		N	CMD REPEATER		
		TX: 171.7875					
9	SERVICE NET	RX: 164.1250	Y	N	ALT CMD NET	TONE 4 T = TONE	
		TX: 164.8250					
10	REDDING	RX: 171.5750	Y	N	EMERGENCY USE ONLY	T 4 WEST, T 8 SOUTH, T 11 EAST	
		TX: 169.1000					
11	CREW NET	RX: 168.2000		N	I/A		
		TX: 168.2000					
12	I/A A/G	RX: 170.0000		N	I/A AIR TO GROUND		
		TX: 170.0000					
13		RX:		N			
		TX:					
14	AIR GUARD	RX: 168.6250		N	EMERGENCY USE ONLY		
		TX: 168.6250	110.9				
15		RX: 165.6000					
		TX: 165.6000					
16		RX: 168.6250		N	EMERGENCY USE ONLY		
		TX: 168.6250	110.9				

5. Prepared by Don Stoner ComL

REPEATER LOCATION C-7 EMEY PEAK N 40 29.902 W 123 17.616 4700'

**WALLOW INCIDENT FIRE SUPPRESSION REHABILITATION PLAN**  
**Attachment A – Rehabilitation Specifications**

The following guidelines are to be applied when implementing fire suppression rehabilitation on the Wallow Incident.

**OBJECTIVES**

- Minimize surface and gully erosion.
- Minimize sediment delivery to stream channels.
- Restore conditions to pre-fire drainage patterns.

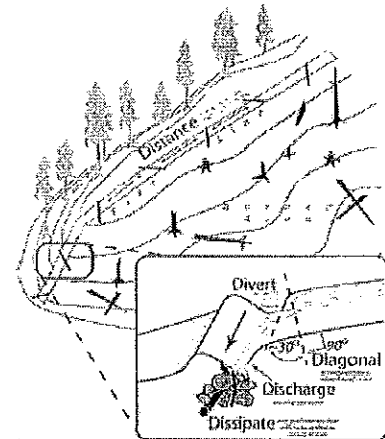
**GENERAL GUIDELINES**

**Hand and Dozer Lines**

- Install and construct water bars on firelines according to the following guidelines. (See diagram below)

<u>Fireline Slope</u>	<u>Maximum Spacing (ft)</u>
1-6%	300
7-9%	200
10-14%	150
15-20%	90
21-40%	50
41-60%	25

Note: Modify spacing to take best advantage of rocks, brush clumps and natural drainage as discharge outlets and to avoid unstable terrain.



- Where short-cutting between trails has occurred, construct barriers with native material.
- Pick up and remove all garbage, flagging, litter and unneeded equipment.
- Breach trenches approximately every 100 feet in logical locations such as dips in the line.
- Scatter slash on the unburned side of the fireline.
- Where lines cross drainages, loose soil and woody debris should be removed 25 feet on both sides of the channel. Place woody debris perpendicular to channel to ensure debris will not roll back into the channel.

**Trail and Road Repair**

- All system roads identified for rehabilitation will be graded after suppression and rehab activities are concluded..
- Re-establish and repair suppression-damaged drainage structures to pre-fire conditions.
- Channel and system trail crossings created during suppression operations will be returned to pre-fire conditions.
- Remove new fill material and restore disturbed channels to their natural shape.
- Where lines cross hiking trails, remove suppression debris, rocks, brush and re-establish trail subgrade and tread.

**Camps and Drop Points**

- Pull back brush, berms, rocks and spread over site. Blend site with natural surroundings.
- Remove all flagging, garbage, litter and unneeded equipment.
- Restore sites to pre-fire conditions. Comply with all conditions of any Land Use Agreements.

**SPECIAL PROVISIONS (When Applicable)**

- Motorized equipment will be thoroughly cleaned to prevent noxious weed seeds from entering National Forest Lands.
- Materials used in repair work, i.e., straw, mulch, seed etc. will be certified noxious weed free.
- No repair work shall commence at heritage resource sites without consultation with the archaeologist.



# TRAINING SPECIALIST MESSAGE

All training packages must be completed and turned in to Training by **1200 hours** today, September 4<sup>th</sup>.

*Bring the following to the exit interview*

- *A completed and signed ICS 225 or 226 Performance Evaluation*
- *A completed Exit Interview Form*

***Forms are available in the Training Office***

Brad Smith

Training Specialist

# Finance Information

**Guaranteed Hours on an incident** – Every day is considered a workday during an incident until the incident is over or the individual is officially released from the incident. All individuals are ensured pay for base hours of work, travel or ordered standby at the appropriate rate of pay for each workday. **Exception: When personnel are required to take a mandatory day off which falls on their normal day off, there will be no pay compensation.**

Individuals under a compressed 9 or 10 hour work schedule are ensured of at least those 9 or 10 hours per day on days corresponding to their weekly tour of duty. On days that normally would be off time at the home unit, individuals are ensured only 8 hours.

**Compensable meal breaks** – Personnel on the fireline may be compensated for their meal period if all the following conditions are met:

1. The fire is not controlled, and
2. The operations section makes a decision that it is critical to the effort of controlling the fire that personnel remain at their post of duty and continue to work as they eat, and
3. The compensable meal break is approved by the supervisor at the next level of the crew boss and it is documented on the Crew Time Report.

**Incident Driving Regulations** –

1. No driver will drive more than 10 hours (behind the wheel) within any duty.
2. Multiple drivers in a single vehicle may drive up to the duty day limitation provided no driver exceeds the individual driving (behind the wheel) time limitation of 10 hours.
3. A driver shall drive only if they have had at least 8 consecutive hours off duty before beginning a shift.

**Exception:** Exception to the minimum off duty hour requirement is allowed when **essential** to:

- a) accomplish immediate and critical suppression **objectives**, or
- b) address **immediate** and **critical** firefighter or public safety issues
4. As stated in the current agency work/rest policy documentation of mitigation measures used to reduce fatigue is required for drivers who exceed 16 hour workshifts. This is required regardless of whether the driver was still compliant with the 10 hour individual (behind the wheel) driving time limitation.

**Shift Length** – Shift length including travel to and from the line should not be over **16 paid hours**. Any shifts in excess of 16 paid hours need an explanation in the remarks section of the CTR, as well as needing IC approval before time can be accepted and posted.

**CTR Approval** – CTRs **must** be signed by your next higher supervisor. If the Crew Foreman or Superintendent is also the Crew Boss, then the Division Supervisor must sign. Crew Foreman or Superintendent signatures on CTRs for their own crew will not be accepted except for travel to and from an incident.

Please turn in CTRs and shift tickets at the end of each operational period.

**Work/Rest Guidelines** – Plan for and ensure that all personnel are provided a minimum 2:1 work rest ratio (for every 2 hours of work or travel, provide 1 hour of sleep and/or rest). Work shifts that exceed 16 hours and/or consecutive days that do not meet the 2:1 work/rest ratio should be the exception, and no workshift should exceed 24 hours. However, in situations where this does occur (for example, initial attack), incident personnel will resume 2:1 work/rest ratio as quickly as possible.

On incidents during assigned operational periods, work shift time includes travel to and from the worksite, compensable and non-compensable meal breaks, debriefing and equipment refurbishment following the shift in preparation for the next operational period. Work shift length maximums are just that and should be reduced as necessary to counter the effects of acute or cumulative fatigue.

**Start times** – In general, shifts start no earlier than ½ hour before briefing time for federal or AD crew bosses, captains, etc, as well as for overhead single resource line positions, shift time also starts at briefing time for federal or AD crews. Contract crews are paid according to contract specifications. Any variance to this policy needs to be explained in detail in the remarks section.

# WALLOW FIRE PHONE LIST 9-02-2007 Revised

<i><b>Command and Staff: land line</b></i>	Cell #
IC-Kaage 530-628-5913	530-351-1434-c
Deputy IC-Molhoek, Fike(T) 628-5913	530-351-3205-c
Safety-O'Connell, Lowe (T) 628-5739	530-351-1228-c
Information-Thompson 530-628-5915	530-351-1459-c
Information-Chapman	415-259-7202-c
Information-Marron	530-227-3887-c
<i><b>Planning Operations:</b></i>	
Davis 530-628-5840	
<i><b>Air Ops.</b></i> Bunt 530-628-4276	530-598-0594-c
<i><b>Planning Section:</b></i>	
Planning Section Chief:	
Farrell 530-628-5735	
Resource Unit: Lutz, Frazier 628-1637	
Situation/GIS-Hays, Stavely, 628-5738	
Weather/Fire Behavior-Rodgers	
Check-in/Demob- Lutz 530-628-1637	
FAX 530-628-5035	
Training: Smith 530-628-5735	
<i><b>Logistics Section:</b></i>	
Costello	916-995-7653-c
Supply Unit- Valentine 628-5298	
ORDERING - 628-5874	
Ordering: Morris	
FAX 628-5904	

Facilities Unit: Hennessy 628-5918	
Ground Support-Connick 628-4061	530-957-7187-c
Communications Unit-530-628-4042	
COMT-Stoner/Lewis	530-514-9953-c
<b>Medical Unit / H.R.-Brose 628-5917</b>	530-518-2981-c
<i><b>Finance Section:</b></i>	
Lopez 530-628-5492	
FAX	
Personnel Time 530-628-5492	
Equipment Time 530-628-5709	
Comp/Claims, Lopez 530-628-5492	
Cost Unit- Anderson 530-628-5709	
<i><b>Other</b></i>	
Fire Info Table 530-628-5914	
Toziers Support 530-628-5736	
Toziers Support Fax: 530-628-5737	
<i><b>Expanded Dispatch</b></i>	
Overhead:530-247-1635	
Crews:530-247-1261	
Expanded FAX:530-244-0291	
<i><b>Buying Team:530-226-2570</b></i>	

