

Incident Action Plan

Wallow Fire

CA-SHF-001882

P5DYU1



DAY SHIFT

Sunday, September 2, 2007

0600-1800

INCIDENT OBJECTIVES	1. Incident Name WALLOW	2. Date SEPTEMBER 1, 2007	3. Time 2000
4. Operational Period • SEPTEMBER 2, 2007 0600-1800			
5. General Control Objectives for the Incident (include alternatives) MANAGEMENT OBJECTIVES <ul style="list-style-type: none"> • The primary objective is to provide for firefighter and public safety throughout all incident operations. • Without compromising safety, minimize suppression impacts to private property, riparian areas, South Fork Trinity River, and Late Successional Reserves (LSR). • Adhere to the 2:1 work rest cycle. • Address suppression cost accountability by keeping fire expenditures commensurate with public and private values at risk. • Maintain clear and prompt information exchange with Forest, local communities and cooperators. • Assume Initial Attack responsibilities as requested by Shasta-Trinity National Forests. • Continue with Demobilization Plan implementation. OPERATIONAL OBJECTIVES <ul style="list-style-type: none"> • Keep fire within current containment lines. 			
6. Weather Forecast for Period See Spot Weather Forecast			
7. General Safety Message Stay alert to changing weather conditions and its potential to affect fire behavior. Drink plenty of fluids and use extra caution while traversing steep slopes. Some access roads are dusty and can be very hazardous. Watch out for oncoming traffic and livestock. Always maintain a safe driving speed.			
8. Attachments (mark if attached)			
<input checked="" type="checkbox"/> Organization List - ICS 203	<input checked="" type="checkbox"/> Medical Plan - ICS 206	<input checked="" type="checkbox"/> Weather	
<input checked="" type="checkbox"/> Div. Assignment Lists - ICS 204	<input type="checkbox"/> Incident Map	<input checked="" type="checkbox"/> Safety Message	
<input checked="" type="checkbox"/> Communications Plan - ICS 205	<input type="checkbox"/> Traffic Plan	<input type="checkbox"/> LCES Worksheet	
9. Prepared by (Planning Section Chief) <i>Paul J. Furl</i>	10. Approved by (Incident Commander) <i>Joe Molhoek</i> DIC		

ORGANIZATION ASSIGNMENT LIST		9. Operations Section	
1. Incident Name Wallow Fire		Day Ops Chief	Steve Raymer
2. Date 09/01/07		Night Ops Chief	Mike Beckett
3. Time 1800		Planning Ops	Frank Davis (T)
4. Operational Period 09/02/2007 Day Shift 0600-1800		a. Branch I - Division/Groups	
Position	Name	Division/Group A	Rick Young/ Kyle Johnson (T)
5. Incident Commander and Staff		Division/Group G	Jim Christian/ Terry Walker(T)
Incident Commander	Bill Kaage	Division/Group O	Steve Davis/ Riva Duncan(T)
Deputy	Joe Molhoek/Tim Fike (T)	Division/Group Z	Mike Cherry/ David Ray (T)
Safety Officer	Terry O'Connell, Aaron Lowe(T)	Division/Group	
Information Officer	Cathleen Thompson/ Jennifer Chapman(T)	b. Branch II - Division/Groups	
Liaison Officer		Branch Director	
6. Agency Representative		Deputy	
Agency	Name	Division/Group	
CALFIRE Agency Rep	Kelly Dreesmann	Division/Group	
Line Officer Rep	Donna Harmon	Division/Group	
Resource Advisor	Mark Arnold, Mark Goldsmith	Division/Group	
Trinity County OES Coord.	Richard Smith	Division/Group	
IARR	Danny Gomez	Division/Group	
		c. Branch III - Division/Groups	
7. Planning Section		Branch Director	
Chief	Pat Farrell	Deputy	
Deputy		Division/Group	
Resources Unit	Dean Lutz, Barb Frazier(T)	Division/Group	
Situation Unit	Phyllis Banducci, John Staveley(T)	Division/Group	
Documentation Unit		d. Air Operations Branch	
Demobilization Unit	Dean Lutz	Air Operations Branch Director	Walter Bunt
Fire Behavior Analyst	Gene Rogers	Air Attack Supervisor	
Incident Meteorologist		Air Support Group Supervisor	Russ Gorden
Human Resources		10. Finance Section	
Training Specialist	Brad Smith	Chief	Beth Lopez
GISS	David Hays, Kim Vieira, David Benitez (T)	Deputy	
8. Logistics Section		Time Unit	Penny Portlock
Chief	Jack Costello	Equipment Time Unit	Juanita Cortez
Deputy	Jack Knight	Compensation/Claims Unit	
Supply Unit	Tracey Valentine(T)	Cost Unit	Rich Andersen
Facilities Unit	Hank Hennessy, Kevin Browning(T)	Prepared by (Resource Unit Leader) <i>Barb Frazier</i>	
Ground Support Unit	Mike Heckendorn, Greg Connick(T)		
Communications Unit	Don Stoner		
Medical Unit	Karen Brose		
Security Unit			
Food Unit	Dawn Pedersen		

FIRE BEHAVIOR FORECAST NO. 6

NAME OF FIRE: WALLOW
LOCATION: SHASTA-TRINITY NF
TIME AND DATE
FORECAST ISSUED 19:30 9/1/07

PREDICTION FOR: DAY SHIFT
SHIFT DATE: 9/2/07
PREPARED BY: Gene Rogers
GENE ROGERS, FIRE BEHAVIOR ANALYST

WEATHER SUMMARY:

See attached Spot Weather Forecast from Eureka Fire Weather Office

FIRE BEHAVIOR

GENERAL:

Fire behavior has been diminished to smoldering, creeping and isolated interior burning. Low fine dead fuel moisture (3%) will maintain fire spread and spotting potential. Another night of only fair overnight humidity recovery will mean the fire will have remained active through the night. All dead fuel size classes will burn and consume. Interior hot spots in the west side of the fire should be burning out.

SPECIFIC:

Div A,G,O and Z: No significant fire behavior problems expected.

There is the possibility of active interior burning launching embers and causing spots beyond the containment lines and mop-up areas. Watch for increasing smoke in any unburned islands within ½ mile of the fire perimeter. Spotting of over ¼ mile can be expected. Probability of ignition will be 80-90% regardless of shading.

These fire spread predictions are for unsheltered, exposed areas of fuel. Common spread will be less. Fuel model 2 (grass) will exhibit 25-40 chains per hour with 6-7 foot flame lengths on slopes up to 40 percent. Pockets of decadent brush, fuel model 6 are capable of exhibiting upslope runs of 30-40 chains per hour with flame lengths over 6-7 feet. Fuel model 10 (forest litter with heavy dead/down) will exhibit up to 8-10 chains per hour with 5-6 foot flame lengths on slopes up to 40 percent.

AIR OPERATIONS:

Good flying conditions.

SAFETY:

Many snags are in the fire area, watch for embers and falling limbs and chunks. Interior trees and snags have been weakened and will be falling. Burned out stumps and logs will create walking hazards, avoid large areas of white ash.

DIVISION ASSIGNMENT LIST			1. Branch		2. Division/Group A		
3. Incident Name WALLOW			4. Operational Period DAY OPERATIONS Date: 09/02/2007 Time: 0600-1800				
5. Operations Personnel							
Operations Chief		Steve Raymer		Division/Group Supervisor		Rick Young/Kyle Johnson(T)	
Branch Director				Air Attack Supervisor			
6. Resources Assigned this Period							
Strike Team/Task Force/ Resource Designator	Leader	Last Shift	Number Persons	Trans. Needed	Drop Off PT./Time	Pick Up PT./Time	
HC2IA TCA Crew 5 (C-21)	Dary Gala	9/14	20	N	DP3/0700	TBD	
HC2 Fort Apache 11 (C-36)	Orlando Tessay	9/14	20	N	DP3/0700	TBD	
ENG3 ST 3150C	Jon Bauer	9/13	17	N	DP3/0700	TBD	
WT Stan Leach (E-8)	Ron White	9/11	1	N	DP3/0700	TBD	
WT Hoaglen Trucking (E-10)	Jack Hoaglen	9/11	1	N	DP3/0700	TBD	
WT Wet Pup 190 (E-7)	Roy Rucker	9/11	1	N	DP3/0700	TBD	
FEMT (O-33)	Josh Raczka	9/15	1	N	DP3/0700	TBD	
7. Control Operations							
<ul style="list-style-type: none"> Patrol and mop-up 500 feet. Initiate rehab 							
8. Special Instructions							
9. Division/Group Communication Summary							
Function	Frequency	System	Channel	Function	Frequency	System	Channel
Command	Rx 162.9625 Tx 171.7875	KING	8				
Tactical Div/Group	Rx 166.7250 Tx 166.7250	KING	1	Air to Ground	Rx 165.6000 Tx 165.6000	KING	13
Prepared by (Resource Unit Leader)		Approved by (Planning Section Chief)		Date		Time	
<i>Bob Kravitz</i>		<i>Charles Jones</i>		09/01/2007		1800	

DIVISION ASSIGNMENT LIST			1. Branch		2. Division/Group G		
3. Incident Name WALLOW			4. Operational Period DAY OPERATIONS Date: 09/02/2007 Time: 0600-1800				
5. Operations Personnel							
Operations Chief		Steve Raymer		Division/Group Supervisor		Jim Christian/Terry Walker (T)	
Branch Director				Air Attack Supervisor			
6. Resources Assigned this Period							
Strike Team/Task Force/ Resource Designator	Leader	Last Shift	Number Persons	Trans. Needed	Drop Off PT./Time	Pick Up PT./Time	
HC2IA Ore-Cal 1 (C-12)	Bruce Melairei	9/10	20	N	DP1/0700	TBD	
HC2 Navajo Scouts (C-22)	Howard Kenny	9/14	20	N	DP1/0700	TBD	
TFLD (O-13)	Kurt Thompson	9/14	1	N	DP1/0700	TBD	
ENG ST 6632C (E-51)	Michael Tucker	9/14	24	N	DP1/0700	TBD	
DOZB (O-17)	Tim Epp	9/14	1	N	DP1/0700	TBD	
DZ2 Plumas 1 (E-47)	Scott Sibbald	9/13	2	N	DP1/0700	TBD	
DZ2 Plumas 2 (E-48)	Ryan Southwick	9/13	2	N	DP1/0700	TBD	
WT Cattaneo 1 (E-11)	Scott Dias	9/11	1	N	DP1/0700	TBD	
WT Cattaneo 2 (E-12)	Anthony Munk	9/11	1	N	DP1/0700	TBD	
WT CA-SRF WT 35 (E-5)	Kiya Bennett	9/11	1	N	DP1/0700	TBD	
7. Control Operations							
<ul style="list-style-type: none"> Patrol and mop-up 500 feet. Initiate rehab. 							
8. Special Instructions							
9. Division/Group Communication Summary							
Function	Frequency	System	Channel	Function	Frequency	System	Channel
Command	Rx 162.9625 Tx 171.7875	KING	8				
Tactical Div/Group	Rx 166.7750 Tx 166.7750	KING	2	Air to Ground	Rx 165.6000 Tx 165.6000	KING	13
Prepared by (Resource Unit Leader) <i>Bomb King</i>		Approved by (Planning Section Chief) <i>Patrol Jandl</i>			Date 09/02/2007		Time 1800

DIVISION ASSIGNMENT LIST			1. Branch		2. Division/Group		
3. Incident Name WALLOW			4. Operational Period DAY OPERATIONS Date: 09/02/2007 Time: 0600-1800				
5. Operations Personnel							
Operations Chief		Steve Raymer		Division/Group Supervisor		Steve Davis/Riva Duncan (T)	
Branch Director				Air Attack Supervisor			
6. Resources Assigned this Period							
Strike Team/Task Force/ Resource Designator	Leader	Last Shift	Number Persons	Trans. Needed	Drop Off PT./Time	Pick Up PT./Time	
SOF2 (O-53)	Steven Herkenhoff	9/14	1	N	DP7/0700	TBD	
HC2 NM-SPA 1 (C-38)	Delbert Benally	9/14	20	N	DP7/0700	TBD	
HC2 Navajo Scouts 15 (C-37)	Terry Tso	9/14	20	N	DP7/0700	TBD	
HC2 Firestorm 1 (C-11)	Josh Hiller	9/12	19	N	DP7/0700	TBD	
TFLD (O-12)	Teri Cairns	9/13	1	N	DP7/0700	TBD	
TFLD(T) (O-122)	Timothy Diaz	9/14	1	N	DP7/0700	TBD	
ENG3 CA-MNF 32 (E-77)	Richard Milton	9/15	5	N	DP7/0700	TBD	
ENG3 Flying Eagle Ranch (E-78)	Shawn Betters	9/15		N	DP7/0700	TBD	
ENG3 CA-SRF 33 (E-3)	Lester White	9/12	5	N	DP7/0700	TBD	
ENG3 CA-SHF 12 (E-110)	Andy Thorne	9/11	5	N	DP7/0700	TBD	
ENG6 CA-TNF 42 (E-21)	Mike Durocher	9/13	5	N	DP7/0700	TBD	
WT CA-SHF 36 (E-113)	Dan Montgomery	9/12	1	N	DP7/0700	TBD	
WT Zabel Trucking (E-14)	Wade Zabel	9/11	1	N	DP7/0700	TBD	
WT Martha H2O (E-9)	Bill Smith	9/11	1	N	DP7/0700	TBD	
WT Ken's WT (E-16)	Wayne Andrews	9/11	1	N	DP7/0700	TBD	
WT Stuart WT (E-29)	Mart Stuart	9/11	1	N	DP7/0700	TBD	
FOBS (O-28)	Joseph Hallett	9/13	1	N	DP7/0700	TBD	
FOBS (T) (O-29)	Angie Carl	9/14	1	N	DP7/0700	TBD	
7. Control Operations <ul style="list-style-type: none"> Patrol and mop-up 500 feet. Initiate rehab. 							
8. Special Instructions							
9. Division/Group Communication Summary							
Function	Frequency	System	Channel	Function	Frequency	System	Channel
Command	Rx 162.9625 Tx 171.7875	KING	8				
Tactical Div/Group	Rx 168.2500 Tx 168.2500	KING	3	Air to Ground	Rx 165.6000 Tx 165.6000	KING	13
Prepared by (Resource Unit Leader) <i>Barb Franz</i>		Approved by (Planning Section Chief) <i>Patricia Paul</i>		Date 9/01/2007		Time 1830	

DIVISION ASSIGNMENT LIST			1. Branch		2. Division/Group Z		
3. Incident Name WALLOW			4. Operational Period DAY OPERATIONS Date: 09/02/2007 Time: 0600-1800				
5. Operations Personnel							
Operations Chief		Steve Raymer		Division/Group Supervisor		Mike Cherry/David Ray(T)	
Branch Director				Air Attack Supervisor			
6. Resources Assigned this Period							
Strike Team/Task Force/ Resource Designator	Leader	Last Shift	Number Persons	Trans. Needed	Drop Off PT./Time	Pick Up PT./Time	
HC2IA Ukonom (C-3)	John Cataldo	9/11	19	N	DP6/0700	TBD	
HC2 Firestorm4 (C-14)	Garrett Dunn	9/12	18	N	DP6/0700	TBD	
ENG3 CA-SHF 22 (E-111)	Ben Sundal	9/11	5	N	DP6/0700	TBD	
ENG6 Blaze Runners (E-61)	Matt Kolsky	9/13	3	N	DP6/0700	TBD	
ENG6 Blaze Runners (E-23)	Ryan Flores	9/13	3	N	DP6/0700	TBD	
ENG6 Pacific Oasis (E-22)	Pete Hawley	9/13	2	N	DP6/0700	TBD	
WT Rochlitz (E-30)	Steve Jones	9/11	1	N	DP6/0700	TBD	
WT M & K WT (E-13)	Marsha Maraviov	9/11	1	N	DP6/0700	TBD	
WT Wet Pup 604 (E-6)	Len Murdock	9/11	1	N	DP6/0700	TBD	
WT Rochlitz (E-31)	Ron Rochlitz	9/11	1	N	DP6/0700	TBD	
WT Ken's WT (E-15)	Bill Atkinson	9/11	1	N	DP6/0700	TBD	
WT Brown's WT (E-17)	Odus Powell	9/11	1	N	DP6/0700	TBD	
FELB (O-14)	John Johnston	9/13	1	N	DP6/0700	TBD	
FELB (O-15)	Michael Steineke	9/14	1	N	DP6/0700	TBD	
FALC (O-117)	Alan Claborn	9/14	2	N	DP6/0700	TBD	
Faller Module(O-116)	Rod Patton	9/14	2	N	DP6/0700	TBD	
7. Control Operations							
<ul style="list-style-type: none"> Patrol and mop-up 500 feet. Initiate rehab. 							
8. Special Instructions							
9. Division/Group Communication Summary							
Function	Frequency	System	Channel	Function	Frequency	System	Channel
Command	Rx 162.9625 Tx 171.7875	KING	8				
Tactical Div/Group	Rx 173.9125 Tx 173.9125	KING	4	Air to Ground	Rx 165.6000 Tx 165.6000	KING	13
Prepared by (Resource Unit Leader) <i>Steve Raymer</i>		Approved by (Planning Section Chief) <i>Paula Far</i>			Date 9/01/2007		Time 1800

INCIDENT RISK ANALYSIS

Wallow Day Shift (ICS 215A)

DIV	HAZARDOUS ACTIONS / CONDITIONS	MITIGATIONS / WARNINGS / REMEDIES
ALL	DRIVING HAZARDS	<ul style="list-style-type: none"> • DO NOT CUT THE CORNERS while driving on the roads. • Drive defensively! Expect the unexpected around every curve. • Drive with headlights on; use chock blocks, keep windshields clean; look before backing and use backers whenever available. • Keep speeds to 25 MPH through Hayfork. • Maintain Situational Awareness.
ALL	FATIGUE	<ul style="list-style-type: none"> • Be alert for signs of fatigue and take breaks as necessary. Monitor for cumulative effects. Maintain 2:1 work/rest ratio. Monitor incoming resources for level of fatigue.
ALL	COMPLACENCY	<ul style="list-style-type: none"> • Ensure proper PPE is being utilized during all operations. • Situational Awareness must be maintained for the duration of the operational period and incident. • Make sure all personnel receive thorough briefings every shift.
ALL	FIRE BEHAVIOR	<ul style="list-style-type: none"> • Watch for local winds starting mid -afternoon. • Monitor current weather conditions and forecasts. Be observant for formation and passage of thunder cells through or close to fire area and alert all personnel. • Maintain adequate escape routes and safety zones. Advise all personnel if these are compromised or changed. Set trigger points when appropriate. • Adhere to 10 Std Orders, mitigate 18 situations. Maintain Situational Awareness.
ALL	POISON OAK	<ul style="list-style-type: none"> • Review identification of poison oak. • Avoid poison oak and wash as frequently as possible. Use "Technu" if available. • Change into clean clothing as often as possible.
ALL	DOZERS	<ul style="list-style-type: none"> • Brief all resources on working around heavy equipment.
ALL	Snags/Hazard Trees	<ul style="list-style-type: none"> • Identify and mitigate hazardous situations prior to beginning work. Pay attention to your surroundings.

INCIDENT NAME: <b style="font-size: 1.2em;">Wallow ICS 215a	DATE PREPARED: <p style="text-align: center;">September 1, 2007</p> <hr/> TIME PREPARED 1935 hrs	OPERATIONAL PERIOD <p style="text-align: center;">09/2/2007 Day 0600-1800</p> Prepared by, T OConnell, A Lowe (T)
---	---	---

WALLOW
September 2, 2007
Day Shift 0600-1800

Safety Message

FOCUS YOUR ATTENTION ON:

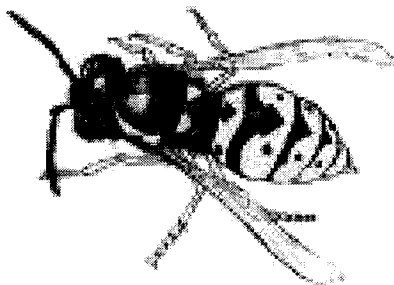
- **Mitigating hazards associated with Mop – Up**
 - **Use of Appropriate PPE**
 - **Pack it in, Pack it out.**
-
- * **Conduct thorough briefings for all personnel**
 - * **Identify, acquire and utilize the right safety equipment for the job**
 - * **Stay alert and maintain Situational Awareness**
 - * **Minimize exposure to hazards**
 - * **Driving - keep your speed down**
 - * **Look Up, Look Down, Look Around. Post lookouts as necessary**
 - * **Drive Defensively. Be prepared for someone or something around every turn**

(Yellow Jacket Alert) see attachment in your IAP

Nor Cal Team II Safety Officers -Terry Oconnell, Aaron Lowe (T)

YELLOW JACKET SAFETY BRIEFING

A recent incident on the Shasta-Trinity NF and reports of Yellow Jacket abundance at this time of year, and perhaps especially this year warrant some information on the subject of safety related to Bee and Yellow Jackets and their stings. Dealing with attacks and stings of Yellow Jackets or bees may be similar, but the "Yellow Jacket wasp" or "meat bee" stings may be more numerous.



Yellow Jackets are considered beneficial around home gardens and commercially grown fruits and vegetables at certain times of the year because they feed abundantly on insect pests such as caterpillars and harmful flies. Unfortunately, in late summer and early fall when their populations peak, the Yellow Jacket's normal insect diet disappears and their feeding habits become a problem to man. At this time of year, the Yellow Jacket has an appetite for much the same food and drink as those consumed by man. Also, Yellow Jacket stings can result in a life-threatening situation, especially if the person is allergic to Yellow Jacket venom.

Nests are normally located in a soil cavity such as an abandoned mouse nest or hollow tree. Other possible nests sites are in buildings, including attics, porches, eaves or sheds. Disturbing ground nests or trees can cause swarming Yellow Jackets to attack.

Fire Management Notes--

When attacked by honey bees or Yellow Jacket wasps -

1. If at all possible, run away from the nest as quickly as you can
2. If running away is impossible due to injury, fire conditions, or topography, then deploy a fire shelter to drastically reduce the number of stings. Get your head and neck under the shelter as quickly as possible, and try to lie flat, covering the rest of your body if possible.
3. Flatten down the edges of the shelter along the ground to prevent additional insects from entering.
4. If stung by honey bees, remove stings by rubbing your hands over exposed skin. Remove stings in clothing by rubbing or pulling on the cloth.
5. Use gloved hands to crush any insects inside the shelter.
6. After the bees or Yellow Jackets settle down (which will take several minutes to an hour, depending on the degree of their agitation), move away from the nest, using the shelter as protection from any remaining defenders.

As always, knowledge of how to respond correctly in an emergency is the best insurance of survival. In most circumstances, timely escape is best; but when escape is impossible, the fire shelter can provide significant protection from stings. The fire shelter now has a new, potentially life-saving application.

YELLOW JACKET SAFETY BRIEFING

Allergic reactions to Yellow Jacket or bees stings may cause shock and life threatening conditions. Those with known allergies should carry sting treatment kits. Co-workers of multiple sting victims should watch the co-worker and be prepared for emergency medical responses and evacuation.

General guidelines are to leave the area, and covering the face with both hands to protect the sensitive body areas.

Safety Measures

Precautions should be taken when working or playing in areas that are likely to be inhabited by Yellow Jackets. Logging equipment operators often disturb nests in the forest that can make their work very dangerous. A veil, hat and pressurized container of wasp or hornet spray are highly recommended during summer and fall.

If a colony is disturbed, a person should slowly walk away with both hands covering the face to protect the more sensitive body areas. It is best to walk toward dense vegetation or enter a vehicle or building to avoid the stinging insects. Swift movements will only attract more yellow jackets. Persons highly sensitive to yellow jacket venom should always carry a sting treatment kit during outdoor activities.

A Yellow Jacket does not leave a stinger in its victim, so there for it can sting multiple times. To reduce swelling following a stinging incident, a person may use several sting remedies. A convenient material to lace on the sting site is moistened table salt. Mound the dry salt on the sting entry point and moisten with a few drops of water. Leave the salt on the site for several minutes. This procedure must be applied within three to four minutes following the stinging incident to be effective.

Yellow Jackets and other stinging insects often get inside moving vehicles, which may result in a very dangerous situation. The driver should carefully stop the vehicle on the side of the road and all passengers should exit on the front passenger's side of the vehicle to avoid traffic. The driver should open all windows and leave the passenger doors open to allow the insects to exit the vehicle. Flying insects normally go immediately to the windows when inside a moving vehicle in an attempt to escape and are rarely in a defensive posture inside a moving vehicle unless provoked by an occupant. Persons should refrain from swatting the insect inside the vehicle.

Michael Cobbold
Safety Officer
Shasta-Trinity and Mendocino National Forests

MEDICAL PLAN	1. INCIDENT NAME Wallow Fire	2. DATE PREPARED 09/01/07	3. TIME PREPARED 2100	4. OPERATIONAL PERIOD 09/02/07 0600-1800 Day
---------------------	---	-------------------------------------	---------------------------------	--

5. INCIDENT MEDICAL AID STATIONS			
MEDICAL AID STATIONS	LOCATION	PARAMEDICS	
		YES	NO
Wallow Base Camp	Hayfork Fairgrounds	X	

6. TRANSPORTATION				
A. AIR AMBULANCE SERVICES				
NAME	ADDRESS	PHONE	PARAMEDICS	
			YES	NO
PHI Air Medical	3775 Flight, Redding CA	530-225-7250	X	
Reach	1100 Butte Street, Redding CA	800-338-4045	X	

B. AMBULANCES			
NAME	LOCATION	PARAMEDICS	
		YES	NO
Arcata - Mad River Ambulance	ALL DIVISIONS	X	

7. HOSPITALS								
NAME	ADDRESS	TRAVEL TIME		PHONE	HELIPAD		BURN CENTER	
		AIR	GRND		Y	N	Y	N
Trinity Hospital	60 Easter Avenue, Weaverville CA	15min	60min	530-623-5541	X			X
Mercy Medical Center	2175 Rosaline Avenue, Redding CA	25min	120min	530-225-7201	X			X
Shasta Regional	1100 Butte Street, Redding CA	25min	120min	800-338-4045	X			X
UC Davis Burn Center	2315 Stockton, Sacramento CA	60min	-----	916-734-5669	X		X	

8. MEDICAL EMERGENCY PROCEDURES	
<p>LINE EMERGENCY: Crew Supervisor is to contact DIVS w/ patient complaint/condition and location.</p> <p>DIVS will run medical emergency on CMD RPT Channel 8 *** Clear Command Channel for Emergency Traffic</p> <p>1. DIVS will contact:</p> <ol style="list-style-type: none"> Line EMT Wallow Communications <p>2. Wallow Communications will contact:</p> <ol style="list-style-type: none"> Basecamp Medical Unit Safety/IC Day Operations <p>ICP EMERGENCY: Contact Medical Unit with patient complaint/condition and location. Medical Staff will respond or patient delivered to Medical Unit.</p> <ul style="list-style-type: none"> Communications contacts <ol style="list-style-type: none"> Medical Safety/IC Operations 	<p align="center">INJURY REPORTING PROCEDURES</p> <p>PATIENT UNIT ID _____</p> <p>IS A EMT WITH PATIENT: YES ____ NO ____</p> <p>AGE _____</p> <p>SEX: MALE ____ FEMALE ____</p> <p>NATURE OF INJURY _____ #Pts _____</p> <p>+ LOC Y / N Level of Consciousness A & O X _____</p> <p>LOCATION OF PATIENT _____</p> <p>SPECIAL RESCUE/EXTRICATION NEEDS _____</p> <p>TRANSPORTATION REQUESTED BY: AIR ____ GRD ____</p> <p>RONDEZVOUS _____</p> <p>POINT OF PICKUP _____</p> <p>LAT _____ LONG _____</p> <p>NOTES:</p> <p align="center">KEEP CALM</p>

ICS 206 8-78	9. PREPARED BY (MEDICAL UNIT LEADER) Karen Brose MEDL	10. REVIEWED BY (SAFETY OFFICER) Terry O'Connell/Aaron Lowe (T)
--------------	--	--

AIR OPERATIONS SUMMARY

PREPARED BY: **Walter Bunt AOB** NorCal II

PREPARED DATE/TIME: 9/01/2007 2100

1. INCIDENT NAME: **WALLOW**

2. OPERATIONAL PERIOD DATE: 09/02/07 START TIME: 0800 END TIME: 2000 SUNRISE: 06:32 SUNSET: 19:36

3. REMARKS

- All aviation resources have been reassigned to the Chipmunk fire and are located at Weaverville Airport.
- Frequencies associated with aviation operations will remain in effect until incident transition.
- TFR has been removed.
- Hayfork helibase has been demobed.

4. MEDEVAC A/C:

See Medical Plan

5. TFR:

NO TFR OVER FIRE!!!

6. PERSONNEL

PERSONNEL	Phone	7. FREQUENCIES			8. FIXED-WING	
		AIR/AIR	AM	FM		
AOBD: Walter Bunt	(530)598-0594		122.225	166.2375	Airtankers	Rohnerville, Redding
ASGS: Russ Gorden	(707)367-4611	AIR/AIR ROTOR	122.425		Leadplanes	Order By Air Attack Through Redding ECC
Weaverville Helibase	(530)604-8643	AIR/GROUND:		165.600		Order By Air Attack Through Redding ECC
Redding Dispatch	(530)226-2400	COMMAND RPT:	TX: 171.7875 RX: 162.9625 Narrow Band No Tone			
Rohnerville AB	(707)725-4572	DECK		163.100	ATGS Aircraft	Order by AOB through Redding ECC
Redding Air Attack Base	(530)226-2795	TOLC FREQ:	122.800 (Unicom)		Other	
ICP Fax	(530)628-5737					

9. HELICOPTERS

10. TASK/MISSION/ASSIGNMENT

If aviation resources are required Division supervisors need to order through Air Operations with the following information:

- Location
- Ground contact
- Number and type of aircraft needed

AFTER ORDER IS PLACED EXPECT A 30 MINUTE RESPONSE TIME.

INCIDENT RADIO COMMUNICATIONS PLAN		1. Incident Name	2. Date/ Time Prepared	3. Operational Period Date/Time		
		WALLOW FIRE	09/01/07 2000	09/02/07 0600 - 1800		
Channel	Function	Frequency	Tone	Mode	Assignment	Remarks
1	TAC 1	RX: 166.7250		N	DIV -A	
		TX: 166.7250				
2	TAC 2	RX: 166.7750		N	DIV -G	
		TX: 166.7750				
3	TAC 3	TX: 168.2500		N	DIV -O	
		TX: 168.2500				
4	TAC 4	RX: 173.9125		N	DIV -Z	
		TX: 173.9125				
5	TAC 5	RX: 173.9625		N	UNASSIGNED	
		TX: 173.9625				
6	TAC 6	RX: 173.9875		N	SECURITY	
		TX: 173.9875				
7	SFMU NET	RX: 170.4875		N	SFMU DISTRICT NET	
		TX: 170.4875	Y			
8	CMD RPT	RX: 162.9625		N	CMD REPEATER	
		TX: 171.7875				
9	SERVICE NET	RX: 164.1250		N	ALT CMD NET	TONE 4
		TX: 164.8250	Y			
10	I/A - CMD	RX: 171.5750		N	SHASTA-TRINITY I/A	TONES 4,8,11
		TX: 169.1000	Y			
11	CREW NET	RX: 168.2000		N	I/A	
		TX: 168.2000				
12	I/A A/G	RX: 170.0000		N	I/A AIR TO GROUND	
		TX: 170.0000				
13	A/G	RX: 165.6000		N	WALLOW AIR TO GROUND	
		TX: 165.6000				
14	AIR GUARD	RX: 168.6250		N	EMERGENCY USE ONLY	
		TX: 168.6250	110.9			
15		RX: 165.6000				
		TX: 165.6000				
16		RX: 168.6250		N	EMERGENCY USE ONLY	
		TX: 168.6250	110.9			
5. Prepared by Don Stoner ComL						
REPEATER LOCATION C-7 EMEMY PEAK N 40 29.902 W 123 17.616 4700'						

Finance Information

Guaranteed Hours on an incident – Every day is considered a workday during an incident until the incident is over or the individual is officially released from the incident. All individuals are ensured pay for base hours of work, travel or ordered standby at the appropriate rate of pay for each workday. **Exception: When personnel are required to take a mandatory day off which falls on their normal day off, there will be no pay compensation.**

Individuals under a compressed 9 or 10 hour work schedule are ensured of at least those 9 or 10 hours per day on days corresponding to their weekly tour of duty. On days that normally would be off time at the home unit, individuals are ensured only 8 hours.

Compensable meal breaks – Personnel on the fireline may be compensated for their meal period if all the following conditions are met:

1. The fire is not controlled, **and**
2. The operations section makes a decision that it is critical to the effort of controlling the fire that personnel remain at their post of duty and continue to work as they eat, **and**
3. The compensable meal break is approved by the supervisor at the next level of the crew boss **and** it is documented on the Crew Time Report.

Incident Driving Regulations –

1. No driver will drive more than 10 hours (behind the wheel) within any duty.
2. Multiple drivers in a single vehicle may drive up to the duty day limitation provided no driver exceeds the individual driving (behind the wheel) time limitation of 10 hours.
3. A driver shall drive only if they have had at least 8 consecutive hours off duty before beginning a shift.

Exception: Exception to the minimum off duty hour requirement is allowed when **essential** to:

- a) accomplish immediate and critical suppression **objectives**, or
- b) address **immediate** and **critical** firefighter or public safety issues
4. As stated in the current agency work/rest policy documentation of mitigation measures used to reduce fatigue is required for drivers who exceed 16 hour workshifts. This is required regardless of whether the driver was still compliant with the 10 hour individual (behind the wheel) driving time limitation.

Shift Length – Shift length including travel to and from the line should not be over **16 paid hours**. Any shifts in excess of 16 paid hours need an explanation in the remarks section of the CTR, as well as needing IC approval before time can be accepted and posted.

CTR Approval – CTRs **must** be signed by your next higher supervisor. If the Crew Foreman or Superintendent is also the Crew Boss, then the Division Supervisor must sign. Crew Foreman or Superintendent signatures on CTRs for their own crew will not be accepted except for travel to and from an incident.

Please turn in CTRs and shift tickets at the end of each operational period.

Work/Rest Guidelines – Plan for and ensure that all personnel are provided a minimum 2:1 work rest ratio (for every 2 hours of work or travel, provide 1 hour of sleep and/or rest). Work shifts that exceed 16 hours and/or consecutive days that do not meet the 2:1 work/rest ratio should be the exception, and no workshift should exceed 24 hours. However, in situations where this does occur (for example, initial attack), incident personnel will resume 2:1 work/rest ratio as quickly as possible.

On incidents during assigned operational periods, work shift time includes travel to and from the worksite, compensable and non-compensable meal breaks, debriefing and equipment refurbishment following the shift in preparation for the next operational period. Work shift length maximums are just that and should be reduced as necessary to counter the effects of acute or cumulative fatigue.

Start times – In general, shifts start no earlier than ½ hour before briefing time for federal or AD crew bosses, captains, etc, as well as for overhead single resource line positions, shift time also starts at briefing time for federal or AD crews. Contract crews are paid according to contract specifications. Any variance to this policy needs to be explained in detail in the remarks section.

TRAINING SPECIALIST MESSAGE

The deadline for closing out open training documentation is expected to be announced within the next couple of days.

In order to insure incident documentation of any training assignment – All government agency trainees must register and close assignments with the Training Specialist.

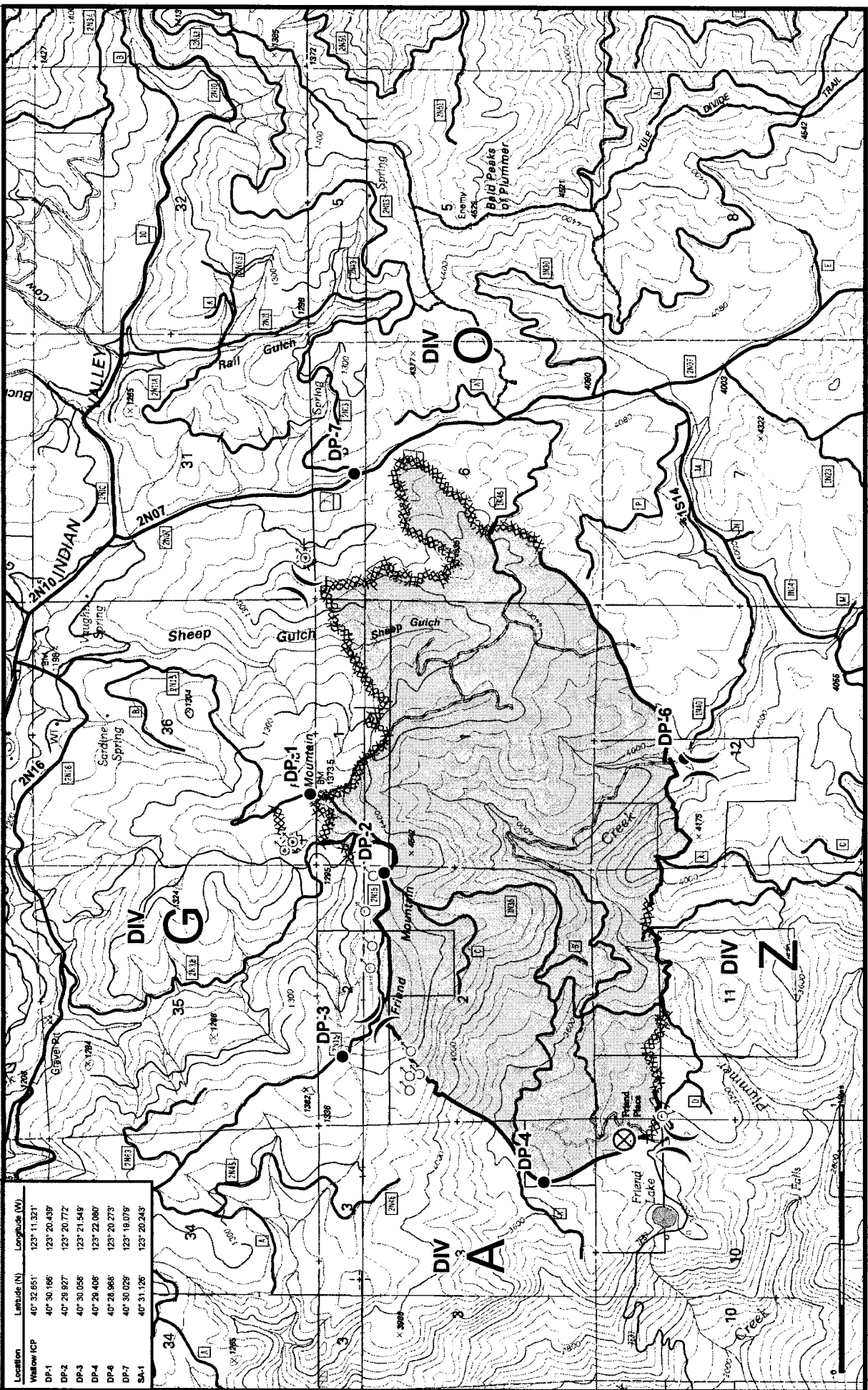
Brad Smith

Training Specialist

IAP Map

WALLOW FIRE

Location	Latitude (N)	Longitude (W)
Wallow ICP	40° 32.851'	123° 11.321'
DP-1	40° 30.166'	123° 20.039'
DP-2	40° 29.927'	123° 20.772'
DP-3	40° 30.058'	123° 21.549'
DP-4	40° 28.008'	123° 22.080'
DP-6	40° 28.868'	123° 20.273'
DP-7	40° 30.029'	123° 19.079'
SA-1	40° 31.126'	123° 20.243'





Location	Latitude (N)	Longitude (W)
Wallow ICP	40° 32.651'	123° 11.321'
DP-1	40° 30.166'	123° 20.439'
DP-2	40° 29.927'	123° 20.772'
DP-3	40° 30.058'	123° 21.549'
DP-4	40° 29.408'	123° 22.080'
DP-6	40° 28.968'	123° 20.273'
DP-7	40° 30.029'	123° 19.079'
SA-1	40° 31.126'	123° 20.243'

