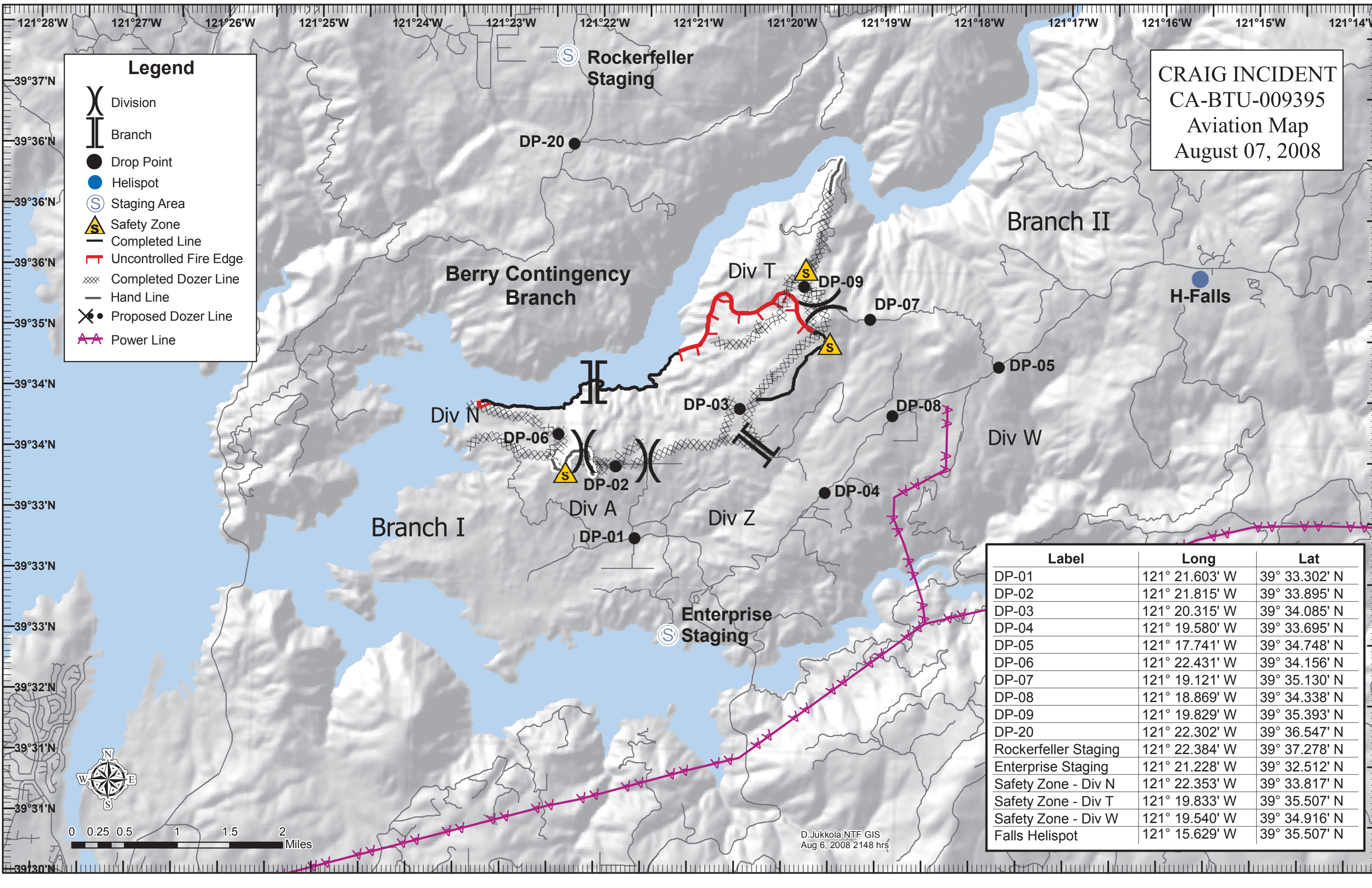


**CRAIG INCIDENT**  
**CA-BTU-009395**  
**Aviation Map**  
**August 07, 2008**

**Legend**

- Division
- Branch
- Drop Point
- Helispot
- Staging Area
- Safety Zone
- Completed Line
- Uncontrolled Fire Edge
- Completed Dozer Line
- Hand Line
- Proposed Dozer Line
- Power Line



Label	Long	Lat
DP-01	121° 21.603' W	39° 33.302' N
DP-02	121° 21.815' W	39° 33.895' N
DP-03	121° 20.315' W	39° 34.085' N
DP-04	121° 19.580' W	39° 33.695' N
DP-05	121° 17.741' W	39° 34.748' N
DP-06	121° 22.431' W	39° 34.156' N
DP-07	121° 19.121' W	39° 35.130' N
DP-08	121° 18.869' W	39° 34.338' N
DP-09	121° 19.829' W	39° 35.393' N
DP-20	121° 22.302' W	39° 36.547' N
Rockerfeller Staging	121° 22.384' W	39° 37.278' N
Enterprise Staging	121° 21.228' W	39° 32.512' N
Safety Zone - Div N	121° 22.353' W	39° 33.817' N
Safety Zone - Div T	121° 19.833' W	39° 35.507' N
Safety Zone - Div W	121° 19.540' W	39° 34.916' N
Falls Helispot	121° 15.629' W	39° 35.507' N

D. Jukkola NTF GIS  
 Aug 6, 2008 2148 hrs