

121°28'W

121°27'W

121°26'W

121°25'W

121°24'W

121°23'W

121°22'W

39°37'N

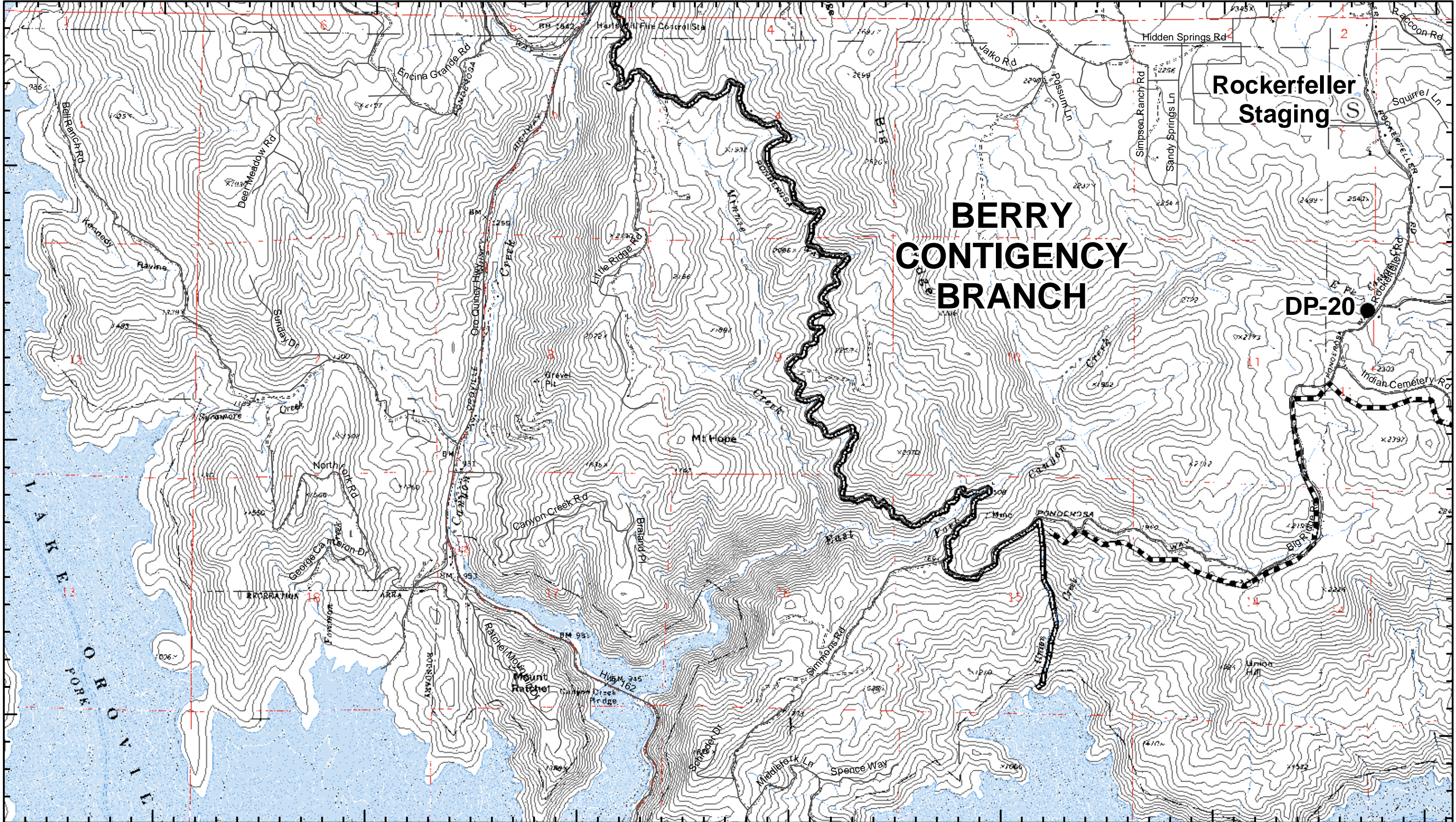
39°36'N

39°35'N

39°37'N

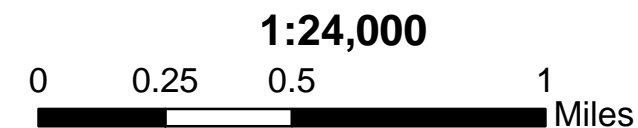
39°36'N

39°35'N



	Main Route		Staging Area		Uncontrolled Fire Edge
	Road		Drop Point		Completed Line
	Berry Immediate Threat		Helispot		Completed Dozer Line
	6-hr Decision Line		Spot Fire		Planned Secondary Line
	Berry Contingency Branch Boundary		Safety Zone		Life Hazard

CRAIG INCIDENT
CABTU 009593
 August 7, 2008
 Perimeter as of 8/06/08 2000 Hours



M.T. August 6, 2008 2200 Hours
 Teale Albers NAD 1927

5
IAP PAGE 1