

121°28'W

121°27'W

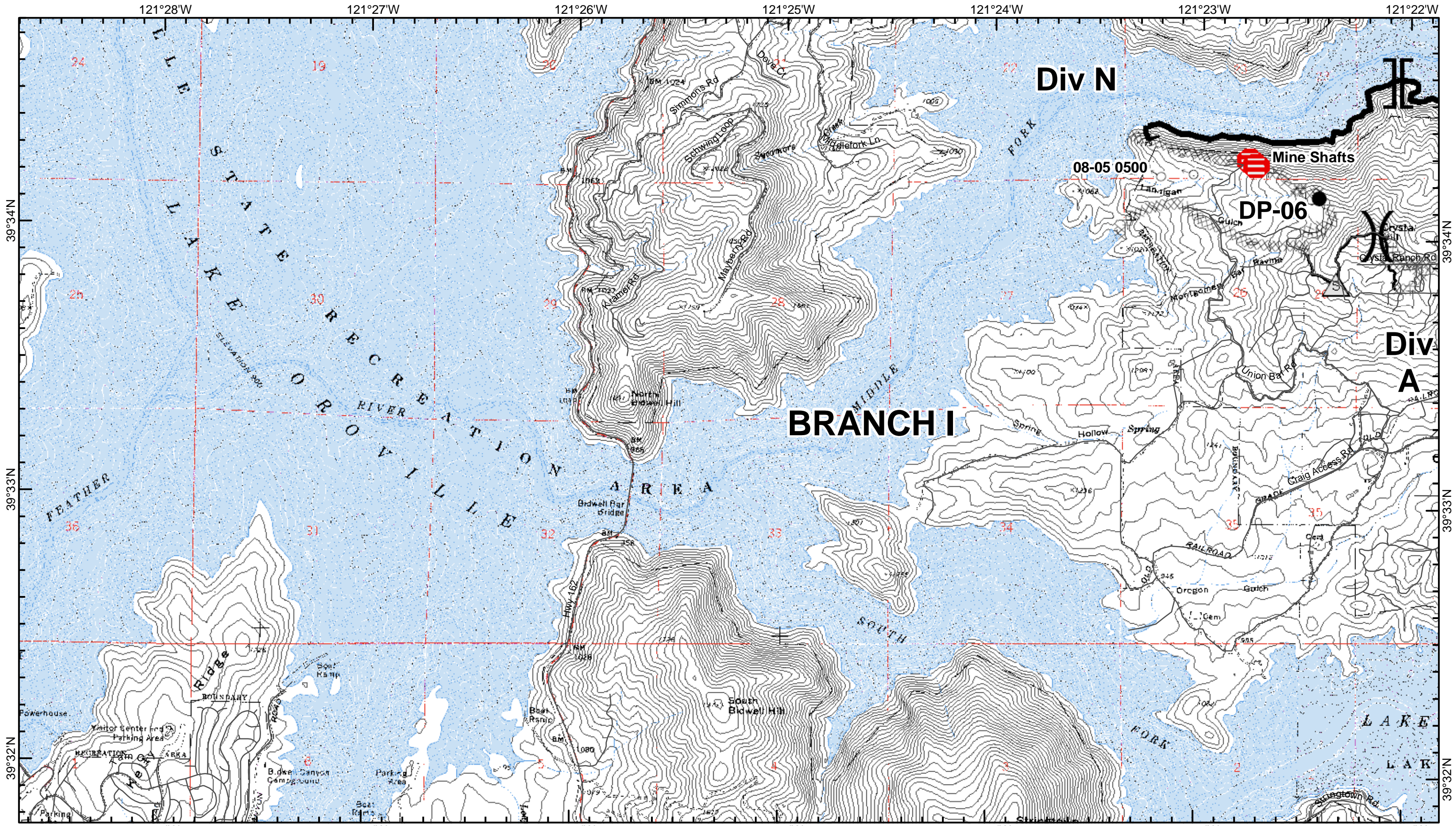
121°26'W

121°25'W

121°24'W

121°23'W

121°22'W



39°34'N

39°33'N

39°32'N

39°34'N

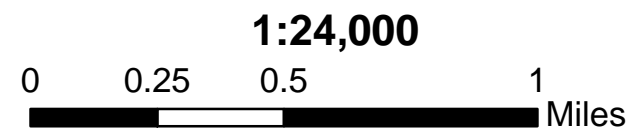
39°33'N

39°32'N



	Main Route		Staging Area		Uncontrolled Fire Edge
	Road		Drop Point		Completed Line
	Berry Immediate Threat 6-hr Decision Line		Helispot		Completed Dozer Line
	Berry Contingency		Spot Fire		Planned Secondary Line
	Branch Boundary		Safety Zone		Life Hazard

**CRAIG INCIDENT**  
**CABTU 009593**  
**August 7, 2008**  
**Perimeter as of 8/06/08 2000 Hours**



*M.T. August 6, 2008 2200 Hours*  
*Teale Albers NAD 1927*

**5**  
**IAP PAGE 3**