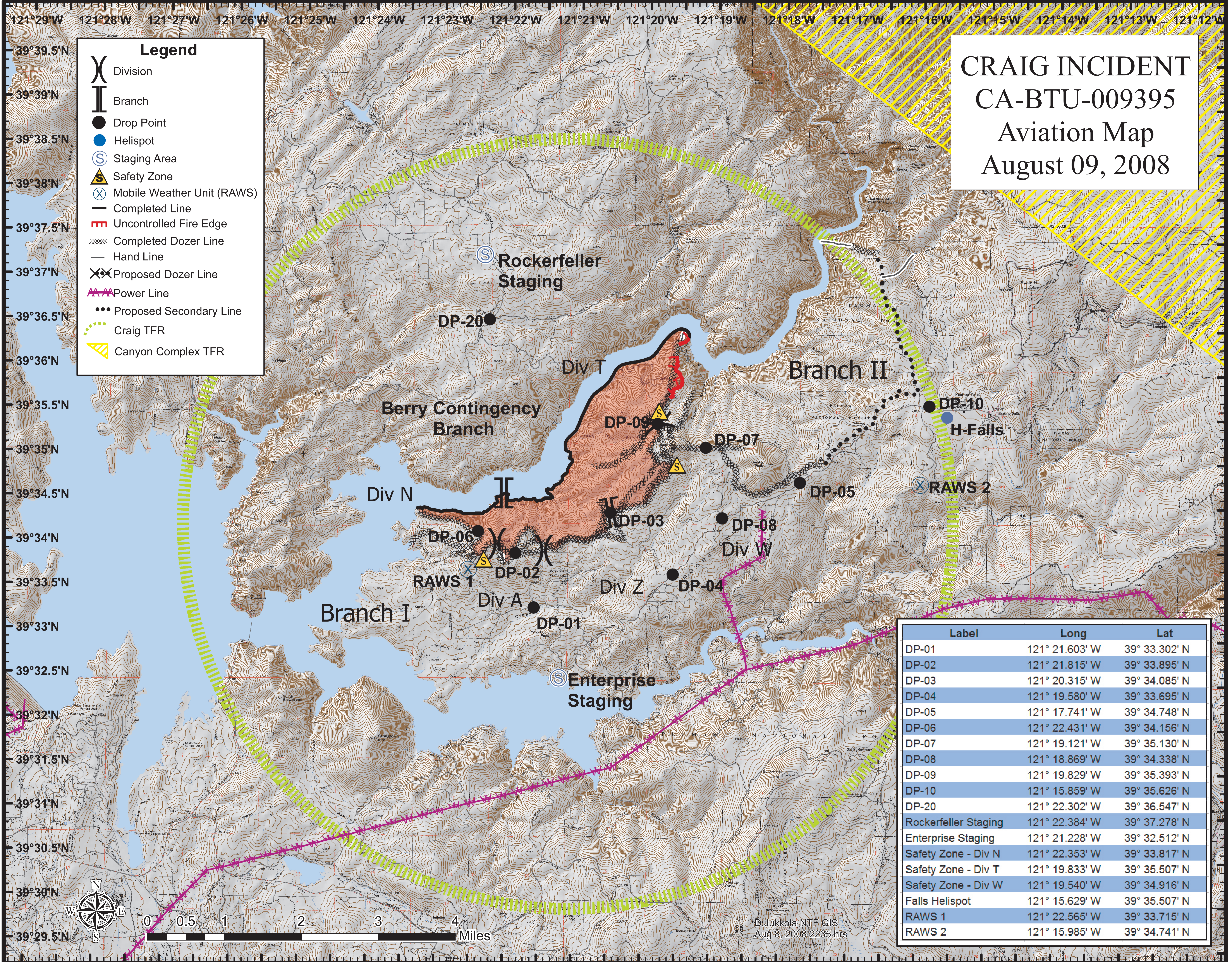


# CRAIG INCIDENT CA-BTU-009395 Aviation Map August 09, 2008

- Legend**
- (X) Division
  - I Branch
  - Drop Point
  - Helispot
  - (S) Staging Area
  - ▲ Safety Zone
  - (X) Mobile Weather Unit (RAWS)
  - Completed Line
  - ▬ Uncontrolled Fire Edge
  - xxxxx Completed Dozer Line
  - Hand Line
  - XX Proposed Dozer Line
  - AAA Power Line
  - Proposed Secondary Line
  - ▬ Craig TFR
  - ▨ Canyon Complex TFR



Label	Long	Lat
DP-01	121° 21.603' W	39° 33.302' N
DP-02	121° 21.815' W	39° 33.895' N
DP-03	121° 20.315' W	39° 34.085' N
DP-04	121° 19.580' W	39° 33.695' N
DP-05	121° 17.741' W	39° 34.748' N
DP-06	121° 22.431' W	39° 34.156' N
DP-07	121° 19.121' W	39° 35.130' N
DP-08	121° 18.869' W	39° 34.338' N
DP-09	121° 19.829' W	39° 35.393' N
DP-10	121° 15.859' W	39° 35.626' N
DP-20	121° 22.302' W	39° 36.547' N
Rockerfeller Staging	121° 22.384' W	39° 37.278' N
Enterprise Staging	121° 21.228' W	39° 32.512' N
Safety Zone - Div N	121° 22.353' W	39° 33.817' N
Safety Zone - Div T	121° 19.833' W	39° 35.507' N
Safety Zone - Div W	121° 19.540' W	39° 34.916' N
Falls Helispot	121° 15.629' W	39° 35.507' N
RAWS 1	121° 22.565' W	39° 33.715' N
RAWS 2	121° 15.985' W	39° 34.741' N

D. Jukkola NTF GIS  
Aug 8, 2008 2235 hrs