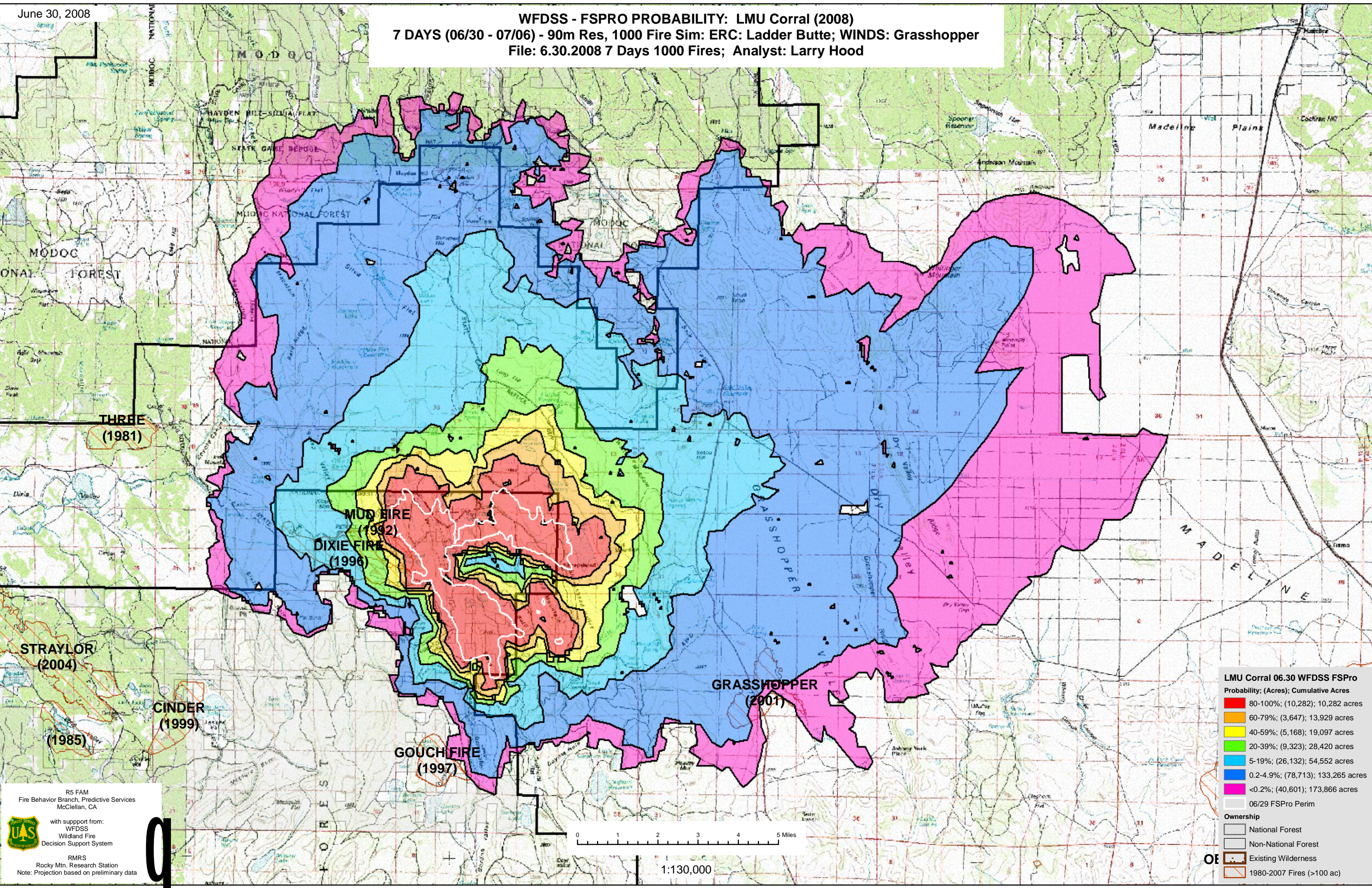


WFDSS - FSPRO PROBABILITY: LMU Corral (2008)

7 DAYS (06/30 - 07/06) - 90m Res, 1000 Fire Sim: ERC: Ladder Butte; WINDS: Grasshopper
File: 6.30.2008 7 Days 1000 Fires; Analyst: Larry Hood



LMU Corral 06.30 WFDSS FSPRO
Probability; (Acres); Cumulative Acres

- 80-100%; (10,282); 10,282 acres
- 60-79%; (3,647); 13,929 acres
- 40-59%; (5,168); 19,097 acres
- 20-39%; (9,323); 28,420 acres
- 5-19%; (26,132); 54,552 acres
- 0.2-4.9%; (78,713); 133,265 acres
- <0.2%; (40,601); 173,866 acres

06/29 FSPRO Perim

Ownership

- National Forest
- Non-National Forest

OE

- Existing Wilderness
- 1980-2007 Fires (>100 ac)

R5 FAM
Fire Behavior Branch, Predictive Services
McClellan, CA

with support from:
WFDSS
Wildland Fire
Decision Support System

RMRS
Rocky Mtn. Research Station
Note: Projection based on preliminary data

