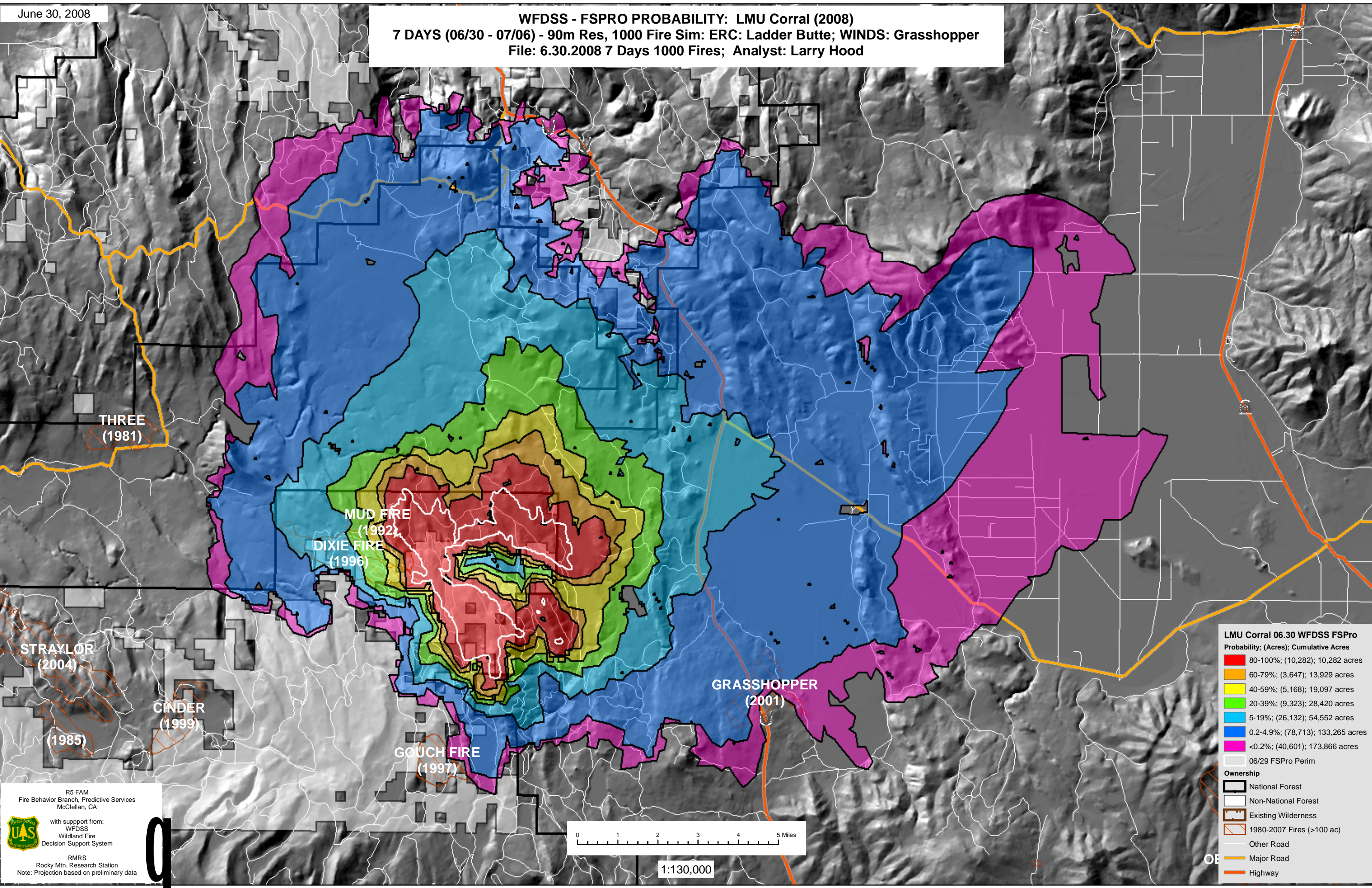


June 30, 2008

WFDSS - FSPRO PROBABILITY: LMU Corral (2008)
7 DAYS (06/30 - 07/06) - 90m Res, 1000 Fire Sim: ERC: Ladder Butte; WINDS: Grasshopper
 File: 6.30.2008 7 Days 1000 Fires; Analyst: Larry Hood



LMU Corral 06.30 WFDSS FSPRO

Probability; (Acres); Cumulative Acres

- 80-100%; (10,282); 10,282 acres
- 60-79%; (3,647); 13,929 acres
- 40-59%; (5,168); 19,097 acres
- 20-39%; (9,323); 28,420 acres
- 5-19%; (26,132); 54,552 acres
- 0.2-4.9%; (78,713); 133,265 acres
- <0.2%; (40,601); 173,866 acres

Ownership

- National Forest
- Non-National Forest
- Existing Wilderness
- 1980-2007 Fires (>100 ac)
- Other Road
- Major Road
- Highway

06/29 FSPRO Perim



1:130,000

R5 FAM
 Fire Behavior Branch, Predictive Services
 McClellan, CA

with support from:
 WFDSS
 Wildland Fire
 Decision Support System

RMRS
 Rocky Mtn. Research Station
 Note: Projection based on preliminary data

THREE (1981)

STRAYLOR (2004)

(1985)

CINDER (1999)

MUD FIRE (1992)
 DIXIE FIRE (1996)

GOUCH FIRE (1997)

GRASSHOPPER (2001)