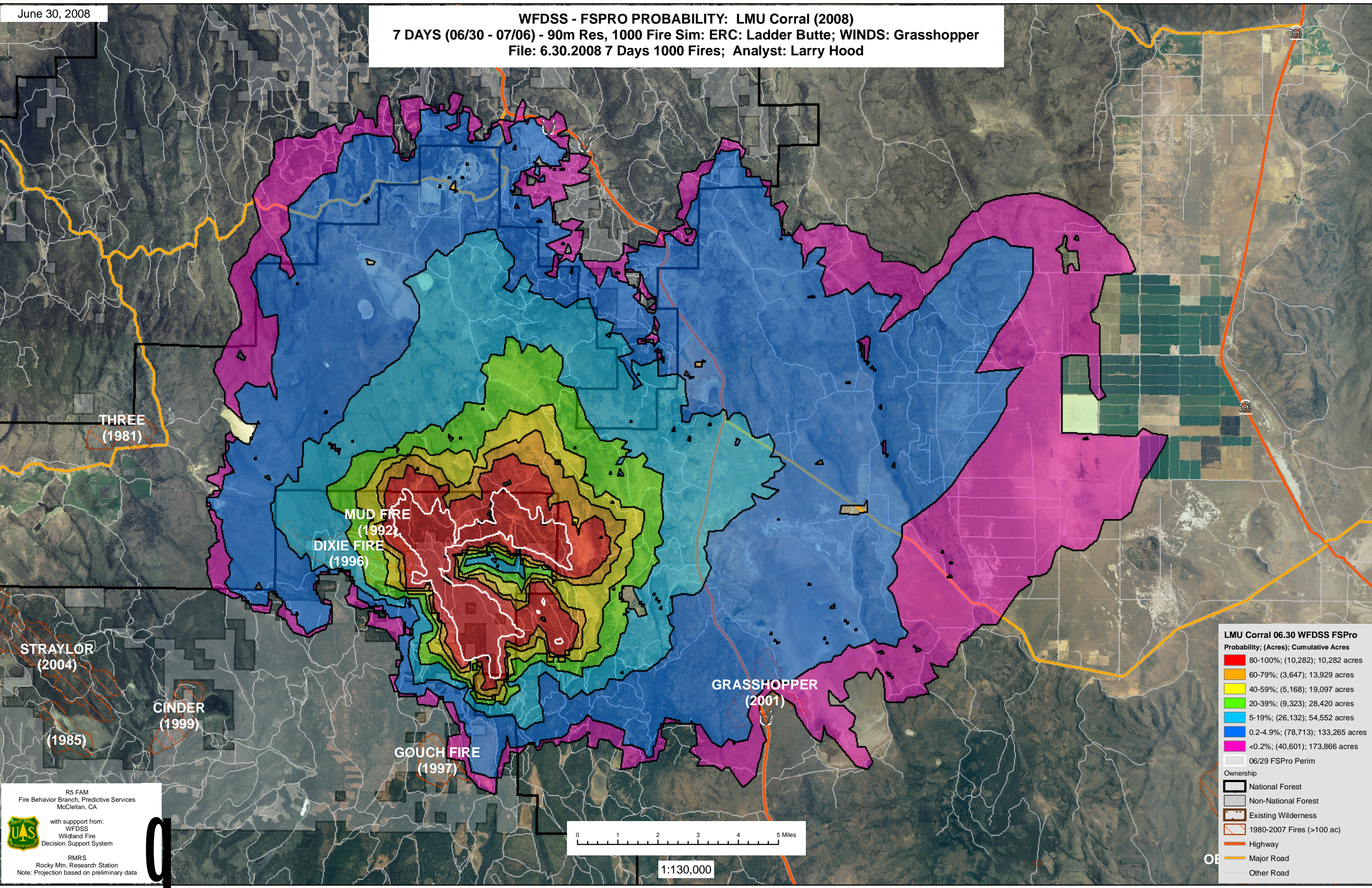


WFDSS - FSPRO PROBABILITY: LMU Corral (2008)  
7 DAYS (06/30 - 07/06) - 90m Res, 1000 Fire Sim: ERC: Ladder Butte; WINDS: Grasshopper  
File: 6.30.2008 7 Days 1000 Fires; Analyst: Larry Hood



**LMU Corral 06.30 WFDSS FSPro**  
Probability; (Acres); Cumulative Acres

80-100%	(10,282)	10,282 acres
60-79%	(3,647)	13,929 acres
40-59%	(5,168)	19,097 acres
20-39%	(9,323)	28,420 acres
5-19%	(26,132)	54,552 acres
0.2-4.9%	(78,713)	133,265 acres
<0.2%	(40,601)	173,866 acres

06/29 FSPro Perim

Ownership

- National Forest
- Non-National Forest
- Existing Wilderness
- 1980-2007 Fires (>100 ac)

Highway

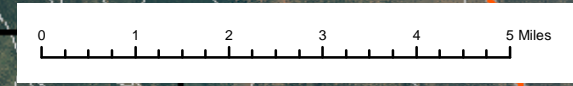
Major Road

Other Road

R5 FAM  
Fire Behavior Branch, Predictive Services  
McClellan, CA

with support from:  
WFDSS  
Wildland Fire  
Decision Support System

RMRS  
Rocky Mtn. Research Station  
Note: Projection based on preliminary data



1:130,000