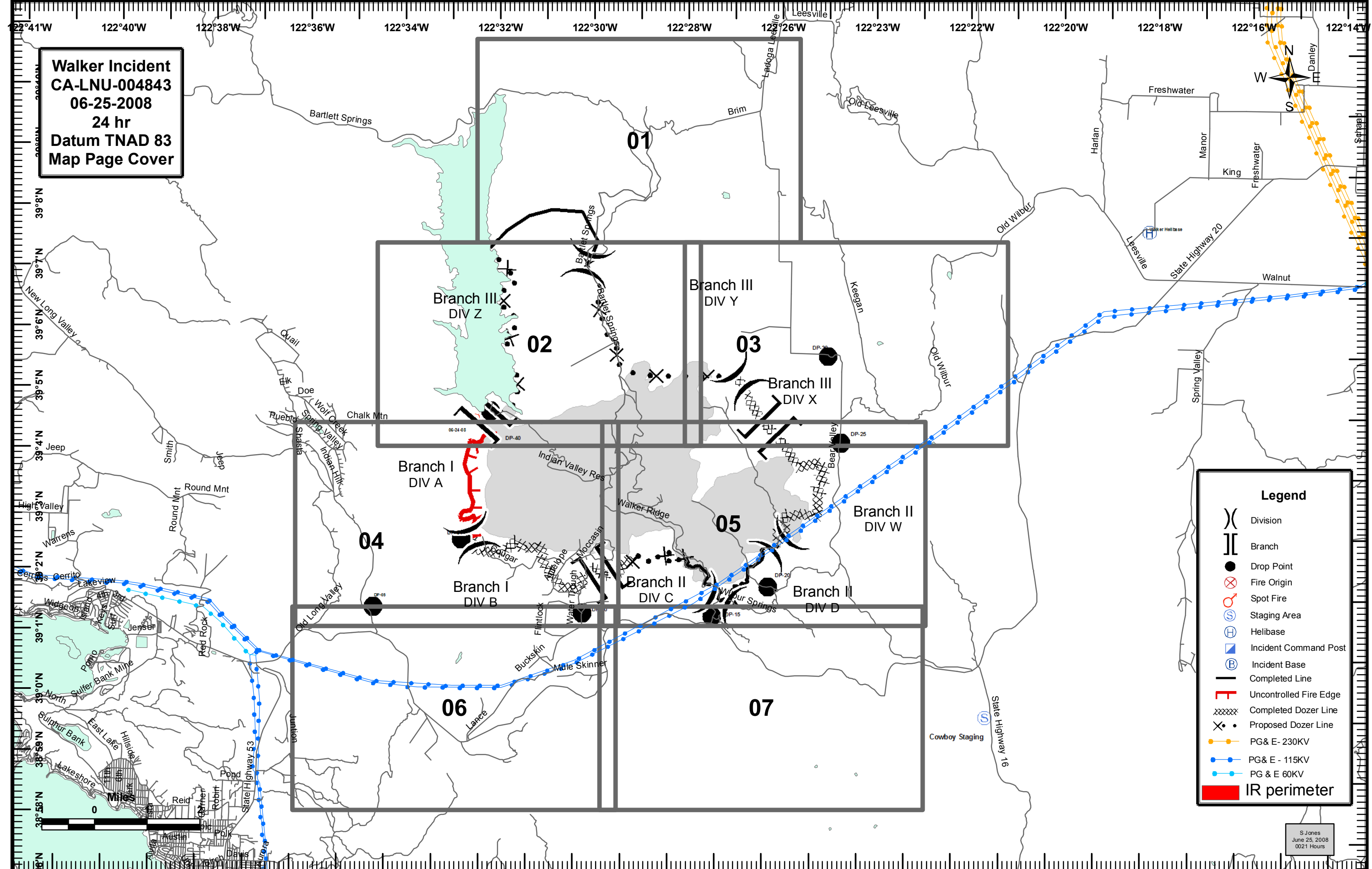


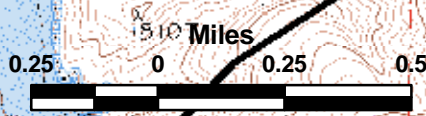
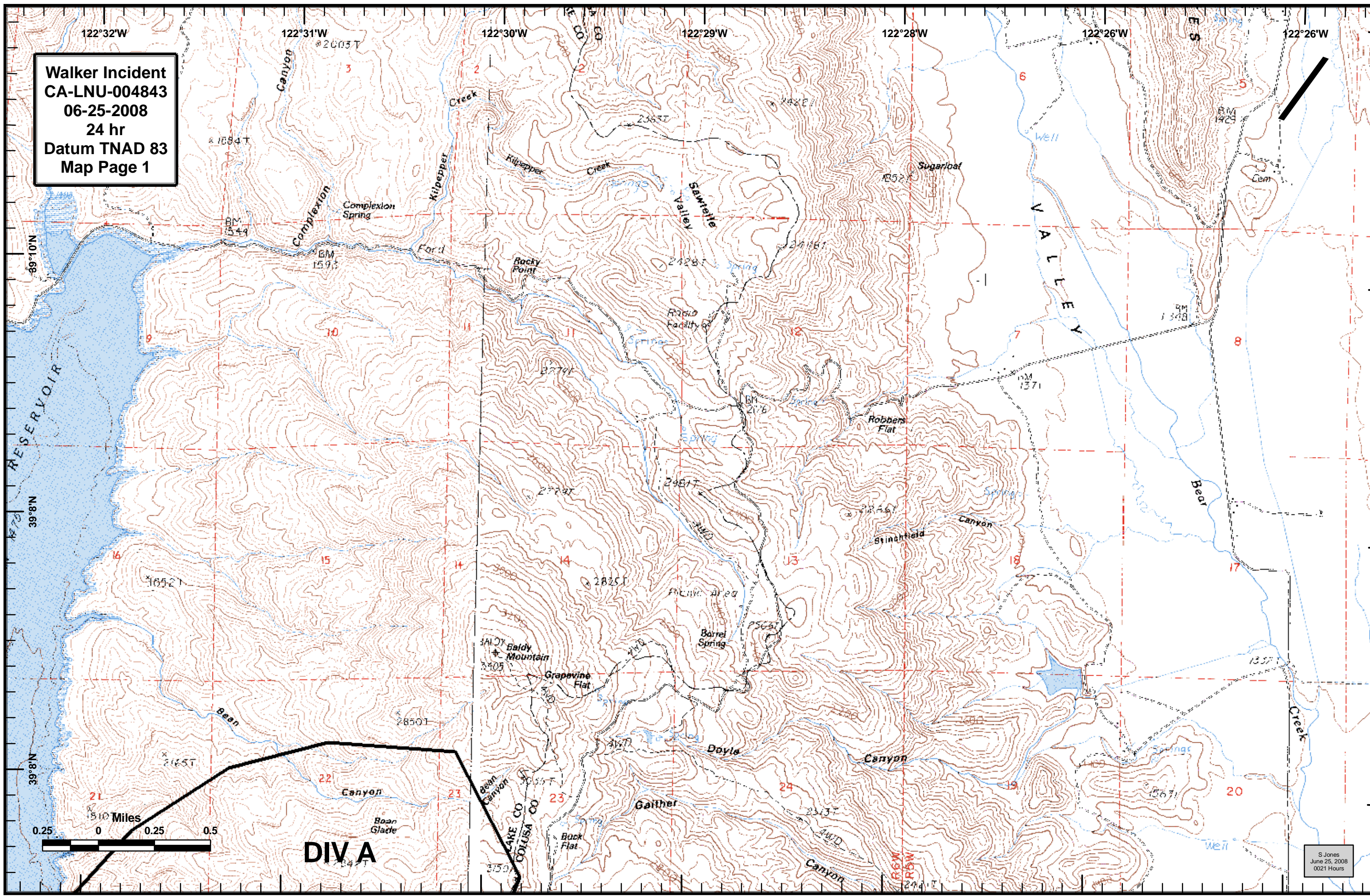
Walker Incident
CA-LNU-004843
06-25-2008
24 hr
Datum TNAD 83
Map Page Cover



Legend

- (X) Division
- || Branch
- Drop Point
- ⊗ Fire Origin
- ⊕ Spot Fire
- Ⓢ Staging Area
- Ⓜ Helibase
- Ⓜ Incident Command Post
- Ⓜ Incident Base
- Completed Line
- ┌ Uncontrolled Fire Edge
- xxxxx Completed Dozer Line
- ⊗ Proposed Dozer Line
- PG & E - 230KV
- PG & E - 115KV
- PG & E 60KV
- IR perimeter

Walker Incident
CA-LNU-004843
06-25-2008
24 hr
Datum TNAD 83
Map Page 1



DIV A

S Jones
June 25, 2008
0021 Hours

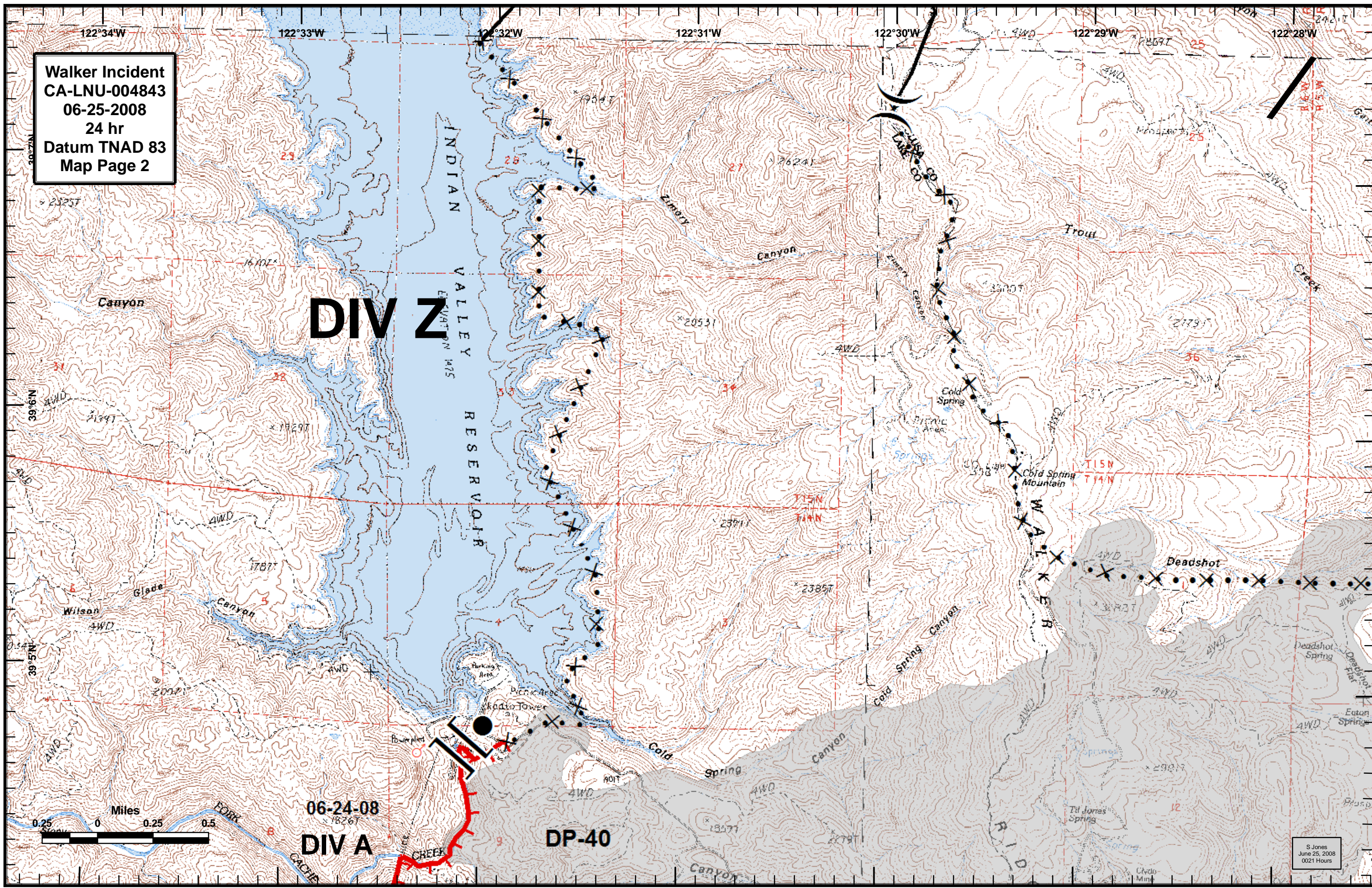
Walker Incident
CA-LNU-004843
06-25-2008
24 hr
Datum TNAD 83
Map Page 2

DIV Z

06-24-08
DIV A

DP-40

S Jones
June 25, 2008
0021 Hours



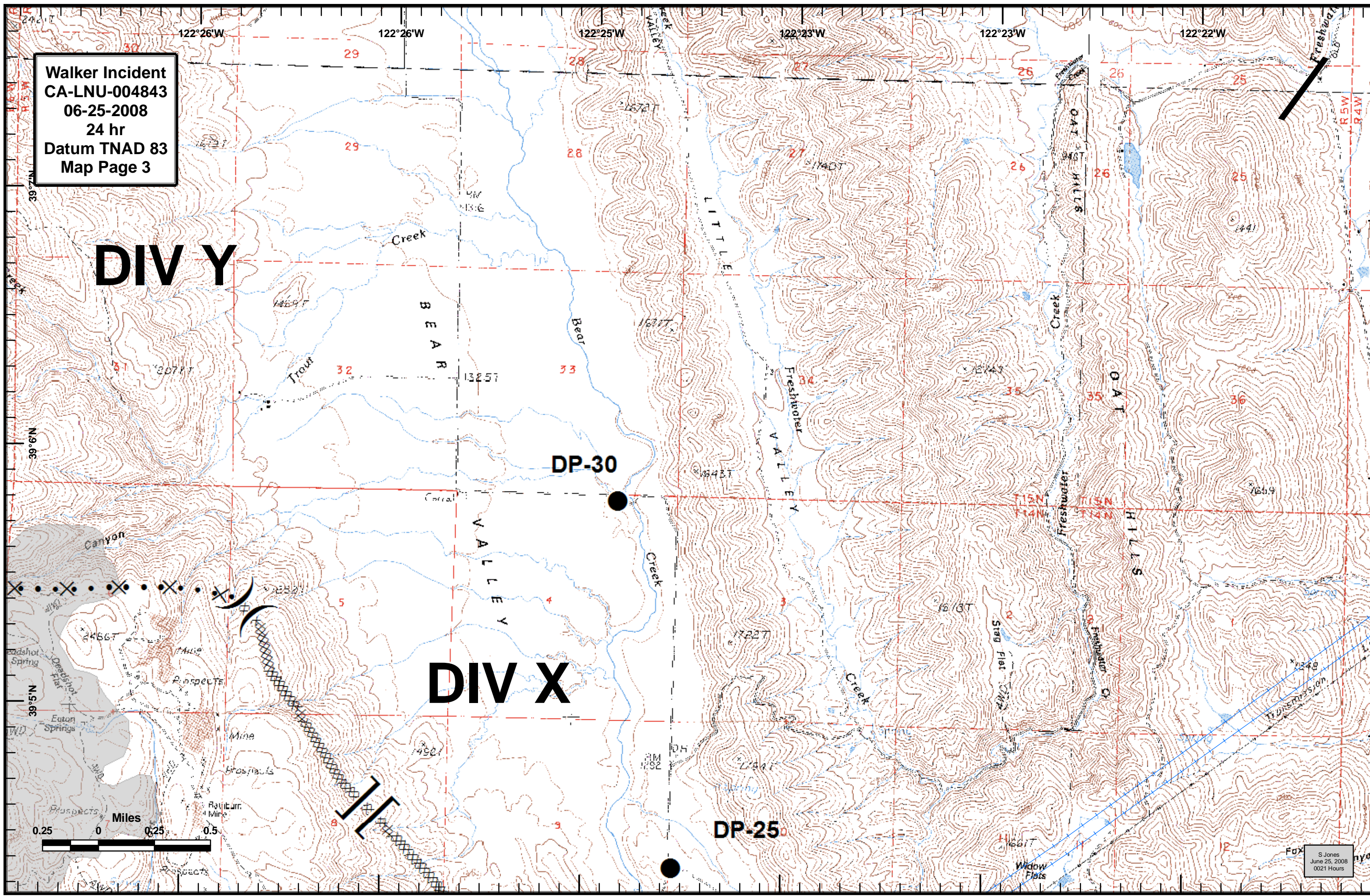
Walker Incident
CA-LNU-004843
06-25-2008
24 hr
Datum TNAD 83
Map Page 3

DIV Y

DIV X

DP-30

DP-25



Walker Incident
CA-LNU-004843
06-25-2008
24 hr
Datum TNAD 83
Map Page 4

DIV A

DIV B

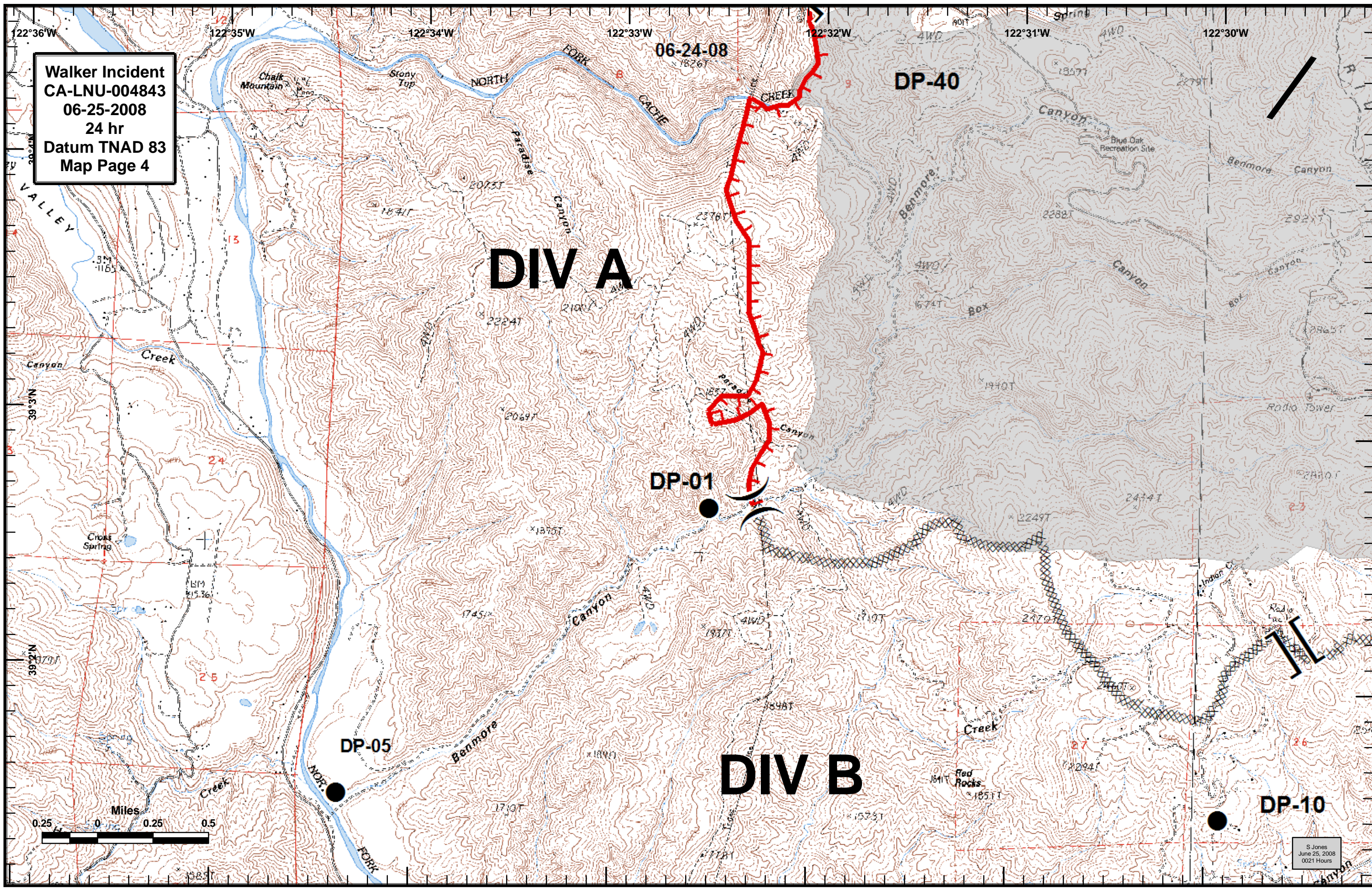
DP-01

DP-05

DP-40

DP-10

06-24-08



Walker Incident
CA-LNU-004843
06-25-2008
24 hr
Datum TNAD 83
Map Page 5

DP-25

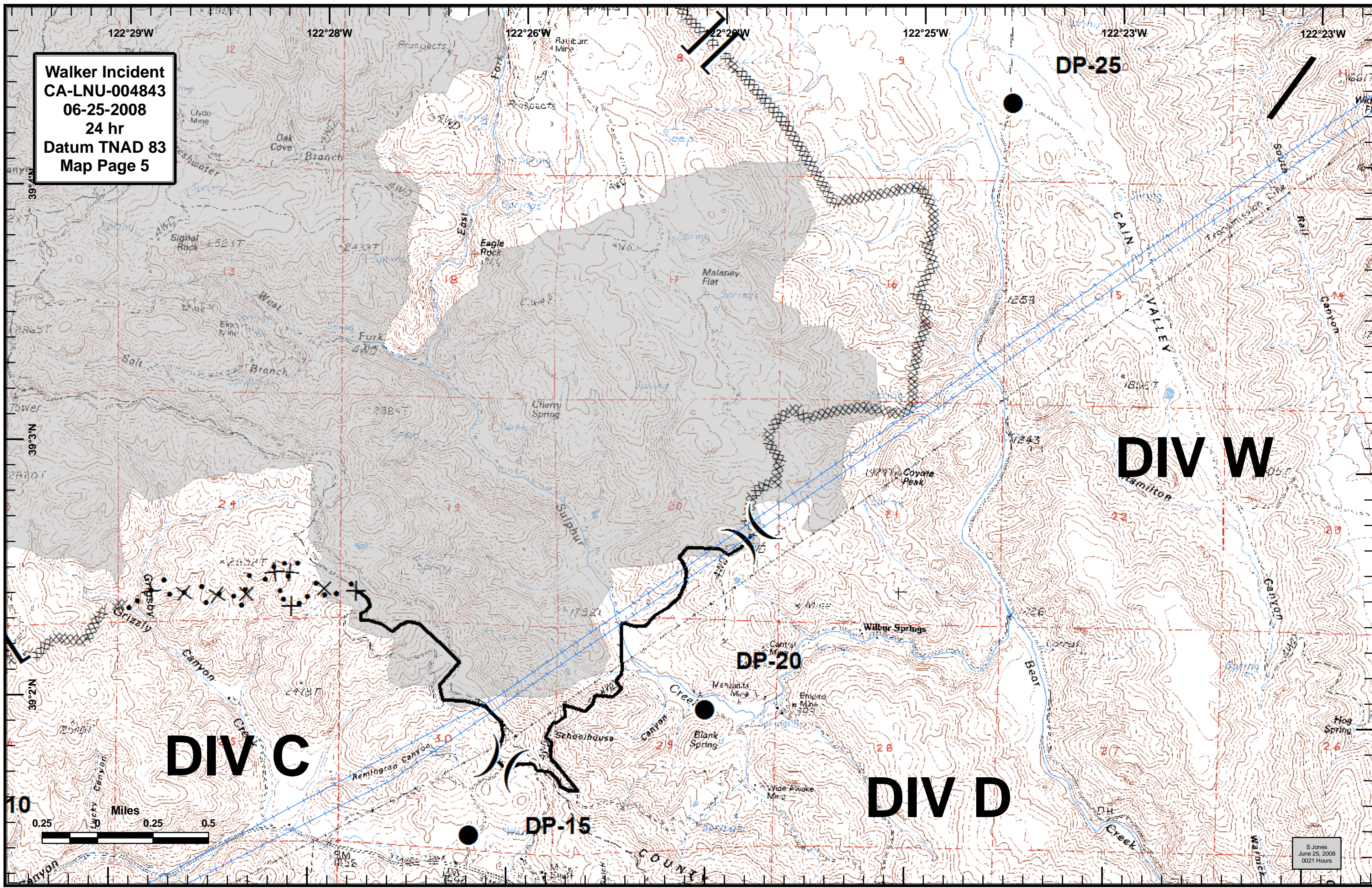
DIV W

DP-20

DIV C

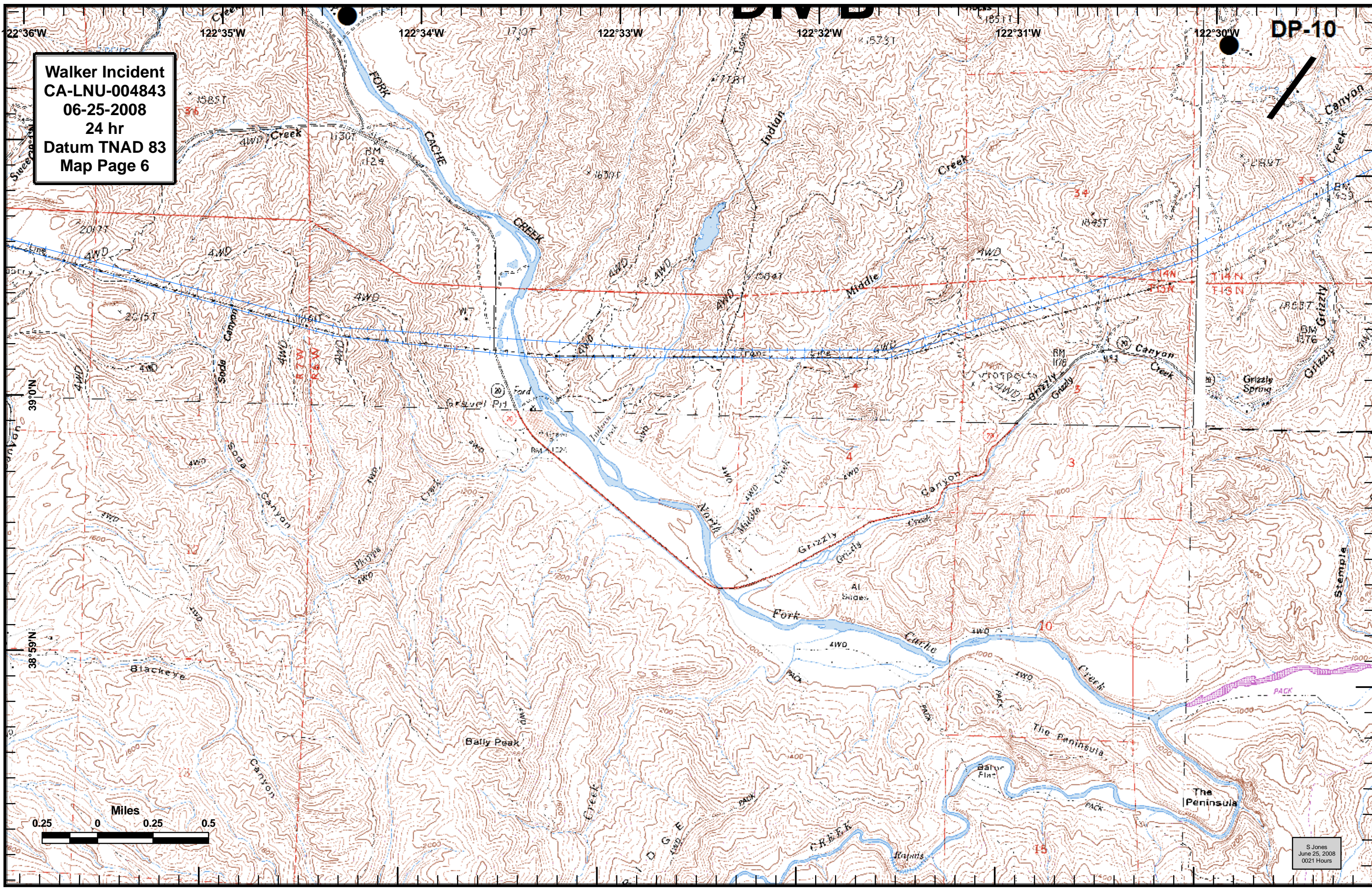
DIV D

DP-15

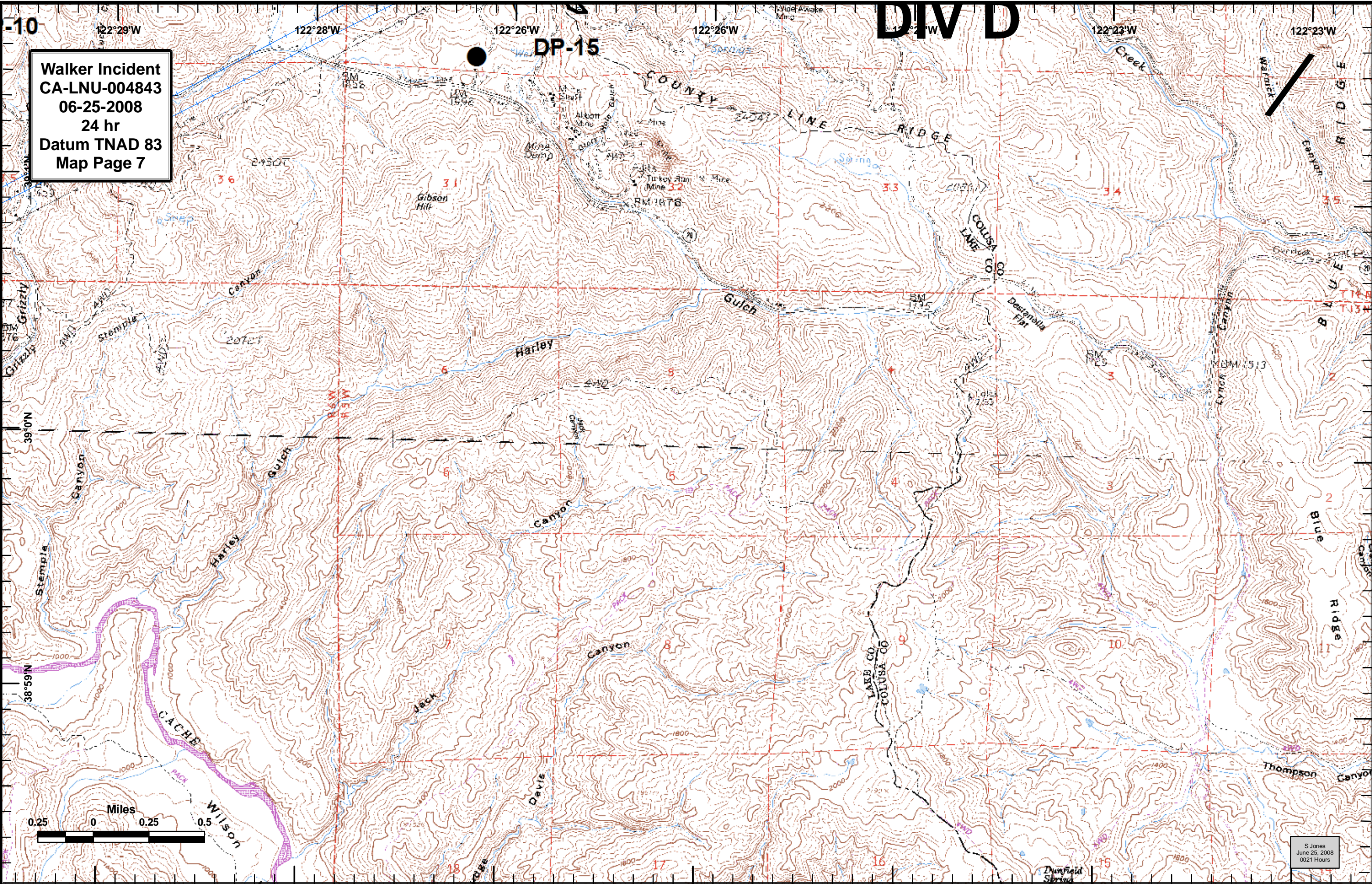


Walker Incident
CA-LNU-004843
06-25-2008
24 hr
Datum TNAD 83
Map Page 6

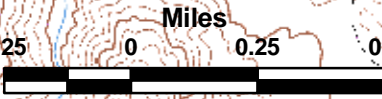
DP-10



S Jones
June 25, 2008
0021 Hours



Walker Incident
CA-LNU-004843
06-25-2008
24 hr
Datum TNAD 83
Map Page 7



S Jones
June 25, 2008
0021 Hours