

# MEU LIGHTNING COMPLEX

*CAMEU004608*



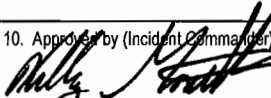
## INCIDENT ACTION PLAN

*OPERATIONAL PERIOD*

*July 16 -17, 2008*

*0700 - 0700*



<b>INCIDENT OBJECTIVES</b>	1. Incident Name <b>MEU LIGHTNING COMPLEX</b>	2. Date <b>7/15/2008</b>	3. Time <b>1600</b>
4. Operational Period <b>7/16/08-7/17/08 0700-0700</b>			
<p>5. General Control Objectives for the Incident (include alternatives)</p> <p><b>MANAGEMENT OBJECTIVES:</b></p> <ol style="list-style-type: none"> <li>1) Health and Safety - provide adequate rest cycles.</li> <li>2) Provide for protection of life and property.</li> <li>3) Prioritize and staff existing fires.</li> <li>4) Locate, prioritize and staff new fires.</li> <li>5) Maintain accurate resource tracking and fiscal accountability.</li> <li>6) Provide timely, accurate information to the public, media, and public officials.</li> </ol> <p><b>CONTROL OBJECTIVES:</b></p> <ol style="list-style-type: none"> <li>1) Implement perimeter control and extinguishment of all fires.</li> <li>2) Mop-up and patrol 300' inside control lines.</li> <li>3) Provide intelligence and resources and logistical support to all Branches.</li> </ol>			
<p>6. Weather Forecast for Period</p> <p><b>See Weather Forecast.</b></p>			
<p>7. General Safety Message</p> <ol style="list-style-type: none"> <li>1) Be aware of heat related injuries.</li> <li>2) Review and follow LCES, situations that shout watch out, and the 10 standard fire orders.</li> <li>3) Watch for rolling and falling material.</li> </ol>			
8. Attachments (mark if attached)			
<input checked="" type="checkbox"/> Organization List - ICS 203	<input checked="" type="checkbox"/> Safety Message	<input checked="" type="checkbox"/> Archaeology	
<input checked="" type="checkbox"/> Div. Assignment Lists - ICS 204	<input checked="" type="checkbox"/> Weather	<input checked="" type="checkbox"/> Fire Suppression Repair	
<input checked="" type="checkbox"/> Air Operations (ICS 220)	<input checked="" type="checkbox"/> FBAN report	<input checked="" type="checkbox"/> Vendor Evaluation	
<input checked="" type="checkbox"/> Communications Plan - ICS 205	<input checked="" type="checkbox"/> Phone List	<input checked="" type="checkbox"/> Base/Camp Maps	
<input checked="" type="checkbox"/> Medical Plan - ICS 206	<input checked="" type="checkbox"/> Hired Equipment Evaluations	<input checked="" type="checkbox"/> Travel Maps	
9. Prepared by (Planning Section Chief) <p style="text-align:center;">Pam Linstedt</p>		10. Approved by (Incident Commander)  Kelley Gouette	

<b>ORGANIZATION ASSIGNMENT LIST</b>			1. INCIDENT NAME	2. DATE PREPARED	3. TIME PREPARED
<b>ICS 203</b>			<b>MEU Lightning Complex</b>	7/15/08	1600
5. INCIDENT COMMANDER AND STAFF			4. OPERATIONAL PERIOD (DATE/TIME)		
			<b>07/16/08 – 07/17/08 0700-0700</b>		
POSITION NAME			9. OPERATIONS SECTION		
INCIDENT COMMANDER	<b>Kelley Gouette</b>	<b>530-949-6059</b>	CHIEF	<b>Jeff Brand</b>	<b>530-277-2311</b>
DEPUTY			Northern Operations	<b>Ed Locke</b>	<b>530-510-3175</b>
SAFETY OFFICER	<b>John King</b>	<b>209-419-4404</b>	Southern Operations	<b>Robert Rodello</b>	<b>707-499-2245</b>
INFORMATION OFFICER	<b>Mike Carr</b>	<b>925-872-8545</b>	Planning/OPS	<b>Tena Anderson</b>	<b>707-889-4229</b>
LIAISON OFFICER	<b>Steve Gasaway</b>	<b>530-598-2603</b>	Night Operations	<b>Randy Smith</b>	<b>530-277-2303</b>
			a. BRANCH I/II		
6. AGENCY REPRESENTATIVES			BRANCH DIRECTOR	<b>Darrell Wolf</b>	
AGENCY	NAME				
Op. Area Fire	<b>Dan Grebil</b>	<b>707-489-3136</b>			
Timber Rep.	<b>Bruce Strickler</b>	<b>707-391-6707</b>	b. BRANCH III		
CNG	<b>Dan Burns</b>	<b>530-339-0624</b>	BRANCH DIRECTOR	<b>Jim Barry</b>	
Cal Fire	<b>Ted Enberg</b>	<b>707-391-6701</b>			
BLM	<b>Tim Jones</b>	<b>707-498-7263</b>			
CHP	<b>R. Madrigal</b>	<b>707-467-4000</b>	c. BRANCH IV		
Mendocino Sheriff	<b>Tim Marsh</b>	<b>707-489-3901</b>	BRANCH DIRECTOR	<b>David Barsi</b>	
CDCR	<b>Randy Sherer</b>	<b>707-964-3716</b>			
State Parks	<b>Morgan Zeiter</b>	<b>916-358-1300</b>			
CCC	<b>Hector Garcia</b>	<b>805-200-7340</b>	d. BRANCH V		
Canada	<b>Cy McConnell</b>	<b>250-342-5216</b>	BRANCH DIRECTOR	<b>Erich Schwab</b>	
OES	<b>Brian Woodbeck</b>	<b>951-830-6231</b>			
BIA	<b>Josh Simons</b>	<b>916-207-7223</b>			
7. PLANNING SECTION					
CHIEF	<b>Pam Linstedt</b>	<b>707-391-6741</b>	e. BRANCH VI		
DEPUTY	<b>Ron Alves</b>	<b>707-799-2940</b>	BRANCH DIRECTOR	<b>Norm Brown</b>	
RESOURCES UNIT	<b>Tony Giacomini</b>	<b>707-477-3407</b>			
SITUATION UNIT	<b>Mark Tolbert</b>	<b>707-391-6713</b>			
DPRO	<b>Mike Mora</b>	<b>530-308-9058</b>	f. MILL CONTINGENCY GROUP		
DOCUMENTATION UNIT			Contingency Grp. Ldr.	<b>Tony Howard</b>	
DEMOBILIZATION UNIT	<b>Ted Tsudama</b>	<b>707-462-7455</b>			
TECHNICAL SPECIALISTS					
	IMET	<b>Jeff Tonkin</b>	<b>240-778-5316</b>	g. Fire Suppression Repair	
	Training	<b>Mark Romer</b>	<b>916-847-1199</b>	<b>Jeanette Pedersen</b>	
	GIS	<b>Elsa Hucks</b>	<b>530-277-2326</b>		
	FBAN	<b>Bill Baxter</b>	<b>707-391-5570</b>		
	HIRED EQUIP	<b>Rich Noonan</b>	<b>916-215-4007</b>	h. AIR OPERATIONS BRANCH	
	Archaeologist	<b>Chuck Whatford</b>	<b>707-529-7989</b>	AIR OPERATIONS BR. DIR.	<b>Chris Avina</b> <b>707-217-9278</b>
	Crews	<b>Nick Sandahl</b>	<b>707-529-3914</b>	AIR ATTACK SUPERVISOR	
				AIR SUPPORT SUPERVISOR	<b>Mark Gradek</b> <b>707-696-3579</b>
8. LOGISTICS SECTION			10. FINANCE/ADMINISTRATION SECTION		
CHIEF	<b>Mike Smith</b>	<b>530-310-1404</b>	CHIEF	<b>Deanna Lyman</b>	<b>209-256-2990</b>
ORDERING UNIT	<b>Jake Sjolund</b>	<b>707-462-7550</b>	TIME UNIT	<b>Leslie Marg</b>	<b>707-462-7352</b>
FACILITIES UNIT	<b>Breanna Buchanan</b>	<b>415-302-5568</b>	PROCUREMENT UNIT	<b>Suzie Blankenship</b>	<b>707-889-4190</b>
GROUND SUPPORT UNIT	<b>Jim Geib</b>	<b>707-484-2858</b>	COMPENSATION/CLAIMS	<b>Terri Accurso</b>	<b>530-277-2358</b>
Supply Unit	<b>Valarie Burke</b>	<b>707-391-6710</b>	COST UNIT	<b>Bart Kriek</b>	<b>530-200-2511</b>
COMMUNICATIONS UNIT	<b>Alan Knopp</b>	<b>707-889-4213</b>			
MEDICAL UNIT	<b>Robert Marshall</b>	<b>925-817-9940</b>			
MOTEL UNIT	<b>Ken Lowe</b>	<b>925-200-5812</b>			
<b>ICS 203</b>			PREPARED BY (RESOURCES UNIT) Tony Giacomini		

## FIRE WEATHER FORECAST #23

**NAME OF FIRE:** MEU Lightning  
**UNIT:** All Units  
**DATE AND TIME**  
**FORECAST ISSUED:** 15 July 2008 1800 PDT

**PREDICTION FOR:** Day and Night shift  
**SHIFT DATE:** 16 July Wednesday  
**SIGNED:** Jeff Tonkin **IMET**

**MEU Complex WEATHER DISCUSSION:** Upper trough will move east of the fire area today. Although the marine layer remains fairly deep it should retreat faster to the coast...allowing slightly lower min rh's and slightly higher temps for the coastal fires today. Similar changes are expected across the eastern interior fires too as the marine air will not influence the area nearly as well as it did on Tuesday.

<p><b>Branch 1-2, 3 Today (Wed)</b>  <u>Covelo, Yellow, Big &amp; Mill Areas</u>  <u>Sky / Weather:</u> Sunny  <u>Max Temps:</u> 93 to 100  <u>Min RH:</u> 13 to 19%  <u>Wind</u>  <u>Slope Valley:</u> Northwest or Upslope 4 to 8 G13  <u>Ridge:</u> West or Northwest 4 to 8 G 13 afternoon</p>	<p><b>Tonight (Wed Night)</b>  <u>Covelo, Yellow, Big &amp; Mill Areas</u>  <u>Sky / Weather:</u> Clear  <u>Min Temps:</u> 58 - 63  <u>Max RH:</u> 50 - 55...near 70% in drainages.  <u>Wind</u>  <u>Slope Valley:</u> East or Downslope 1- 3 mph.  <u>Ridge:</u> East 1 to 3 mph.</p>
<p><b>Branch 4: Interior, 5 &amp; 6 Today (Wed)</b>  <u>Lost Pipe and Sugarloaf Areas</u>  <u>Sky / Weather:</u> Fog / Low clouds early, Sun by 1000.  <u>Max Temps:</u> 76 to 82  <u>Min RH:</u> 31 to 38%...20% Br. 4 interior  <u>Wind</u>  <u>Slope Valley:</u> W or upslope 5 to 10 G 15 afternoon  <u>Ridges:</u> West or Northwest 4 to 8 G 13 afternoon</p>	<p><b>Tonight (Wed Night)</b>  <u>Lost Pipe and Sugarloaf Areas</u>  <u>Sky/Weather:</u> Low clouds fog.  <u>Min Temps:</u> 62-70...50-55 Drainage  <u>Max RH:</u> 68-74%...near 100% Drainage.  <u>Wind</u>  <u>Slope Valley:</u> East or Downslope 1-3 mph.  <u>Ridges:</u> West 2 to 4 mph.</p>
<p><b>Branch 6: <u>Hardy Area</u> Today (Wed)</b>  <u>Sky / Weather:</u> / Low clouds early, Sun by 1100.  <u>Max Temps:</u> 66 - 73  <u>Min RH:</u> 55-65%  <u>Wind</u>  <u>Slope Valley:</u> West 4 to 8 mph...gust 15 afternoon  <u>Ridges:</u> NorthWest 4 to 8 mph...gust 15 afternoon.</p>	<p><b><u>Hardy Area</u> Tonight (Wed Night)</b>  <u>Sky/Weather...</u> fog and low clouds overnight.  <u>Min Temps:</u> 53 to 58.  <u>Max RH:</u> 75-85%...100% in drainage.  <u>Wind</u>  <u>Slope Valley:</u> variable 1-2 mph.  <u>Ridges:</u> west 2 to 4 mph.</p>

**OUTLOOK FOR THURSDAY:** Little change in terms of temperature and relative humidity. Ridgetop winds West 4-8 mph with gusts to 15 mph in the afternoon. Slope/Valley winds: West or Upslope 3-5 mph with gusts to 10 mph. Maximum temperatures 75-83 coast and 90-97 inland. Minimum humidity 39-44% coast fires and 17-23% inland.

**EXTENDED OUTLOOK FOR FRIDAY AND SATURDAY:** Sunny...a general warming and drying trend. Max temps 77 to 84 coast...near 100 inland. Min humidity 25-32% coast and 10-15% inland. West 4 to 8 mph...afternoon gusts 12 to 17 mph.

## FIRE BEHAVIOR FORECAST NO. 21

NAME OF FIRE: MEU Lightning Complex CA-MEU-4608 PREDICTION FOR: Day/Night Shift  
AGENCIES: CALFIRE, MEU FDs, SO, OES SHIFT DATE: 07/16/08 (Wednesday)  
TIME AND DATE ISSUED: 07/15/08 1900 Hours SIGNED: William Baxter, FBAN  
Jean Walters, FBAN trainee

**WEATHER SUMMARY:** Coastal low fog and cloud in the morning with clearing by 1000hrs

Coast Area: Day 80-84°F, 38% RH, Ridge winds West 3-7 Gusts 14, Slopes – upslope 2-5 mph;

Night – 52-59°F, 80% RH, Ridge Winds West 2-4, down slope 1-3 MPH.

East of 101: Day – 92-99°F, 15% RH, Ridge winds West 3-6 possible Gusts 12; Upslope/canyon 3-6 MPH.

Night – 60°F, 50% RH, Winds: Ridges West 1-2 Valleys down slope 1-3 MPH.

See detailed weather forecast issued 7/15/08 at 1900 hours.

**FIRE BEHAVIOR GENERAL:** No significant fire behavior has occurred over the past few days anywhere in the complex due to favorable weather conditions combined with successful suppression efforts, except for recently completed firing operations. Little change in weather is expected for Wednesday, July 16<sup>th</sup> and the trend of no significant fire behavior is expected to continue. Operations from this point on will be focusing on mop-up and patrolling. All large fuels remain critically dry and this will result in heat sources remaining hot until they are mopped up which could prove labor intensive in timber type fuels. Were expecting high RH's within the coastal drainages which should keep the probability of spotting low. The east half of the county will not be affected as much by the marine intrusion and so the probability of ignition should remain just above the threshold of significance. Any new fires will be topography and fuels driven and uphill runs with positive slope and good fuel continuity should be expected. Expect any new fires to run, torch and spot if eye level winds penetrate below canopy level with sustained wind speeds greater than 7 MPH.

### Fire Behavior - Optimal Alignment

Fuel Type	ROS (ft./min) Fwd.	ROS Flank	ROS Back	FL (ft.)	Spotting (ft.)	PI
Coast Timber FM 10	3-5	2	1 -rollout	1 - 4	590	40
Interior Timber/Oak	1-2	1	1 - rollout	1 - 2	675	67
Brush FM 5	18-22	5	2	2 - 6	675	67

**SPECIFIC:**

Coastal area – No significant fire behavior is anticipated. Expect good to excellent overnight RH recovery.

East side of the county – No significant fire behavior is anticipated. Expect fair overnight RH recovery in the 50% range.

**AVIATION OPERATIONS:** Coastal low fog will dissipate around 1000hrs and clearing skies will prevail for the remainder of the day.

**SAFETY:** The issues continue to be snags, stump holes and rolling materials. This is the most difficult period of the operation to maintain situational awareness. Footing may prove difficult when working some of the steep slopes in slash fuel types. Fuels remain extremely dry. LCES. It's not over until it's over and everyone comes home. Have a safe day.

**SAFETY MESSAGE**

INCIDENT NAME

MEU LIGHTNING

2. DATE PREPARED

7/15/08

3. TIME PREPARED

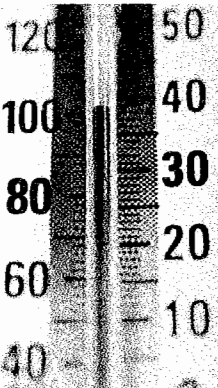
1600

4. OPERATIONAL PERIOD

07/16/2008

**LCES: Lookouts – Communications – Escape Routes – Safety Zones**

- WEAR YOUR PERSONAL PROTECTIVE EQUIPMENT DURING ALL OPERATIONS
  - EXCEPT WHEN SEEKING SHELTER FOR REST AND REHABILITATION
  - MOVE TO A SAFE AREA AND OPEN UP.



WATCH FOR WEAK OR DEAD TREES, KEEP EYES UP!

WATCH FOR STUMPHOLES, DOWNED LOGS LOOSENED BY FIRE

BE CAREFUL IN ROCKY AREAS FOR LOOSE / ROLLING ROCKS



**ROADS:**

BE ALERT ON NARROW DUSTY ROADS ESPECIALLY WHEN TIRED.

WATCH YOUR SPEED. WATER ROADS WHEN POSSIBLE.

FLAG HAZARDS WITH BLACK AND YELLOW TAPE AND ADVISE SUPERVISOR.

REMOVE FLAGGING THAT IS NO LONGER NEEDED.

**Brief your crews on all components of the IAP**

**SAFETY IS EVERYONE'S JOB, MAKE IT YOUR PRIORITY!**



PREPARED BY  
(SAFETY OFFICER) John King SOE1

**INCIDENT ACTION PLAN ANALYSIS**

1. INCIDENT NAME  
MEU Lightning Complex

2. OPERATIONAL PERIOD Date: 7/16 - 7/17/08  
Time: 0700 -0700

Branch	LCES* Analysis of Tactical Applications										Other Risk Analysis								
	Indirect Fireline	Downhill Fireline	Underslung Line	Mid-slope Line	Rollout / Snags	Anchor Points	Extreme Conditions (spotting, wind driven)	Reburn Potential	LCES MITIGATIONS			Hazardous Materials	Asbestos	Transportation > 1 hr+	Communications	Windshift	FF Fatigue	Poison Oak / Stings	Other Risk Mitigations
I/II	X	X	X	X	X		X	X					X	X	X	X	X	X	Complete rest cycles
III	X		X	X	X		X	X					X	X	X	X	X	X	Adjust travel routes
IV	X	X	X	X	X	X	X	X					X	X	X	X	X	X	Stay on Assigned Tac & Command Freq
V	X	X	X	X	X		X	X					X	X	X	X	X	X	Clean PPE / Decon
VI	X	X	X	X	X	X	X	X					X	X	X	X	X	X	Hydrate

Prepared by (Name and Position)  
John King, SOF1

Date Prepared: 7/15/2008

Time Prepared: 1600

# MEU NORTHERN OPERATIONS

<b>DIVISION ASSIGNMENT LIST</b>		1. Branch <b>I / II</b>		2. Division/Group <b>Covelo Patrol</b>			
3. Incident Name <b>MEU Lightning Complex</b>		4. Operational Period Date: <b>7/16/08-7/17/08</b> Time: <b>0700-0700</b>					
5. Operations Personnel							
Operations Chief		<b>Jeff Brand</b>		Northern Operations		<b>Ed Locke</b>	
Branch Director		<b>Darrell Wolf</b>		Air Attack Supervisor No.		<b>Chris Avina</b>	
6. Resources Assigned this Period							
Strike Team/Task Force/ Resource Designator	Leader	Number Persons	Trans. Needed	Drop Off PT./Time	Pick Up PT./Time	Check In	Check Out
<b>SOF</b>	<b>Lou Sciocchetti/Lenny Kempf</b>	<b>1</b>	<b>N</b>	<b>Laytonville Camp</b>	<b>Assigned to N. Ops.</b>		
ENG MEU 1178	Ryan Finn	5	N	Covelo Camp			
ENG MEU 1169	Welch	4	N	Covelo Camp			
ENG MT E-349 WHF	R. White	3	N	Covelo Camp			
ENG MT E-255 Wind 107	C. Schiefelbein	3	N	Covelo Camp			
ENG E-8005 C2C WF57	Gordon Reynaud	3	N	Covelo Camp			
ENG MT E-250 Red Devil 1	J. Jacobson	3	N	Covelo Camp			
ENG MT E-246 WFM S550	J. Billetec	3	N	Covelo Camp			
CRW NRD C-56 Tribal Crew 1	D. Fellis	16	N	Covelo Camp			
DOZ E-404 Morrison	Morrison	2	N	Covelo Camp			
W/T E-41 Fill-n-Mist	Misty Davison	2	N	Covelo Camp			
W/T CVL 5590	Baker	3	N	Covelo Camp			
7. Control Operations							
<p><b>Patrol Pork and Murphy incidents. Henthorn Spike to prep Henthorn Wilderness Camp.</b></p> <p><b>Walk contained fires as assigned and mop up any smokes seen.</b></p> <p><b>No smokes on small fires for 72 hours plus one last no smoke check = controlled.</b></p> <p><b>No smokes on large fires 300' in for 72 hours plus one last no smoke check = controlled</b></p>							
8. Special Instruction							
<p><b>Maintain situational awareness at all times given the temperatures and humidities in the fire areas.</b></p> <p><b>Hydrate, hydrate, hydrate! Even though temperatures are moderating.</b></p> <p><b>Assess, document and report fireline suppression repair needs.----- Haul all garbage off the fire line.</b></p>							
9. Division/Group Communication Summary							
Function	Frequency	System	Channel	Function	Frequency	System	Channel
Command	RX 151.4450 W Tone 103.5 (8) TX 159.3450 W Tone 7&9	King NIFC	CDF Command 8	Tactical	TX 151.160 W  RX 151.160 W	King NIFC	CDF Tac 2
Tactical Div/Group	RX 154.265 W TX 154.265 W	King NIFC	White 2	Air to Ground	RX 151.2200 N TX 151.2200 N	King NIFC	Air/Ground
Prepared by (Resource Unit Ldr.) <b>Terrie Ridenhour</b>		Approved by (Planning Sect. Ch.) <b>Pam Linstedt</b>		Date <b>7/15/08</b>		Time <b>1800</b>	



# MEU NORTHERN OPERATIONS

<b>DIVISION ASSIGNMENT LIST</b>			1. Branch <b>I / II</b>		2. Division/Group <b>Willits Patrol</b>		
3. Incident Name <b>MEU Lightning Complex</b>			4. Operational Period Date: <b>7/16/08-7/17/08</b> Time: <b>0700-0700</b>				
5. Operations Personnel							
Operations Chief		<b>Jeff Brand</b>		Northern Operations		<b>Ed Locke</b>	
Branch Director		<b>Darrell Wolf</b>		Air Attack Supervisor No.		<b>Chris Avina</b>	
6. Resources Assigned this Period							
Strike Team/Task Force/ Resource Designator	Leader	Number Persons	Trans. Needed	Drop Off PT./Time	Pick Up PT./Time	Check In	Check Out
<b>SOF</b>	<b>Lou Sciocchetti/Lenny Kempf</b>	<b>1</b>	<b>N</b>	<b>Laytonville Camp</b>	<b>Assigned to N. Ops.</b>		
STC BTU 9210C	Dan Summerville	16	N	Howard Forest Camp			
ENG LNU 1468	Vallerga	4	N	Howard Forest Camp			
ENG E-8006 S&L Serv	Lance Christensen	3	N	Howard Forest Camp			
ENG ID-E-346 Troy 1	R. Bennett	3	N	Howard Forest Camp			
ENG MT-E-343 Red Dvl 2	W. Early	3	N	Howard Forest Camp			
ENG MT-E-249 2817	C Whitegrass	3	N	Howard Forest Camp			
CRW C-8001 GH Ranch 17	David Mattson	20	N	Howard Forest Camp			
CRW VAD SRV 14	R. Cervantes	21	N	Howard Forest Camp			
DOZ E-489 Kurcher	Calvin Kurcher	2	N	Howard Forest Camp			
DOZ E-463 Kurcher	Joe Kurcher	2	N	Howard Forest Camp			
W/T E-493 Kurcher	Steve Bishop	2	N	Howard Forest Camp			
7. Control Operations <b>Patrol and mop up 300' on all fires ----- Walk contained fires as assigned and mop-up any smokes seen.</b> <b>No smokes on small fires for 72 hours plus one last no smoke check = controlled.</b> <b>No smokes on large fires 300' in for 72 hours plus one last no smoke check = controlled</b>							
8. Special Instructions <b>Maintain situational awareness at all times given the temperatures and humidities in the fire areas.</b> <b>Hydrate, hydrate, hydrate! Even though temperatures are moderating.</b> <b>Assess, document and report fireline suppression repair needs.----- Haul all garbage off the fire line.</b>							
9. Division/Group Communication Summary							
Function	Frequency	System	Channel	Function	Frequency	System	Channel
Command	RX 151.4450 W Tone 103.5 (8) TX 159.3450 W Tone 7&9	King NIFC	CDF Command 8	Tactical	RX 151.160W  TX151.160W	King NIFC	CDF Tac 2
Tactical Div/Group	RX 154.265 W TX 154.265 W	King NIFC	White 2	Air to Ground	RX 151.2200 N TX 151.2200 N	King NIFC	Air/Ground
Prepared by (Resource Unit Ldr.) <b>Terrie Ridenhour</b>		Approved by (Planning Sect. Ch.) <b>Pam Linstedt</b>		Date <b>7/15/08</b>		Time <b>1800</b>	

## MEU NORTHERN OPERATIONS

<b>DIVISION ASSIGNMENT LIST</b>				1. Branch <b>I / II</b>		2. Division/Group <b>Wilson Staging</b>	
3. Incident Name <b>MEU Lightning Complex</b>				4. Operational Period Date: <b>7/16/08-7/17/08</b> Time: <b>0700-0700</b>			
5. Operations Personnel							
Operations Chief		<b>Jeff Brand</b>		Northern Operations		<b>Ed Locke</b>	
Branch Director		<b>Darrell Wolf</b>		Air Attack Supervisor No.		<b>Chris Avina</b>	
6. Resources Assigned this Period							
Strike Team/Task Force/ Resource Designator	Leader	Number Persons	Trans. Needed	Drop Off PT./Time	Pick Up PT./Time	Check In	Check Out
IC	Jon Hafstrom	1	N	Henthorn Staging			
DIVS	Craig Dudley	1	N	Henthorn Staging			
ENG MEU 1162	Ken Harrington	4	N	Henthorn Staging			
ENG MEU 1155	Justin Buckingham	4	N	Henthorn Staging			
STH LNU 9130H	Justin Benguerel	25	N	Henthorn Staging			
CRW NEU C-2	Steve Mueller	12	N	Henthorn Staging			
DOZ MEU 1141	Nate Gray	1	N	Henthorn Staging			
7. Control Operations							
<p><b>Patrol Pork and Murphy incidents. Henthorn Spike to prep Henthorn Wilderness Camp.</b></p> <p><b>Walk contained fires as assigned and mop up any smokes seen.</b></p> <p><b>No smokes on small fires for 72 hours plus one last no smoke check = controlled.</b></p> <p><b>No smokes on large fires 300' in for 72 hours plus one last no smoke check = controlled</b></p>							
8. Special Instruction							
<p><b>Maintain situational awareness at all times given the temperatures and humidities in the fire areas.</b></p> <p><b>Hydrate, hydrate, hydrate! Even though temperatures are moderating.</b></p> <p><b>Assess, document and report fireline suppression repair needs.----- Haul all garbage off the fire line.</b></p>							
9. Division/Group Communication Summary							
Function	Frequency	System	Channel	Function	Frequency	System	Channel
Command	RX 151.4450 W Tone 103.5 (8) TX 159.3450 W Tone 7&9	King NIFC	CDF Command 8	Tactical	TX 151.160 W  RX 151.160 W	King NIFC	CDF Tac 2
Tactical Div/Group	RX 154.265 W TX 154.265 W	King NIFC	White 2	Air to Ground	RX 151.2200 N TX 151.2200 N	King NIFC	Air/Ground
Prepared by (Resource Unit Ldr.) <b>Terrie Ridenhour</b>		Approved by (Planning Sect. Ch.) <b>Pam Linstedt</b>		Date <b>7/15/08</b>		Time <b>1800</b>	

# MEU SOUTHERN OPERATIONS

<b>DIVISION ASSIGNMENT LIST</b>			1. Branch <b>III</b>		2. Division/Group <b>Ukiah Patrol</b>		
3. Incident Name <b>MEU Lightning Complex</b>			4. Operational Period Date: <b>7/16/08-7/17/08</b> Time: <b>0700-0700</b>				
5. Operations Personnel							
Operations Chief		<b>Jeff Brand</b>		Southern Operations		<b>Robert Rodello</b>	
Branch Director		<b>Jim Barry</b>		Air Attack Supervisor No.		<b>Chris Avina</b>	
6. Resources Assigned this Period							
Strike Team/Task Force/ Resource Designator	Leader	Number Persons	Trans. Needed	Drop Off PT./Time	Pick Up PT./Time	Check In	Check Out
<b>SOF</b>	<b>Ken Margiott/Herb Love [T]</b>	<b>2</b>	<b>N</b>	<b>Ukiah Base</b>	<b>Assigned to So Ops</b>		
Ukiah Patrol Group	Brian Kornegay	1	N	Ukiah Base			
STC LNU 9141C	Mike Parkes	18	N	Ukiah Base			
TF Lightning 15	Jim Lydon	15	N	Ukiah Base			
ENG UT WCE 402	Micheal Erickson	4	N	Ukiah Base			
ENG AZ TNF E-37	Nick Castro	8	N	Ukiah Base			
ENG E-8011 Buffalo 1	Gregg Webster	3	N	Ukiah Base			
ENG E-8012 Buffalo 2	Jerry McElderry	3	N	Ukiah Base			
U1152 (w/ENG1179 crew)	Ken Azevedo	4	N	Ukiah Base			
CRW SCU Alameda 1	Dave Kerstiens	12	N	Ukiah Base			
W/T E-446 Sousa	Mike Sousa	2	N	Ukiah Base			
W/T E-3 Ford	Gary Ford	2	N	Ukiah Base			
7. Control Operations							
<p><b>Patrol and mop up 300' on all fires ----- Walk contained fires as assigned and mop-up any smokes seen.</b></p> <p><b>No smokes on small fires for 72 hours plus one last no smoke check = controlled.</b></p> <p><b>No smokes on large fires 300' in for 72 hours plus one last no smoke check = controlled</b></p>							
8. Special Instructions							
<p><b>Maintain situational awareness at all times given the temperatures and humidities in the fire areas.</b></p> <p><b>Hydrate, hydrate, hydrate! Even though temperatures are moderating.</b></p> <p><b>Assess, document and report fireline suppression repair needs.----- Haul all garbage off the fire line.</b></p>							
9. Division/Group Communication Summary							
Function	Frequency	System	Channel	Function	Frequency	System	Channel
Command	RX 151.2650 W TX 159.3300 W Tone 3&4	King NIFC	CDF Command 2	Tactical	RX 151.1600 W TX 151.1600 W	King NIFC	CDF Tac 2
Tactical	RX 168.7000 N TX 170.9750 N Tone 1 (110.9)	King NIFC	NIFC CMD 1	Air to Ground	RX 151.2200 N TX 151.2200 N	King NIFC	Air/Ground
Prepared by (Resource Unit Ldr.) <b>Tony Giacomini</b>		Approved by (Planning Sect. Ch.) <b>Pam Linstedt</b>		Date <b>7/15/08</b>		Time <b>1800</b>	

# MEU NORTHERN OPERATIONS

<b>DIVISION ASSIGNMENT LIST</b>		1. Branch <b>IV</b>		2. Division/Group <b>Branch Resources</b>					
3. Incident Name <b>MEU Lightning Complex</b>		4. Operational Period Date: <b>7/16/08 – 7/17/08</b> Time: <b>0700-0700</b>							
5. Operations Personnel									
Operations Chief		<b>Jeff Brand</b>		Northern Operations		<b>Ed Locke</b>			
Branch Director		<b>Dave Barsi</b>		Air Attack Supervisor No.		<b>Chris Avina</b>			
6. Resources Assigned this Period									
Strike Team/Task Force/ Resource Designator	Leader	Number Persons	Trans. Needed	Drop Off PT./Time	Pick Up PT./Time	Check In	Check Out		
<b>SOF</b>	<b>Lou Sciocchetti/ Leonard Kempf</b>	<b>1</b>	<b>N</b>	<b>Laytonville Camp 0800</b>	<b>Assigned to N Ops</b>				
STB XTU 5180B	D Hicks	17	N	Laytonville Camp 0800	IA				
ENG BLM VLD 346	E. Valdez	6	N	Laytonville Camp 0800	IA				
DOZ MEU 1146	Jess Derickson	1	N	Laytonville Camp 0800	IA				
DOZ E-91 Ingram 1	Brad Ingram	2	N	Laytonville Camp 0800					
W/T E-215 Pinches	Pinches	1	N	Laytonville Camp-0800	IA				
W/T OES 21	R. Johnson	2	N	Laytonville Camp 0800	IA				
WT OES 51	Chad Carson	2	N	Laytonville Camp 0800	IA				
STC XSJ 4179C	C. Smith	17	N	Laytonville Camp 0800	Assigned to Br. IV				
CRW C-8005 Summitt	Kevin Roberts	20	N	Laytonville Camp 0800	Assigned to Br. IV				
W/T E-4 Pinches	George Pinches	1	N	Laytonville Camp 0800	Assigned to Br. IV				
7. Control Operations									
<b>Priority: Monitor radio and cell phones &amp; remain on 3-minute readiness during day shift</b>									
8. Special Instructions <b>Haul all garbage off the firelines.</b>									
<u>Criteria for "Controlled" status on fires</u> <table style="width: 100%; border: none;"> <tr> <td style="width: 50%; vertical-align: top;"> <i>Small Fires</i>  <b>100 % Observed</b>  <b>No smokes for 72 hours</b> </td> <td style="width: 50%; vertical-align: top;"> <i>Large Fires</i>  <b>Mopped up in 2 ½ x fuel size</b>  <b>Minimum 300 feet</b>  <b>No smokes for 72 hours in mopped up area</b> </td> </tr> </table> <p style="text-align: center;">48 hours after a fire has met the above criteria – It will be inspected one last time, prior to being declared "Controlled"</p> <p><b>"Branch Resources" are assigned during briefing for patrol and deployment. ----- Assess, document and report fireline suppression repair needs.</b></p>								<i>Small Fires</i> <b>100 % Observed</b> <b>No smokes for 72 hours</b>	<i>Large Fires</i> <b>Mopped up in 2 ½ x fuel size</b> <b>Minimum 300 feet</b> <b>No smokes for 72 hours in mopped up area</b>
<i>Small Fires</i> <b>100 % Observed</b> <b>No smokes for 72 hours</b>	<i>Large Fires</i> <b>Mopped up in 2 ½ x fuel size</b> <b>Minimum 300 feet</b> <b>No smokes for 72 hours in mopped up area</b>								
9. Division/Group Communication Summary									
Function	Frequency	System	Channel	Function	Frequency	System	Channel		
Command	RX 151.4450 W Tone 103.5 (8) TX 159.3450 W Tone 7 & 9	King NIFC	CDF Command 8	Tactical		King NIFC			
Tactical Div/Group	RX 151.1750 W TX 151.1750 W	King NIFC	CDF TAC 3	Air to Ground	RX 151.2200 N TX 151.2200 N	King NIFC	Air/Ground		
Prepared by (Resource Unit Ldr.) <b>Bob Quady</b>		Approved by (Planning Sect. Ch.) <b>Pam Linstedt</b>		Date <b>7/15/08</b>		Time <b>1700</b>			

# MEU NORTHERN OPERATIONS

<b>DIVISION ASSIGNMENT LIST</b>		1. Branch <b>IV</b>		2. Division/Group <b>Red Mountain</b>			
3. Incident Name <b>MEU Lightning Complex</b>		4. Operational Period Date: <b>7/16/08 – 7/17/08</b> Time: <b>0700-0700</b>					
5. Operations Personnel							
Operations Chief		<b>Jeff Brand</b>		Northern Operations		<b>Ed Locke</b>	
Branch Director		<b>Dave Barsi</b>		Air Attack Supervisor No.		<b>Chris Avina</b>	
6. Resources Assigned this Period							
Strike Team/Task Force/ Resource Designator	Leader	Number Persons	Trans. Needed	Drop Off PT./Time	Pick Up PT./Time	Check In	Check Out
<b>SOF</b>	<b>Lou Sciocchetti / Leonard Kemp</b>	<b>1</b>	<b>N</b>	<b>Laytonville Camp 0800</b>	<b>Assigned to N Ops</b>		
ENG ID E-253 E-93	John Ailport	3	N	Laytonville Camp 0800			
ENG ID E-344 E-95	Steve Bloedel	3	N	Laytonville Camp 0800			
ENG E 552 Grayback 24	Steve Yakel	3	N	Laytonville Camp 0800			
DOZ E-477 Ingram	Bret Ingram	2	N	Laytonville Camp-0800			
EXC E-501 Nunemaker	Jason Nunemaker	1	N	Laytonville Camp-0800			
7. Control Operations							
<p><b>Patrol for spots. ----- Maintain existing line. ----- Patrol and mop up 300 feet in. -----</b></p> <p><b>Pull all hose back to drop points and advise Branch for hauling.</b></p>							
8. Special Instructions							
<b>Haul all garbage off the firelines.</b>							
<b>Criteria for "Controlled" status on fires</b>							
<i>Small Fires</i>				<i>Large Fires</i>			
100 % Observed				Mopped up in 2 ½ x fuel size			
No smokes for 72 hours				Minimum 300 feet			
				No smokes for 72 hours in mopped up area			
48 hours after a fire has met the above criteria – It will be inspected one last time, prior to being declared "Controlled"							
<b>Assess, document and report fireline suppression repair needs.</b>							
9. Division/Group Communication Summary							
Function	Frequency	System	Channel	Function	Frequency	System	Channel
Command	RX 151.4450 W Tone 103.5 (8) TX 159.3450 W Tone 7& 9	King NIFC	CDF Command 8	Tactical		King NIFC	
Tactical Div/Group	RX 151.1750 W TX 151.1750 W	King NIFC	CDF TAC 3	Air to Ground	RX 151.2200 N TX 151.2200 N	King NIFC	Air/Ground
Prepared by (Resource Unit Ldr.)		Approved by (Planning Sect. Ch.)		Date		Time	
Bob Quady		Pam Linstedt		7/15/08		1700	

# MEU SOUTHERN OPERATIONS

<b>DIVISION ASSIGNMENT LIST</b>			1. Branch <b style="text-align: center;">V</b>		2. Division/Group <b style="text-align: center;">Sugarloaf DIV A</b>				
3. Incident Name <b style="text-align: center;">MEU Lightning Complex</b>			4. Operational Period Date: <b>7/16/08-7/17/08</b> Time: <b>0700-0700</b>						
5. Operations Personnel									
Operations Chief		<b>Jeff Brand</b>		Southern Operations		<b>Robert Rodello</b>			
Branch Director		<b>Erich Schwab</b>		Air Attack Supervisor No.		<b>Chris Avina</b>			
6. Resources Assigned this Period									
Strike Team/Task Force/ Resource Designator	Leader	Number Persons	Trans. Needed	Drop Off PT./Time	Pick Up PT./Time	Check In	Check Out		
SOF	Ken Margiott / Herb Love	2	N	Boonville Camp	Assigned to S. Ops				
Sugarloaf IC	Jim Vierra	1	N	Boonville Camp					
DIVS O-8008 Abbey	Travis Abbey	1	N	Boonville Camp	DIV A / K				
ENG BLM 3941	J. Jepeda	3	N	Boonville Camp					
CRW2 CNA Axe 2	Art Rodriguez	27	N	Boonville Camp					
CRW2 CNA Axe 3	Bill Waters	27	N	Boonville Camp					
CRW2 CNA Axe 9	Randy Bowersox	27	N	Boonville Camp					
W/T E-113 Floodgate	R. Paula	1	N	Boonville Camp					
W/T E-456 Freeman	Hue Freeman	1	N	Boonville Camp					
W/T E-8001 Tri-State 2	Mike Lawrence	2	N	Boonville Camp					
Control Operations <b>Continue line construction.</b> <b>Maintain and improve existing line.</b>									
8. Special Instructions <b>Criteria for "Controlled" status on fires</b> <table style="width: 100%; border: none;"> <tr> <td style="width: 50%; border: none;"><u>Small Fires</u> 100 % Observed No smokes for 72 hours</td> <td style="width: 50%; border: none;"><u>Large Fires</u> Mopped up in 2 ½ x fuel size MINIMUM 300 feet No smokes for 72 hours in mopped up area</td> </tr> </table> <b>48 hours after a fire has met the above criteria – It will be inspected one last time, prior to being declared "Controlled"</b> <b>Haul out all trash from fireline.</b> <b>Assess, document and report fireline suppression repair needs.</b>								<u>Small Fires</u> 100 % Observed No smokes for 72 hours	<u>Large Fires</u> Mopped up in 2 ½ x fuel size MINIMUM 300 feet No smokes for 72 hours in mopped up area
<u>Small Fires</u> 100 % Observed No smokes for 72 hours	<u>Large Fires</u> Mopped up in 2 ½ x fuel size MINIMUM 300 feet No smokes for 72 hours in mopped up area								
9. Division/Group Communication Summary									
Function	Frequency	System	Channel	Function	Frequency	System	Channel		
Command	RX 151.265 W TX 159.330 W Tone 3,4&9	King NIFC	CDF Command 2	Tactical Sugarloaf	RX 173.9125 N TX 173.9125 N	King NIFC	R5T4 Divs Z		
Tactical Div/Group	RX 151.3250 W TX 151.3250 W	King NIFC	CDF Tac 6 Divs A, K	Air to Ground	RX 151.2200 N TX 151.2200 N	King NIFC	Air/Ground		
Tactical Div/Group	RX 151.175 TX 151.175	King NIFC	CDF Tac 3 DIV R	Tactical Div/Group	RX 151.190 TX 151.190		CDF Tac 4 DIV Y		
Prepared by (Resource Unit Ldr.) <b>Tony Giacomini</b>		Approved by (Planning Sect. Ch.) <b>Pam Linstedt</b>		Date <b>7/15/08</b>		Time <b>1800</b>			

# MEU SOUTHERN OPERATIONS

<b>DIVISION ASSIGNMENT LIST</b>			1. Branch <b>V</b>		2. Division/Group <b>Sugarloaf DIV K</b>				
3. Incident Name <b>MEU Lightning Complex</b>			4. Operational Period Date: <b>7/16/08-7/17/08</b> Time: <b>0700-0700</b>						
5. Operations Personnel									
Operations Chief		<b>Jeff Brand</b>		Southern Operations		<b>Robert Rodello</b>			
Branch Director		<b>Erich Schwab</b>		Air Attack Supervisor No.		<b>Chris Avina</b>			
6. Resources Assigned this Period									
Strike Team/Task Force/ Resource Designator	Leader	Number Persons	Trans. Needed	Drop Off PT./Time	Pick Up PT./Time	Check In	Check Out		
<b>SOF</b>	<b>Ken Margiott / Herb Love</b>	<b>2</b>	<b>N</b>	<b>Boonville Camp</b>	<b>Assigned to S. Ops</b>				
DIVS O-8008 Abbey	Travis Abbey	1	N	Boonville Camp	DIV A / K				
TFLD O-8016 Bourrie	Marcel Bourrie	1	N	Boonville Camp					
STE Lightning 16	Dave Pierce	15	N	Boonville Camp					
ENG BLM 3946	J. Forgette	3	N	Boonville Camp					
ENG E-8002 Markley 1	Garey Markely	3	N	Boonville Camp					
CRW2 CNA Axe 1	Bob Coolidge	27	N	Boonville Camp					
CRW2 CNA Axe 7	Paul Janowicz	27	N	Boonville Camp					
W/T E-245 WBC	John Carmody	1	N	Boonville Camp					
W/T E-450 SAK Water	Shirley Kimes	2	N	Boonville Camp					
7. Control Operations									
<p><b>Continue line construction.</b></p> <p><b>Maintain and improve existing line.</b></p>									
8. Special Instructions									
<p><u>Criteria for "Controlled" status on fires</u></p> <table style="width: 100%; border: none;"> <tr> <td style="width: 50%; vertical-align: top;"> <p><i>Small Fires</i></p> <p>100 % Observed</p> <p>No smokes for 72 hours</p> </td> <td style="width: 50%; vertical-align: top;"> <p><i>Large Fires</i></p> <p>Mopped up in 2 ½ x fuel size</p> <p>MINIMUM 300 feet</p> <p>No smokes for 72 hours in mopped up area</p> </td> </tr> </table> <p>48 hours after a fire has met the above criteria – It will be inspected one last time, prior to being declared "Controlled"</p> <p>Haul out all trash from fireline.</p> <p><b>Assess, document and report fireline suppression repair needs.</b></p>								<p><i>Small Fires</i></p> <p>100 % Observed</p> <p>No smokes for 72 hours</p>	<p><i>Large Fires</i></p> <p>Mopped up in 2 ½ x fuel size</p> <p>MINIMUM 300 feet</p> <p>No smokes for 72 hours in mopped up area</p>
<p><i>Small Fires</i></p> <p>100 % Observed</p> <p>No smokes for 72 hours</p>	<p><i>Large Fires</i></p> <p>Mopped up in 2 ½ x fuel size</p> <p>MINIMUM 300 feet</p> <p>No smokes for 72 hours in mopped up area</p>								
9. Division/Group Communication Summary									
Function	Frequency	System	Channel	Function	Frequency	System	Channel		
Command	RX 151.265 W TX 159.330 W Tone 3,4&9	King NIFC	CDF Command 2	Tactical Sugarloaf	RX 173.9125 N TX 173.9125 N	King NIFC	R5T4 Divs Z		
Tactical Div/Group	RX 151.3250 W TX 151.3250 W	King NIFC	CDF Tac 6 Divs A, K	Air to Ground	RX 151.2200 N TX 151.2200 N	King NIFC	Air/Ground		
Tactical Div/Group	RX 151.175 TX 151.175	King NIFC	CDF Tac 3 DIV R	Tactical Div/Group	RX 151.190 TX 151.190		CDF Tac 4 DIV Y		
Prepared by (Resource Unit Ldr.) <b>Tony Giacomini</b>		Approved by (Planning Sect. Ch.) <b>Pam Linstedt</b>		Date <b>7/15/08</b>		Time <b>1800</b>			

# MEU SOUTHERN OPERATIONS

<b>DIVISION ASSIGNMENT LIST</b>			1. Branch <b>V</b>		2. Division/Group <b>Sugarloaf DIV R</b>		
3. Incident Name <b>MEU Lightning Complex</b>			4. Operational Period Date: <b>7/16/08-7/17/08</b> Time: <b>0700-0700</b>				
5. Operations Personnel							
Operations Chief		<b>Jeff Brand</b>		Southern Operations		<b>Robert Rodello</b>	
Branch Director		<b>Erich Schwab</b>		Air Attack Supervisor No.		<b>Chris Avina</b>	
6. Resources Assigned this Period							
Strike Team/Task Force/ Resource Designator	Leader	Number Persons	Trans. Needed	Drop Off PT./Time	Pick Up PT./Time	Check In	Check Out
DIVS O-8010 Fletcher	Mark Fletcher	1	N	Boonville Camp	DIV R/Y/Z		
TFLD O-8014 Smith	Chad Smith	1	N	Boonville Camp			
STC NEU 9231C	Chris Paulus	16	N	Boonville Camp			
STC XMY 2175C	D. Monterey	21	N	Boonville Camp			
STG LAC 1171G	E. Varela	31	N	Boonville Camp			
CRW MEU Parlin 2	A. Whitman	28	N	Boonville Camp			
CRW CNA Axe 10	Walt Williams	27	N	Boonville Camp			
W/T E-238 Bed Rock	R. Hanes	1	N	Boonville Camp			
W/T E-244 Dick Allen	Dick Allen	1	N	Boonville Camp			
W/T E-206 Redwood Valley	John Ingle	1	N	Boonville Camp			
W/T E-211 Giacomini	Scott Giacomini	1	N	Boonville Camp			
W/T E-448 H2O Pro	John Hughes	2	N	Boonville Camp			
W/T E-601 Mtn. Ent.	J. Rodrigues	1	N	Boonville Camp			
7. Control Operations <b>Continue line construction.</b> <b>Maintain and improve existing line.</b>							
8. Special Instructions <u>Criteria for "Controlled" status on fires</u> <div style="display: flex; justify-content: space-between;"> <div style="width: 45%;"> <p><b>Small Fires</b> 100 % Observed No smokes for 72 hours</p> </div> <div style="width: 45%;"> <p><b>Large Fires</b> Mopped up in 2 ½ x fuel size MINIMUM 300 feet No smokes for 72 hours in mopped up area</p> </div> </div> <p>48 hours after a fire has met the above criteria – It will be inspected one last time, prior to being declared "Controlled" Haul out all trash from fireline. <b>Assess, document and report fireline suppression repair needs.</b></p>							
9. Division/Group Communication Summary							
Function	Frequency	System	Channel	Function	Frequency	System	Channel
Command	RX 151.265 W TX 159.330 W Tone 3,4&9	King NIFC	CDF Command 2	Tactical Sugarloaf	RX 173.9125 N TX 173.9125 N	King NIFC	R5T4 Divs Z
Tactical Div/Group	RX 151.3250 W TX 151.3250 W	King NIFC	CDF Tac 6 Divs A, K	Air to Ground	RX 151.2200 N TX 151.2200 N	King NIFC	Air/Ground
Tactical Div/Group	RX 151.175 TX 151.175	King NIFC	CDF Tac 3 DIV R	Tactical Div/Group	RX 151.190 TX 151.190		CDF Tac 4 DIV Y
Prepared by (Resource Unit Ldr.) <b>Tony Giacomini</b>		Approved by (Planning Sect. Ch.) <b>Pam Linstedt</b>		Date <b>7/15/08</b>		Time <b>1800</b>	



# MEU SOUTHERN OPERATIONS

<b>DIVISION ASSIGNMENT LIST</b>			1. Branch <b>V</b>		2. Division/Group <b>Sugarloaf DIV Y</b>		
3. Incident Name <b>MEU Lightning Complex</b>			4. Operational Period Date: <b>7/16/08-7/17/08</b> Time: <b>0700-0700</b>				
5. Operations Personnel							
Operations Chief		<b>Jeff Brand</b>		Southern Operations		<b>Robert Rodello</b>	
Branch Director		<b>Erich Schwab</b>		Air Attack Supervisor No.		<b>Chris Avina</b>	
6. Resources Assigned this Period							
Strike Team/Task Force/ Resource Designator	Leader	Number Persons	Trans. Needed	Drop Off PT./Time	Pick Up PT./Time	Check In	Check Out
DIVS O-8010 Fletcher	Mark Fletcher	1	N	Boonville Camp	DIV R/Y/Z		
TFLD O-8015 Roberts	William Roberts	1	N	Boonville Camp			
FALC O-142 Kuny	Danny Kuny	1	N	Boonville Camp			
FALC O-124 Schlafer	Antone Schlafer	1	N	Boonville Camp			
STC XYO 4277C	Armando Jaramillo	18	N	Boonville Camp			
ENG LNU 1482	Mike Crosby	3	N	Boonville Camp			
ENG MEU 1191	Buzz Love	3	N	Boonville Camp			
STG LAC 1183G	C. Hanson	30	N	Boonville Camp			
STG NEU 9232G	Charlie Jacobs	30	N	Boonville Camp			
STH LNU 9131H	Amy Winkelman	20	N	Boonville Camp			
CRW MEU Chamb 2	Jesse Torres	18	N	Boonville Camp			
W/T OES 22	D. Woods	2	N	Boonville Camp			
W/T OES 41	S. DiMuccio	2	N	Boonville Camp			
W/T E-177 Ford & Daughters	Tracy Ford	2	N	Boonville Camp			
W/T E-449 Pearson 3	Ryan Pearson	2	N	Boonville Camp			
W/T E-534 Valley Timber	Nelson	2	N	Boonville Camp			
W/T E-5 Ingram	Ingram	2	N	Boonville Camp			
7. Control Operations <b>Continue line construction.....Maintain and improve existing line.</b>							
8. Special Instructions <u>Criteria for "Controlled" status on fires</u>							
<u>Small Fires</u>		<u>Large Fires</u>					
100 % Observed		Mopped up in 2 ½ x fuel size					
No smokes for 72 hours		MINIMUM 300 feet					
						No smokes for 72 hours in mopped up area	
48 hours after a fire has met the above criteria – It will be inspected one last time, prior to being declared "Controlled"							
Haul out all trash from fireline.							
<b>Assess, document and report fireline suppression repair needs.</b>							
9. Division/Group Communication Summary							
Function	Frequency	System	Channel	Function	Frequency	System	Channel
Command	RX 151.265 W TX 159.330 W Tone 3,4&9	King NIFC	CDF Command 2	Tactical Sugarloaf	RX 173.9125 N  TX 173.9125 N	King NIFC	R5T4 Divs Z
Tactical Div/Group	RX 151.3250 W TX 151.3250 W	King NIFC	CDF Tac 6 Divs A, K	Air to Ground	RX 151.2200 N TX 151.2200 N	King NIFC	Air/Ground
Tactical	TX 151.175	RX 151.175	CDF Tac 3; DIV R	Tactical	TX 151.190	RX 151.190	CDF Tac 4; DIV Y
Prepared by (Resource Unit Ldr.) <b>Tony Giacomini</b>		Approved by (Planning Sect. Ch.) <b>Pam Linstedt</b>		Date <b>7/15/08</b>		Time <b>1800</b>	

# MEU SOUTHERN OPERATIONS

<b>DIVISION ASSIGNMENT LIST</b>			1. Branch <b style="text-align: center;">V</b>		2. Division/Group <b style="text-align: center;">Sugarloaf DIV Z</b>				
3. Incident Name <b style="text-align: center;">MEU Lightning Complex</b>			4. Operational Period Date: <b>7/16/08-7/17/08</b> Time: <b>0700-0700</b>						
5. Operations Personnel									
Operations Chief		<b>Jeff Brand</b>		Southern Operations		<b>Robert Rodello</b>			
Branch Director		<b>Erich Schwab</b>		Air Attack Supervisor No.		<b>Chris Avina</b>			
6. Resources Assigned this Period									
Strike Team/Task Force/ Resource Designator	Leader	Number Persons	Trans. Needed	Drop Off PT./Time	Pick Up PT./Time	Check In	Check Out		
SOF	Ken Margiott / Herb Love	2	N	Boonville Camp	Assigned to S. Ops				
DIVS O-8010 Fletcher	Mark Fletcher	1	N	Boonville Camp	DIV R/Y/Z				
FAL MOD O-518 Pro Plus	Benson	2	N	Boonville Camp					
STC XSA 4154C	Niko King	21	N	Boonville Camp					
STC XSJ 4180C	G. Neely	17	N	Boonville Camp					
CRW C-8007 MQ Franco	J. Davila	20	N	Boonville Camp					
CRW C-8008 UT Co. 2	Andrew Siebach	22	N	Boonville Camp					
STL Lightning 10	Merv Goforth	2	N	Boonville Camp					
W/T OES 61	Dan Binn	2	N	Boonville Camp					
W/T E-207 Redwood Valley	Mike Silveria	1	N	Boonville Camp					
W/T E-240 Yreka	K. Miller	2	N	Boonville Camp					
W/T E-441 Peterson	T. Hurt	2	N	Boonville Camp					
7. Control Operations <b>Continue line construction.</b> <b>Maintain and improve existing line.</b>									
8. Special Instructions <u>Criteria for "Controlled" status on fires</u> <table style="width: 100%; border: none;"> <tr> <td style="width: 50%; border: none;"><u>Small Fires</u> 100 % Observed No smokes for 72 hours</td> <td style="width: 50%; border: none;"><u>Large Fires</u> Mopped up in 2 ½ x fuel size MINIMUM 300 feet No smokes for 72 hours in mopped up area</td> </tr> </table> <p>48 hours after a fire has met the above criteria – It will be inspected one last time, prior to being declared "Controlled" Haul out all trash from fireline. <b>Assess, document and report fireline suppression repair needs.</b></p>								<u>Small Fires</u> 100 % Observed No smokes for 72 hours	<u>Large Fires</u> Mopped up in 2 ½ x fuel size MINIMUM 300 feet No smokes for 72 hours in mopped up area
<u>Small Fires</u> 100 % Observed No smokes for 72 hours	<u>Large Fires</u> Mopped up in 2 ½ x fuel size MINIMUM 300 feet No smokes for 72 hours in mopped up area								
9. Division/Group Communication Summary									
Function	Frequency	System	Channel	Function	Frequency	System	Channel		
Command	RX 151.265 W TX 159.330 W Tone 3,4&9	King NIFC	CDF Command 2	Tactical Sugarloaf	RX 173.9125 N TX 173.9125 N	King NIFC	R5T4 Divs Z		
Tactical Div/Group	RX 151.3250 W TX 151.3250 W	King NIFC	CDF Tac 6 Divs A, K	Air to Ground	RX 151.2200 N TX 151.2200 N	King NIFC	Air/Ground		
Tactical Div/Group	RX 151.175 TX 151.175	King NIFC	CDF Tac 3 DIV R	Tactical Div/Group	RX 151.190 TX 151.190		CDF Tac 4 DIV Y		
Prepared by (Resource Unit Ldr.) <b>Tony Giacomini</b>		Approved by (Planning Sect. Ch.) <b>Pam Linstedt</b>		Date <b>7/15/08</b>		Time <b>1800</b>			



# MEU SOUTHERN OPERATIONS

<b>DIVISION ASSIGNMENT LIST</b>		1. Branch <b style="text-align: center;">V</b>		2. Division/Group <b style="text-align: center;">Navarro / Table Mtn / Indian</b>					
3. Incident Name <b style="text-align: center;">MEU Lightning Complex</b>		4. Operational Period Date: <b>7/16/08-7/17/08</b> Time: <b>0700-0700</b>							
5. Operations Personnel									
Operations Chief		<b>Jeff Brand</b>		Southern Operations		<b>Robert Rodello</b>			
Branch Director		<b>Erich Schwab</b>		Air Attack Supervisor No.		<b>Chris Avina</b>			
6. Resources Assigned this Period									
Strike Team/Task Force/ Resource Designator	Leader	Number Persons	Trans. Needed	Drop Off PT./Time	Pick Up PT./Time	Check In	Check Out		
<b>SOF (All DIVS)</b>	<b>Ken Margiott / Herb Love</b>	<b>2</b>	<b>N</b>	<b>Boonville Camp</b>	<b>Assigned to S. Ops</b>				
DIVS	Peter Laing (O-8004)	1	N	Boonville Camp					
MEU ENG 1187	Brian Barnett	3	N	Fort Bragg Camp					
ENG E-8019 MT-FWS SC1	Deb Goeb	3	N	8 mi E/O Hwy 1 on Navarro Ridge Rd					
ENG E-8018 Wild	T. Milam	3	N	8 mi E/O Hwy 1 on Navarro Ridge Rd					
CRW CNA Axe 4	Charles Cain		N	8 mi E/O Hwy 1 on Navarro Ridge Rd					
CRW CNA Axe 5	Curt Wisman	27	N	8 mi E/O Hwy 1 on Navarro Ridge Rd					
CRW CNA Axe 8	Tom Harris	27	N	Boonville Camp					
CRW2 Grayback 6	Warren Villa	20	N	Boonville Camp					
CRW Grayback Sup Mod 10	Antonio Mendoza	10	N	Boonville Camp					
W/T E-480 Bowers	John Bower	2	N	Boonville Camp					
W/T E-440 Norton	Danny Norton	2	N	Boonville Camp					
W/T E-555 Grayback 5	Digger Sallee	3	N	Boonville Camp					
W/T OES 42	R. Tellam 2	2	N	Boonville Camp					
7. Control Operations <b>Maintain and improve existing line.</b>									
8. Special Instructions <b>Criteria for "Controlled" status on fires</b> <table style="width: 100%; border: none;"> <tr> <td style="width: 50%; vertical-align: top;"><b><u>Small Fires</u></b> 100 % Observed No smokes for 72 hours</td> <td style="width: 50%; vertical-align: top;"><b><u>Large Fires</u></b> Mopped up in 2 ½ x fuel size MINIMUM 300 feet No smokes for 72 hours in mopped up area</td> </tr> </table> <b>48 hours after a fire has met the above criteria – It will be inspected one last time, prior to being declared "Controlled"</b> <b>Haul out all trash from fireline.</b> <b>Assess, document and report fireline suppression repair needs.</b>								<b><u>Small Fires</u></b> 100 % Observed No smokes for 72 hours	<b><u>Large Fires</u></b> Mopped up in 2 ½ x fuel size MINIMUM 300 feet No smokes for 72 hours in mopped up area
<b><u>Small Fires</u></b> 100 % Observed No smokes for 72 hours	<b><u>Large Fires</u></b> Mopped up in 2 ½ x fuel size MINIMUM 300 feet No smokes for 72 hours in mopped up area								
9. Division/Group Communication Summary									
Function	Frequency	System	Channel	Function	Frequency	System	Channel		
Command	RX 151.265 W TX 159.330 W Tone 3,4&9	King NIFC	CDF Command 2	Tactical		King NIFC			
Tactical Div/Group	RX 151.3250 W TX 151.3250 W	King NIFC	CDF Tac 6	Air to Ground	RX 151.2200 N TX 151.2200 N	King NIFC	Air/Ground		
Prepared by (Resource Unit Ldr.) <b>Tony Giacomini</b>		Approved by (Planning Sect. Ch.) <b>Pam Linstedt</b>		Date <b>7/15/08</b>		Time <b>1800</b>			

# MEU SOUTHERN OPERATIONS

<b>DIVISION ASSIGNMENT LIST</b>		1. Branch <b>V</b>		2. Division/Group <b>Mallo</b>					
3. Incident Name <b>MEU Lightning Complex</b>		4. Operational Period Date: <b>7/16/08-7/17/08</b> Time: <b>0700-0700</b>							
5. Operations Personnel									
Operations Chief		<b>Jeff Brand</b>		Southern Operations		<b>Robert Rodello</b>			
Branch Director		<b>Erich Schwab</b>		Air Attack Supervisor No.		<b>Chris Avina</b>			
6. Resources Assigned this Period									
Strike Team/Task Force/ Resource Designator	Leader	Number Persons	Trans. Needed	Drop Off PT./Time	Pick Up PT./Time	Check In	Check Out		
<b>SOF (All DIVS)</b>	<b>Ken Margiott / Herb Love</b>	<b>2</b>	<b>N</b>	<b>Boonville Camp</b>	<b>Assigned to S. Ops</b>				
<b>DIVS 0-8005 Cochrane</b>	<b>Kevin Cochrane</b>	<b>1</b>	<b>N</b>	<b>Boonville Camp</b>					
<b>DIVS 0-8006 Thoms</b>	<b>William Thoms</b>	<b>1</b>	<b>N</b>	<b>Boonville Camp</b>					
<b>TF Lightning 9</b>	<b>Steve Webster</b>	<b>3</b>	<b>N</b>	<b>Boonville Camp</b>					
<b>ENG MEU 1192</b>	<b>D. Covert</b>	<b>3</b>	<b>N</b>	<b>Boonville Camp</b>					
<b>ENG MEU 1164</b>	<b>Justin Spencer</b>	<b>3</b>	<b>N</b>	<b>Boonville Camp</b>					
<b>ENG LNU 1466</b>	<b>Diane Mibach</b>	<b>3</b>	<b>N</b>	<b>Boonville Camp</b>					
<b>CRW CNA Axe 6</b>	<b>Darus Ane</b>	<b>27</b>	<b>N</b>	<b>Boonville Camp</b>					
<b>W/T E-117 Bray</b>	<b>Terry Bray</b>	<b>2</b>	<b>N</b>	<b>Boonville Camp</b>					
7. Control Operations									
<p>Maintain and improve existing line.</p> <p>Conduct burning operations as needed.</p>									
8. Special Instructions									
<p style="text-align: center;"><u>Criteria for "Controlled" status on fires</u></p> <table style="width: 100%; border: none;"> <tr> <td style="width: 50%; vertical-align: top;"> <p><u>Small Fires</u></p> <p>100 % Observed</p> <p>No smokes for 72 hours</p> </td> <td style="width: 50%; vertical-align: top;"> <p><u>Large Fires</u></p> <p>Mopped up in 2 ½ x fuel size</p> <p>MINIMUM 300 feet</p> <p>No smokes for 72 hours in mopped up area</p> </td> </tr> </table> <p>48 hours after a fire has met the above criteria – It will be inspected one last time, prior to being declared "Controlled"</p> <p>Haul out all trash from fireline.</p> <p>Assess, document and report fireline suppression repair needs.</p>								<p><u>Small Fires</u></p> <p>100 % Observed</p> <p>No smokes for 72 hours</p>	<p><u>Large Fires</u></p> <p>Mopped up in 2 ½ x fuel size</p> <p>MINIMUM 300 feet</p> <p>No smokes for 72 hours in mopped up area</p>
<p><u>Small Fires</u></p> <p>100 % Observed</p> <p>No smokes for 72 hours</p>	<p><u>Large Fires</u></p> <p>Mopped up in 2 ½ x fuel size</p> <p>MINIMUM 300 feet</p> <p>No smokes for 72 hours in mopped up area</p>								
9. Division/Group Communication Summary									
Function	Frequency	System	Channel	Function	Frequency	System	Channel		
Command	RX 151.265 W TX 159.330 W Tone 3,4&9	King NIFC	CDF Command 2	Tactical		King NIFC			
Tactical Div/Group	RX 154.265 W TX 154.265 W	King NIFC	White 2	Air to Ground	RX 151.2200 N TX 151.2200 N	King NIFC	Air/Ground		
Prepared by (Resource Unit Ldr.) <b>Tony Giacomini</b>		Approved by (Planning Sect. Ch.) <b>Pam Linstedt</b>		Date <b>7/15/08</b>		Time <b>1800</b>			



# MEU NORTHERN OPERATIONS

<b>DIVISION ASSIGNMENT LIST</b>		1. Branch <b>VI</b>		2. Division/Group <b>Hardy Page 1 of 2</b>					
3. Incident Name <b>MEU Lightning Complex</b>		4. Operational Period Date: <b>7/16/08 - 7/17/08</b> Time: <b>0700-0700</b>							
5. Operations Personnel									
Operations Chief		<b>Jeff Brand</b>		Northern Operations		<b>Ed Locke</b>			
Branch Director		<b>Norm Brown</b>		Air Attack Supervisor No.		<b>Chris Avina</b>			
6. Resources Assigned this Period									
Strike Team/Task Force/ Resource Designator	Leader	Number Persons	Trans. Needed	Drop Off PT./Time	Pick Up PT./Time	Check In	Check Out		
<b>SOF</b>	<b>Lou Sciocchetti/Lenny Kempf</b>	<b>2</b>	<b>N</b>	Laytonville Camp 0800	<b>Assigned to N Ops</b>				
Hardy IC	Mike Maynard	1	N	DP#10-Tin Can Rd 0800					
TFLD O-8017	Heather Simpson	1	N	DP#10-Tin Can Rd 0800					
DIVS O-8007	Paul Buxtoncarr	1	N	DP#10-Tin Can Rd 0800					
DIVS O-8011	Todd Flannagan	1	N	DP#10-Tin Can Rd 0800					
DIVS O-8012	Earl Stefanyshen	1	N	DP#10-Tin Can Rd 0800					
STC HUU 9120C	Dale Barnett	22	N	DP#10-Tin Can Rd 0800					
STC MRN 9150C	Tim Thompson	21	N	DP#10-Tin Can Rd 0800					
ENG E-551 Grayback 11	Chris Kennedy	3	N	DP#10-Tin Can Rd 0800					
ENG MT-E-8013 Wind 207	G. Judd	3	N	DP#10-Tin Can Rd 0800					
ENG MT-E-8016 Hitower	Noel Nadeau	3	N	DP#10-Tin Can Rd 0800					
STG TGU 9254G	R. Geer	33	N	DP#10-Tin Can Rd 0800					
STG LNU 9145G	J. Juarez	33	N	DP#10-Tin Can Rd 0800					
Parlin Fork 3	Rich Lawler	17	N	DP#10-Tin Can Rd 0800					
Chamberlain Creek 1	Mike Smith	17	N	DP#10-Tin Can Rd 0800					
7. Control Operations <b>Maintain and improve existing line.</b>									
8. Special Instructions <b>DP #10 is on Tin Can Road ----- DP #2 is at MM 82.91 on Hwy 1 @ Juan Creek Bridge.</b> <b>Assess, document and report fireline suppression repair needs.</b> <b>Criteria for "Controlled" status on fires</b> <table style="width: 100%; border: none;"> <tr> <td style="width: 50%; border: none;"><u>Small Fires</u> 100 % Observed No smokes for 72 hours</td> <td style="width: 50%; border: none;"><u>Large Fires</u> Mopped up in 2 ½ x fuel size MINIMUM 300 feet No smokes for 72 hours in mopped up area</td> </tr> </table> <b>48 hours after a fire has met the above criteria - It will be inspected one last time, prior to being declared "Controlled"</b> <b>Haul all garbage off the fire line.</b>								<u>Small Fires</u> 100 % Observed No smokes for 72 hours	<u>Large Fires</u> Mopped up in 2 ½ x fuel size MINIMUM 300 feet No smokes for 72 hours in mopped up area
<u>Small Fires</u> 100 % Observed No smokes for 72 hours	<u>Large Fires</u> Mopped up in 2 ½ x fuel size MINIMUM 300 feet No smokes for 72 hours in mopped up area								
9. Division/Group Communication Summary									
Function	Frequency	System	Channel	Function	Frequency	System	Channel		
Command	RX 151.4450 W Tone 103.5 (8) TX 159.3450 W Tone 7 & 9	King NIFC	CDF Command 8	Tactical	RX 151.190 W  TX 151.190 W	King NIFC	CDF TAC 4		
Tactical Div/Group		King NIFC		Air to Ground	RX 151.2200 N TX 151.2200 N	King NIFC	Air/Ground		
Prepared by (Resource Unit Ldr.) <b>Kathleen Edwards</b>		Approved by (Planning Sect. Ch.) <b>Pam Linstedt</b>		Date <b>7/15/08</b>		Time <b>1800</b>			

# MEU NORTHERN OPERATIONS

<b>DIVISION ASSIGNMENT LIST</b>		1. Branch <b>VI</b>		2. Division/Group <b>Hardy Page 2 of 2</b>											
3. Incident Name <b>MEU Lightning Complex</b>		4. Operational Period Date: <b>7/16/08 – 7/17/08</b> Time: <b>0700-0700</b>													
5. Operations Personnel															
Operations Chief		<b>Jeff Brand</b>		Northern Operations		<b>Ed Locke</b>									
Branch Director		<b>Norm Brown</b>		Air Attack Supervisor No.		<b>Chris Avina</b>									
6. Resources Assigned this Period															
Strike Team/Task Force/ Resource Designator	Leader	Number Persons	Trans. Needed	Drop Off PT./Time	Pick Up PT./Time	Check In	Check Out								
CRW C-81 Grayback 11	Nathan Robinson	20	N	DP#10-Tin Can Rd 0800											
CRW C-83 Grayback 9	Ryan Watkins	20	N	DP#10-Tin Can Rd 0800											
DOZ E-491 Outback	Luke Andrew	1	N	DP#10-Tin Can Rd 0800											
DOZ E-492 Roen	Roen	1	N	DP#10-Tin Can Rd 0800											
W/T E-504 GRR Water	Tami Russell	1	N	DP#10-Tin Can Rd 0800											
W/T E-476 Simpson 2	Greg Simpson	2	N	DP#10-Tin Can Rd 0800											
W/T E-454 Johnson	Johnson	1	N	DP#10-Tin Can Rd 0800											
W/T E-170 Fortner	Fortner	1	N	DP#10-Tin Can Rd 0800											
W/T E-317 Hiatt	Hiatt	1	N	DP#10-Tin Can Rd 0800											
W/T E- 451 Got Water	Gary Reynolds	2	N	DP#10-Tin Can Rd 0800											
W/T E-579 Garman	Heath Garman	1	N	DP#10-Tin Can Rd 0800											
7. Control Operations															
<p><b>Maintain and improve existing line.</b></p> <p><b>Patrol and mop up 300 feet in.</b></p>															
8. Special Instructions															
<p><b>DP #10 is on Tin Can Road</b></p> <p><b>DP #2 is at MM 82.91 on Hwy 1 @ Juan Creek Bridge.</b></p> <p><b>Assess, document and report fireline suppression repair needs.</b></p> <p style="text-align: center;">Criteria for "Controlled" status on fires</p> <table style="width: 100%; border: none;"> <tr> <td style="width: 50%; border: none;"><u>Small Fires</u></td> <td style="width: 50%; border: none;"><u>Large Fires</u></td> </tr> <tr> <td style="border: none;">100 % Observed</td> <td style="border: none;">Mopped up in 2 ½ x fuel size</td> </tr> <tr> <td style="border: none;">No smokes for 72 hours</td> <td style="border: none;">MINIMUM 300 feet</td> </tr> <tr> <td style="border: none;"></td> <td style="border: none;">No smokes for 72 hours in mopped up area</td> </tr> </table> <p>48 hours after a fire has met the above criteria – It will be inspected one last time, prior to being declared "Controlled"</p> <p><b>Haul all garbage off the fire line</b></p>								<u>Small Fires</u>	<u>Large Fires</u>	100 % Observed	Mopped up in 2 ½ x fuel size	No smokes for 72 hours	MINIMUM 300 feet		No smokes for 72 hours in mopped up area
<u>Small Fires</u>	<u>Large Fires</u>														
100 % Observed	Mopped up in 2 ½ x fuel size														
No smokes for 72 hours	MINIMUM 300 feet														
	No smokes for 72 hours in mopped up area														
9. Division/Group Communication Summary															
Function	Frequency	System	Channel	Function	Frequency	System	Channel								
Command	RX 151.4450 W Tone 103.5 (8) TX 159.3450 W Tone 7 & 9	King NIFC	CDF Command 8	Tactical	RX 151.190 W  TX 151.190 W	King NIFC	CDF TAC 4								
Tactical Div/Group		King NIFC		Air to Ground	RX 151.2200 N TX 151.2200 N	King NIFC	Air/Ground								
Prepared by (Resource Unit Ldr.) <b>Kathleen Edwards</b>		Approved by (Planning Sect. Ch.) <b>Pam Linstedt</b>		Date <b>7/15/08</b>		Time <b>1800</b>									



## MEU NORTHERN OPERATIONS

<b>DIVISION ASSIGNMENT LIST</b>		1. Branch <b>VI</b>	2. Division/Group <b>Middle</b>												
3. Incident Name <b>MEU Lightning Complex</b>		4. Operational Period Date: <b>7/16/08 – 7/17/08</b> Time: <b>0700-0700</b>													
5. Operations Personnel															
Operations Chief		<b>Jeff Brand</b>	Northern Operations		<b>Ed Locke</b>										
Branch Director		<b>Norm Brown</b>	Air Attack Supervisor No.		<b>Chris Avina</b>										
6. Resources Assigned this Period															
Strike Team/Task Force/ Resource Designator	Leader	Number Persons	Trans. Needed	Drop Off PT./Time	Pick Up PT./Time	Check In	Check Out								
<b>SOF</b>	<b>Lou Sciocchetti/Lenny Kempf</b>	<b>2</b>	<b>N</b>	Laytonville Camp 0800	<b>Assigned to N Ops</b>										
Middle IC	Dino Rogers	1	N	Town of Rockport/Hwy1 0800	16 hr shift										
ENG MT-E-352 Eagle 4	M. Hauge	3	N	Town of Rockport/Hwy1 0800	16 hr shift										
7. Control Operations															
<b>Patrol Status</b>															
8. Special Instructions															
<p><b>Assess, document and report fireline suppression repair needs.</b></p> <p><b>Access is at Rockport.</b></p> <p style="text-align: center;"><b>Criteria for "Controlled" status on fires</b></p> <table style="width: 100%; border: none;"> <tr> <td style="width: 50%; border: none;"><u>Small Fires</u></td> <td style="width: 50%; border: none;"><u>Large Fires</u></td> </tr> <tr> <td style="border: none;">100 % Observed</td> <td style="border: none;">Mopped up in 2 ½ x fuel size</td> </tr> <tr> <td style="border: none;">No smokes for 72 hours</td> <td style="border: none;">MINIMUM 300 feet</td> </tr> <tr> <td style="border: none;"></td> <td style="border: none;">No smokes for 72 hours in mopped up area</td> </tr> </table> <p><b>48 hours after a fire has met the above criteria – It will be inspected one last time, prior to being declared "Controlled"</b></p> <p><b>Haul all garbage off the fire line.</b></p>							<u>Small Fires</u>	<u>Large Fires</u>	100 % Observed	Mopped up in 2 ½ x fuel size	No smokes for 72 hours	MINIMUM 300 feet		No smokes for 72 hours in mopped up area	
<u>Small Fires</u>	<u>Large Fires</u>														
100 % Observed	Mopped up in 2 ½ x fuel size														
No smokes for 72 hours	MINIMUM 300 feet														
	No smokes for 72 hours in mopped up area														
9. Division/Group Communication Summary															
Function	Frequency	System	Channel	Function	Frequency	System	Channel								
Command	RX 151.4450 W Tone 103.5 (8) TX 159.3450 W Tone 7 & 9	King NIFC	CDF Command 8	Tactical	RX 151.190 W  TX 151.190 W	King NIFC	CDF TAC 4								
Tactical Div/Group	RX 173.9625N TX 173.9625N	King NIFC	R5T5	Air to Ground	RX 151.2200 N TX 151.2200 N	King NIFC	Air/Ground								
Prepared by (Resource Unit Ldr.)		Approved by (Planning Sect. Ch.)		Date		Time									
Kathleen Edwards		Pam Linstedt		7/15/08		1800									

24

# MEU NORTHERN OPERATIONS

<b>DIVISION ASSIGNMENT LIST</b>			1. Branch <b>VI</b>		2. Division/Group <b>Juan Creek</b>										
3. Incident Name <b>MEU Lightning Complex</b>			4. Operational Period Date: <b>7/16/08 – 7/17/08</b> Time: <b>0700-0700</b>												
5. Operations Personnel															
Operations Chief		<b>Jeff Brand</b>		Northern Operations		<b>Ed Locke</b>									
Branch Director		<b>Norm Brown</b>		Air Attack Supervisor No.		<b>Chris Avina</b>									
6. Resources Assigned this Period															
Strike Team/Task Force/ Resource Designator	Leader	Number Persons	Trans. Needed	Drop Off PT./Time	Pick Up PT./Time	Check In	Check Out								
No resources assigned today.															
7. Control Operations <b>Resources from the Hardy may be used for patrol.</b>															
8. Special Instructions <b>Assess, document and report fireline suppression repair needs.</b> <b>DP #10 is on Tin Can Road</b> <b>Access at Juan Creek Bridge MM 82.91</b> <div style="margin-left: 40px;"> <u>Criteria for "Controlled" status on fires</u>  <table style="width: 100%; border: none;"> <tr> <td style="width: 50%; border: none;"><i>Small Fires</i></td> <td style="width: 50%; border: none;"><i>Large Fires</i></td> </tr> <tr> <td style="border: none;">100 % Observed</td> <td style="border: none;">Mopped up in 2 ½ x fuel size</td> </tr> <tr> <td style="border: none;">No smokes for 72 hours</td> <td style="border: none;">MINIMUM 300 feet</td> </tr> <tr> <td style="border: none;"></td> <td style="border: none;">No smokes for 72 hours in mopped up area</td> </tr> </table> <p style="margin-left: 40px;">48 hours after a fire has met the above criteria – It will be inspected one last time, prior to being declared "Controlled"</p> </div> <b>Haul all garbage off the fire line</b>								<i>Small Fires</i>	<i>Large Fires</i>	100 % Observed	Mopped up in 2 ½ x fuel size	No smokes for 72 hours	MINIMUM 300 feet		No smokes for 72 hours in mopped up area
<i>Small Fires</i>	<i>Large Fires</i>														
100 % Observed	Mopped up in 2 ½ x fuel size														
No smokes for 72 hours	MINIMUM 300 feet														
	No smokes for 72 hours in mopped up area														
9. Division/Group Communication Summary															
Function	Frequency	System	Channel	Function	Frequency	System	Channel								
Command	RX 151.4450 W Tone 103.5 (8) TX 159.3450 W Tone 7 & 9	King NIFC	CDF Command 8	Tactical	RX 151.190 W  TX 151.190 W	King NIFC	CDF TAC 4								
Tactical Div/Group		King NIFC		Air to Ground	RX 151.2200 N TX 151.2200 N	King NIFC	Air/Ground								
Prepared by (Resource Unit Ldr.) Kathleen Edwards		Approved by (Planning Sect. Ch.) Pam Linstedt		Date 7/15/08		Time 1800									

# MEU SOUTHERN OPERATIONS

<b>DIVISION ASSIGNMENT LIST</b>			1. Group <b>Mill Contingency</b>		2. Division/Group		
3. Incident Name <b>MEU Lightning Complex</b>			4. Operational Period Date: <b>7/16/08-7/17/08</b> Time: <b>0700-0700</b>				
5. Operations Personnel							
Operations Chief		<b>Jeff Brand</b>		Southern Operations		<b>Robert Rodello</b>	
Group Leader		<b>Rick Ryan</b>		Air Attack Supervisor No.		<b>Chris Avina</b>	
6. Resources Assigned this Period							
Strike Team/Task Force/ Resource Designator	Leader	Number Persons	Trans. Needed	Drop Off PT./Time	Pick Up PT./Time	Check In	Check Out
DIVS	Tony Howard	1	N	Soda Fire Station			
ENG MEU 1167	Rick Ryan	4	N	Soda Fire Station			
ENG MEU 1161	Dave Diggs	3	N	Soda Fire Station			
CRW OR-VAD SRV17	F. Gomez	20	N	Soda Fire Station			
CRW SD-SDS Black Hat	C. Blair	21	N	Soda Fire Station			
STL MVU 9338L	J. Lester	5	N	Soda Fire Station			
DOZ MEU 1143	Doug King	1	N	Soda Fire Station			
DOZ E-105 Britten	M. Condon	1	N	Soda Fire Station			
W/T OES MPA 52	Ruby Pearson	2	N	Soda Fire Station			
7. Control Operations							
8. Special Instructions <b>The Mill Fire is part of the Soda Complex. CAL FIRE Agency Representative is Bill Bradley.</b> <b>Logistical support provided by MEU Lightning Complex.</b> <b>Day light hours operations.</b> <b>Morning briefing 0700 at Soda Fire Station.</b>							
9. Division/Group Communication Summary							
Function	Frequency	System	Channel	Function	Frequency	System	Channel
Command	RX 168.075 TX 170.425 Tone 110.9	NIFC	CH 5	Tactical			
Tactical	RX 164.1375 TX 164.1375 Tone 110.9	NIFC	CH 4	Air to Ground	RX 164.7250 TX 164.7250 Tone 110.9	NIFC	CH 13
Prepared by (Resource Unit Ldr.) Tony Giacomini		Approved by (Planning Sect. Ch.) Pam Linstedt		Date 7/15/08		Time 1800	

# MEU NORTHERN OPERATIONS

<b>DIVISION ASSIGNMENT LIST</b>			1. Branch <b>All Branches</b>		2. Division/Group <b>Fire Suppression Repair</b>		
3. Incident Name <b>MEU Lightning Complex</b>			4. Operational Period Date: <b>7/16/08-7/17/08</b> Time: <b>0700-0700</b>				
5. Operations Personnel							
Operations Chief		<b>Jeff Brand</b>					
Branch Director		<b>Jeanette Pedersen</b>		Air Attack Supervisor No.		<b>Chris Avina</b>	
6. Resources Assigned this Period							
Strike Team/Task Force/ Resource Designator	Leader	Number Persons	Trans. Needed	Drop Off PT./Time	Pick Up PT./Time	Check In	Check Out
Repair Specialist	Shawn Zimmermaker/Tim Myers(T)	2	N	Chained to Desk			
Repair Specialist	Chris Curtis/ Charles Martin	1	N	Branch V Navarro			
Repair Specialist	Eric Wahl	1	N	Branch IV Shamrock-FSR			
Repair Specialist	Andy Whitlock(T)	1	N	Branch I/II Brushy 5-8			
Repair Specialist	David Lattimore	1	N	Branch III Low Gap-FSR			
Repair Specialist	Guy Anderson/Charles Hixon(T)	2	N	Branch I Butch-FSR			
Repair Specialist	Thomas Hintz	1	N	Branch I			
Repair Specialist	Craig Pedersen	1	N	FSR Desk			
Repair Specialist	Cary Gloeckner	1	N	Branch V Cavanaugh & N. Fork			
Repair Specialist	Damon Denman	1	N	Branch I/II Brushy 1-4			
DOZ E-614 Lawrence	Al Lawrence	1	N	Branch V			
7. Control Operations <b>Assess, document and report fireline suppression repair needs.</b>							
8. Special Instructions							
9. Division/Group Communication Summary							
Function	Frequency	System	Channel	Function	Frequency	System	Channel
Command	RX 151.445 W Tone: 103.5 (8) TX 159.345 W	King NIFC	CDF Command 8	Command	RX 151.265 W TX 159.330 W	King NIFC	CDF Command 2
Tactical Div/Group		King NIFC		Air to Ground	RX 151.2200 N TX 151.2200 N	King NIFC	Air/Ground
Prepared by (Resource Unit Ldr.) <b>Pam Linstedt</b>		Approved by (Planning Sect. Ch.) <b>Pam Linstedt</b>		Date <b>7/15/08</b>		Time <b>1800</b>	

DIVISION ASSIGNMENT LIST		1. Branch <b>ALL BRANCHES</b>		2. Division/Group <b>REST</b>	
3. Incident Name <b>MEU Lightning Complex</b>		4. Operational Period Date: <b>07/16/08 – 07/17/08</b> Time: <b>0700-0700</b>			
5. Operations Personnel					
Operations Chief	Jeff Brand	Division/Group Supervisor			
Branch Director		Air Attack Supervisor No.			
6. Resources Assigned this Period					
Strike Team/Task Force/ Resource Designator	Leader	DATE/ PERIOD OFF SHIFT	FROM	AFTER REST REPORT TO:	COMMENTS
ENG LNU 1450	Theron Radtkey	7/15 -----72 off	Branch I/II	Howard Forest Camp	Back 7/18
ENG ID-E-248 E61	A. Bruning	O/S 4-5 days	Branch I/II	Covelo Camp	Back 7/17
Repair Specialist	Chuck Yates	7/16 24 off	Branch III FSR	TBD	
CRW C-8004 N Pacific	L. Torres	7/16 24 off	Branch III	Ukiah Base	
ENG ID E-348 KG2114	Alexander Parker	48 off 7/15, 7/16	Branch IV	Branch IV	Laytonville @ 0700
STC AEU 9270C	J. Sanders	7/16 24 off	Branch V	Branch V	
STG TGU 9258G	Bill Rominger	48 off 7/15-7/16	Branch V	Branch V	
STG TGU 9258G	Tom Crespin	7/16 24 off	Branch V	Branch V	
CRW MEU Chamb 4	Chuck Ray	48 off 7/15-7/16	Branch V	Branch V	
STL LNU 9143L	Doyle Head	48 off 7/15-7/16	Branch V	Branch V	
W/T E-8000 JK Water	Don Snyder	48 off 7/15-7/16	Branch V	Branch V	
CRW MEU Willits	William Bishop	7/16 24 off	Branch V	Branch V	
STC NEU 9230C	Steve Robinson	7/16/08/ - 24 hr off	Branch VI	Br VI – Hardy	
STC SCU 9161C	Deanna Hall	7/16/08/ - 24 hr off	Branch VI	Br VI – Lost Pipe	
ENG MEU 1163	Barnett	7/16/08/ - 24 hr off	Branch VI	Br VI – Hardy	
STG AEU 9273G	Robert Neal	7/16/08/ - 24 hr off	Branch VI	Br VI – Hardy	
STG AEU 9275G	Howard Drummond	7/16/08/ - 24 hr off	Branch VI	Br VI – Lost Pipe	
CRW C-82 Patrick Enviro-13	TBA	7/16/08/ - 24 hr off	Branch VI	Br VI – Lost Pipe	

**Mendocino Lightning Complex  
MEU CA 004608**

**Criteria for “Controlled”  
status on fires**

- **Small Fires** - (100% observed) –
  - **No smokes for 72 hours**
  
- **Large Fires** –
  - **Mopped up in 2 ½ X fuel size**
  - **MINIMUM 300 feet**
  - **No smokes for 72 hours in mopped up areas**

**48 hours after a fire has met the above  
criteria – It will be inspected one last time,  
prior to being declared “Controlled”**

# AIR OPERATIONS SUMMARY

PREPARED BY: Chris Avina

PREPARED DATE/TIME: 07/15/08 1700

1. INCIDENT NAME:  
MEU Lightning Complex

2. OPERATIONAL PERIOD DATE: 07/16/08

START TIME: 0800

END TIME: 2011

SUNRISE: 0554

SUNSET: 2041

3. REMARKS (Safety Notes, Hazards, Air Operations Special Equipment, etc.):  
Helibase is Brook Trails Airport (BRK) Lat: 39 27.139 Long: 123 22.420 com 122.8  
Howard Forest Helitack Base Lat: 39 20.747 Long: 123 19.002  
Safety: Heavy Smoke and 3 TFR's in place. On a new fire be sure to get a Lat and Long and pass it on to Air Ops. and the Branch that the fire is in. Air to ground is not a Tac FREQ have the copter come up on your Tac after you make contact.

4. MEDEVAC A/C:  
Go through your Branch and notify Air Ops.

5. TFR: Three TFR's in place.  
NOTAM Numbers:  
FDC 8/4957  
FDC 8/4958  
FDC 8/4959  
FDC 07/035  
All TFR's posted at te Helibase

6. PERSONNEL	Phone	7. FREQUENCIES	AM	FM	8. FIXED-WING	# Avail / Type/ Make-Model / FAA N# / Base(s)
AOBD: Chris Avina	707-217-9278	AIR/AIR FW:	127.475	171.5375	Airtankers	Two Type 3 Tankers
ATGS: Tom Glunt	707-239-2760	AIR/GROUND RW:		151.220	Leadplanes	
HLCO: Terry Guerrero (N) Warren Giacomini (S)	707-972-3828 707-91-6784	AIR/AIR RW:	132.425 N 127.475 S		Base FAX #:	Ukiah 707-462-6539
ASGS: : Mark Gradek	707-696-3579	COMMAND:	CDF Command 2 Tone 4 CDF Command 8 Tone 7		ATGS Aircraft	AA140 123.975 Base Victor
HEBM: Greg Bertelli	707-494-8822	COMMAND RPT			Crash Truck	Little Lake E5482
ATB MGR:		DECK FREQ:	163.100			
HELIBASE	707-489-4184	TOLC FREQ:	122.800			

## 9. HELICOPTERS (Use Additional Sheets As Necessary)

FAA N#	TY	MAKE/MODEL	BASE	AVAIL	START	REMARKS	FAA N#	TY	MAKE/MODEL	BASE	AVAIL	START	REMARKS
C769	1	S 61	BRK	0800			7PJ	2	UH-1H	BRK	0800		
7HT	1	B 214	BRK	0800			5PJ	2	UH-1H	BRK	0800		
72D	1	BV 107	BRK	0800			68U	2	S58T	BRK	0800		Standard Cat.
2WM	1	KMAX	BRK	0800									
725HT	1	B 214	BRK	0800									
746	1	SKY CRANE	BRK	0800									
JOLLY 93	1	UH 60	UKI	1000			7CP	3	B 407	BRK	0800		
838	1	UH 60	UKI	1000			64PJ	3	206 L3	BRK	0800		SOUTH HELCO
C101	2	UH-1H	HFH	0800		CAL FIRE	60Q	3	H 500	BRK	0800		NORTH HELCO

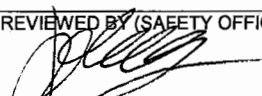
30

INCIDENT RADIO COMMUNICATIONS PLAN			Incident Name MEU Lightning Complex			Date/Time Prepared 7/15/08 1830		Operational Period Date/Time 7/16 - 7/17/08 0700 - 0700			
Ch #	Function	Channel Name/Trunked Radio System Talk group	Assignment	RX Freq	N or W	RX Tone/NAC	TX Freq	N or W	Tx Tone/NAC	Mode A, D or M	Remarks
1	Command	CDF CMD 1	Unassigned	151.355	W		159.300	W	156.7	A	T-6 Cold Springs
2	Command	CDF CMD 2	BR 3 & 5	151.265	W		159.330	W		A	T-3 & 9 Cold Spring T-4 Laughlin
3	Command	CDF CMD 8	BR 1, 2, 4 & 6	151.445	W	103.5 (8)	159.345	W		A	BR 1, 4, 6, T-7 Cahito Peak & Iron Peak T-9 BR 2, T-8 Laughlin or T-7
4	Tactical	Calcord	Medical	156.075	W		156.075	W		A	GROUND TO EMS AIRCRAFT
5	Tactical	White 2	BR 1 & 5	154.265	W		154.265	W		A	Covelo, Mallo Series
6	Tactical Repeater	NIFC CMD 1	BR 3	168.7000	N		170.9750	N	110.9	A	T-1 Orr Fire Only, CDF Kenwood Group 3 CH 109
7	Dispatch	MEU Local	New Incidents	151.385	W	110.9 (1)	159.270	W		A	Tones 3, 4, 5 & 6
8	Tactical	R5T4	BR 1, 5 & 6	173.9125	N		173.9125	N		A	BR 5 Sugar Loaf Fire Div. Z BR 6 Lost Pipe Fire
9	Tactical	R5T5	BR 6	173.9625	N		173.9625	N		A	Middle Fire
10	Tactical	CDF Tac 2	BR 2 & 3	151.160	W		151.160	W		A	BR 2 & 3
11	Tactical	CDF Tac 3	BR 4 & 5	151.175	W		151.175	W		A	BR 4 & Sugarloaf Div. R
12	Tactical	CDF Tac 4	BR 5 & 6	151.190	W		151.190	W		A	BR 6 Hardy & Lost Pipe BR 5 Sugarloaf Div Y
13	Tactical	CDF Tac 6	BR 5	151.325	W		151.325	W		A	BR 5 Sugarloaf Div. A,K
14	Air Guard	Air Guard	Emergency	168.6250	N		168.6250	N	110.9	A	Air/Ground Emergency
15	Air/Ground	CDF Air/Ground	Air/Ground	151.2200	N		151.2200	N		A	Air/Ground
16	Air Guard	Air Guard	Emergency	168.6250	N		168.6250	N	110.9	A	Air/Ground Emergency

Prepared by (Communications Unit)  
 Alan K Knopp COMML  
 Incident Location Mendocino County  
 County Mendocino State Ca Latitude Longitude W

The convention calls for frequency lists to show four digits after the decimal place, followed by either an "N" or a "W", depending on whether the frequency is narrow or wide band. Mode refers to either "A" or "D" indicating analog or digital (e.g. Project 25) or "M" indicating mixed mode. All channels are shown as if programmed in a control station, mobile or portable radio. Repeater and base stations must be programmed with the Rx and Tx reversed.



<b>MEDICAL PLAN</b>	1. INCIDENT NAME MEU Lightning	2. DATE PREPARED 7/15/08	3. TIME PREPARED 1600	4. OPERATIONAL PERIOD 7/16-7/17 0700-0700				
<b>5. INCIDENT MEDICAL AID STATION</b>								
MEDICAL AID STATIONS	LOCATION			PARAMEDICS				
				YES NO				
Medic Unit	Ukiah Base Camp							
DMAT	Boonville Fairgrounds contact Richard at 707-367-5222			X <input type="checkbox"/>				
MERT	Laytonville Camp 10 Mile Road			X <input type="checkbox"/>				
Medic Unit	Legget			X				
Medic Unit	Covelo			X				
<b>6. TRANSPORTATION</b>								
<b>A. AMBULANCE SERVICES</b>								
NAME	ADDRESS	PHONE	PARAMEDICS					
			YES	NO				
Covelo Ambulance Service	Covelo	911/ ECC	<input type="checkbox"/>	<input checked="" type="checkbox"/>				
Ukiah Ambulance	Ukiah	911/ ECC	<input checked="" type="checkbox"/>	<input type="checkbox"/>				
Calstar Air Ambulance	Ukiah	911/ ECC	<input checked="" type="checkbox"/>	<input type="checkbox"/>				
Coast Life Support	Ocean Dr. Gualala, Helibase South Coast	911/ ECC	X					
Willits Ambulance	Willits	911/ ECC	X	<input type="checkbox"/>				
Anderson Valley	Boonville	911/ ECC		X				
<b>B. INCIDENT AMBULANCES</b>								
NAME	LOCATION			PARAMEDICS				
			YES	NO				
CDF Short Haul Rescue	Howard Forest			<input type="checkbox"/>				
Medic 9116	Branch IV			X <input type="checkbox"/>				
<b>7. HOSPITALS</b>								
NAME	ADDRESS/Lat.-Long	TRAVEL TIME		PHONE	HELIPAD		BURN CENTER	
		AIR	GRND		YES	NO	YES	NO
Howard Memorial Hospital	1 Madrone St. Willits n39 23.36 x w120 20.3	20 min	70 min	707.456.3050	<input type="checkbox"/>	X	<input type="checkbox"/>	X
Ukiah Vly Medical Ctr.	272 Hospital Dr. Ukiah n39 08.78 x w123 12.23	30 min	75 min	707.462.3111	X	<input type="checkbox"/>		x
U.C. Davis	2315 Stockton Blvd. Sacramento N38 33.20 W 121 27.28	75 min	3.5 hr	916.734.3636	X	<input type="checkbox"/>	x	<input type="checkbox"/>
Mendocino Coast Hospital	700 River Dr.	<input type="checkbox"/>	<input type="checkbox"/>	707-961-1234	X	<input type="checkbox"/>	<input type="checkbox"/>	X
Santa Rosa Med Center	1165 Montgomery Drive	45 min	2 hr		x	<input type="checkbox"/>	<input type="checkbox"/>	x
<b>8. MEDICAL EMERGENCY PROCEDURES</b>								
<ol style="list-style-type: none"> <li>1. Provide immediate care, treatment, and notify supervisor.</li> <li>2. Supervisor notify Branch and / or Ops with injury type(s), lat and long, and physical location.</li> <li>3. Branch / Ops notify Lightning Communications and request appropriate medical transport.</li> <li>4. Communications notify MEU ECC for dispatching request, Lightning Safety Officer and Med Unit Leader.</li> <li>5. Monitor and use CALCORD for contact with Air Ambulance.</li> <li>6. Advise MEU ECC, and Lightning Communications of patient destination.</li> </ol>								
9. PREPARED BY (MEDICAL UNIT LEADER) Robert Marshall					10. REVIEWED BY (SAFETY OFFICER) 			

ICS 206

# MEU Lightning "Base Phone" List

## Ukiah Incident Base

Information (707) 462-5699

### Planning Section

Chief (707) 462-7597  
Deputy (707) 462-7857  
Resources (707) 462-7637  
Situation Status (707) 462-6972

### Technical Specialists

Training (707) 462-7064  
FBAN (707) 462-7054

### Logistics

Ordering (707) 462-7550  
Fax: (707) 462-7489  
Ground Support (707) 462-5650  
Motels (707) 462-7482  
Communications (707) 462-7290  
COML (707) 889-4213  
Fax: (707) 463-3824  
Medical (925) 817-9940

### Finance

Time Unit (707) 462-7352  
Fax: (707) 462-7348  
Procurement (707) 462-5797  
Renee Mulcahy (707) 337-4907  
Fax: (707) 462-7348  
Comp & Claims (707) 462-7072

Check In (707) 462-7455

### North Tree

Fax: (707) 462-7782  
Incident Cell (916) 203-8050

OES Phone (707) 462-5798  
Fax: (707) 462-5809

## Covelo Base

Covelo Station (707) 983-6499

## Laytonville Base

Laytonville Camp  
Check-in (707) 984-8929  
Fax: (707) 984-8796  
Incident Command (707) 984-8740  
Resources (707) 984-8921  
(707) 984-8714

## Booneville Base

Booneville Camp (707) 895-2306  
Fax: (707) 984-8796  
National Guard: (707) 895-3170  
Ops: (707) 895-3263

# IMPORTANT

## SUPPLY UNIT DEMOB PROCEDURES

Before demobilization through the **Ukiah Base**, you **MUST RETURN SUPPLIES** to the Supply Unit that issued the supplies (Covelo, Laytonville, Fort Bragg, or Boonville)

Once the supplies have been returned to the proper Supply Unit, get a General Message form from that Supply Unit indicating that the supplies have been returned.

Bring that General Message form to Ukiah Base Supply Unit as part of the demob check-out process.

Your demob will be delayed if you do not return supplies to the proper location.



# DEMOBILIZATION PLAN – summarized

## MEU Lightning Complex CAMEU 004608

### I. RELEASE PRIORITIES

The following Release Priorities have been established by the Incident Commander.

1. Out of State resources
2. Local Government
3. OES
4. Federal Agencies
5. Military
6. Private equipment and personnel
7. Out-of-Region CAL FIRE resources
8. Within Region CAL FIRE resources
9. Home Unit CAL FIRE

### II. GENERAL GUIDELINES

- A. **NO RESOURCES WILL LEAVE UNTIL AUTHORIZED BY THE DEMOB UNIT.**
- B. Efforts will be made to ensure that all released personnel arrive home by 2200 hours.
- C. All vehicles shall have an Asbestos mitigating treatment, Sudden Oak Death (SOD) wash treatment and a Mechanical Safety Inspection.
- D. Prior to leaving the Incident the Demob Unit will brief all Supervisors and Strike Team Leaders.
- E. Notification to incident personnel will be by posting "Tentative Demob" list in advance.
- F. Actual departure times and ETA at destination will be relayed to Expanded Dispatch at time of departure.
- G. A Personal Protective Equipment (PPE) self-sign off (On the ICS-221) must be completed by all CAL FIRE personnel. Crew Leaders, Strike Team and Task Force Leaders may sign for subordinates under their command. All incident personnel must be accounted for as having serviceable, agency compliant PPE. Defective items may be exchanged in supply.
- H. All Trainees will see the Training Tech Specialist prior to departure.
- I. Maximum driving duration for federal resources will not exceed 10 hours/person/day.

### III. RELEASE PROCEDURES

DMOB will post the date and time when Surplus resources can commence the Demob process and report to the Demob Unit.

The Crew Leader or individual will take the Demobilization Check-out form to:

**COML** (to confirm that radio and/or cell phone equipment is returned)

**SUPL** (to confirm all non-expendable property is returned)

**GSUL** (for Asbestos treatment, SOD wash treatment, and Mechanical Safety Inspection.)

**Finance/Time** (to confirm all finance and time documents are complete)

**DOCL** (to hand in unit logs and performance ratings)

**DMOB** will be the **last stop** in the release process and:

- Sign-off, note date and time on the ICS-221
- Confirm PPE self check off on ICS-221
- Note any revisions to the ETD or ETA
- Collect the ICS-221

Resource is **released** and free to leave the incident

**EMERGENCY WATERSHED PROTECTION GUIDELINES  
FOR GENERAL FIRELINE SUPPRESSION REPAIR**

**Dozer Lines**

1. Install waterbars; spacing not to exceed 100 feet on any dozer line. All areas should be considered to have high erosion potential.

Guideline for spacing of waterbars and rolling dips:

<b>Road or Fire Line Gradient</b>	<b>Spacing</b>
30% or Less	100 feet
30% to 50%	75 feet
50% or Greater	50 feet

2. Waterbars should be deep enough to significantly reduce the chance of being damaged and should be constructed at an angle of approximately 45 degrees to the fire line.
3. Where dozer lines cannot be drained by installation of waterbars (due to steepness or dozer lines within swales), the equipment operator will tractor pack a sufficient amount of woody vegetation into the surface to prevent erosion.
4. For dozer lines located along long ridgelines, alternate the direction of the waterbars (in a herring bone configuration), if the situation dictates.
5. Waterbars should be located to discharge into natural vegetation where possible; where waterbars are within 75 feet of a watercourse, install sufficient size rocks, other durable organic material and/or pack outlets with slash.
6. Remove berms created during dozer line construction.
7. Scatter organic debris over dozer line surface near areas where dozer lines intersect roads.
8. Reshape cross-slope control lines to as natural a contour as possible and remove lower berm.
9. Break apart dozer piles and spread out along dozer line.

**Handlines**

1. Install waterbars at the following spacing:

<b>Fire Line Gradient</b>	<b>Spacing</b>
30% or Less	100 feet
30% to 50%	75 feet
50% or Greater	50 feet

2. Fill in all under-slung trenches along cross slopes using material from the lower berm. Remove berms to allow flow of water across outsloped fireline.
3. Lop and scatter slash along the fire line near road intersections and within 75 feet from a watercourse.
4. Where handlines cannot be drained by installation of waterbars (due to steepness or handlines within swales), scatter slash along that portion of the handline to prevent erosion.

**Watercourse Crossings**

1. Remove all displaced soil and debris from the stream channel.
2. The excavated channel should be wider than the natural channel.
3. Slope back the approaches to prevent future stream bank failure.
4. As needed, scatter sufficient quantities of slash to stabilize exposed soil down to the edge of the active channel.
5. Clean out culvert inlets and outlets as needed.

**General Cleanup**

1. Collect all fire suppression-generated trash such as plastic water bottles, cardboard, plastic flagging, foodstuffs, wrappers, blown hose and plastic bags and pack it out.



# CAMP RULES

## MEU LIGHTNING COMPLEX

### **\*OVERHEAD – ENGINE CO's – CREW SUPERVISORS\*** **BRIEF YOUR CREWS**

The citizens of California and CAL FIRE Incident Command Team 4 truly appreciate your hard work on this incident. The purpose of the Incident Base/Camp is to provide service and support for the fire, rest and relaxation for personnel, and potential reassignment to different incidents.

The incident has had more than 2,000 firefighters at the various facilities while in operation. As you know, with any large operation such as this cooperation and understanding from all individuals assists everyone in their endeavors. Please observe common courtesy at all times.

So that you may have a clear understanding of the Command Team's expectations, we have provided the following rules and guidelines which need to be followed.

#### **Prohibited Activities with ZERO TOLERANCE:**

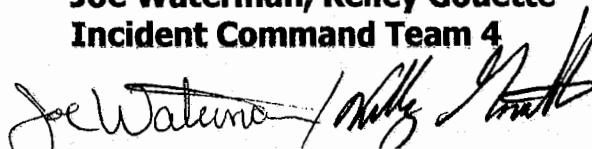
1. Possession or use of **DRUGS** or **ALCOHOL** is **NOT PERMITTED** on Base/Camp or on the incident.
2. Returning to the Incident Base/Camp or Incident **UNDER THE INFLUENCE OF DRUGS or ALCOHOL** is **NOT PERMITTED**. The entire crew/engine will be released, even if only one crew member is involved.
3. Packages may be searched upon entering the Base.
4. **NO WEAPONS** allowed in Incident Base/Camp, **Except Law Enforcement Personnel in the ICP Area.**
5. **NO SEXUAL** activity.
6. **NO SMOKING** in buildings, food line or around entry areas of Sections/Units.
7. **NO HORSEPLAY** or **FIGHTING**.
8. **NO GAMBLING.**
9. **NO LOUD MUSIC.**
10. **NO VULGAR LANGUAGE.**
11. **NO DAMAGE** to Fairgrounds buildings, facilities or off-site accommodations.

#### **Limit group sizes if traveling off Base/Camp.**

#### **INCIDENT BASE/CAMP WEAR Policy (7070.7.1)**

**CAL FIRE** personnel should remember that while off-shift, they remain on duty. Therefore, only authorized uniform clothing or safety clothing is to be worn while outside sleeping areas. It is the responsibility of company officers and their supervisors to ensure that personnel are properly attired at all times.

**Thank you for your cooperation,  
Joe Waterman, Kelley Gouette  
Incident Command Team 4**

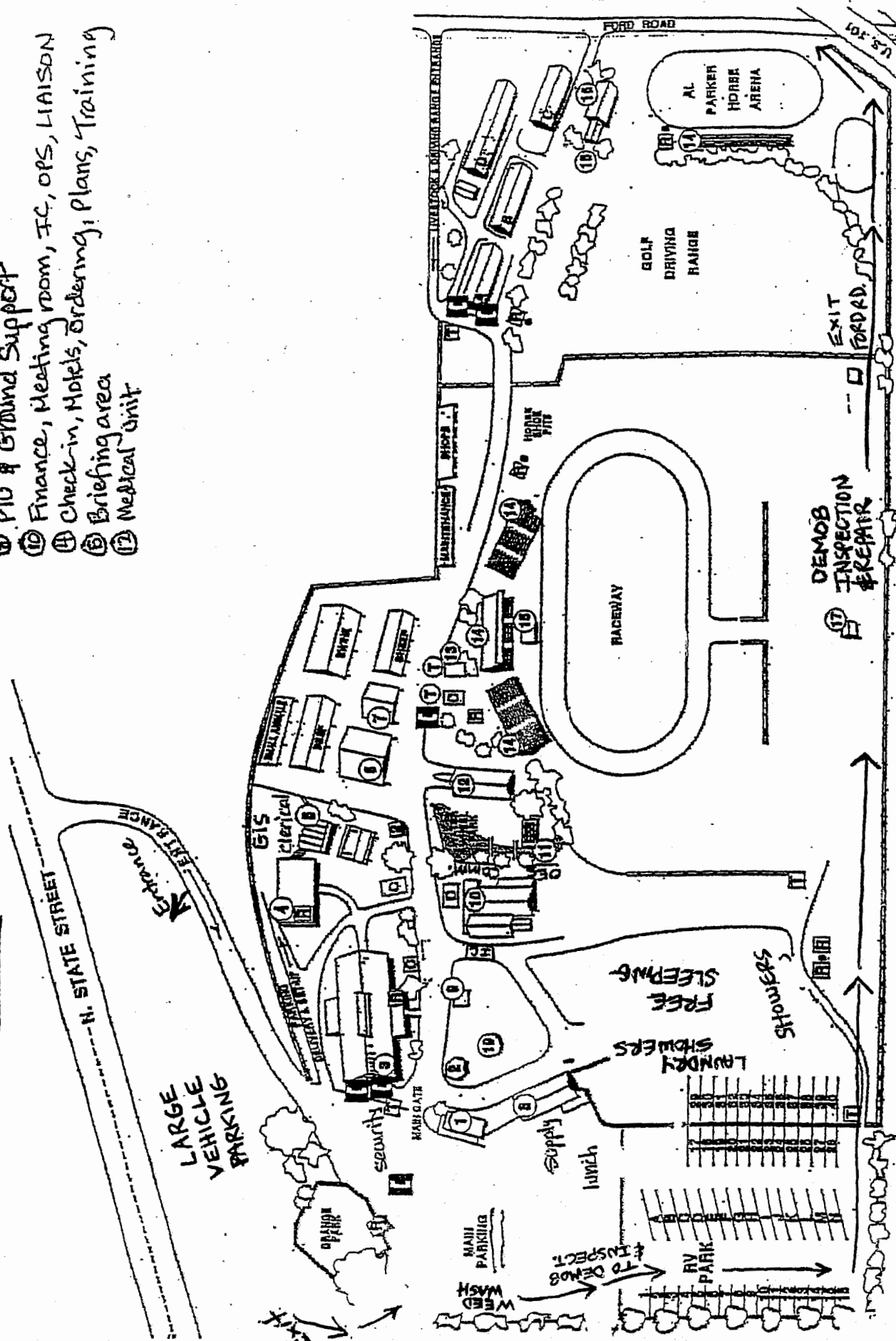


# MEV LIGHTNING BASE - UKIAH

REDWOOD EMPIRE FAIRGROUNDS

1055 N. STATE ST

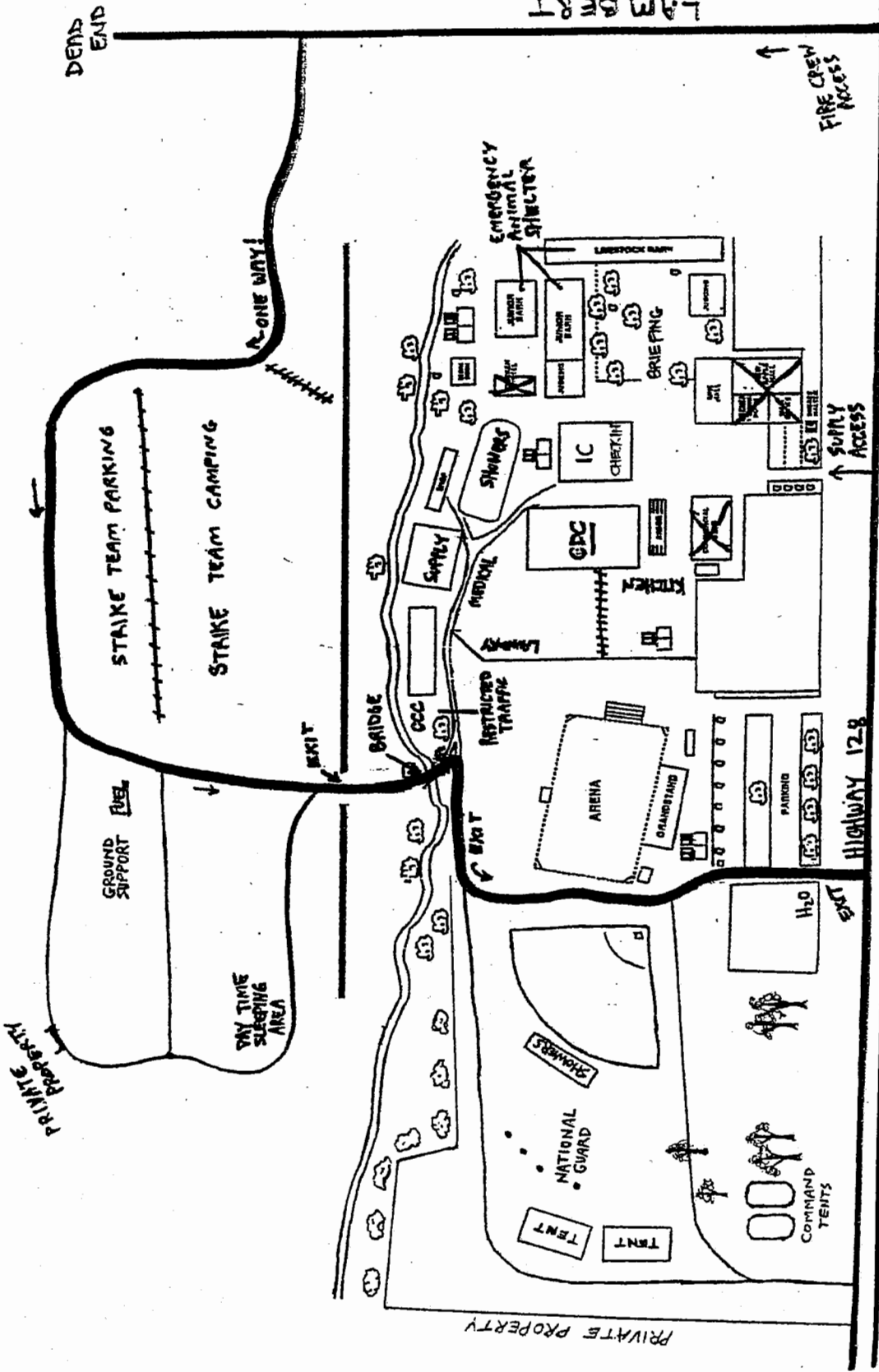
- ① Fair Admin.
- ② PIO & Ground Support
- ③ Finance, Meeting room, IC, OPS, LIAISON
- ④ Check-in, Hotels, Ordering, Plans, Training
- ⑤ Briefing area
- ⑥ Medical Unit



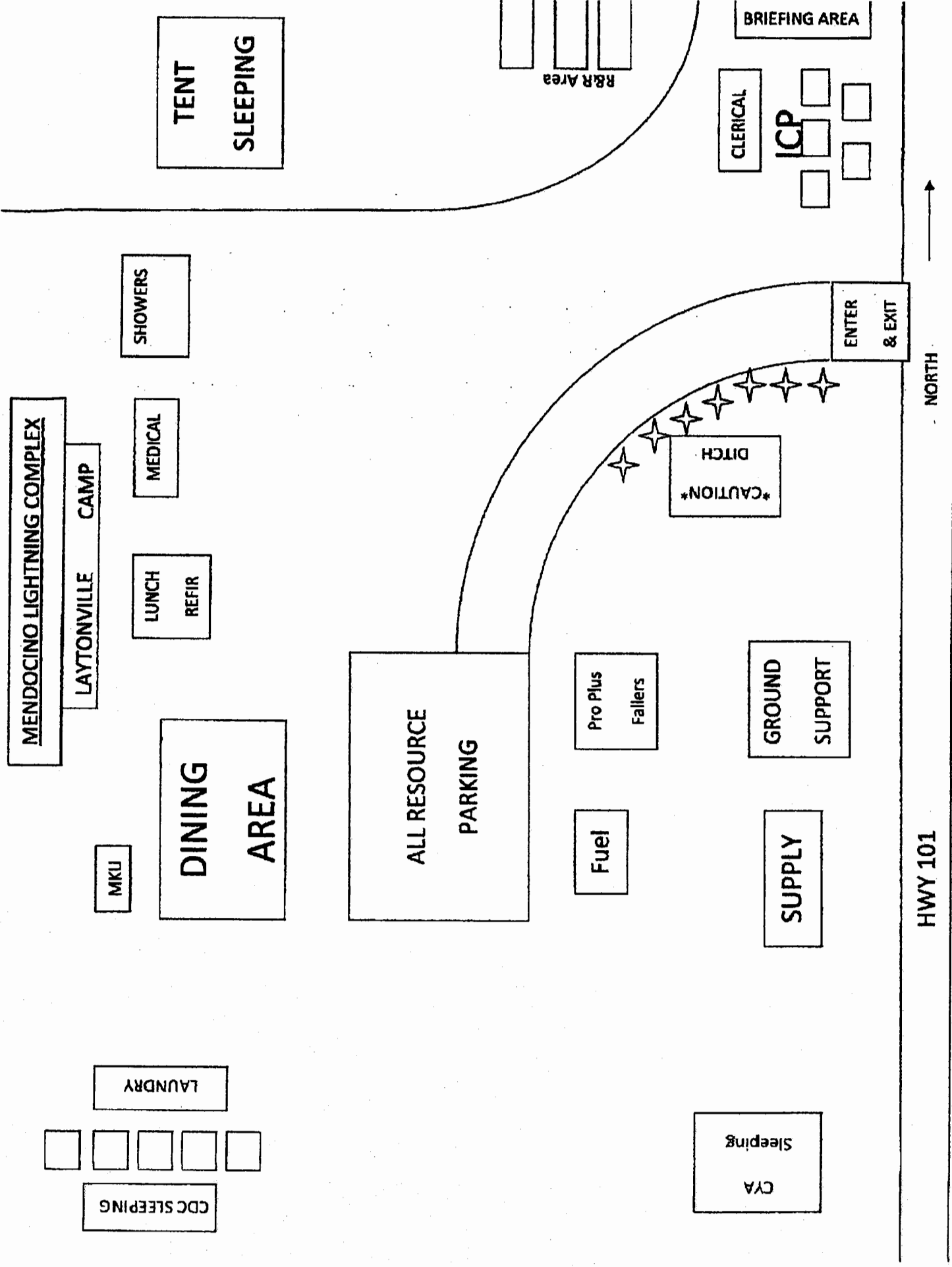


7/5/08

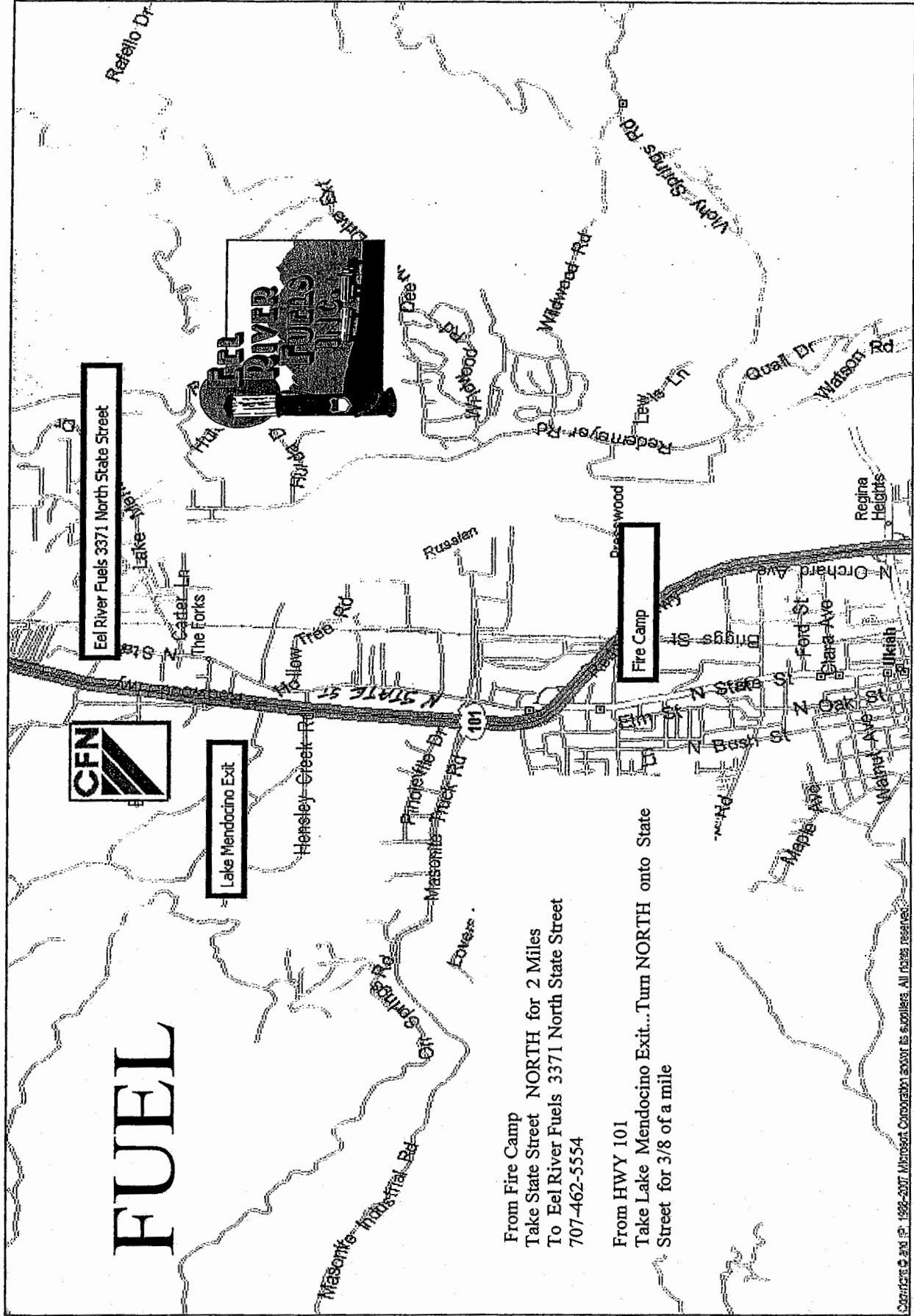
# BOONVILLE CAMP



NOT TO SCALE



CAKWOOD FOR UKIAH AREA FUEL



**CONTRACTOR/VENDOR PERFORMANCE EVALUATION  
ICS 230 (09-2001)**

1. INCIDENT NAME	2. ORDER NUMBER	3. REQUEST NUMBER	4. START DATE	END DATE
			TO	
5. SHIFT/OPERATIONAL PERIOD	6. OPERATOR		7. ASSIGNMENT OR LOCATION	

**CONTRACTOR/VENDOR INFORMATION**

8. NAME	9. ADDRESS	10. PHONE AND CONTACT
11. SERVICE <input type="checkbox"/> COMMODITY <input type="checkbox"/> RENTAL EQUIPMENT		12. AGREEMENT #
13. BRIEF DESCRIPTION OF SERVICES/COMMODITY/EQUIPMENT ORDERED:		

14. RATING FACTORS	YES	NO		
1) Gave and met acceptable ETA/commitment.	<input type="checkbox"/>	<input type="checkbox"/>		
2) Arrived prepared, equipped and ready to work.	<input type="checkbox"/>	<input type="checkbox"/>		
3) Met with assigned supervisor for direction.	<input type="checkbox"/>	<input type="checkbox"/>		
4) Met performance expectations.	<input type="checkbox"/>	<input type="checkbox"/>		
5) Equipment in safe working condition.	<input type="checkbox"/>	<input type="checkbox"/>		
6) Personnel were skilled and operated safely.	<input type="checkbox"/>	<input type="checkbox"/>		
7) Personnel's level of cooperation was acceptable.	<input type="checkbox"/>	<input type="checkbox"/>		
8) Other:	<input type="checkbox"/>	<input type="checkbox"/>		
OVERALL RATING OF PERFORMANCE	POOR* <input type="checkbox"/>	AVG. <input type="checkbox"/>	GOOD <input type="checkbox"/>	EXC. <input type="checkbox"/>
RECOMMENDATION FOR REHIRE/REUSE:	YES <input type="checkbox"/>	NO <input type="checkbox"/>	** <input type="checkbox"/>	

\* Any rating of poor **REQUIRES** explanation or comment.

\*\* Any rating of No Reuse Recommended **REQUIRES** comment and Logistics Chief concurrence.

15. COMMENTS:
---------------

SIGNATURE BELOW DOES NOT CONSTITUTE AGREEMENT WITH RATING, BUT THAT RATING WAS DISCUSSED WITH CONTRACTOR/VENDOR OR REPRESENTATIVE.

16. CONTRACTOR/VENDOR REP. NAME/TITLE		17. GOVERNMENT REP. NAME/POSITION	
18. SIGNATURE	19. DATE	20. SIGNATURE	21. DATE

NOTE: Equipment safety/compliance inspections still required, please document separately.

Distribution: Original, Incident Package, copy, Administrative Unit, Copy, Contractor/Vendor

## INSTRUCTIONS FOR COMPLETION OF ICS-230 CONTRACTOR/VENDOR PERFORMANCE EVALUATION

This form is to be completed at least once for each contractor/vendor, per incident. Specific agencies may require the form to be completed more frequently as needed to meet agency specific needs.

1. Enter the incident name.
2. Enter the incident order number.
3. Enter the request number.
4. Enter the incident start and end dates.
5. Enter the shift to be covered by the evaluation (if appropriate).
6. Enter the operator(s) name(s).
7. Enter the assignment(s) or location(s) addressed by this evaluation.
8. Enter the name of the contractor/vendor.
9. Enter address of contractor/vendor.
10. Enter phone/contact number of contractor/vendor.
11. Check the type of use made of the contractor/vendor by the incident.
12. Enter the contractor/vendor agreement number.
13. Enter a brief description of the goods/services the contractor/vendor is providing.
14. Complete by checking the YES or NO box for items 1 through 7.
15. Enter a specific expectation of the contractor/vendor not previously mentioned, in item number 8 and check YES or NO.
16. Enter any comments you feel are appropriate or relevant to the contractor/vendor(s) performance. It is MANDATORY to explain any rating of "Poor" or "No Reuse". If an entry of "Poor" or "No Reuse" is recommended, the signature of the Logistics Section Chief MUST be included along with his or her comment in this block, also.
17. Enter contractor/vendor representative name and title.
18. Enter government representative name and position.
19. Signature block for contractor/vendor representative.
20. Enter date contractor/vendor representative signed the evaluation.
21. Signature block for government representative.
22. Enter date government representative signed the evaluation.



TIME	MAJOR EVENTS
214 ICS 5-90	9. PREPARED BY (NAME AND POSITION)