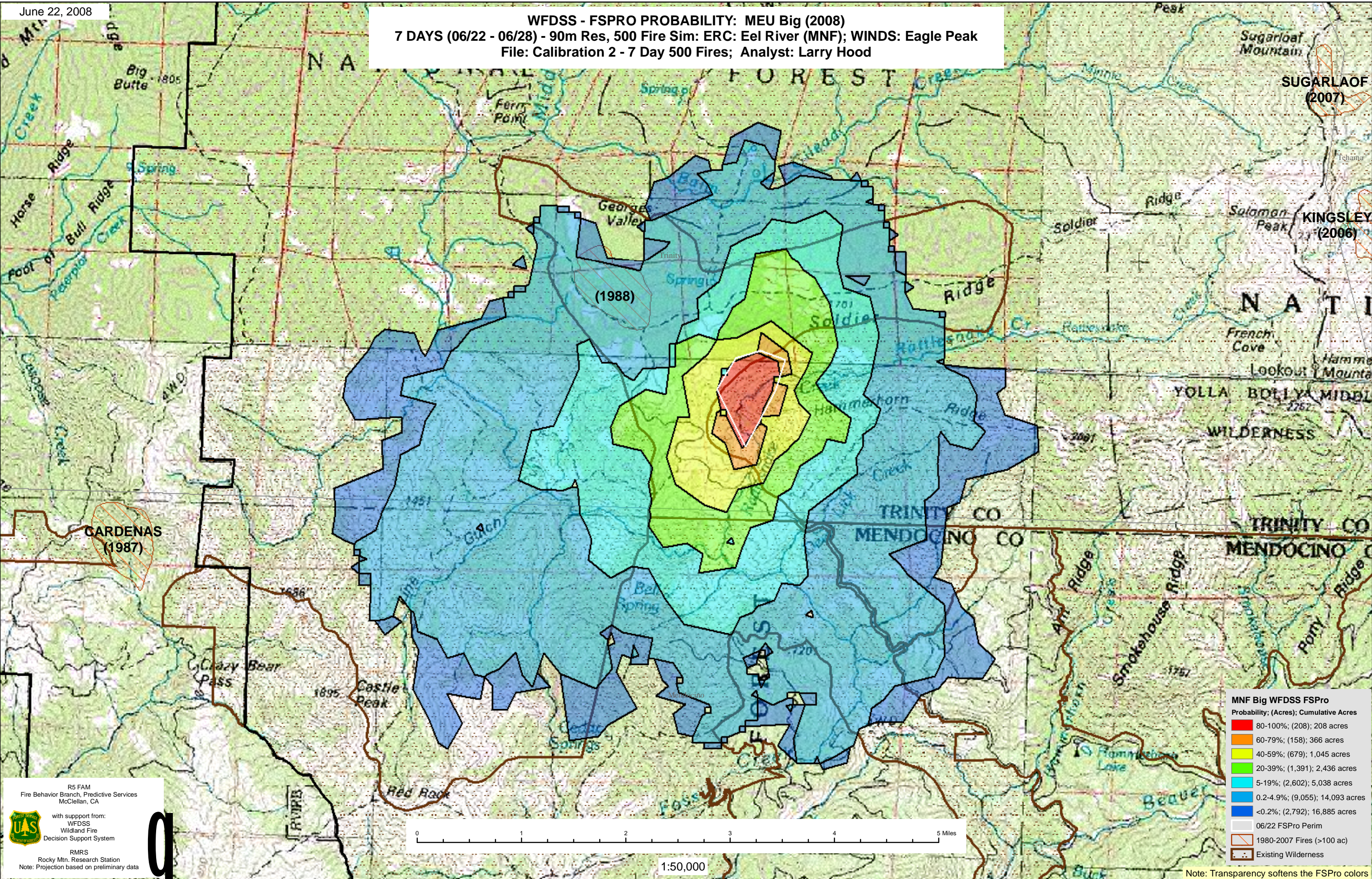


WFDSS - FSPRO PROBABILITY: MEU Big (2008)
7 DAYS (06/22 - 06/28) - 90m Res, 500 Fire Sim: ERC: Eel River (MNF); WINDS: Eagle Peak
File: Calibration 2 - 7 Day 500 Fires; Analyst: Larry Hood



MNF Big WFDSS FSPRO

Probability; (Acres); Cumulative Acres

80-100%	(208)	208 acres
60-79%	(158)	366 acres
40-59%	(679)	1,045 acres
20-39%	(1,391)	2,436 acres
5-19%	(2,602)	5,038 acres
0.2-4.9%	(9,055)	14,093 acres
<0.2%	(2,792)	16,885 acres

06/22 FSPRO Perim
 1980-2007 Fires (>100 ac)
 Existing Wilderness

R5 FAM
 Fire Behavior Branch, Predictive Services
 McClellan, CA

with support from:
 WFDSS
 Wildland Fire
 Decision Support System

RMRS
 Rocky Mtn. Research Station
 Note: Projection based on preliminary data

Note: Transparency softens the FSPRO colors