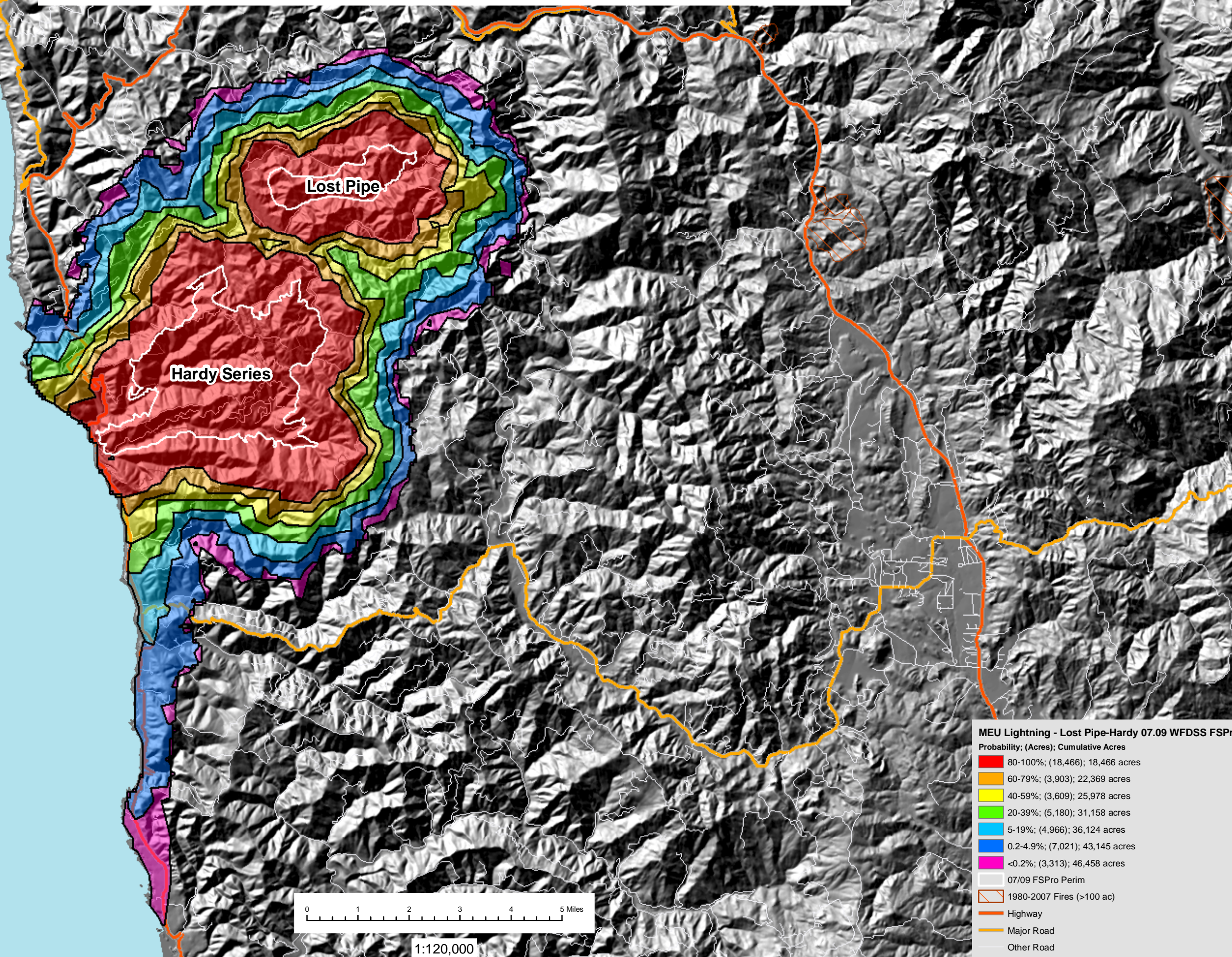


WFDSS - FSPRO PROBABILITY: MEU Lightning Complex - Lost Pipe and Hardy Series Fires (2008)  
7 DAYS (07/09 - 07/15) - 90m Res, 1000 Fire Sim: ERC: Eel River (MNF); WINDS: Alder Point  
File: 7.9.2008 Update LostPipe, Hardy 7 Day 1000 Fires; Analyst: Larry Hood

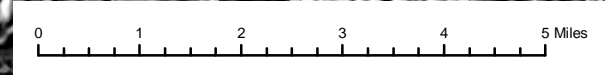


**MEU Lightning - Lost Pipe-Hardy 07.09 WFDSS FSPRO**

Probability; (Acres); Cumulative Acres

|          |          |              |
|----------|----------|--------------|
| 80-100%  | (18,466) | 18,466 acres |
| 60-79%   | (3,903)  | 22,369 acres |
| 40-59%   | (3,609)  | 25,978 acres |
| 20-39%   | (5,180)  | 31,158 acres |
| 5-19%    | (4,966)  | 36,124 acres |
| 0.2-4.9% | (7,021)  | 43,145 acres |
| <0.2%    | (3,313)  | 46,458 acres |

- 07/09 FSPRO Perim
- 1980-2007 Fires (>100 ac)
- Highway
- Major Road
- Other Road



1:120,000

R5 FAM  
Fire Behavior Branch, Predictive Services  
McClellan, CA

with support from:  
WFDSS  
Wildland Fire  
Decision Support System

RMRS  
Rocky Mtn. Research Station  
Note: Projection based on preliminary data

